

BMJ Open Acute kidney injury in the UK: a replication cohort study of the variation across three regional populations

Simon Sawhney,^{1,2} Heather A Robinson,^{2,3} Sabine N van der Veer,^{2,3} Hilda O Hounkpatin,^{2,4} Timothy M Scale,^{2,5} James A Chess,^{2,5} Niels Peek,^{2,3} Angharad Marks,^{1,2} Gareth Ivor Davies,^{2,5} Paolo Fraccaro,^{2,3} Matthew J Johnson,^{2,4} Ronan A Lyons,^{2,5} Dorothea Nitsch,^{2,6} Paul J Roderick,^{2,7} Nynke Halbesma,^{2,8} Eve Miller-Hodges,^{2,9} Corrinna Black,^{1,2} Simon Fraser^{2,7}

To cite: Sawhney S, Robinson HA, van der Veer SN, *et al.* Acute kidney injury in the UK: a replication cohort study of the variation across three regional populations. *BMJ Open* 2018;**8**:e019435. doi:10.1136/bmjopen-2017-019435

► Prepublication history and additional material for this paper are available online. To view these files, please visit the journal online (<http://dx.doi.org/10.1136/bmjopen-2017-019435>).

Received 1 September 2017
Revised 28 February 2018
Accepted 16 May 2018

ABSTRACT

Objectives A rapid growth in the reported rates of acute kidney injury (AKI) has led to calls for greater attention and greater resources for improving care. However, the reported incidence of AKI also varies more than tenfold between previous studies. Some of this variation is likely to stem from methodological heterogeneity. This study explores the extent of cross-population variation in AKI incidence after minimising heterogeneity.

Design Population-based cohort study analysing data from electronic health records from three regions in the UK through shared analysis code and harmonised methodology.

Setting Three populations from Scotland, Wales and England covering three time periods: Grampian 2003, 2007 and 2012; Swansea 2007; and Salford 2012.

Participants All residents in each region, aged 15 years or older.

Main outcome measures Population incidence of AKI and AKI phenotype (severity, recovery, recurrence). Determined using shared biochemistry-based AKI episode code and standardised by age and sex.

Results Respectively, crude AKI rates (per 10 000/year) were 131, 138, 139, 151 and 124 ($p=0.095$), and after standardisation for age and sex: 147, 151, 146, 146 and 142 ($p=0.257$) for Grampian 2003, 2007 and 2012; Swansea 2007; and Salford 2012. The pattern of variation in crude rates was robust to any modifications of the AKI definition. Across all populations and time periods, AKI rates increased substantially with age from ~20 to ~550 per 10 000/year among those aged <40 and ≥70 years.

Conclusion When harmonised methods are used and age and sex differences are accounted for, a similar high burden of AKI is consistently observed across different populations and time periods (~150 per 10 000/year). There are particularly high rates of AKI among older people. Policy-makers should be careful not draw simplistic assumptions about variation in AKI rates based on comparisons that are not rigorous in methodological terms.

INTRODUCTION

The reported outcomes following acute kidney injury (AKI) are consistently poor.¹

Strengths and limitations of this study

- Previous studies have reported substantial variation in the incidence of acute kidney injury (AKI) between regions and over time, but have involved heterogeneous methods that limit comparability. To our best knowledge, this is the first cross-population study of AKI incidence within one study, with minimised methodological heterogeneity by sharing analysis code across regions.
- By using consistent methods, and real-life, routinely collected healthcare data, we provide new evidence that the rates of AKI in the UK are similar across different regions and time periods: ~150 events per 10 000/year (1.5% of the population).
- These findings may not be generalisable outside of the regions of the UK in the study. However, to enable researchers to replicate this work, we have made publicly available our analysis code for identifying and characterising AKI episodes.

Reports of a growth in rates of AKI have led to calls for greater attention and resources for improving care,² but there is a more than tenfold variation between studies in the reported population incidence of AKI.^{3–7} Population-based estimates of AKI incidence range from 18 per 10 000/year³ to 250 per 10 000/year⁵ based on changes in serum creatinine over time, and from 3 to 40 per 10 000/year based on hospital episode codes for ‘non-dialysis requiring AKI’.^{8,9} This wide variation is difficult to fully explain,¹⁰ but is likely to be due in part to a changing clinical landscape with evolving international AKI criteria,^{11–14} and different pragmatic interpretations of AKI criteria in research.^{5,15} These reasons for variation are all potential sources of bias in clinical studies of AKI (figure 1). Without a clearer understanding of why populations differ, it is challenging (and potentially misleading) to interpret clinical



For numbered affiliations see end of article.

Correspondence to

Dr Simon Sawhney;
simon.sawhney@abd.n.ac.uk

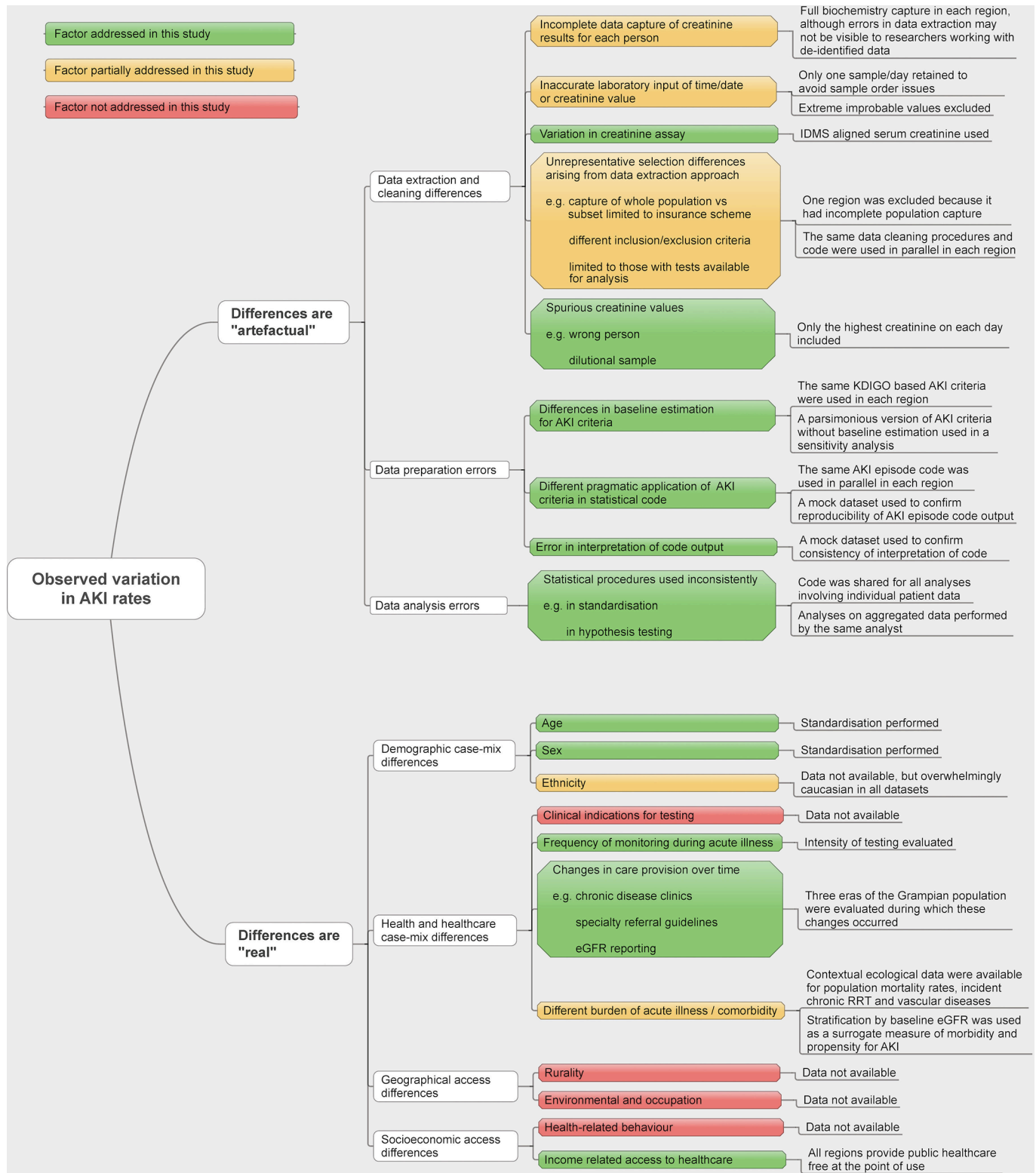


Figure 1 Conceptual framework for the reasons for cross-population differences in acute kidney injury (AKI) rates. eGFR, estimated glomerular filtration rate; IDMS, isotope dilution mass spectrometry; KDIGO, Kidney Disease: Improving Global Outcomes; RRT, renal replacement therapy.

research in context, to make comparisons across populations or over time, or to make informed public health recommendations.

Worldwide, health services are undertaking quality initiatives to increase clinical awareness and improve

treatment of AKI¹⁶⁻¹⁹ in order to achieve the International Society of Nephrology target of eliminating avoidable deaths from AKI by 2025.²⁰ To evaluate the effectiveness of these initiatives, it is vital that there is a harmonisation of approaches to clinical research. This

means minimising methodological heterogeneity so that the findings of future research are more comparable, and maximising transparency so that trends in disease incidence and outcomes can be understood. Methodological heterogeneity can arise when researchers extract data from different data infrastructures, make different assumptions and adopt different criteria for identifying events. These steps are particularly important in AKI because of the recognised challenges of AKI research: it occurs unpredictably, in different clinical locations,²¹ may be transient²² and relies on trends rather than absolute values.^{12–14} Small differences in how these challenges are handled can alter both the reported incidence and prognosis of AKI.^{5 15 21 23} Despite its importance, this information is often undocumented or described in insufficient detail for research to be reproduced.²⁴ We have described these reasons for variation in AKI rates in a conceptual model (figure 1).

Algorithms using blood test data from electronic health records (EHRs) offer the potential of an objective common language for observing common diseases in clinical practice, audit and research.²⁵ In previous work, we developed an extended version of a widely used National Health Service (NHS) algorithm for detecting AKI in blood tests,²⁶ which flags individual 'AKI' blood tests and also applies phenotyping methods to combine AKI-flagged blood tests into clinically meaningful AKI illness episodes grouped by severity, duration, recovery and recurrence.^{27 28} Sharing this algorithm between researchers working with different populations provides an opportunity to develop a harmonised approach to clinical research, robustly comparing the burden of AKI across different populations and over time, even when patient-level data cannot be shared. We used this to study the variation in the incidence of AKI across three populations from England, Scotland and Wales. The analysis spans a decade of change in the clinical awareness of AKI,¹⁶ change in international AKI criteria^{12–14} and change in the emphasis on community surveillance of people with chronic diseases.^{29–31} Our aim was to explore the extent of cross-population variation in AKI incidence using real-life data, while minimising heterogeneity through harmonised methods.

MATERIALS AND METHODS

Population profiles

This study compares datasets created using linked EHR data from primary and secondary care for three UK regions with different 'index' years from 2003 to 2014: Grampian 2003, 2007 and 2012; Abertawe Bro Morgannwg University Health Board (ABMU, referred to in this article as Swansea) 2007; and Salford 2012 (online supplementary figure 1). Each dataset involves health data from the UK NHS and includes complete primary and secondary care biochemistry capture for the region. A fourth region initially considered for this analysis (from South England) was excluded because initial inspection of the

data characteristics revealed that the population capture of the data source was incomplete and might have led to bias in the estimation of AKI. All regions provide public healthcare, free at the point of use.

NHS Grampian, a health authority in Scotland, is served primarily by one large tertiary hospital and another district general hospital. All biochemistry for the dataset was extracted from a single biochemistry department covering the entire regional population.⁵ The Grampian dataset was linked with the Scottish Renal Registry to exclude those already receiving chronic renal replacement therapy (RRT), to avoid misclassification of RRT as AKI. Similarly, Salford (North England) represents one borough of Greater Manchester, served by a single NHS hospital and biochemistry laboratory.³² Read codes (version 2) were used to extract biochemistry information and exclude records from people receiving chronic RRT. In contrast, ABMU (Swansea, Wales) in 2007 covered a region served by four district general hospitals and four laboratories using two information management systems.^{33 34} Those receiving chronic RRT could not be directly determined from a register but could be excluded based on the hospital location marked on the blood tests.

To provide further contextual description of these populations, we collected information on population mortality and relevant morbidities (renal and vascular) from the Office of National Statistics, UK Renal Registry, and Quality Outcomes Framework (QOF) data entered by general practitioner (GP) practices (table 1). Importantly, QOF data represent incentivised recording by GPs of people with a given condition (eg, chronic kidney disease), rather than actual population prevalences. This means that small differences in prevalence on the disease registers may represent recording practice as well as actual disease prevalence and should be interpreted with caution.

Conceptual framework

In figure 1, we provide a conceptual framework for understanding the sources of variation in AKI revealed by our analysis. We sought to minimise 'artefactual' methodological differences in AKI episode rates by using only datasets where complete data capture (from both hospital and community settings) was possible, by harmonising data preparation and cleaning, and by standardising code sets for identifying AKI episodes. We also accounted for 'real' potential sources of variation in AKI rates by performing age and sex standardisation, stratification by baseline eGFR for case-mix differences and comparing the number of people with blood tests in rapid succession as a surrogate for presence of an acute illness.

Data extraction and processing

This study used a distributed analysis approach to protect the confidentiality of patient-level data. Data were analysed by on-site researchers working from the same code. Non-disclosive summary statistics were aggregated into a single dataset, which was analysed

Table 1 Contextual information on the populations in this study

	Grampian 2003	Grampian 2007	Grampian 2012	Swansea 2007	Salford 2012
Midyear regional population (all ages) during index year*	529 360	548 290	573 400	499 400	237 085
Midyear regional adult population (age ≥15 years) during index year*	438 332	458 900	482 444	415 500	193 882
Percentage of population in urban settlements of >10 000 people†	49.3%	51.8%	52.1%	81.7%	99.9%
Regional crude all-cause mortality rate ages 15+ (index year/100 000)*	1192	1154	1093	1334	1135
Crude adult incidence of chronic RRT per million population (UKRR)‡	98	102	93	167	85
Prevalence of chronic kidney disease per 100 people (QOF)§	NA¶	2.6	3.3	1.8	3.0
Prevalence of coronary heart disease per 100 people (QOF)§	4.1	4.0	3.9	4.1	3.9
Prevalence of diabetes registration per 100 people (QOF)§	3.0	3.3	4.2	4.3	4.5
Prevalence of heart failure registration per 100 people (QOF)§	NA§	0.8	0.8	1.0	0.9
Prevalence of hypertension registration per 100 people (QOF)§	11.0	11.7	13.2	12.5	13.8
Prevalence of stroke and TIA registration per 100 people (QOF)§	1.6	1.7	1.9	2.1	1.8
No of biochemistry departments for whole region	One department covers in and outpatient, community and private tests	One department covers in and outpatient, community and private tests	One department covers in and outpatient, community and private tests	Four departments cover in and outpatients, community and private tests	One department covers in and outpatient and community tests. Privately obtained samples unavailable
Means of excluding samples belonging to people on long term RRT from dataset	Link to Scottish Renal Registry	Link to Scottish Renal Registry	Link to Scottish Renal Registry	Removing samples from locations where renal replacement is performed, including intensive care unit	Read code screening
IDMS aligned creatinine assay	Yes	Yes	Yes	From 2007	Yes

*From the Office of National Statistics.

†From the 2011 national census in England and Wales and Scottish government urban rural classification.

‡From the UK renal registry (UKRR) annual reports.

§Quality outcomes framework (QOF) data are incentivised information entered by general practitioner practices. Not recorded in Grampian in 2003, for which 2004 data are provided where available.

¶Data not available.

IDMS, isotope dilution mass spectrometry; NA, not applicable; RRT, renal replacement therapy; TIA, Transient ischaemic attack; UKRR, UK Renal Registry.

centrally. This ensured that patient-level data were never brought together in a single physical location. All serum creatinine results for each individual were extracted. Creatinine values that were missing, were a non-value (eg, 'sample inadequate', 'sample error') or were lower than the limit for detection of the analyser were excluded. The 'Modification of Diet in Renal

Disease' study estimated glomerular filtration rate (eGFR) was calculated using the abbreviated four-variable equation.³⁵ Finally, to avoid a non-chronological evaluation of samples from different locations, where multiple samples were available for the same individual on a given day, the sample with the highest creatinine value was retained for analysis.

AKI identification and phenotyping

A challenge of AKI clinical research is the operationalisation of precise international AKI criteria in 'real-life' data where people do not receive blood tests in a protocolised fashion. Blood tests may not have been done at the necessary times to directly observe an acute rise in creatinine from a previous baseline, and assumptions based on available data are required. We identified differences in assumptions for determining AKI as an important potential methodological reason for observed variation in AKI rates (figure 1) and therefore used the exact same definition and analysis code in each region. Kidney Disease: Improving Global Outcomes (KDIGO)-based AKI detection and phenotyping algorithm code was applied by separate analysts working locally on each dataset.¹⁴ As summarised in online supplementary table 1, these criteria compare each blood test with previous 'baseline' results within the last 365 days ('the look-back period') to determine if a recent change has occurred.²⁷ Where AKI occurred, a 'look-forward period' of 90 days was used to follow and phenotype the whole AKI episode. In online supplementary figure 2, these look-back and look-forward time periods are illustrated for a single hypothetical patient with respect to a moment of developing AKI within the index year. For those without AKI, the first eGFR of the index year was used as the baseline eGFR. For convenience, we used a baseline eGFR <60 mL/min/1.72 m² as an indicator of chronic kidney disease. Shared Stata code provided the following outputs: number of blood tests consistent with AKI, number of AKI episodes, baseline eGFR, AKI episode severity stage, progression of AKI severity from a lower to higher stage, recovery to baseline within 90 days and presence of prior AKI episodes in the past 3 years (ie, making the episode a recurrent AKI episode).

We also analysed data using more parsimonious versions of the KDIGO criteria: a 'narrow interpretation' in which blood tests were only compared if they were no more than a week apart (ie, restricted to criteria 2 and 3), and a 'very narrow interpretation' comparing only tests no more than 2 days apart (ie, restricted to criterion 3). If variation was due to a lack of robustness of AKI criteria in the face of estimating baseline from less recent data, these narrower interpretations would be expected to lead to less variation in AKI incidence.

To ensure uniformity of the application and interpretation of AKI code, a mock dataset of 40 hypothetical patients was developed. This mock dataset deliberately contained unformatted variables and a variety of creatinine trend patterns to represent a full range of data cleaning steps, AKI phenotypes, blood test intervals and interpretation issues. Each analyst used the same code on the test dataset and reproduced the same results before progressing to analysing regional data. We have made the algorithm code, mock dataset and instructions for their optimal use in Stata freely available online (<https://github.com/RenalHDRUK>).

Statistical analysis

Analyses included the description of baseline characteristics, comparison of both crude and age-sex standardised rates of AKI, and phenotypes of AKI episodes. We also compared AKI rates in subgroups of baseline eGFR (as described above) and individual components of AKI criteria to determine if variations in rate were robust to changes in the AKI definition (table 2). AKI can only be identified when sufficient blood tests have been performed to detect a change. Therefore, to evaluate reasons for residual variation, we described the patterns of blood testing in each region, including the frequency of blood tests, the regularity (eg, blood tests no more than 2 and 7 days apart) and blood test location (hospital and outpatient/community).

Baseline characteristics included age, sex, the number of people with evidence of renal impairment (eGFR <60 mL/min/1.73 m²) on their first test in the index year and the number of people with blood tests sufficiently close together for it to be possible to detect an 'AKI' result if present (two tests no more than 365 days apart).

We compared population rates of AKI episodes across each region and index year. We compared AKI episode rates using national statistics midyear population estimates for each region and then standardised to the England population for 2012,³⁶ a reference population selected as two of the three regions provided 2012 data. All AKI episodes in the index year counted towards the overall AKI episode rate. One-way analysis of variance followed by Tukey's post hoc test (in the event of significant differences) was used to identify pairwise significant differences in population level AKI episode rates.

For people with sufficient blood tests to potentially detect an episode of AKI (at least two tests no more than 365 days apart), we compared rates within eGFR strata (<30, 30–44, 45–59 and ≥60 mL/min/1.73 m²). The proportion of the population with at least one AKI result based on AKI criteria 1, 2 or 3 (table 2), and the proportion of the population with at least one AKI result based on narrower interpretations of KDIGO criteria (restricting to criteria 2 and 3, or criterion 3 alone) were also recorded. To evaluate the impact of incomplete biochemistry capture, we also recalculated AKI rates using only tests taken from people in hospital. Of note, a distinction between hospital inpatient and outpatient results was not possible in Salford.

To evaluate potential sources of residual variation in AKI rates after harmonised analysis, we compared patterns of blood testing (number, frequency and location).

Patient involvement

No patients were involved in development of the research question or the design of the study. There are no plans to disseminate the results of the research to study participants.

Table 2 Baseline characteristics for each dataset

	Grampian 2003	Grampian 2007	Grampian 2012	Swansea 2007	Salford 2012
	Patient total (%)	Patient total (%)	Patient total (%)	Patient total (%)	Patient total (%)
Adult resident population (aged ≥15)	438 332	458 900	482 444	415 500	193 882
Population ascertainment of renal impairment (eGFR <60 mL/min/1.73 m²) in index year					
No tests during index year	311 922 (71.2)*	303 673 (66.2)	301 992 (62.6)	253 531 (61.0)	116 977 (60.3)
eGFR ≥60†	101 595 (23.2)	120 854 (26.3)	158 736 (32.9)	129 959 (31.3)	66 890 (34.5)
eGFR <60†	24 805 (5.7)	34 373 (11.3)	21 716 (4.5)	32 010 (7.7)	10 015 (5.2)
Sufficiency of tests to enable AKI detection					
People with no tests during index year	311 922 (71.2)	303 673 (66.2)	301 992 (62.6)	253 531 (61.0)	116 977 (60.3)
People with insufficient tests	52 602 (12.0)	57 788 (12.6)	69 239 (14.4)	59 839 (14.4)	31 467 (16.2)
People with ≥2 tests within 365 days	73 808 (16.8)	97 439 (21.2)	111 213 (23.1)	102 130 (24.6)	45 438 (23.4)
Characteristics of people with ≥2 tests within 365 days					
Proportion women	40 413 (54.8)	53 061 (54.5)	60 330 (54.2)	55 685 (54.5)	24 723 (54.4)
Median age (IQR)	63 (48–74)	63 (50–75)	63 (49–74)	64 (51–75)	63 (49–74)
eGFR <60†	18 573 (25.2)‡	28 274 (29.0)	18 679 (20.2)	25 952 (25.4)	8541 (18.8)

*Expressed as a percentage of total residents unless specified otherwise.

†First eGFR in index year (mL/min/1.73 m²).

‡Expressed as a percentage of people with ≥2 tests within 365 days.

AKI, acute kidney injury; eGFR, estimated glomerular filtration rate.

RESULTS

Populations and baseline characteristics

As described in [table 1](#), populations ranged in size from 193 882 (Salford 2012) to 482 444 people (Grampian 2012) ([table 3](#)). Crude reported population mortality rates were higher in Swansea than Grampian and Salford, as was the incidence of people starting long-term RRT. The recognition of diabetes and cardiovascular diseases in incentivised GP registers was similar across the populations.

[Table 2](#) shows the baseline characteristics of extracted datasets after harmonised data cleaning. The percentage of people with at least two tests no more than 365 days apart varied from 17% to 25% with the fewest in the earliest dataset (Grampian 2003). There was a greater proportion of people tested with renal impairment (eGFR <60 mL/min/1.73 m²) in 2007 compared with the other years of study.

Incidence of AKI episodes

[Table 3](#) and [figure 2](#) show the differences in crude and standardised rates of AKI episodes for each dataset. A minority of people had more than one AKI episode in the index year. For reporting AKI episode rates ([table 3](#)), all episodes are included, whereas for reporting phenotypes of people with an AKI episode, the first episode is described (bottom of [table 3](#) and [table 4](#)). Crude AKI rates varied with the lowest in Salford 2012 and highest

rate in Swansea 2007 (124–151 per 10 000/year, p=0.095). Standardisation by age and sex accounted for residual differences (142–151 per 10 000/year, p=0.257), with 95% CIs overlapping in all instances. Age and sex standardised AKI rates varied little between Grampian 2003, 2007 and 2012 (146–151 per 10 000/year). [Table 3](#) also shows that the majority of people developing AKI could be identified using hospital tests alone, and just over half could be identified in each region using a rigid interpretation of KDIGO AKI criteria. Finally, across all populations, the proportion of people developing AKI in the index year increased substantially with increasing age and lower eGFR.

As shown in [figure 3](#), the pattern of variation in crude AKI rates was the same when narrower interpretations of KDIGO AKI criteria were used, comparing only blood tests in the prior 2 and 7 days. [Table 4](#) shows this pattern was also similar when analysis was limited to each individual component of the AKI criteria, or within strata of baseline eGFR.

AKI phenotypes

[Table 4](#) describes the first AKI episode for people with an AKI episode during the index year. As well as having the highest crude AKI rate, a greater proportion of those with AKI in Swansea were older, had baseline eGFR <60 mL/min/1.73 m² (37.6%), had a severe AKI episode (15.4% stage 3) and had non-recovery at 90 days (45.1%). In

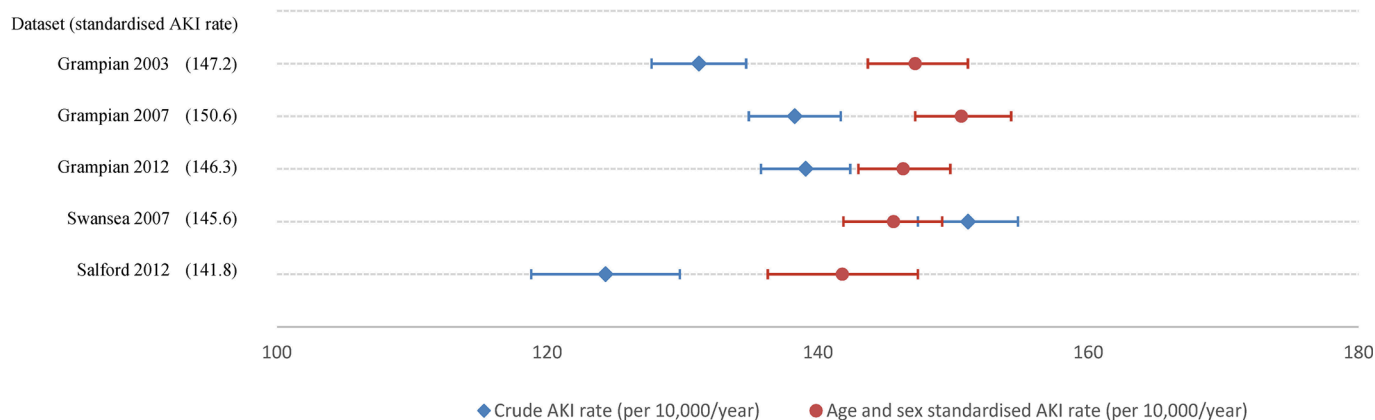


Figure 2 Crude and age–sex standardised rate of acute kidney injury (AKI) episodes.

Grampian between 2003 and 2012, there was a steady improvement in the proportion of people with renal recovery 90 days after AKI from 42% to 49%.

Further sources of variation

In addition to assessing for age, sex and case-mix differences, we evaluated the blood testing patterns and

Table 4 Phenotype of acute kidney injury (AKI) episodes

	Grampian 2003	Grampian 2007	Grampian 2012	Swansea 2007	Salford 2012
	Total people (%)	Total people (%)	Total people (%)	Total people (%)	Total people (%)
People with AKI*	5362	5930	6277	5847	2208
Proportion women	2899 (54.1)	3256 (54.9)	3443 (54.9)	3195 (54.6)	1250 (56.6)
Median age (IQR)	73 (61–81)	74 (61–82)	74 (60–82)	76 (64–84)	74 (61–83)
Peak AKI severity stage for first episode					
Stage 1	3720 (69.4)	4211 (71.0)	4389 (69.9)	3720 (63.6)	1435 (65.0)
Stage 2	1014 (18.9)	1063 (17.9)	1174 (18.7)	1224 (20.9)	451 (20.4)
Stage 3	628 (11.7)	656 (11.1)	714 (11.4)	903 (15.4)	322 (14.6)
AKI stage progression	817 (15.2)	792 (13.4)	850 (13.5)	900 (15.4)	300 (13.6)
Baseline eGFR for first episode (mL/min/1.73m²)					
≥60	3612 (67.4)	3874 (65.3)	4419 (70.4)	3648 (62.4)	1512 (68.5)
45–59	809 (15.1)	940 (15.9)	894 (14.2)	1044 (17.9)	323 (14.6)
30–44	597 (11.1)	723 (12.2)	661 (10.5)	732 (12.5)	202 (9.1)
<30	344 (6.4)	393 (6.6)	303 (4.8)	423 (7.2)	171 (7.7)
Prior AKI episodes detected in last 3 years					
No prior episodes	4415 (82.3)	4847 (81.7)	5052 (80.5)	4824 (82.5)	1708 (77.4)
One prior episode	723 (13.5)	833 (14.0)	897 (14.3)	784 (13.4)	349 (15.8)
Two or more prior episodes	224 (4.2)	250 (4.2)	328 (5.2)	239 (4.1)	151 (6.8)
Prior AKI within 1 year	414 (7.7)	459 (7.7)	492 (7.8)	488 (8.3)	216 (9.8)
Renal recovery to within 20% of baseline					
Renal recovery	2239 (41.8)	2588 (43.6)	3077 (49.0)	2156 (36.9)	970 (43.9)
Renal non-recovery	2203 (41.1)	2387 (40.3)	2245 (35.8)	2635 (45.1)	820 (37.1)
Repeat samples not available	920 (17.2)	955 (16.1)	955 (15.2)	1056 (18.1)	418 (18.9)

*Numbers in brackets expressed as a percentage of people with at least one AKI episode.
eGFR, estimated glomerular filtration rate.

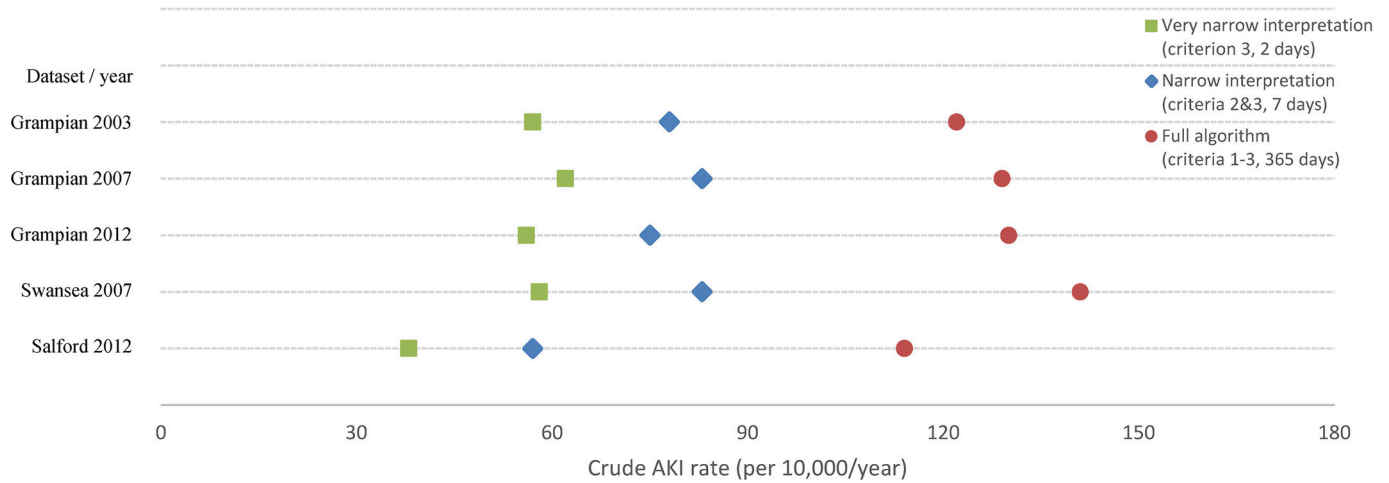


Figure 3 Crude acute kidney injury (AKI) rates using different interpretations of the Kidney Disease: Improving Global Outcomes-based AKI definition.

clinical location contexts of each dataset (figure 4). Figure 4A shows the frequency of blood tests taken grouped by location: hospital inpatient or outpatient/community. Figure 4B shows the proportion of people with blood tests in close succession. In Grampian from 2003 to 2012, community blood testing increased over

time, but the frequency of hospital inpatient testing remained unchanged. Test location was not available in Salford, but the proportions of people with two blood tests no more than 2 and 7 days apart was lower than in Grampian and Swansea. Figure 1 shows the conceptual framework for understanding these sources of variation.

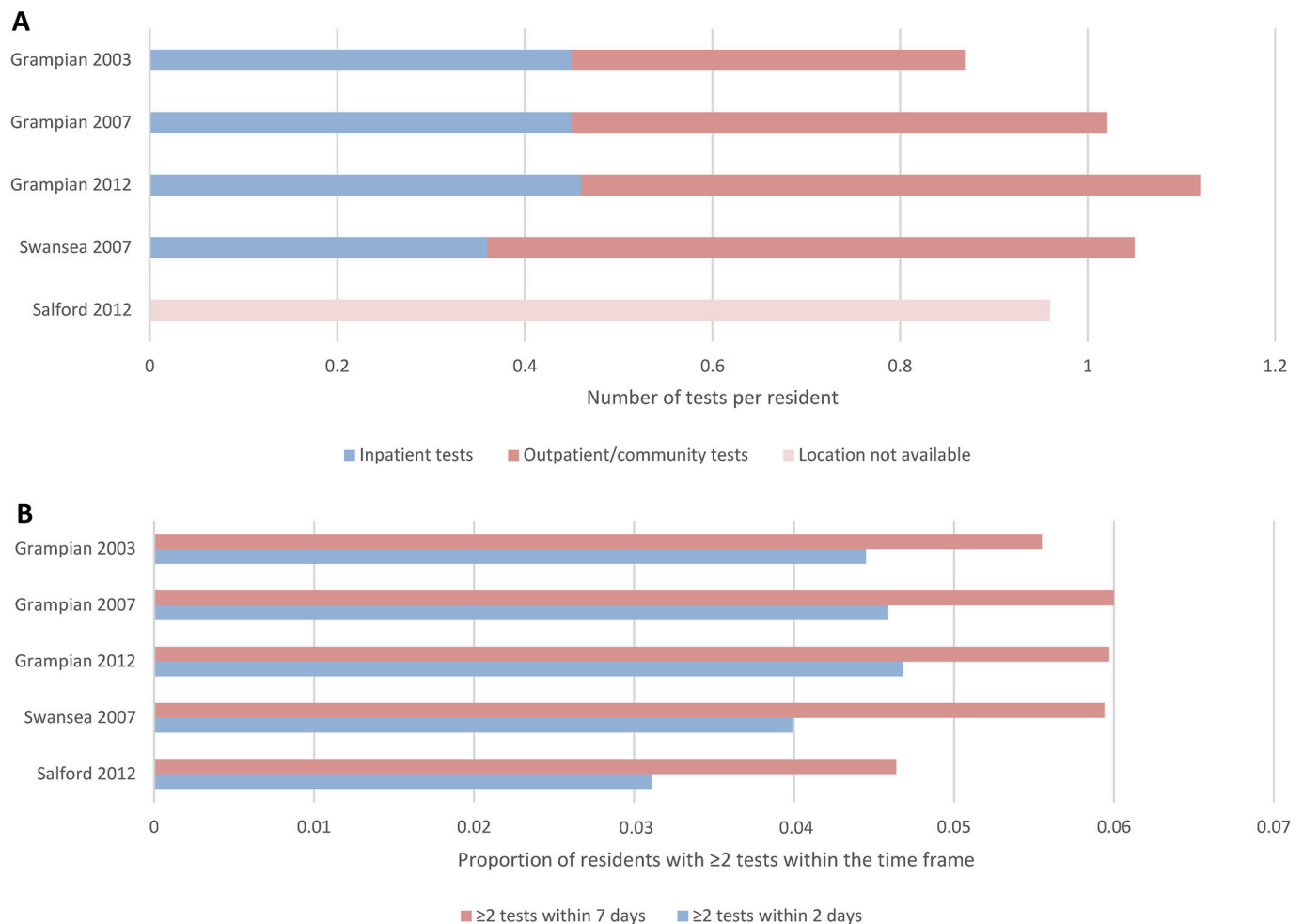


Figure 4 Patterns of blood testing by clinical location (A) and by test regularity (B).

DISCUSSION

To our knowledge, this is the first multicentre study to systematically evaluate the extent of and reasons for regional and temporal variation in population rates of AKI, using a harmonised methodological approach. There were differences in the crude rates of AKI between datasets, but after accounting for age and sex, standardised rates were strikingly similar (at 140–150 episodes per 10 000/year, or ~1.5% of the population). The consistently high proportion of people aged over 70 developing AKI was also striking (>5%) and has implications for the planning the future healthcare requirements of an ageing population. This analysis shows the importance of both harmonised methods and standardisation for case-mix prior to any between-centre comparisons for description of variation in AKI.

Our analysis provides additional insight into previous reports of a rising AKI incidence in studies based on hospital episode codes or differing AKI definitions.¹⁰ Applying the same KDIGO-based AKI definition to data from the same region, over a 10-year span (2003–2012), the standardised AKI rates in Grampian changed little. Notably, this stability was in spite of an increasing frequency of outpatient/community testing in Grampian (whereas the frequency of hospital inpatient testing changed little over the same period). In addition, our analysis showed similar (although reduced) AKI rates across the regions when only hospital blood samples were analysed, or when the AKI definition was limited on only blood tests within the past week. Our analysis also showed a pattern of AKI phenotypes that was consistent with case-mix differences between regions. Swansea, which had the highest all-cause population mortality, also had the highest proportion of AKI phenotypes for severity, AKI progression and non-recovery.

Between-population variation in the prevalence of kidney disease has previously been described for CKD in Ireland,³⁷ Germany³⁸ and Taiwan,³⁹ as have variation between European countries.⁴⁰ In our analysis, we have now shown that much of the regional variation in AKI between UK regions can be eliminated by harmonising methods, definitions and correcting for age and sex differences. The stability we report in the AKI incidence over multiple time points in a 10-year period is contrary to previous studies from the UK and North America.¹⁰ Given the precautions that we took to minimise heterogeneity, it is possible that some differences reported in previous studies represent a methodological artefact (eg, data capture or case-mix). Consistent with our findings, a recent study of hospital-based AKI among people admitted to the Mayo Clinic also found no significant change in AKI rates between 2006 and 2014 using a consistent creatinine change AKI definition across each year and stratifying by age and sex.⁴¹ Furthermore, in our analysis, the pattern of differences in crude AKI rates was robust to modifications of KDIGO criteria using shorter look-back periods.

Our study has caveats common to observational studies, which we have highlighted in a conceptual model that explains the reasons for observed variation in AKI rates (figure 1). In particular, even though we used data from three regions with the same social healthcare system (the UK National Health Service), we encountered incomplete population data capture that led to the exclusion of a fourth region from the study. As we note in figure 1, differences in population capture arising out of incomplete data extraction are not necessarily visible to researchers analysing anonymised large datasets. This serves as a critical caution for researchers and policy-makers to avoid making simplistic assumptions that data from different regions are necessarily comparable when they are derived from different sources. We note that while we have used data from GP registers to provide contextual information on the populations, these data need to be interpreted carefully as they also reflect recording practices in primary care rather than solely disease burden. We would also like to remind readers that while we have applied AKI criteria consistently with the same code in each region, where sparse data exist, there still may have been bidirectional misclassification between AKI and CKD. Similarly, where AKI has occurred in the context of critical illness, falsely low creatinine values from loss of muscle mass may imply a renal recovery that has not occurred. This is a challenge for all observational studies using routine blood test data. Nevertheless, a strength of our analysis is that we have used the same pragmatic approach to this challenge across each of the populations and time periods in the study. Finally, we note that only data from three UK regions were available for inclusion in our study. This is insufficient to describe variation for the whole of the UK and other countries. This article represents a first step towards more harmonised comparisons of AKI across populations. We have shared our code with this article (<https://github.com/RenalHDRUK>) and now invite researchers working with population datasets in other regions to add to our experience.

In conclusion, our analysis shows the need for a robust methodological approach and recognition of case-mix differences when evaluating between-centre and temporal trends in AKI. The sharing of code is key to this approach, and we have made our code from this article available for researchers to use. Using this approach, we show strikingly similar rates of AKI across different populations from England, Scotland and Wales over a 10-year period. A consistently high burden of AKI is apparent with an estimated 1.5% of the UK population experiencing AKI each year, rising to more than 5% per year in the elderly. Current quality initiatives should adopt these methods or similar methods when evaluating the impact of changes in practice on the burden of AKI.

Author affiliations

¹Institute of Applied Health Sciences, University of Aberdeen, Aberdeen, UK

²Farr Institute of Health Informatics Research, UK

³Centre for Health Informatics, Division of Informatics, Imaging and Data Sciences, Faculty of Biology, Medicine and Health, Manchester Academic Health Science Centre, The University of Manchester, Manchester, UK

⁴NIHR CLAHRC Wessex Data Science Hub, Faculty of Health Sciences, University of Southampton, Southampton, UK

⁵University of Swansea, Swansea, UK

⁶London School of Hygiene and Tropical Medicine, London, UK

⁷Academic Unit of Primary Care and Population Sciences, Faculty of Medicine, University of Southampton, Southampton, UK

⁸Usher Institute of Population Health Sciences and Informatics, University of Edinburgh, Edinburgh, UK

⁹British Heart Foundation Centre for Cardiovascular Science, University of Edinburgh, Edinburgh, UK

Acknowledgements We would like to acknowledge all the data providers who make anonymised data available for research. This study makes use of anonymised data held in the Secure Anonymised Information Linkage (SAIL) system, which is part of the national e-health records research infrastructure for Wales. We thank the Salford Integrated Record (SIR) board for providing us with the 2014 release of the SIR used in this study.

Contributors CB, SF, SS and SNvdV conceived the study. AM, GID, HAR, HOH, MJJ, SS and TMS contributed to collection of the data. AM, CB, HOH, JAC, NP, PF, PJR, SS, SNvdV, TMS and SF contributed to analysis of the data. AM, CB, DN, EM-H, GID, HOH, HAR, JAC, MJJ, NH, NP, PF, PJR, RAL, SS, SNvdV, TMS and SF contributed to interpretation of the data. SS and SF drafted the manuscript with input from AM, CB, DN, EM-H, GID, HOH, HAR, JAC, MJJ, NH, NP, PF, PJR, RAL, SNvdV and TMS. All authors approved the final version.

Funding This work was funded by a grant from the UK's Farr Institute for Health Informatics Research (UKHIRN/XFarrRP001). The Farr Institute is supported by a 10-funder consortium: Arthritis Research UK, the British Heart Foundation, Cancer Research UK, the Economic and Social Research Council, the Engineering and Physical Sciences Research Council, the Medical Research Council, the National Institute of Health Research, the National Institute for Social Care and Health Research (Welsh Assembly Government), the Chief Scientist Office (Scottish Government Health Directorates) and the Wellcome (MRC grant nos. CIPHER MR/K006525/1, HeRC MR/K006665/1, London MR/ K006584/1, Scotland MR/ K007017/1). We also acknowledge the data management support of Grampian Data Safe Haven (DaSH) and the associated financial support of NHS Research Scotland, through NHS Grampian investment in the Grampian DaSH. Work on this project was also part funded by Health Care and Research Wales, and by the National Institute for Health Research (NIHR) Collaboration for Leadership in Applied Health Research and Care Wessex at Southampton NHS Hospitals Foundation Trust. The views expressed are those of the authors and not necessarily those of the NHS, the NIHR or the Department of Health and Social Care. SS was supported by a research training fellowship from the Wellcome Trust to study the outcomes of acute kidney injury (WT102729/Z/13/Z).

Disclaimer The funders of this study had no role in study design; collection, analysis and interpretation of data; writing the report; or the decision to submit the report for publication.

Competing interests All authors have completed the ICMJE uniform disclosure form at www.icmje.org/doi_disclosure.pdf and declare: DN reports grants from Informatica for analyses of the National CKD Audit, which was tendered by HQIP (funding from NHS Wales and NHS England), outside the submitted work. SS is supported by a research training fellowship from the Wellcome Trust to study the outcomes of acute kidney injury (WT102729/Z/13/Z). No other support from any organisation for the submitted work; no other financial relationships with any organisations that might have an interest in the submitted work in the previous three years; no other relationships or activities that could appear to have influenced the submitted work.

Patient consent Not required.

Ethics approval Permission for the use of Grampian biochemistry data using routine biochemistry to identify AKI was provided by University of Aberdeen Sponsor, NHS Grampian Caldicott, respective data custodians, NHS Privacy Advisory Committee (ref PAC 33/14), NHS Research and Development Office (project no. 2014RM003) and National Research Ethics Service (reference 14/NW/1371). Permission to analyse SIR data was granted to North West eHealth via the SIR approval board in 2012, which incorporates the appropriate information governance. Further ethical approval was not required due to the anonymised nature of the data. We thank the SIR board for providing us with the 2014 release

of the SIR used in this study. Permissions for using the SAIL databank were gained through application for the SAIL 0505 project, looking at acute kidney injury in Wales. This was reviewed by the Information Governance Review Panel (IGRP), which contains members of the British Medical Association (BMA), National Research Ethics Service (NRES), public health Wales, NHS Wales Informatics Service (NWIS) and consumer panel.

Provenance and peer review Not commissioned; externally peer reviewed.

Data sharing statement No additional data available. Analysis code is freely available online (<https://github.com/RenalHDRUK>).

Open access This is an open access article distributed in accordance with the terms of the Creative Commons Attribution (CC BY 4.0) license, which permits others to distribute, remix, adapt and build upon this work, for commercial use, provided the original work is properly cited. See: <http://creativecommons.org/licenses/by/4.0/>

© Article author(s) (or their employer(s) unless otherwise stated in the text of the article) 2018. All rights reserved. No commercial use is permitted unless otherwise expressly granted.

REFERENCES

- Chertow GM, Burdick E, Honour M, *et al.* Acute kidney injury, mortality, length of stay, and costs in hospitalized patients. *J Am Soc Nephrol* 2005;16:3365–70.
- Hsu RK, Siew ED. The growth of AKI: half empty or half full, its the size of the glass that matters. *Kidney Int* 2017;92:550–3.
- Ali T, Khan I, Simpson W, *et al.* Incidence and outcomes in acute kidney injury: a comprehensive population-based study. *J Am Soc Nephrol* 2007;18:1292–8.
- Hsu CY, McCulloch CE, Fan D, *et al.* Community-based incidence of acute renal failure. *Kidney Int* 2007;72:208–12.
- Sawhney S, Fluck N, Marks A, *et al.* Acute kidney injury—how does automated detection perform? *Nephrol Dial Transplant* 2015;30:1853–61.
- Waikar SS, Curhan GC, Wald R, *et al.* Declining mortality in patients with acute renal failure, 1988 to 2002. *J Am Soc Nephrol* 2006;17:1143–50.
- Bedford M, Stevens PE, Wheeler TW, *et al.* What is the real impact of acute kidney injury? *BMC Nephrol* 2014;15:95.
- Kolhe NV, Muirhead AW, Wilkes SR, *et al.* The epidemiology of hospitalised acute kidney injury not requiring dialysis in England from 1998 to 2013: retrospective analysis of hospital episode statistics. *Int J Clin Pract* 2016;70:330–9.
- Hayward JS, McArthur E, Nash DM, *et al.* Kidney disease among registered méris citizens of Ontario: a population-based cohort study. *Can J Kidney Health Dis* 2017;4:2054358117703071.
- Siew ED, Davenport A. The growth of acute kidney injury: a rising tide or just closer attention to detail? *Kidney Int* 2015;87:46–61.
- Van Biesen W, Vanholder R, Lameire N. Defining acute renal failure: RIFLE and beyond. *Clin J Am Soc Nephrol* 2006;1:1314–9.
- Bellomo R, Ronco C, Kellum JA, *et al.* Acute renal failure—definition, outcome measures, animal models, fluid therapy and information technology needs: the second international consensus conference of the Acute Dialysis Quality Initiative (ADQI) Group. *Crit Care* 2004;8:R204–12.
- Mehta RL, Kellum JA, Shah SV, *et al.* Acute kidney injury network: report of an initiative to improve outcomes in acute kidney injury. *Crit Care* 2007;11:R31.
- Kellum JA, Lameire N, Aspelin P, *et al.* Kidney Disease: Improving Global Outcomes (KDIGO) acute kidney injury work group. KDIGO clinical practice guideline for acute kidney injury. *Kidney International Supplements* 2012;2:1–138.
- Lafrance JP, Miller DR. Defining acute kidney injury in database studies: the effects of varying the baseline kidney function assessment period and considering CKD status. *Am J Kidney Dis* 2010;56:651–60.
- Stewart J, Findlay G, Smith N, *et al.* *Adding insult to injury: a review of the care of patients who died in hospital with a primary diagnosis of acute kidney injury.* London: National Confidential Inquiry into Patient Outcome and Death, 2009.
- Silver SA, Adu D, Agarwal S, *et al.* Strategies to enhance rehabilitation after acute kidney injury in the developing world. *Kidney International Reports* 2017;2:579–93.
- Think Kidneys. Think kidneys. 2015 <https://www.thinkkidneys.nhs.uk/> (accessed 07 Apr 2017).
- Mehta R, Bagga A, Patibandla R, *et al.* Detection and management of aki in the developing world: the 18th Acute Disease Quality Initiative

- (ADQI) international consensus conference. *Kidney International Reports* 2017;2:515–8.
20. Mehta RL, Cerdá J, Burdmann EA, *et al.* International Society of Nephrology's 0by25 initiative for acute kidney injury (zero preventable deaths by 2025): a human rights case for nephrology. *Lancet* 2015;385:2616–43.
 21. Sawhney S, Fluck N, Fraser SD, *et al.* KDIGO-based acute kidney injury criteria operate differently in hospitals and the community—findings from a large population cohort. *Nephrol Dial Transplant* 2016;31:922–9.
 22. Uchino S, Bellomo R, Bagshaw SM, *et al.* Transient azotaemia is associated with a high risk of death in hospitalized patients. *Nephrol Dial Transplant* 2010;25:1833–9.
 23. Sawhney S, Mitchell M, Marks A, *et al.* Long-term prognosis after acute kidney injury (AKI): what is the role of baseline kidney function and recovery? A systematic review. *BMJ Open* 2015;5:e006497.
 24. Playford CJ, Gayle V, Connelly R, *et al.* Administrative social science data: the challenge of reproducible research. *Big Data Soc* 2016;3:205395171668414.
 25. Bagshaw SM, Goldstein SL, Ronco C, *et al.* Acute kidney injury in the era of big data: the 15th consensus conference of the Acute Dialysis Quality Initiative (ADQI). *Canadian Journal of Kidney Health and Disease* 2016;3:103–5.
 26. NHS England. Patient safety alert on standardising the early identification of acute kidney injury. 2014 <http://www.england.nhs.uk/2014/06/09/psa-aki/> (accessed 07 Apr 2017).
 27. Sawhney S, Marks A, Fluck N, *et al.* Intermediate and long-term outcomes of survivors of acute kidney injury episodes: a large population-based cohort study. *Am J Kidney Dis* 2017;69:18–28.
 28. Sawhney S, Marks A, Fluck N, *et al.* Post-discharge kidney function is associated with subsequent ten-year renal progression risk among survivors of acute kidney injury. *Kidney Int* 2017;92:440–52.
 29. Levin A, Stevens PE, Bilous RW, *et al.* Kidney disease: improving global outcomes (KDIGO) CKD work group. KDIGO clinical practice guideline for the evaluation and management of chronic kidney disease. *Kidney International Supplements* 2013;3:1–150.
 30. Yancy CW, Jessup M, Bozkurt B, *et al.* 2017 ACC/AHA/HFSA focused update of the 2013 ACCF/AHA guideline for the management of heart failure: a report of the American College of Cardiology/American Heart Association Task Force on Clinical Practice Guidelines and the Heart Failure Society of America. *Circulation* 2013;128:e240.
 31. Bilo H, Coentrao L, Couchoud C, *et al.* Clinical practice guideline on management of patients with diabetes and chronic kidney disease stage 3b or higher (eGFR <45 mL/min). *Nephrol Dial Transplant* 2015;30(Suppl 2):ii1–42.
 32. Fraccaro P, van der Veer S, Brown B, *et al.* An external validation of models to predict the onset of chronic kidney disease using population-based electronic health records from Salford, UK. *BMC Med* 2016;14:104.
 33. Ford DV, Jones KH, Verplancke JP, *et al.* The SAIL databank: building a national architecture for e-health research and evaluation. *BMC Health Serv Res* 2009;9:157.
 34. Lyons RA, Jones KH, John G, *et al.* The SAIL databank: linking multiple health and social care datasets. *BMC Med Inform Decis Mak* 2009;9:3.
 35. Levey AS, Stevens LA, Schmid CH, *et al.* A new equation to estimate glomerular filtration rate. *Ann Intern Med* 2009;150:604–12.
 36. Roalfo AK, Holder RL, Wilson S. Standardisation of rates using logistic regression: a comparison with the direct method. *BMC Health Serv Res* 2008;8:275.
 37. Stack AG, Casserly LF, Cronin CJ, *et al.* Prevalence and variation of chronic kidney disease in the Irish health system: initial findings from the National Kidney Disease Surveillance Programme. *BMC Nephrol* 2014;15:185.
 38. Aumann N, Baumeister SE, Rettig R, *et al.* Regional variation of chronic kidney disease in Germany: results from two population-based surveys. *Kidney Blood Press Res* 2015;40:231–43.
 39. Yap YS, Chuang KW, Chiang CJ, *et al.* Geographic variation of chronic kidney disease prevalence: correlation with the incidence of renal cell carcinoma or urothelial carcinoma? *Biomed Res Int* 2015;2015:427084.
 40. Brück K, Stel VS, Gambaro G, *et al.* CKD prevalence varies across the European general population. *J Am Soc Nephrol* 2016;27:2135–47.
 41. Kashani K, Shao M, Li G, *et al.* No increase in the incidence of acute kidney injury in a population-based annual temporal trends epidemiology study. *Kidney Int.* In Press. 2017;92:721–8.