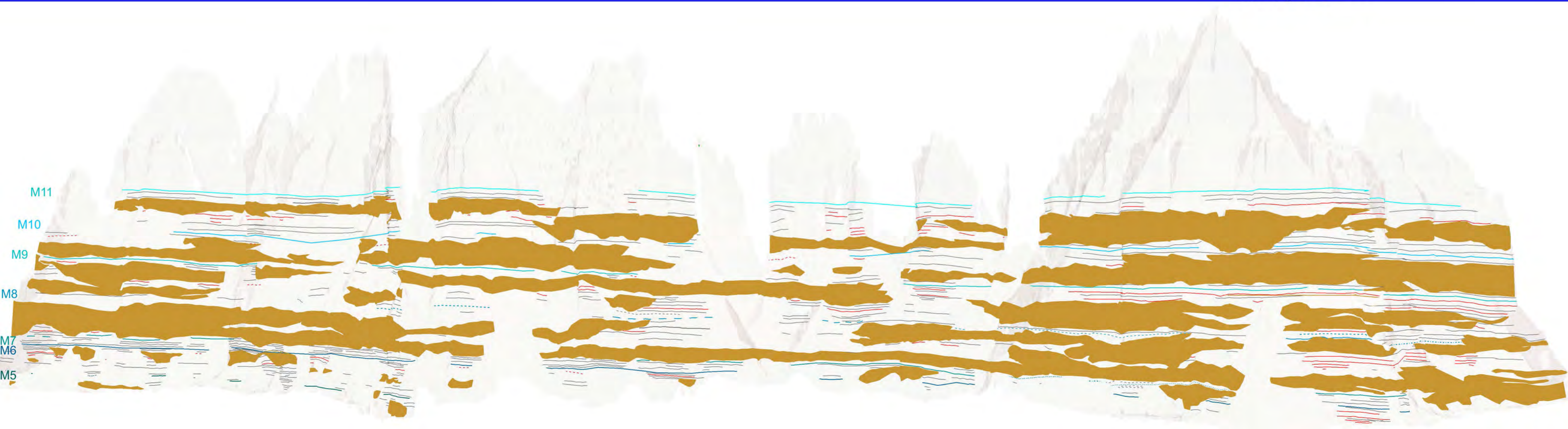
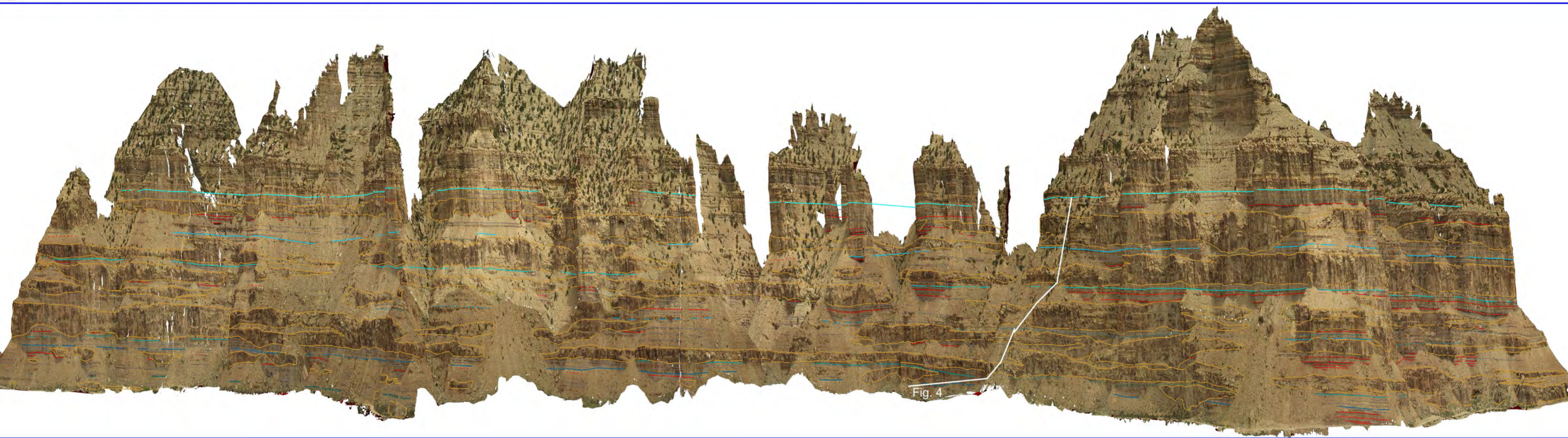
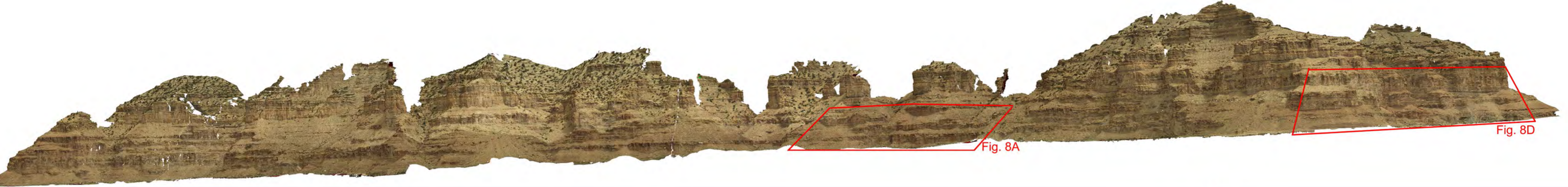


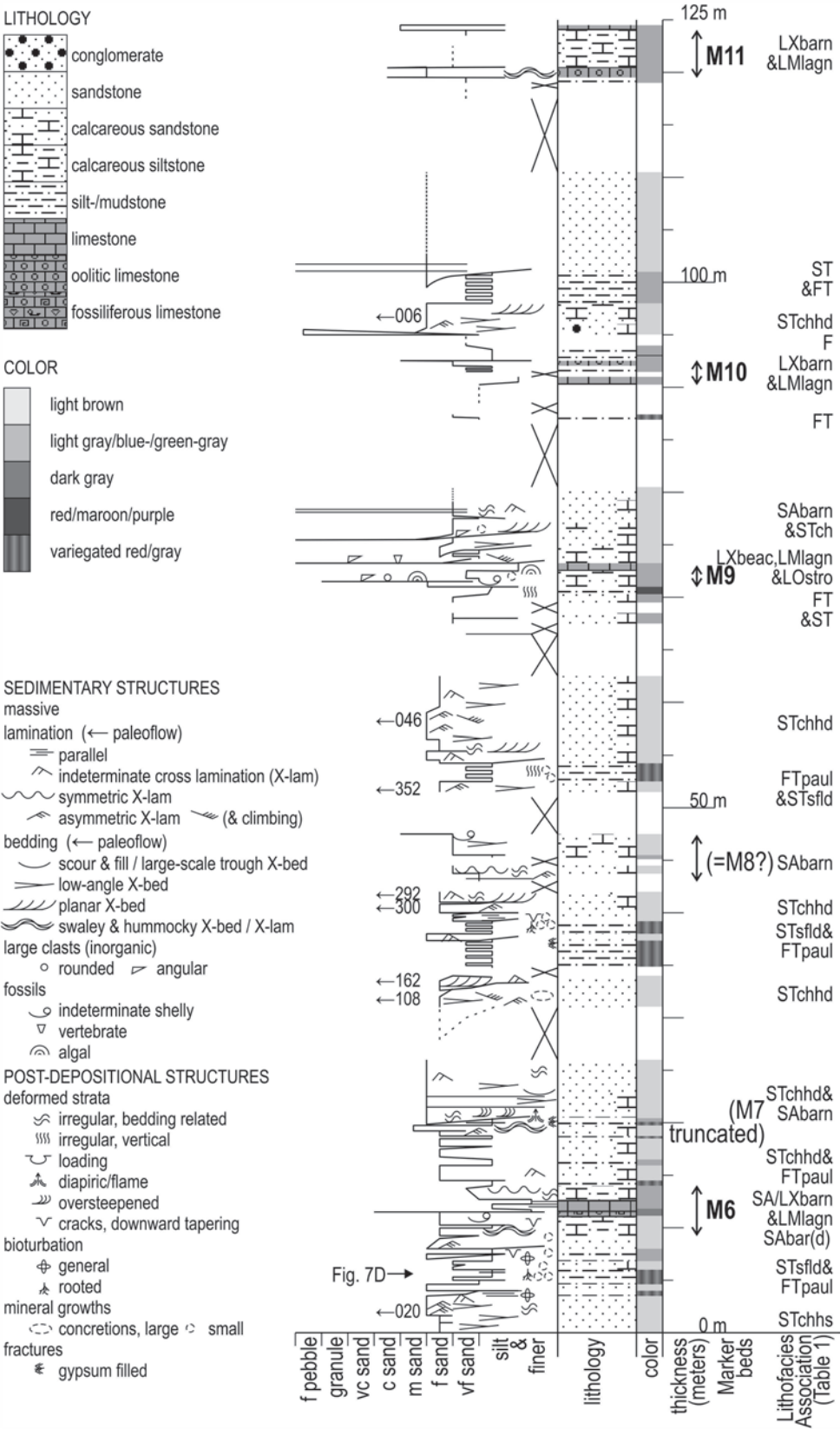
Example sedimentary features

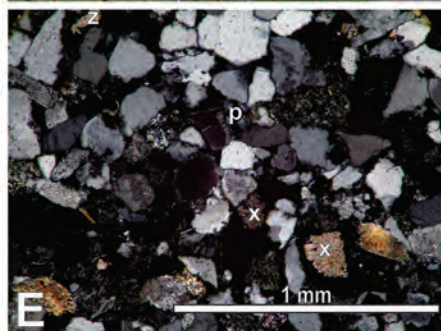
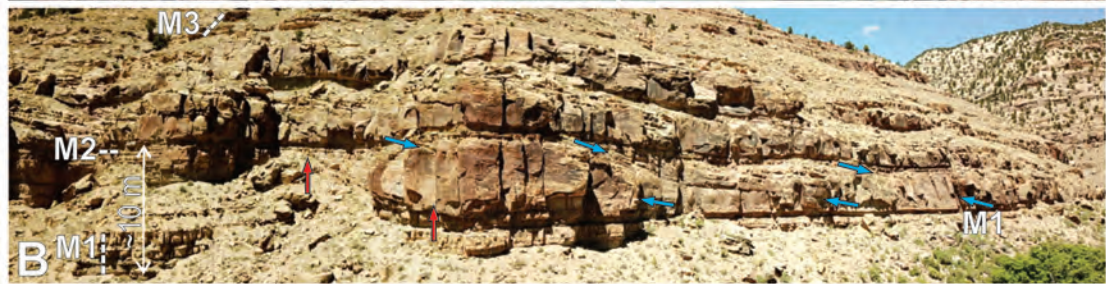


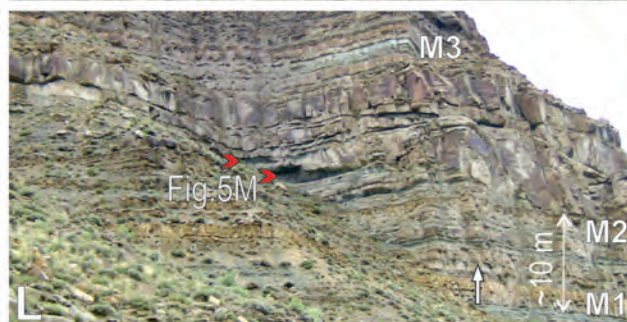
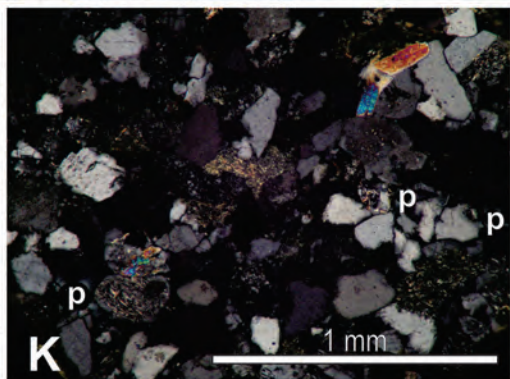
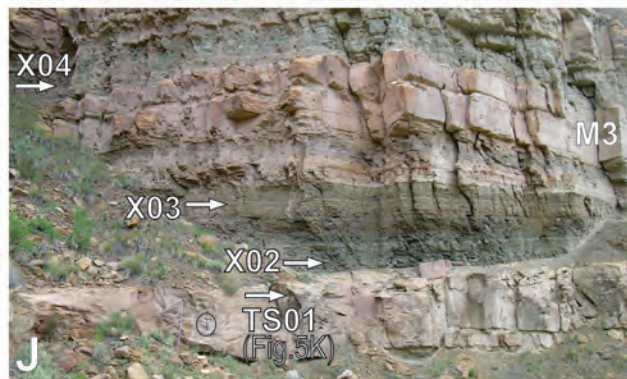
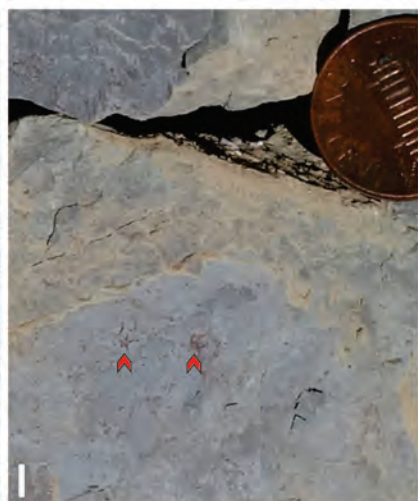
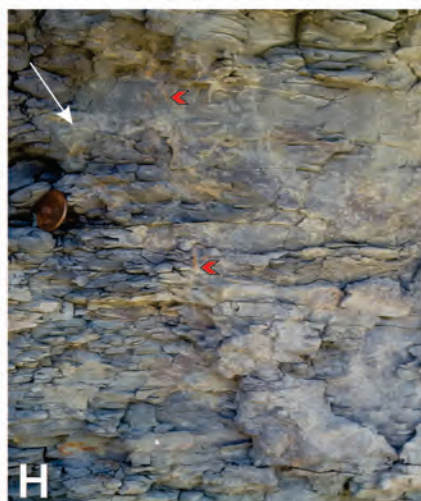
Delta Key:

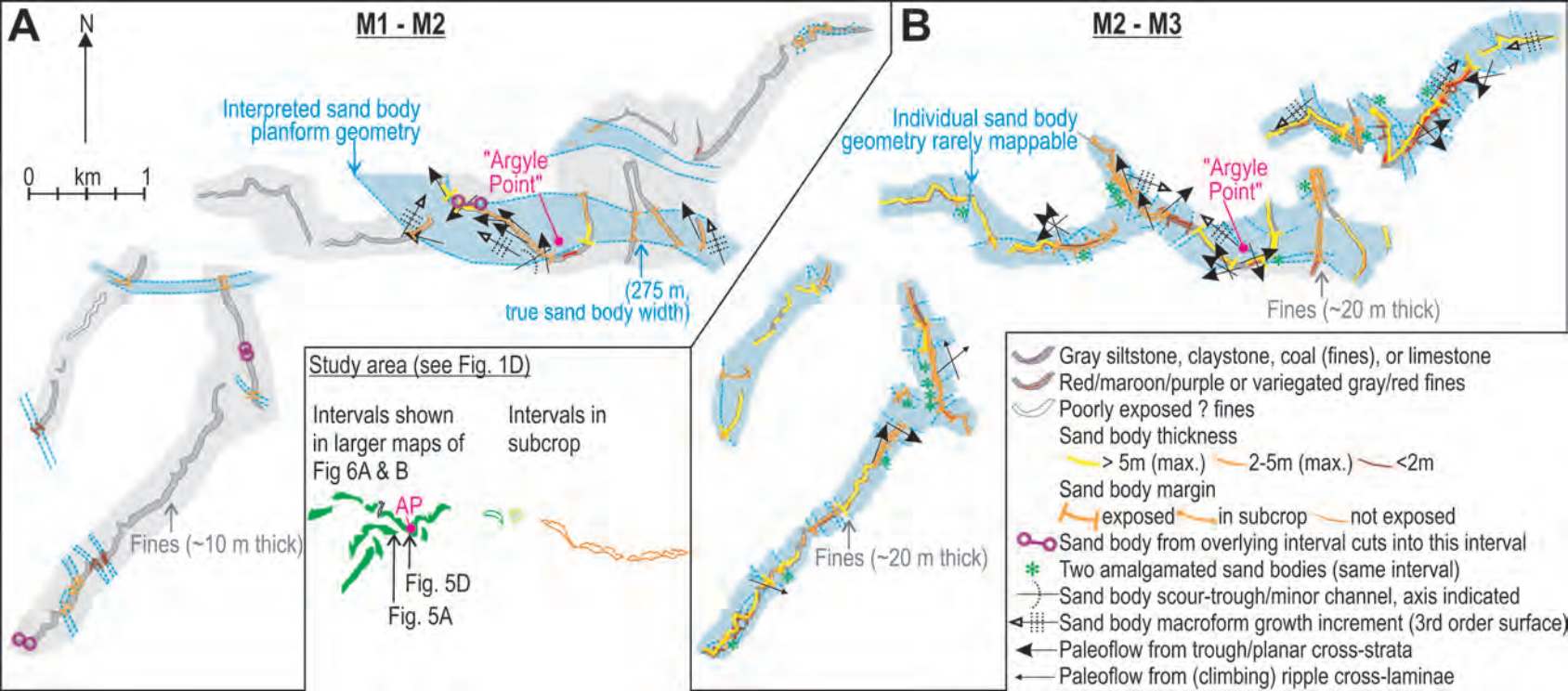
- A= Apex
 - B= River-influenced delta
 - C= Wave-influenced delta
- Subaerial delta plain:
- α =fluvial in-channel bar/isle
 - β =subaerial levee
 - γ =swamp-marsh (palludal)
 - δ =beach/barrier sands
- Subaqueous delta plain:
- a=distributary channel
 - b=terminal distributary channel
 - c=abandoned channels
 - d=crevasse splay
 - e=trunk channel
 - f=delta-top lake
- Delta front (lacustrine):
- 1=mid-ground mouth bar
 - 2=unate mouth bar
 - 3=subaqueous levee
 - 4=interdistributary bay
 - 5=shoal
 - 6=lagoon

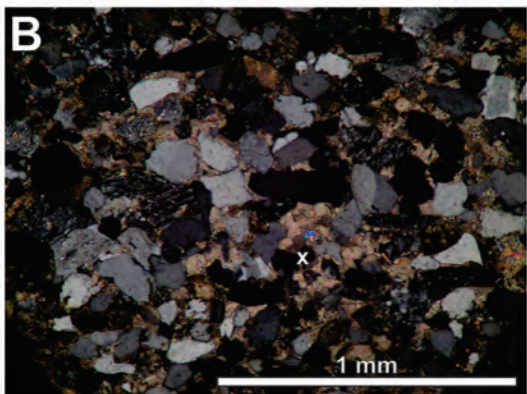
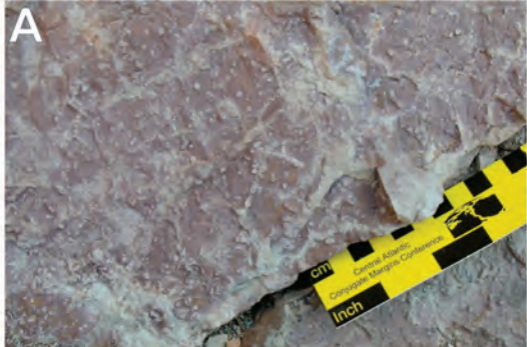


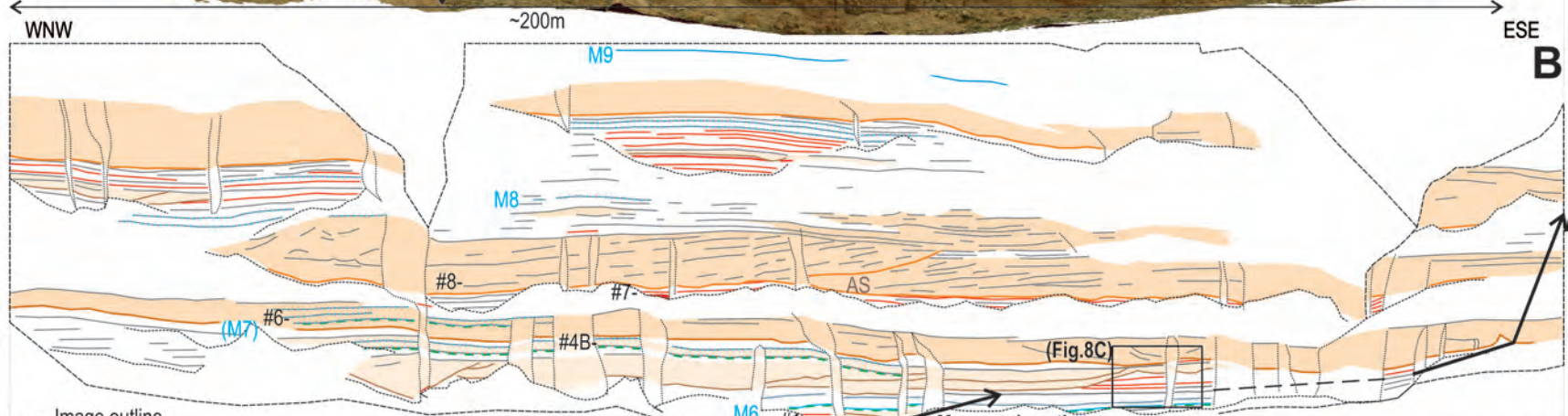




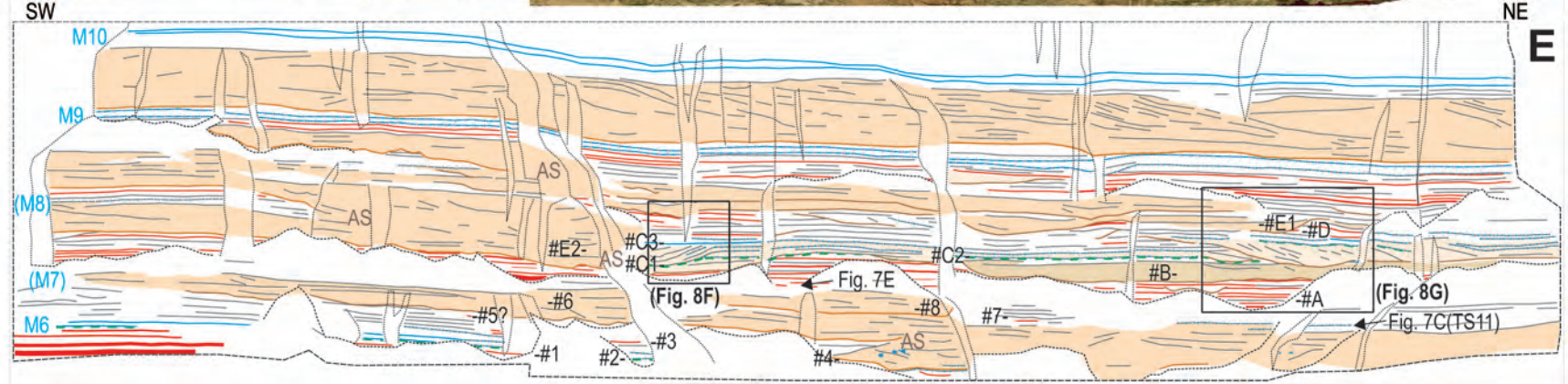
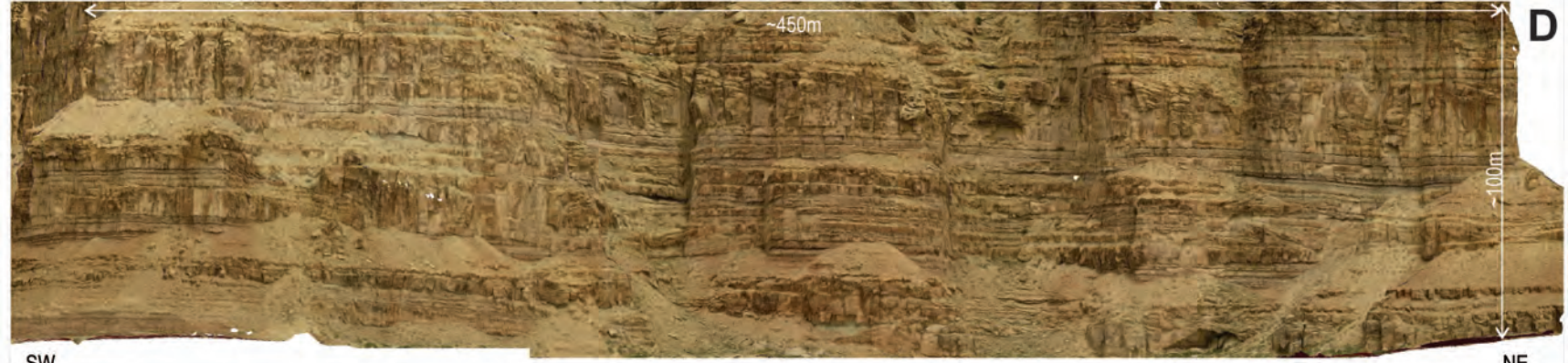
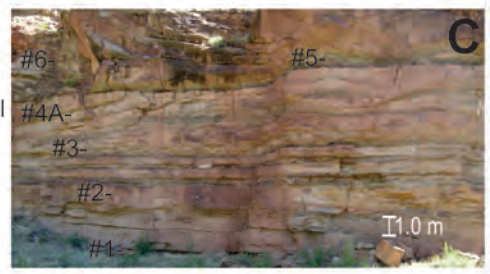








- Image outline
 // Cliff-face ~normal to view
 Top of scree slope
 Fine-medium sand body & truncating surface
 Very-fine sandstone & truncating surface
 AS Amalgamating sand bodies
 Red, gray mudstone
 Limestone - boulder
 Calcareous sand/mudstone
 (Interpreted flooding surface)
- (Interpretation:)
 #8. gray, lenticular m-f. sandstone (ST) - terrestrial, fluvial bar
 #7. <as #1> - terrestrial floodplain
 #6. gray, calc. m-f. sandsheet/amalgamated lenses (ST,SA) - terrestrial (terminal distributary?) fluvial
 #5. <as #1> - terrestrial floodplain
 #4B. gray, tabular, calcareous sandstone (SA) - lacustrine, subaqueous delta top shoal
 #4A. gray, lenticular, locally calc., vf. sandstone (ST) - terrestrial terminal distributary channel
 #3. <as #1> - terrestrial floodplain
 #2. gray sand-/grainstone, micrite - M6 (SA,LM,LX) - lacustrine shoreface
 #1. red mudstone, gray vf. silty sandstone (FT) - terrestrial floodplain



- (Interpretation:)
 (multiple recurrences of #D-#E1 possible)
 #E2. <as E1> truncates #B-#D
 #E1. lenticular, locally calc., f. sandstone (ST) - terrestrial, fluvial bar
 #D. <as #A> - terrestrial floodplain
 (multiple recurrences of #C possible)
 #C3. tabular, micritic to oolitic limestone (LM,LX) - lacustrine bar/shoal
 #C2. tabular calc. vf. - m. sand-/grain-stone (SA) - lacustrine interchannel shoal
 #C1. lenticular, calc. sandstone (ST,SA) - distributary channel & mouth bar
 #B. lenticular, locally calc., f. sandstone (Sr St/p) - terrestrial, fluvial bar
 #A. red mudstone, gray vf. silty sandstone (FT) - terrestrial floodplain
 #1- #8. See Fig. 8B above

