

## Acknowledgements

We thank the following:

Phil Bouchet, Francis Daunt, Mike Harris, Charles Paxton, Kate Searle and Beth Scott for their valuable input on modelling approaches and distribution maps.

Antti Below, Thomas Bregnballe, Bernard Cadiou, Volker Dierschke, Per Fauchald, Morten Frederiksen, Fredrik Haas, Martin Green, Kees Koffijberg, Roddy Mavor and David Schonberg-Alm for providing detailed information on seabird breeding colonies.

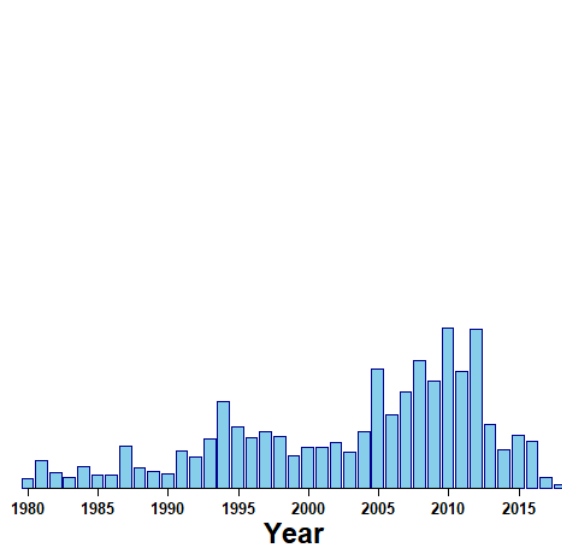
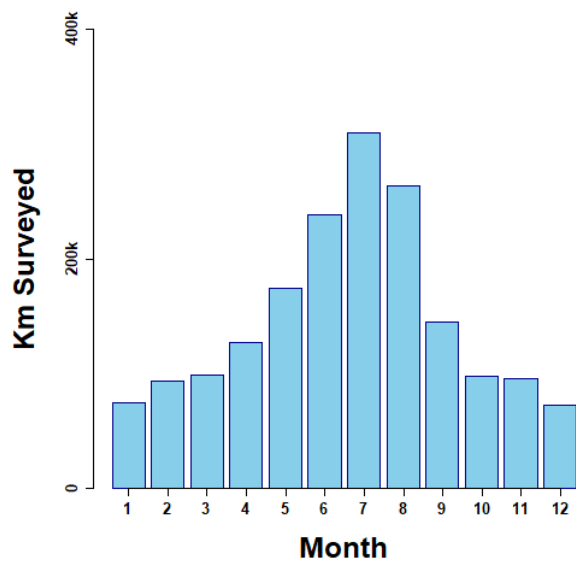
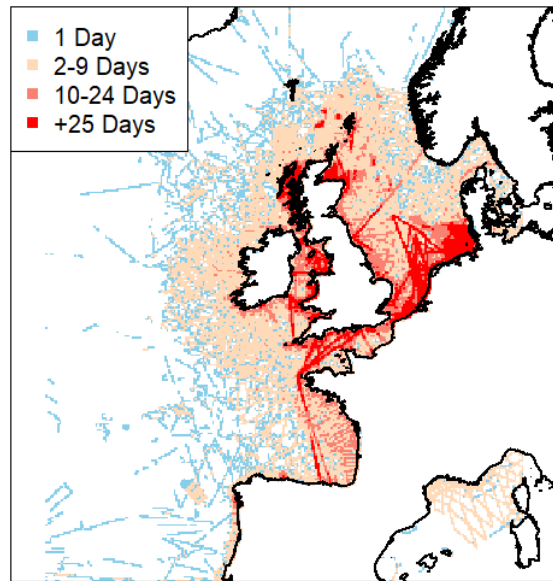
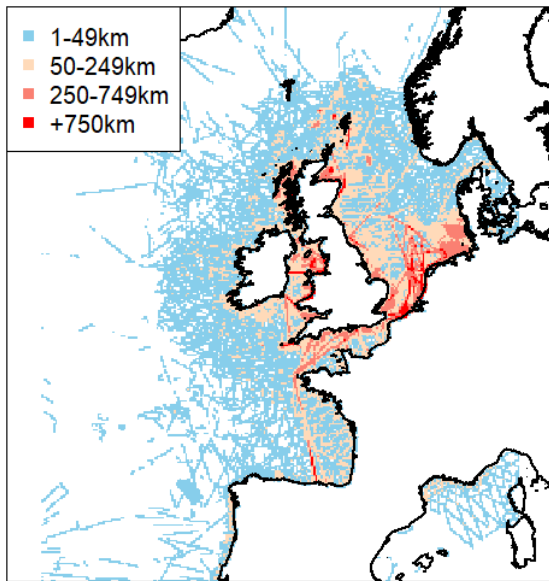
Colleagues, crew and volunteers who have performed surveys.

The following organisations for their support during surveys:

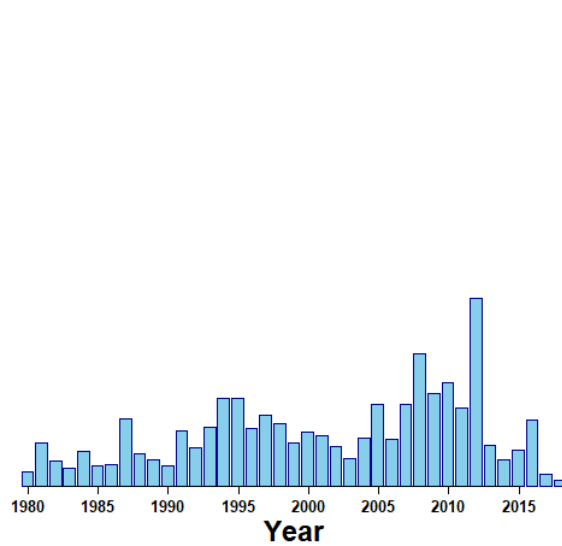
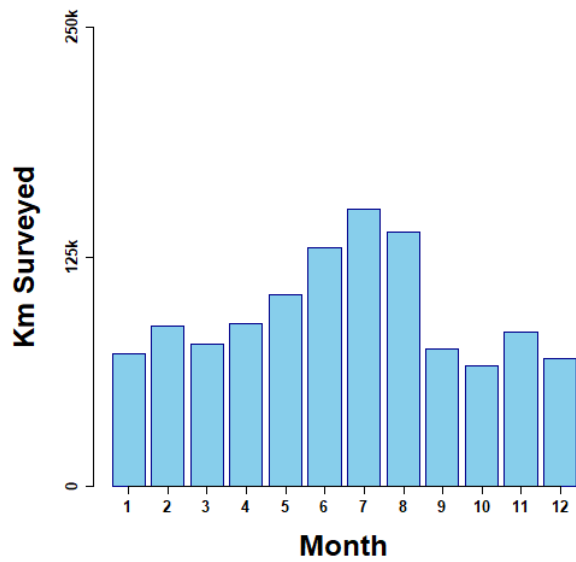
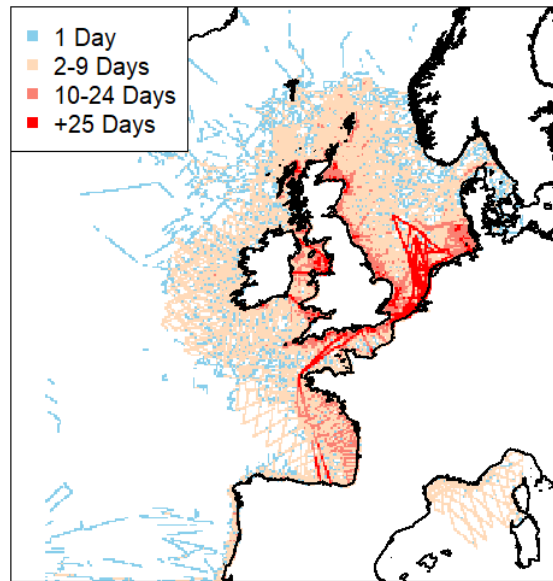
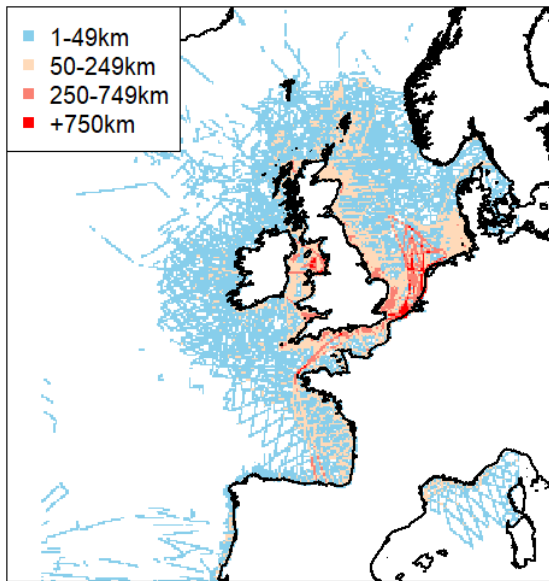
- Coastal Communities
- Cornwall Wildlife Trust
- Crown Estate (UK)
- Department of Agriculture, Environment and Rural Affairs (Republic Of Ireland)
- Department of Culture, Heritage and the Gaeltacht (Republic Of Ireland)
- Department of Economic Development and Infrastructure (Basque Country)
- Department for Environment, Food and Rural Affairs (UK)
- Department of Environment, Food and Agriculture (Isle Of Man)
- DONG Energy
- EDF
- Federal Ministry for the Environment, Nature Conservation and Nuclear Safety (Germany)
- Federal Agency for Nature Conservation (Germany)
- Federal Ministry of Food and Agriculture (Germany)
- French Agency of Biodiversity; Heritage Council (Ireland)
- Innovation of The Netherlands; International Fund for Animal Welfare
- Irish Marine Institute
- Joint Nature and Conservation Committee (UK)
- LIFE
- LIFE+INDEMARES
- Marine Science Scotland
- Ministry of Economic Affairs (Holland)
- Ministry of Economy, Industry and Competitiveness (Spain)
- Ministry of Environment (Galicia)
- Ministry of Environment (Spain)
- Ministry of Fishing (Galicia)
- Ministry of Environment and Food (Denmark)
- Ministry for the Ecological and Inclusive Transition of France (France)
- Ministry of Infrastructure and Water Management (Netherlands)
- Ministry of Agriculture, Fisheries and Food (Spain)
- Nature Agency and the Ministry of Economic Affairs; Agriculture (Denmark)
- National Development Plan (Ireland)
- Natural England
- Natural Resources Wales
- RWE nPower
- Scottish Natural Heritage
- SSE
- UK Oil and Gas
- Wildlife Trust of South and West Wales
- World Wide Fund for Nature.

**S1: Providers of seabird breeding colony locations and counts.**

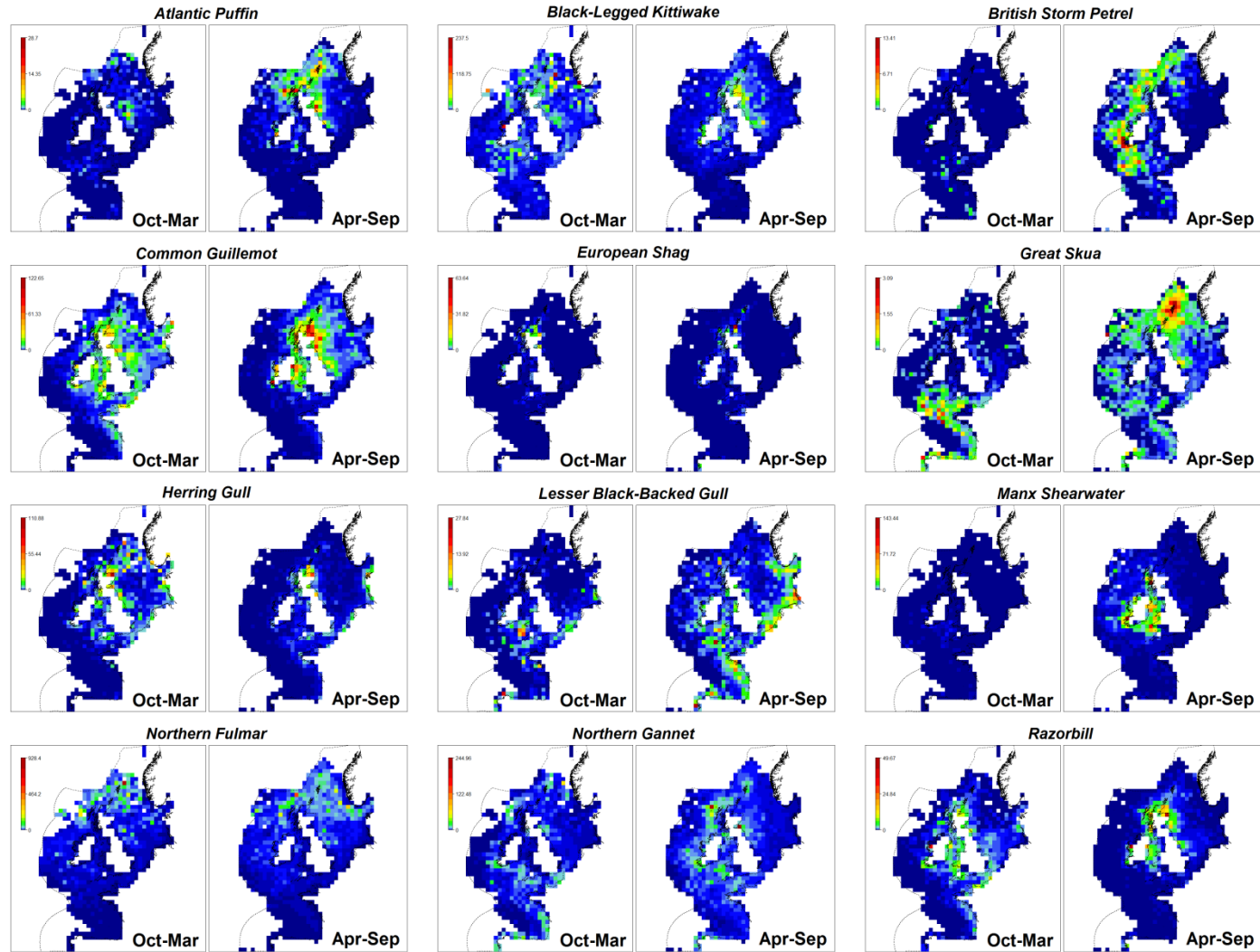
<b>Country</b>	<b>Source</b>
Belgium	Instituut voor Natuur- en Bosonderzoek
Denmark	Aarhus University
France	Agence française pour la biodiversité
Germany	BfN/Gavia EcoResearch
Holland	Bureau Waardenburg
Norway	SEAbird POPulations (SEAPOP)
Portugal	Sociedade Portuguesa para o Estudo das Aves
Spain	Sociedad Española de Ornitología
Sweden	Lund University
UK and Ireland	Joint Nature Conservation Committee



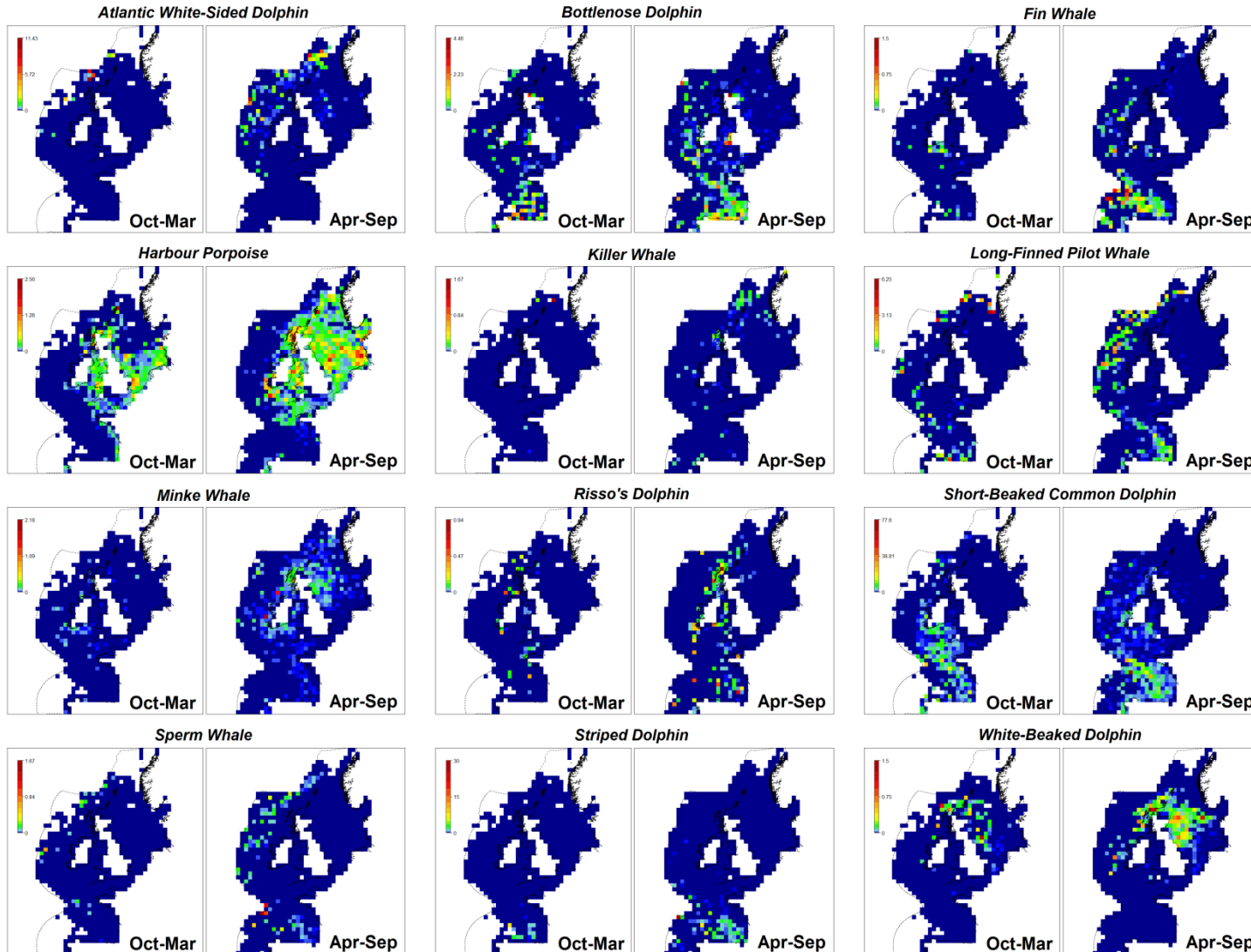
**S2:** Summaries of cetacean surveys showing spatial and temporal variations in distances travelled by vessels and aircraft, and spatial variations in the number of surveys per 10 x 10km cell.



**S3:** Summaries of seabird surveys showing spatial and temporal variations in distances travelled by vessels and aircraft, and spatial variations in the number of surveys per 10 x 10km cell.



**S4:** Recorded densities (animals per km<sup>2</sup>) of seabirds at seasonal and 50km resolution.



S5: Recorded densities (animals per km<sup>2</sup>) of cetaceans at seasonal and 50km resolution.

**S6: Spatial and temporal extent of survey coverage divided into providers.**

Source	Distance	Longitude Range	Latitude Range	First Year	Last Year	Years Covered	Months Covered	Days Covered
	Km	Km	Km					
ATLANCET Surveys	4250	426	636	2002	2002	1	1	7
Aarhus University	1332	100	49	2011	2013	3	2	4
Bundesamt für Naturschutz	<b>6972</b>	<b>347</b>	<b>308</b>	<b>2011</b>	<b>2013</b>	<b>2</b>	<b>3</b>	<b>13</b>
BIOMAN Surveys	5913	474	533	2016	2018	3	1	53
Bureau Waardenburg	247434	535	504	1991	2017	27	12	440
Cardigan Bay Marine Wildlife Centre	7016	51	39	2002	2007	5	7	219
Cetacean Research and Rescue Unit	7219	106	28	2009	2015	4	6	199
CODA Surveys	9638	1027	2092	2007	2007	1	1	26
Coordinadora para o Estudo dos Mamíferos Mariños	25420	1294	1179	2005	2015	8	7	265
Cornwall Wildlife Trust	3875	59	20	2009	2010	2	9	71
Crown Estate	26728	317	446	2009	2013	5	12	37
European Seabird At Sea	675359	3267	3988	1980	2011	29	12	3812
EVHOE Surveys	9890	730	750	2009	2015	7	2	168
Hebridean Whale and Dolphin Trust	66913	220	387	2002	2015	14	10	1163
IBTS Surveys	3315	892	805	2007	2016	10	2	76
Instituut voor Natuur- en Bosonderzoek	101880	968	533	1992	2014	23	12	916
International Fund for Animal Welfare	55889	6783	4492	1996	2012	9	9	396
Institute for Marine Resources and Ecosystem Studies	26875	264	474	2008	2013	6	11	57
Irish Whale and Dolphin Group	140708	4113	1490	2001	2016	16	12	1142
Joint Nature and Conservation Committee	80240	950	1300	2009	2011	3	12	393
JUVENA Surveys	5941	611	475	2012	2015	3	3	68
KOSMOS Surveys	21142	3717	1790	2015	2017	3	8	182
Manx Whale and Dolphin Trust	6331	81	76	2007	2015	9	11	88
Marine Awareness North Wales	231	44	25	2002	2004	3	4	11
Marine Science Scotland	6691	345	350	2012	2014	3	10	18
MARINELife	71324	710	1413	2008	2014	7	12	257
National Parks and Wildlife Service	3154	668	943	2014	2014	1	3	38
Natural England	5127	619	335	2014	2018	3	4	8
NORCET Surveys	36702	141	338	2004	2015	10	6	368
ObSERVE Surveys	41103	735	811	2015	2017	3	9	67
ORCA	148822	6915	5665	2006	2015	10	12	847
PELACUS Surveys	11466	671	402	2007	2016	10	3	229
PELTIC Surveys	5420	380	307	2015	2017	3	2	58
PELGAS Surveys	13890	393	633	2003	2014	12	3	340
Royal Belgium Institute for Natural Sciences	2685	80	72	2008	2013	6	7	24
Royal Society for the Protection of Birds	897	112	93	2015	2015	1	1	8
RWE nPower	2272	40	25	2003	2004	2	9	18
SAMM Surveys	89697	1666	1246	2011	2012	2	8	8
SCANS 1	21168	1752	1543	1994	1994	1	3	34
SCANS 2	34235	1727	2925	2005	2005	1	3	35
Scottish Natural Heritage	2643	103	164	2016	2016	1	2	3
Sea Watch Foundation	226135	1386	3860	1978	2016	38	12	2594
The University of Veterinary Medicine Hannover	68272	373	247	2005	2013	9	10	133
SIAR Surveys	2305	461	435	2000	2000	1	2	20
Sociedade Portuguesa para o Estudo das Aves	131451	3200	2307	2004	2014	11	12	992
UK Oil and Gas	1809	280	130	2013	2013	1	2	2
Universität zu Kiel	34606	677	727	2008	2016	9	11	160
University Of Aberdeen	13812	98	93	2009	2011	3	12	84
University Of Swansea	4380	275	412	2004	2008	3	4	16
Whale and Dolphin Conservation	9758	292	1134	1999	2009	11	10	127
Wildfowl and Wetlands Trust Ltd	152474	725	904	2001	2011	11	12	447

S7: Survey coverage divided into platform and transect method.

<b>Taxa</b>	<b>Transect-Design</b>	<b>Aerial (km)</b>	<b>Vessel (km)</b>	<b>Digital (km)</b>
Flying Seabirds	ESAS	0	0	-
	Line-Transect	196271	56139	-
	Strip-Transect	388113	971512	40935
Seabirds on the Water	ESAS	152474	900188	-
	Line-Transect	43797	56139	-
	Strip-Transect	388113	71324	40935
Cetaceans	ESAS	152474	899291	-
	Line-Transect	301891	1023663	-
	Strip-Transect	261693	0	44810



**S8: Numbers of sightings and animals seen.**

<b>Taxa</b>	<b>Species</b>	<b>Sightings</b>	<b>Animals</b>
Cetaceans	Atlantic White-Sided Dolphin	847	12670
	Bottlenose Dolphin	6674	35109
	Fin Whale	1689	2719
	Harbour Porpoise	41685	63958
	Killer Whale	256	1239
	Long-Finned Pilot Whale	1426	11286
	Minke Whale	3639	4595
	Risso's Dolphin	746	3737
	Short-Beaked Common Dolphin	11253	156290
	Sperm Whale	560	889
	Striped Dolphin	1007	18691
	White-Beaked Dolphin	2369	9219
Seabirds	Atlantic Puffin	63635	133234
	Black Legged Kittiwake	190935	582091
	British Storm Petrel	19230	33929
	Common Guillemot	255652	561566
	European Shag	8740	30144
	Great Skua	18764	22825
	Herring Gull	74630	293501
	Lesser Black Backed Gull	65884	232299
	Manx Shearwater	51287	228914
	Northern Fulmar	395782	1205083
	Northern Gannet	234737	502248
	Razorbill	41298	96575

**Word Files (.docx) showing Species Distribution Model outputs**

**S9:** Images showing predicted distributions per species and month.

**S10:** Images showing uncertainty in predicted distributions per species and month. Uncertainty was illustrated by calculating the absolute difference between 5% and 95% confidence intervals of predicted densities, and then dividing this by the maximum predicted density for that species.