

Persistence and resistance as complementary bacterial adaptations to antibiotics

T. VOGWILL¹, A. C. COMFORT, V. FURIÓ & R. C. MACLEAN

Department of Zoology, University of Oxford, Oxford, UK

Keywords:

antibiotic resistance;
bacteria;
comparative studies;
life-history trade-offs;
persistence.

Abstract

Bacterial persistence represents a simple of phenotypic heterogeneity, whereby a proportion of cells in an isogenic bacterial population can survive exposure to lethal stresses such as antibiotics. In contrast, genetically based antibiotic resistance allows for continued growth in the presence of antibiotics. It is unclear, however, whether resistance and persistence are complementary or alternative evolutionary adaptations to antibiotics. Here, we investigate the co-evolution of resistance and persistence across the genus *Pseudomonas* using comparative methods that correct for phylogenetic nonindependence. We find that strains of *Pseudomonas* vary extensively in both their intrinsic resistance to antibiotics (ciprofloxacin and rifampicin) and persistence following exposure to these antibiotics. Crucially, we find that persistence correlates positively to antibiotic resistance across strains. However, we find that different genes control resistance and persistence implying that they are independent traits. Specifically, we find that the number of type II toxin–antitoxin systems (TAs) in the genome of a strain is correlated to persistence, but not resistance. Our study shows that persistence and antibiotic resistance are complementary, but independent, evolutionary adaptations to stress and it highlights the key role played by TAs in the evolution of persistence.

Introduction

It is often assumed that populations of isogenic bacteria are phenotypically and physiologically identical. However, even under laboratory conditions specifically designed to generate homogeneous conditions, bacteria almost always show considerable phenotypic variation within a population (Dubnau & Losick, 2006; Graumann, 2006; Veening *et al.*, 2008; Lidstrom & Konopka, 2010). For example, a small fraction of cells in clonal bacterial populations are phenotypically resistant to sudden exposure to stress, a phenomenon that has been termed ‘persistence’. Although first described in the 1940s (Hobby *et al.*, 1942; Bigger, 1944a, b), the interest in bacterial persistence has increased in the last

15 years (Lewis, 2007; Allison *et al.*, 2011; Balaban, 2011; Fauvart *et al.*, 2011). This is because persistence protects bacteria against a number of clinically relevant stressors including high doses of antibiotics, but also phagocytosis by macrophages (Ramage *et al.*, 2009; Helaine *et al.*, 2014), and consequently, persistence is thought to contribute to many chronic and recurrent infections (Lewis, 2007, 2008; Allison *et al.*, 2011; Balaban, 2011). Whether or not persister cells are dormant remains an ongoing discussion (Balaban *et al.*, 2013; Wood *et al.*, 2013), but mechanistically persisters represent a subset of cells recalcitrant to sudden stress. Although persisters are known to be induced by certain stimuli, many persister cells are formed prior to the onset of any stress as a result of stochastic processes operating at a cellular level (Balaban *et al.*, 2004). Persisters therefore represent a form of evolutionary bet-hedging (Slatkin, 1974; Philippi & Seger, 1989); although most cells of a given genotype will grow in favourable conditions, a subset of cells differentiate into a stress tolerant state to insure against sudden environmental change.

Correspondence: Craig MacLean or Tom Vogwill, Department of Zoology, University of Oxford, Oxford, OX1 3PS, UK.

Tel.: +44 1865 271234; fax: +44 1865 310447; e-mails: craig.maclean@zoo.ox.ac.uk or t.vogwill@imperial.ac.uk

¹Present address: Department of Life Sciences, Imperial College London, Silwood Park Campus, Ascot, Berkshire, UK

Persistence is an example of phenotypic plasticity, and represents one evolutionary strategy for coping with stressful environments, and is often referred to as antibiotic tolerance (Lewis, 2008; Kint *et al.*, 2012; Fridman *et al.*, 2014). Alternatively, bacterial populations can adapt to stress by evolving more conventional non-plastic adaptations which allow continued population growth in the presence of the stress, which in the context of antibiotics is referred to as resistance. Genetically elevated levels of resistance typically evolve by chromosomal mutations that modify the targets of antibiotics or by acquiring mobile elements carrying genes that chemically modify or degrade antibiotics (reviewed in Blair *et al.*, 2015). Whereas persistence allows a small fraction of a bacterial population to escape from stress in a nonreplicative state, genetic resistance allows bacteria to continue to reproduce under stressful conditions. Very broadly, theory predicts that the constancy of exposure to stress is crucial in determining whether selection favours the evolution of tolerance or resistance (Kussell *et al.*, 2005). If a selection pressure is constant, there is no advantage to a plastic trait such as tolerance. Indeed, in the case of persistence, increased levels could not evolve in response to continuous exposure to stress as cells exiting from a persistent to a replicative state would be killed by the stressor. In contrast, intermittent selection could favour either elevated persistence or resistance.

As some environments can favour the evolution of either resistance or tolerance, whether persistence and antibiotic resistance represent complementary or alternative adaptations is unclear. Intuitively, a population which has evolved a high level of antibiotic resistance will experience less selection for high-level persistence, as persistence is not required to survive novel stresses. Similarly, in a population with high-level persistence, a resistant mutant will have a smaller selective benefit. Conversely, as both are fundamentally adaptations to the same environmental stress, both may evolve in response to the same selection pressure. Empirical support for the relationship between persistence and resistance is mixed. For example, several papers have shown that there is no association between antibiotic susceptibility and persistence between clones from the same species (Stewart & Rozen, 2012; Hofsteenge *et al.*, 2013), suggesting that resistance and persistence may be unrelated. However, these studies did not control for the potentially confounding effects of phylogenetic nonindependence, so their results should be treated with caution. In contrast, analysis of bacteria from chronic infections suggests the two traits may have a more complicated relationship. The evolution of antibiotic resistance during chronic infections is a problem of significant medical importance (Hogardt & Heesemann, 2013; Smith *et al.*, 2013; Cullen & McClean, 2015). However, despite repeated exposures to antibiotics, not all chronic infections evolve antibiotic resistance, which

has sometimes been referred to as the paradox of chronic infections (Lewis, 2010a, b). Instead, longitudinal analysis of isolates from chronic infections suggests that some populations evolve persistence but not resistance (LaFleur *et al.*, 2010; Mulcahy *et al.*, 2010). This suggests that in some circumstances, resistance and persistence may represent alternative adaptations to the same selection pressure.

Although data on the relationship between resistance and persistence at a microevolutionary scale are limited, there is even less evidence at larger evolutionary scales. Therefore, to further explore the relationship between persistence and resistance, we tested for a correlation between the two types of defence strategies from bacteria from different strains of *Pseudomonas*. We wished to test whether different strains adopted fundamentally different strategies with coping with stress and whether some strains evolve high resistance but low persistence, whereas some favoured *vice versa*. If stressful environments generate selection for both resistance and persistence, then these traits should be positively correlated across strains. On the other hand, if persistence and resistance are alternative evolutionary strategies, then a negative correlation should exist between these traits. Finally, it is possible that there is no general relationship between persistence and resistance. Phylogenetic nonindependence can lead to spurious correlations between traits across strains that are driven by common ancestry. To account for this problem, we tested for associations between persistence and resistance using comparative methods that explicitly account for the phylogeny of *Pseudomonas* (Vogwill *et al.*, 2014). Specifically, trait-association studies can be biased by unequal phylogenetic relatedness. In other words, traits can appear associated because closely related strains are more likely than average to have similar phenotypes, and thereby obscure any actual relationship between the traits from differing branches of a phylogeny.

The second aim of this study was to explore the genetic mechanisms underpinning this variation in persistence. Although the mechanistic basis of persistence was long seen as highly complicated and elusive, recent work has shown that type II toxin-antitoxin systems (TAs) play a central role in persister formation. Type II TAs encode a toxin protein and corresponding antitoxin protein (Schuster & Bertram, 2013). The antitoxin neutralizes the toxin, preventing the activity of the toxin when both are present. The antitoxins in these systems are either less stress tolerant or have a shorter half-life than the toxins. Therefore, certain stresses (Maisonneuve *et al.*, 2013), or simply stochastic gene expression (Fasani & Savageau, 2013), can result in the toxin becoming active. Several different lines of evidence implicate type II TAs in persister formation (Lewis & Hansen, 2013; Schuster & Bertram, 2013; Holden, 2015). For example, the first mutant isolated with a higher persister fraction was an *Escherichia coli* which

had a mutation in the *HIP*A toxin gene (Moyed & Bertrand, 1983). Moreover, by sequentially knocking out type II TAs, it has been experimentally demonstrated the number of TAs in a genome is proportional to the number of persisters within that population (Maisonneuve *et al.*, 2011). However, to our knowledge, there are no comparative tests of this link between type II TA frequency and persister formation. We therefore used our experimental data to test the hypothesis that the number of TAs within a genome would predict the level of persistence but not resistance. This would allow us to separate whether the relationship between resistance and persistence was a result of a direct mechanistic link.

Materials and methods

Strains

The eight strains of *Pseudomonas* are listed in Fig. 1. Prior to experimentation, all strains were stored in 20% glycerol at -80°C . Strains were cultured in liquid King's B media (KB), at 30°C with constant shaking at 250 rpm.

Kill curves

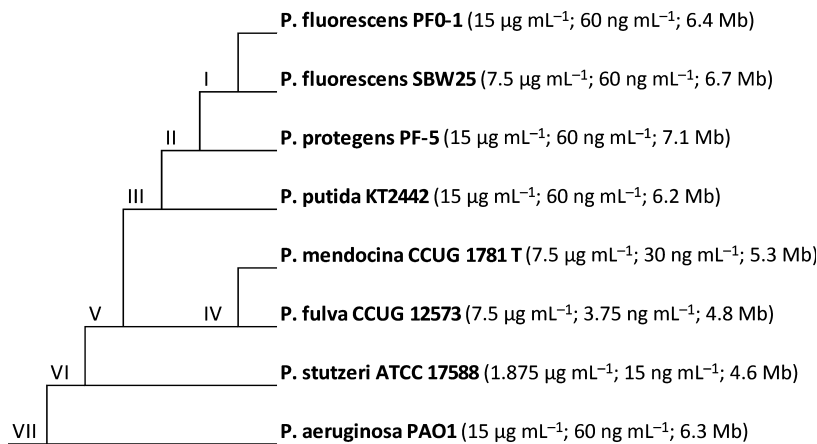
We define persistence as the number of cells surviving 4 h of antibiotic exposure. To assay the level of persistence of our bacterial isolates, we performed survival curves for each strain of bacteria for two antibiotics. We use the DNA gyrase inhibitor, ciprofloxacin, and the RNA polymerase inhibitor, rifampicin. These antibiotics have different cellular targets and are chemically distinct. Each bacterial isolate was initially cultured overnight in liquid King's B media (KB) at 30°C with constant shaking at 250 rpm. Samples were then diluted 20-fold into fresh KB media and recultured for 2 h to standardize all culture to exponential phase growth. After 2 h, an aliquot of this culture was plated to determine its density, after which the remaining culture had the relevant

antibiotic added to it. After 4 h, another aliquot of this culture was plated to redetermine its density, and the level of persistence was calculated as the proportion of bacteria surviving antibiotic exposure. This assay was performed for both antibiotics, at the MIC (minimum inhibitory concentration, see below), $2\times$ and $4\times$ MIC for the strain with highest MIC for that antibiotic. Conveniently, this range of doses included $4\times$ the MIC for seven of the strains to each antibiotic. For the strains with $4\times$ MIC outside this range, we performed additional kill curves, specifically *P. fulva* CCUG 12573 to rifampicin and *P. stutzeri* ATCC 17588 to ciprofloxacin. Pilot kill curves were initially performed in which the density of bacteria was assayed every hour for 6 h post-antibiotic exposure (Fig. 2). Four hours was found to be representative to the level of persistence regardless of time period for the antibiotics included here.

Resistance profiles

The resistance profiles for these strains were taken from a manuscript in preparation by Furio and Maclean. Briefly, to assay the resistance of our bacterial isolates, the MICs were determined by EUCAST standard methods for each of 24 antibiotics. Five to ten morphologically similar colonies of each strain were suspended in sterile saline solution (NaCl 0.9%). A sample of this suspension was then used to inoculate approximately 10^5 cells into each well of a microtitre plate contacting a two-fold dilution series of a particular antibiotic. The plate was then incubated for 24 h at 30°C , after which the optical density at 595 nm was measured using a Bio-Tek Synergy 2 microplate reader (Bio-Tek, Winooski, VT, USA). The lowest antibiotic concentration at which growth had been completely inhibited was considered the MIC. This was repeated three times for each antibiotic by strain combination. This was performed for a total of 24 antibiotics: ceftazidime, cefotaxime, ceftriaxone, meropenem, piperacillin, carbencillin, azteronam, kanamycin, streptomycin, gentamycin, amikacin,

Fig. 1 Schematic of the study system showing the phylogenetic relationship of the strains. The numbers following each strain's name represent the minimum inhibitory concentrations to rifampicin and ciprofloxacin, respectively, followed by the strain's genome size.



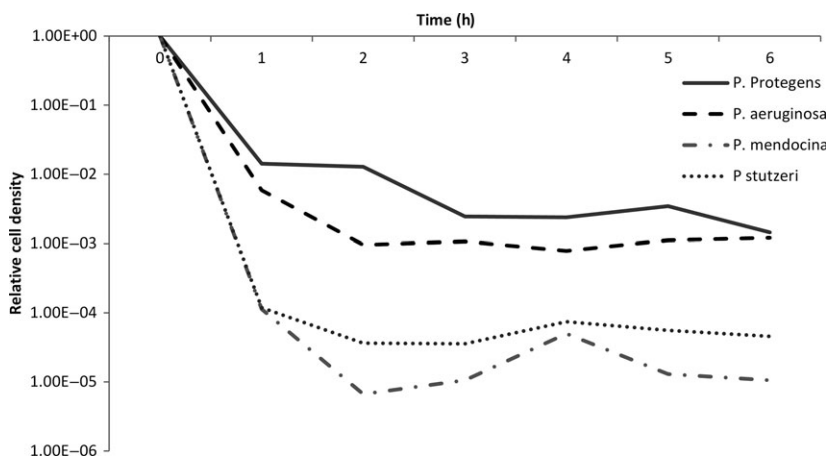


Fig. 2 Example of the kill curves used to assay persistence, for four bacterial strains at one concentration of an antibiotic. An initial sample is plated at 0 h, after which antibiotics are immediately added to each tube. Subsequent samples are then plated every hour for 6 h. Cell densities are expressed relative to the density at 0 h.

tobramycin, ciprofloxacin, levofloxacin, feroxacin, colistin, polymyxin B, sulfamethoxazole, mafenide, chloramphenicol, rifampicin, fosfomycin, spectinomycin and tetracycline. All antibiotics were ordered from Sigma, and stocks were prepared according to the manufacturer's instructions and stored at -20°C .

The MICs of different antibiotics can vary across several magnitudes of scale, rendering a raw mean across different antibiotics largely meaningless. For example, some antibiotics are active at ng mL^{-1} , whereas others require mg mL^{-1} . Therefore, to provide a general measure of resistance, we standardize the differing antibiotics by first calculating a z-score for each strain to each antibiotic. A z-score is a dimensionless standardized variable, calculated as the difference between a variable and its mean, standardized by dividing by the standard deviation of the mean. For each antibiotic, MICs were first log-transformed so that they would be on a linear scale, then all three replicates for each strain-antibiotic combination were averaged prior to z-scores being calculated. As some of the antibiotics used are from the same family, we averaged z-scores for antibiotics of the same family together. This reduced our 24 scores to just 10: beta-lactams, aminoglycosides, fluoroquinolones, polymyxins, sulphonamides, chloramphenicol, rifampicin, fosfomycin, spectinomycin and tetracycline. Finally, we took the average of those 10 z-scores as our resistance measurement for each strain.

Phylogenetic analysis

Trait-association studies can be biased by unequal phylogenetic relatedness. In other words, traits can appear associated because closely related strains are more likely than average to have similar phenotypes, and thereby obscure any actual relationship between the traits from differing branches of a phylogeny. Here, we control for this using phylogenetic independent contrasts (PICs) performed using the method of Felsenstein (Felsenstein, 1985), calculated using the *Pseudomonas* phylogeny

from Vogwill *et al.* (2014). In short, this method compares the change in a trait between neighbouring nodes or tips and then standardizes for the distance between these nodes/tips, thereby controlling for some strains being more closely related than others. When this is performed for more than one trait, the size or direction of these contrasts can then be analysed to look for correlated evolution of different traits. For the eight strains in this study system, we can calculate seven contrasts. However, as it is customary to constrain the correlation of these traits through the origin, there is no loss of statistical power.

Bioinformatic analysis of toxin-antitoxin systems

The number of toxin-antitoxin pairs per strain was downloaded from the Toxin-Antitoxin Database (TADB). This database provides a confidence score for each TA loci as a percentage. We use anything predicted to be a TAs with at least 50% confidence from the TADB. Note that this value correlates with both anything reported as a TAs in the TADB, as well as with the number of TAs reported with 90% confidence.

Statistical analysis

All statistical tests were performed in SPSS 16 (SPSS Inc., Chicago, IL, USA). Variation in persistence was analysed using general linear models and associates between different traits using phylogenetically corrected correlations. Proportions of variances explained were calculated using standard methods.

Results

Persistence varies between strains, antibiotic and doses of antibiotic

Using kill curves, we measured levels of persistence for eight isolates of *Pseudomonas* (Fig. 1) to three doses of

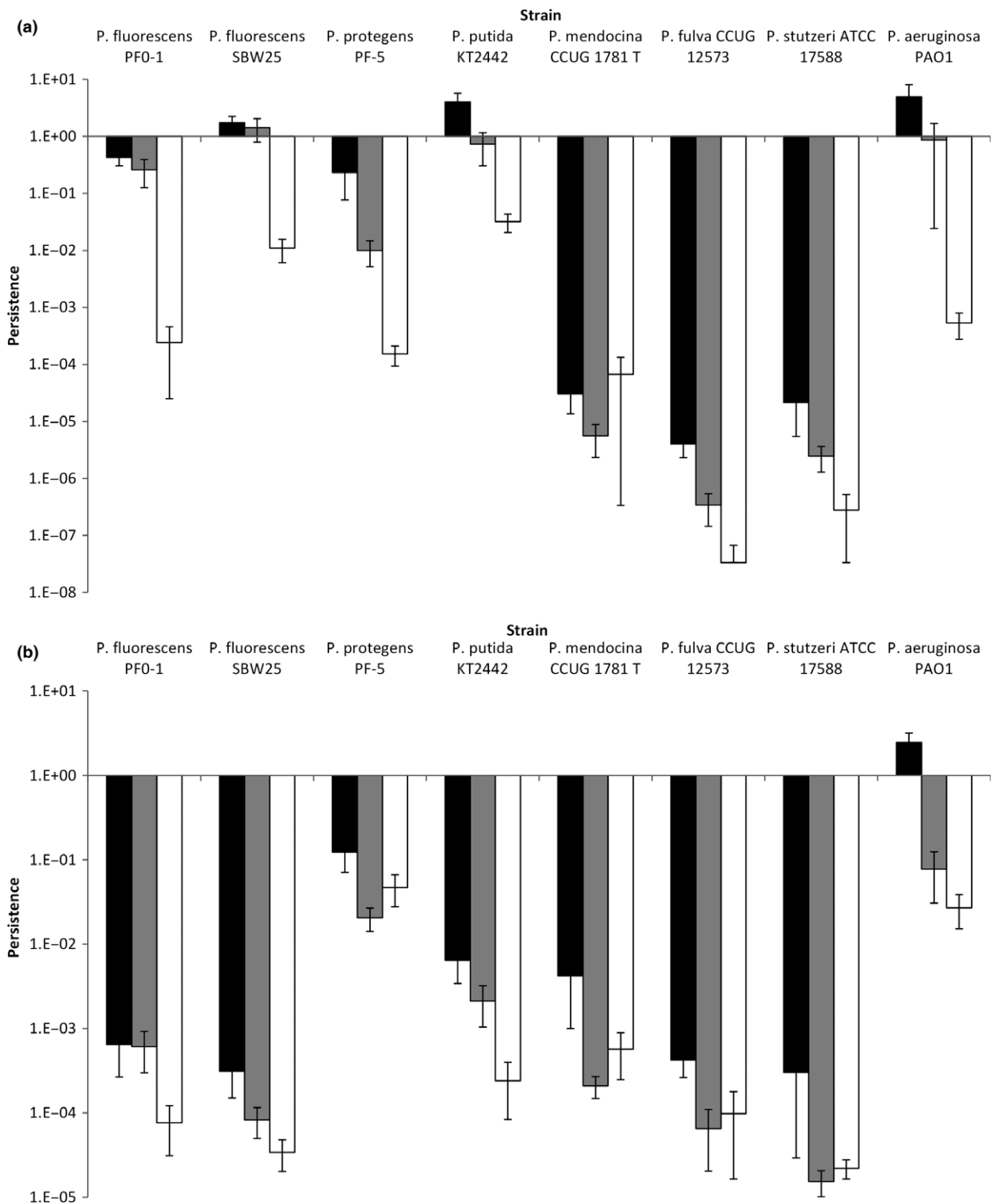


Fig. 3 Persistence varies between strains, antibiotics and doses. Bars represent mean proportion surviving cells (\pm SE) after 4 h exposure to either ciprofloxacin (panel a) or rifampicin (panel b). For panel a, black, grey and white bars represent 60, 120 and 240 ng L⁻¹, respectively. For panel b, black, grey and white bars represent 15, 30 and 60 μ g L⁻¹, respectively.

Table 1 Results of a fully factorial general mixed model on the mean level of persistence across different strains of *Pseudomonas* for the antibiotics rifampicin and ciprofloxacin.

Factor	d.f.	F-statistic	P-value	Proportion variance explained (eta-squared)
Strain	7,239	98.14	> 0.001	46.32
Dose	2,239	75.95	> 0.001	10.24
Antibiotic	1,239	00.94	0.293	00.06
Strain × dose	14,239	01.96	> 0.01	01.85
Strain × antibiotic	7,239	50.29	> 0.001	23.74
Antibiotic × dose	2,239	21.13	> 0.001	02.85
Antibiotic × strain × dose	14,239	01.10	0.208	01.04

the antibiotics ciprofloxacin and rifampicin (Fig. 3). We find that persistence is significantly affected by both the bacterial strain (full statistical results in Table 1; strain: $F_{7,239} = 115.89$, $P < 0.001$) and the dose of the antibiotic (dose: $F_{2,239} = 89.68$, $P < 0.001$), but not directly by the identity antibiotic itself (antibiotic: $F_{1,239} = 1.11$, $P = 0.293$). Specifically, the strain explained 46.3% of the variance in persistence, whereas the dose of antibiotic explained 10.2% of the variance, demonstrating that the majority of variation in persistence is between strains.

As antibiotic dose significantly affected persistence, we repeated the analysis using just persistence at 4× MIC for each strain. Bacterial strain was again found to significantly affect persistence (strain: $F_{7,80} = 13.44$, $P < 0.001$) and explained 36.6% of the variance. At this dose, there was statistically significant variation in persistence between antibiotics (antibiotic: $F_{1,80} = 7.48$, $P < 0.01$), but the strength of this effect was weak, accounting for only 2.9% of the variance in persistence. The interaction of strain and antibiotic, on the other hand, accounted for 28.2% of the variance in persistence (antibiotic by strain interaction: $F_{7,80} = 10.39$, $P < 0.001$). As strain is found to be the strongest predictor of persistence, we therefore define persistence for the rest of this manuscript as the mean antibiotic survival at four times a strain's MIC, averaged across both antibiotics. However, it should be noted that the results of the analysis do not change if a mean across all doses is used, or if persistence at any particular dose is also used.

Persistence and resistance: complimentary or alternative adaptations

To provide a broad measure of antibiotic susceptibility, we first measured the MIC for 24 antibiotics for each strain. We then converted this into a z-score to provide a relative measure of antibiotic resistance. We find that mean antibiotic susceptibility does significantly correlate with mean persistence at 4× MIC (Fig. 4a;

$r = 0.787$, d.f. = 6, $P < 0.05$). This is also true if we limit the measure of antibiotic resistance to just the mean of the two antibiotics used to assay persistence ($r = 0.769$, d.f. = 6, $P < 0.05$), or if we treat the two antibiotics as independent measures of resistance and persistence ($r = 0.594$, d.f. = 14, $P < 0.05$). However, this analysis does not correct for phylogenetic nonindependence, which is the tendency for traits to be similar between closely related strains solely due to phylogenetic history. If not controlled for, traits can be incorrectly concluded to be selected by the same ecological pressures, when in fact they are correlated due to so-called phylogenetic inertia. Therefore, to control for the effects of phylogeny, we repeated the analysis using PICs via the method of Felsenstein. This analysis reveals that mean persistence at 4× MIC and mean resistance are still significantly correlated after correcting for phylogeny (Fig. 4b; $r = 0.731$, d.f. = 6, $P < 0.05$).

To explore the mechanistic basis of variation in persistence, we compared our phenotypic data with the number of TAs in the genomes of our isolates. Although type II TAs are known to play a major role in persister formation, it is unclear to what extent variation in the copy number of type II TAs between isolates can explain variation in persistence. Strikingly, the number of predicted TAs in a genome significantly correlates with the mean level of persistence (Fig. 5a, b; phylogenetically independent correlation: $r = 0.793$, d.f. = 6, $P < 0.05$). In other words, the greater the number of TAs in a genome the higher the mean level of persistence. In contrast, there is no significant relationship between the number of TAs and antimicrobial resistance (Fig. 6a, b; phylogenetically independent correlation: $r = 0.478$, d.f. = 6, $P = 0.231$). In other words, TAs do not appear to contribute to antimicrobial resistance. Therefore, although persistence and resistance are phenotypically correlated, they appear to be mechanistically unrelated.

One feature which may underlie this pattern is variation in genome size, as the isolates used in our system vary by over 2.5 MB in genome size (Özen & Ussery, 2012). It has been previously demonstrated that the number of TAs roughly correlates with genome size (Makarova *et al.*, 2009). We therefore reanalysed the relationship between persistence and resistance using partial correlations to control for the effect of genome size. Partial correlations are a technique whereby the correlation between two variables is tested for whether it could be caused by both variables independently correlating with a third variable. This analysis reveals that the correlation between persistence and resistance is no stronger than would be expected if both are unrelated to each other but both independently correlated with genome size (phylogenetically corrected partial correlation: $r = 0.223$, d.f. = 5, $P = 0.630$). In contrast, the relationship between persistence and the number of TAs is stronger than expected from both being simply

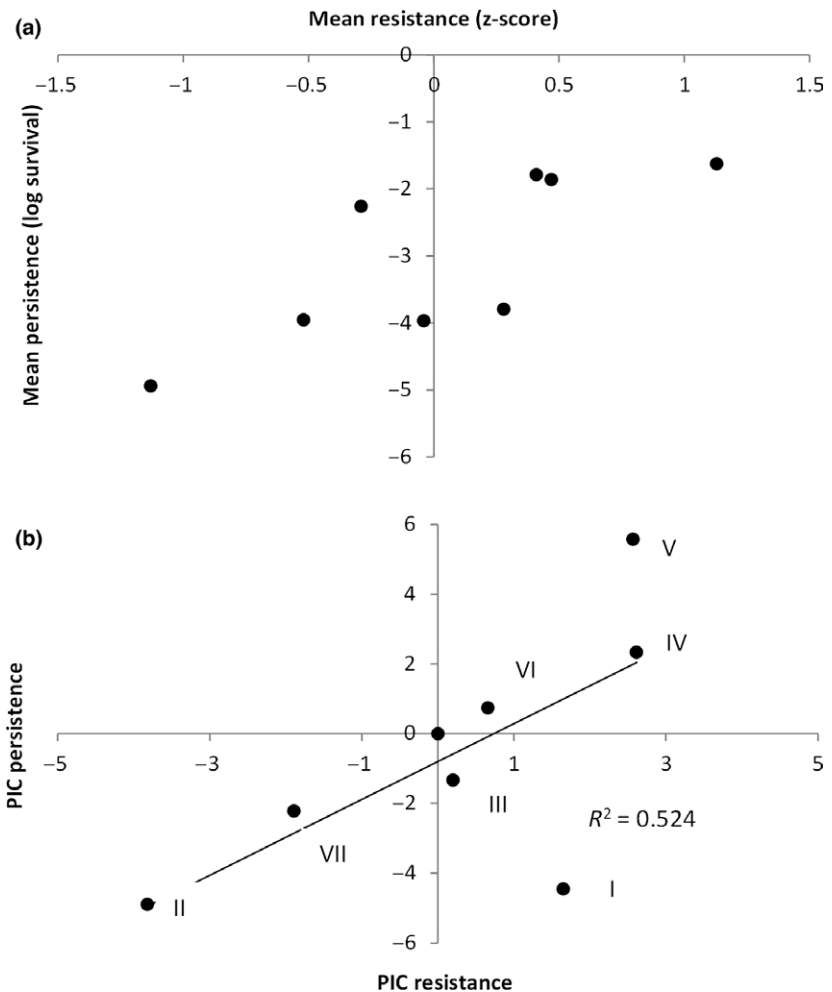


Fig. 4 (a) mean resistance and mean persistence correlate across different strains of *Pseudomonas*. Each point represents a different strain. (b) Resistance and persistence still correlate after correcting for phylogeny. Each point represents a different phylogenetic independent contrast (PIC, numbered as in Fig. 1).

properties of genome size (phylogenetically corrected partial correlation: $r = 0.894$, d.f. = 5, $P < 0.01$). This suggests that the positive correlation between resistance and persistence simply reflects the fact that strains of *Pseudomonas* with large genomes have independently evolved high levels of both persistence and resistance.

Discussion

In this manuscript, we report a phenotypic association between antibiotic susceptibility and bacterial persistence. This suggests that at a broad evolutionary scale, they represent complimentary adaptations to stressful ecological niches. However, as resistance and persistence are known to have different mechanistic causes, we unsurprisingly find that the relationship appears to not be causal. Specifically, we present evidence that the level of persistence of a bacterial strain can be predicted from the number of type II TAs in its genome. Admittedly, this is only from a sample of eight isolates, so requires additional genomewide association studies (GWAS) to be

fully verified. However, with the increasing volumes of genomic data available for pathogenic bacteria, there is increasing interest in predicting bacterial phenotypes from sequence data. So-called GWAS have had some success predicting virulence and antimicrobial resistance (reviewed in Read & Massey, 2014). From our relatively small study, it appears persistence may be predicted from sequence data. This is somewhat surprising when one considers how only a few years ago the molecular basis of persistence was still obscure. Although many genes were known to influence persister formation, they seemed so disparate and general that predicting persistence solely from genomic data would have appeared impossible. However, given the emerging role of TAs in persistence phenotypes, it seems tentatively more promising to relate persistence to sequence data. A caveat to this argument is that persisters are thought to be a universal property of bacteria (Lewis, 2010a, b), whereas TAs are not (Pandey & Gerdes, 2005; Makarova *et al.*, 2009). Aside from whether improved knowledge of TAs will reveal their presence in these genomes, the

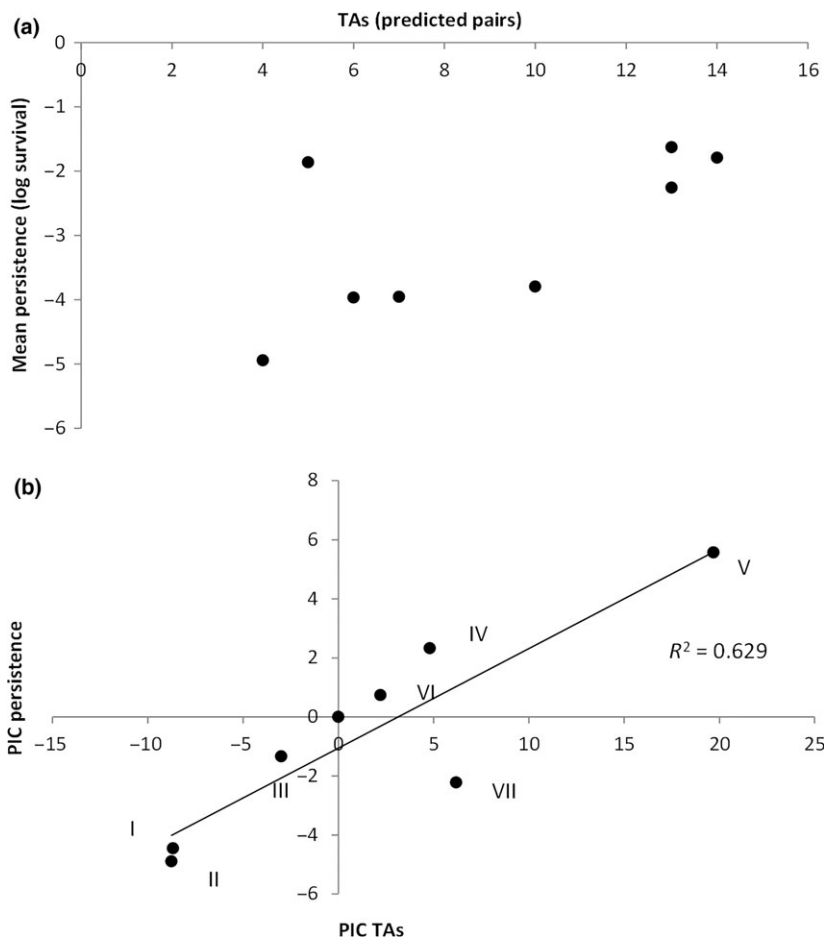


Fig. 5 (a) the number of type II toxin-antitoxin (TAs) pairs predicts the mean level of persistence across strains. Each point represents a separate strain. (b) The number of TAs still significantly correlates with persistence after correcting for phylogeny. Each point represents a different phylogenetic independent contrast (PIC, numbered as in Fig. 1).

predictive power of TAs is limited to strains where TAs are a major mechanism of persister formation.

Across a diverse range of isolates, we find strain to be the best predictor of persistence. Although persistence did significantly differ between antibiotics, this effect was much smaller than the effect of strain. It has been previously demonstrated that persistence varies between genotypes and antibiotics (Stewart & Rozen, 2012; Hofsteenge *et al.*, 2013); however, neither previous work analysed the effect of strain and antibiotic in the same statistical test, which would allow the partitioning of variance between the two factors. Although both papers do show that persistence does not linearly correlate between different antibiotics, this does not preclude strain having the greatest predictive power for persistence. Indeed, in the data presented here although there is no significant correlation in persistence between the two antibiotics, strain is still found to explain a greater proportion of variance than antibiotic. It is important to understand whether persistence is mainly due to particular genotypes or particular antibiotics (or indeed other factors), as it could directly inform clinical antibiotic choices particular with regard to chronic or potentially chronic infections. For

example, if certain antibiotics always yield high fractions of persisters, then this antibiotic should be avoided for the treatment of potentially chronic or recurrent infections. In contrast, if certain genotypes always have higher persister fractions, then greater effort could be made to understand the epidemiology and spread of these lineages.

The study system used here encompasses the entire breadth of a genus, and it is therefore questionable whether our findings can be applied at smaller evolutionary scales. At a within-species scale, there is still considerable variation in both antibiotic susceptibility and persistence (Stewart & Rozen, 2012; Hofsteenge *et al.*, 2013), making a correlation between resistance and persistence at least possible. Previous work has generally focussed on strains within species with the same level of resistance, resulting in a lack of empirical insight on this topic. There is still considerable variation in genome size within a bacterial species (for example Bergthorsson & Ochman, 1998; Thompson *et al.*, 2005; Loper *et al.*, 2012), although admittedly not as much variation as across a genus. However, if similar patterns of genomic content are observed in other taxa as in the *Pseudomonas* genus, then a correlation between persistence and

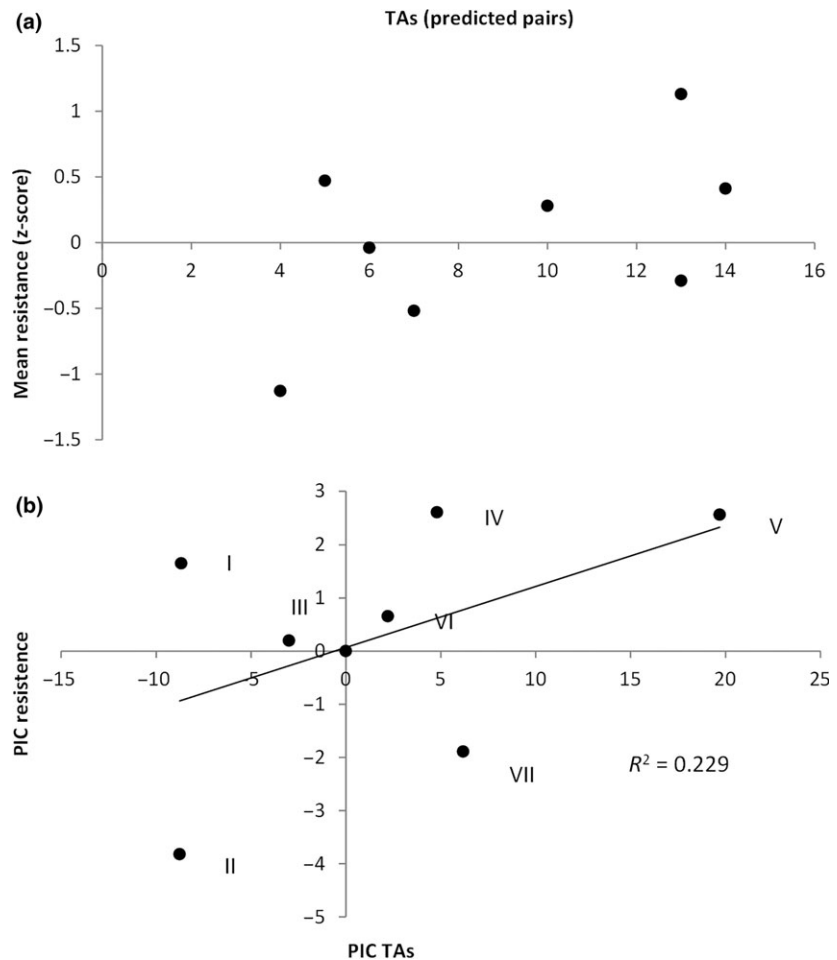


Fig. 6 (a) the number of type II toxin–antitoxin (TAs) pairs has no significant relationship with the mean level of resistance across strains. Each point represents a separate strain. (b) The number of TAs still has no significant relationship with resistance after correcting for phylogeny. Each point represents a different phylogenetic independent contrast (PIC, numbered as in Fig. 1).

resistance is quite likely, if perhaps weaker than found here. It is also interesting to speculate whether the number of TAs will still be predictive of persistence at a smaller phylogenetic scale. Although there is still considerable variation in persistence within a species (Stewart & Rozen, 2012; Hofsteenge *et al.*, 2013), it is still unclear whether there is also variation in TAs per genome at this scale. However, variation in TAs is not the only source of variation in persistence. Although TAs have a key role in persister formation, many other factors can also influence the number of persisters found within a population (Lewis, 2007; Allison *et al.*, 2011; Balaban, 2011; Balaban *et al.*, 2013). Variation in persistence within a species could be a combination of variation of TA number, as well as other factors such as the precise identity of the TAs and also these other cellular systems which influence persister formation.

We find that isolates with greater genome sizes possess higher persistence but also higher resistance. If high levels of both persistence and resistance are found in the same isolate, it raises the question of what if anything limits the evolution of these traits. Crucially, there is growing evidence of trade-offs associated with both per-

sistence and resistance. Although the presence of costs from high-level antibiotic resistance is well established (Melnyk *et al.*, 2015; Vogwill & MacLean, 2015), there is also emerging evidence that higher proportions of persisters are also more costly in terms of growth rate and competitive ability (Stewart & Rozen, 2012; Stepanyan *et al.*, 2015). However, if both traits are costly, and both traits are adaptation to similar selection pressures, it seems surprising that there is not some sort of trade-off or inverse relationship between the two. Therefore, persistence and resistance are perhaps best viewed as adaptations to different properties of the same selection pressure, resulting in the traits being linked but not necessarily driven by the exact same properties of an environment of niche. Or in other words, in an environment which does not require a high level of antibiotic resistance, it also does not require a high level of persistence, but not for precisely the same reason.

In addition to the variation between strains, we found a significant effect of antibiotic dose and significant interactions with antibiotic identity on persistence. Finding that persistence is a highly variable phenotype is consistent with previous work from a range of

systems and illustrates that persister cells do not represent a homogenous phenotype (Allison *et al.*, 2011; Fasani & Savageau, 2013). Instead, the 'persistence' phenotype is actually a diverse composite of many different cellular mechanisms, each of which subtly differs in how it affects cellular growth and survival, with some mechanisms resulting in high recalcitrance to some stresses but less to others. Underlying this is the diversity of TAs within most bacterial genomes, as well as the complex up-stream regulation of TAs. For example, if a genome contains ten TAs, then it has potentially ten distinct mechanisms of persister formation, or more if the differing TAs can work in combinations. Although the molecular basis of most TAs is still unclear, known mechanisms include inhibition of DNA gyrase, degradation of mRNA or inhibition of translation (reviewed in Gerdes *et al.*, 2005). These differing mechanisms may represent physiological states which are tolerant of different types of cellular stress. Additionally, whether these separate routes to persistence represent alternative or synergistic approaches to cellular plasticity remains unclear. Therefore, having multiple TAs may permit differing levels of persistence depending on how many TAs are simultaneously active, as well as their precise molecular mechanism.

Our study system contains isolates predominately drawn from environmental samples, as opposed to clinical samples, although *P. aeruginosa* PAO1 is a clinical specimen from 1955. Therefore, the selection pressures shaping this system are likely to be low-level selection of resistance and tolerance from naturally produced antibiotics and other toxins. Clinical systems will in general exert far greater selection pressures from antibiotic because of the higher concentrations of antibiotics required to treat infections. Furthermore, samples from chronic infections are likely to have been exposed to even greater selection for both resistance and persistence. However, whether within each of these groups persistence and resistance will also be correlated remains to be tested. Perhaps when these traits start to get extremely high, trade-offs start to become more important.

Acknowledgments

The research leading to these results has received funding from the European Research Council under the European Union's Seventh Framework Programme (FP7/2007–2013)/ERC grant agreement no. 281591 and from the Royal Society. VF was supported by an MEC Postdoctoral Fellowship from the Spanish Government (EX-2010-0958).

References

Allison, K.R., Brynildsen, M.P. & Collins, J.J. 2011. Heterogeneous bacterial persisters and engineering approaches to eliminate them. *Curr. Opin. Microbiol.* **14**: 593–598.

- Balaban, N.Q. 2011. Persistence: mechanisms for triggering and enhancing phenotypic variability. *Curr. Opin. Genet. Dev.* **21**: 768–775.
- Balaban, N.Q., Merrin, J., Chait, R., Kowalik, L. & Leibler, S. 2004. Bacterial persistence as a phenotypic switch. *Science* **305**: 1622–1625.
- Balaban, N.Q., Gerdes, K., Lewis, K. & McKinney, J.D. 2013. A problem of persistence: still more questions than answers? *Nat. Rev. Microbiol.* **11**: 587–591.
- Bergthorsson, U. & Ochman, H. 1998. Distribution of chromosome length variation in natural isolates of *Escherichia coli*. *Mol. Biol. Evol.* **15**: 6–16.
- Bigger, J. 1944a. The bactericidal action of penicillin on *Staphylococcus pyogenes*. *Ir. J. Med. Sci.* **19**: 585–595.
- Bigger, J. 1944b. Treatment of staphylococcal infections with penicillin by intermittent sterilisation. *Lancet* **244**: 497–500.
- Blair, J.M.A., Webber, M.A., Baylay, A.J., Ogbolu, D.O. & Piddock, L.J.V. 2015. Molecular mechanisms of antibiotic resistance. *Nat. Rev. Microbiol.* **13**: 42–51.
- Cullen, L. & McClean, S. 2015. Bacterial adaptation during chronic respiratory infections. *Pathogens* **4**: 66–89.
- Dubnau, D. & Losick, R. 2006. Bistability in bacteria. *Mol. Microbiol.* **61**: 564–572.
- Fasani, R.A. & Savageau, M.A. 2013. Molecular mechanisms of multiple toxin–antitoxin systems are coordinated to govern the persister phenotype. *Proc. Natl. Acad. Sci. U.S.A.* **110**: E2528–E2537.
- Fauvart, M., De Groote, V.N. & Michiels, J. 2011. Role of persister cells in chronic infections: clinical relevance and perspectives on anti-persister therapies. *J. Med. Microbiol.* **60**: 699–709.
- Felsenstein, J. 1985. Phylogenies and the comparative method. *Am. Nat.* **125**: 1–15.
- Fridman, O., Goldberg, A., Ronin, I., Shoresh, N. & Balaban, N.Q. 2014. Optimization of lag time underlies antibiotic tolerance in evolved bacterial populations. *Nature* **513**: 418–421.
- Gerdes, K., Christensen, S.K. & Lobner-Olesen, A. 2005. Prokaryotic toxin–antitoxin stress response loci. *Nat. Rev. Microbiol.* **3**: 371–382.
- Graumann, P.L. 2006. Different genetic programmes within identical bacteria under identical conditions: the phenomenon of bistability greatly modifies our view on bacterial populations. *Mol. Microbiol.* **61**: 560–563.
- Helaine, S., Cheverton, A.M., Watson, K.G., Faure, L.M., Matthews, S.A. & Holden, D.W. 2014. Internalization of salmonella by macrophages induces formation of nonreplicating persisters. *Science* **343**: 204–208.
- Hobby, G.L., Meyer, K. & Chaffee, E. 1942. Observations on the mechanism of action of penicillin. *Exp. Biol. Med.* **50**: 281–285.
- Hofsteenge, N., van Nimwegen, E. & Silander, O. 2013. Quantitative analysis of persister fractions suggests different mechanisms of formation among environmental isolates of *E. coli*. *BMC Microbiol.* **13**: 25.
- Hogardt, M. & Heesemann, J. 2013. Microevolution of *Pseudomonas aeruginosa* to a chronic pathogen of the cystic fibrosis lung. In: *Between Pathogenicity and Commensalism*, **358**. (U. Dobrindt, J.H. Hacker, C. Svanborg, eds), pp. 91–118. Springer, Berlin Heidelberg.
- Holden, D.W. 2015. Persisters unmasked. *Science* **347**: 30–32.
- Kint, C.I., Verstraeten, N., Fauvart, M. & Michiels, J. 2012. New-found fundamentals of bacterial persistence. *Trends Microbiol.* **20**: 577–585.

- Kussell, E., Kishony, R., Balaban, N.Q. & Leibler, S. 2005. Bacterial persistence: a model of survival in changing environments. *Genetics* **169**: 1807–1814.
- LaFleur, M.D., Qi, Q. & Lewis, K. 2010. Patients with long-term oral carriage harbor high-persisters mutants of *Candida albicans*. *Antimicrob. Agents Chemother.* **54**: 39–44.
- Lewis, K. 2007. Persister cells, dormancy and infectious disease. *Nat. Rev. Microbiol.* **5**: 48–56.
- Lewis, K. 2008. Multidrug tolerance of biofilms and persister cells. In: *Bacterial Biofilms*, **322**. (T. Romeo, ed), pp. 107–131. Springer, Berlin Heidelberg.
- Lewis, K. 2010a. Persister cells. *Annu. Rev. Microbiol.* **64**: 357–372.
- Lewis, K. 2010b. Persister cells and the paradox of chronic infections. *Microbe* **5**: 429–437.
- Lewis, K. & Hansen, S. 2013. Type II toxin-antitoxin loci, hipBA and persisters. In: *Prokaryotic Toxin-Antitoxins* (K. Gerdes, ed), pp. 189–203. Springer, Berlin Heidelberg.
- Lidstrom, M.E. & Konopka, M.C. 2010. The role of physiological heterogeneity in microbial population behavior. *Nat. Chem. Biol.* **6**: 705–712.
- Loper, J.E., Hassan, K.A., Mavrodi, D.V., Davis, E.W. II, Lim, C.K., Shaffer, B.T. *et al.* 2012. Comparative genomics of plant-associated *Pseudomonas* spp.: insights into diversity and inheritance of traits involved in multitrophic interactions. *PLoS Genet.* **8**: e1002784.
- Maisonneuve, E., Shakespeare, L., Jorgensen, M. & Gerdes, K. 2011. Bacterial persistence by RNA endonucleases. *Proc. Natl. Acad. Sci. U.S.A.* **108**: 13206–13211.
- Maisonneuve, E., Castro-Camargo, M. & Gerdes, K. 2013. (p)ppGpp controls bacterial persistence by stochastic induction of toxin-antitoxin activity. *Cell* **154**: 1140–1150.
- Makarova, K.S., Wolf, Y.I. & Koonin, E.V. 2009. Comprehensive comparative-genomic analysis of Type 2 toxin-antitoxin systems and related mobile stress response systems in prokaryotes. *Biol. Direct* **4**: 19.
- Melnyk, A.H., Wong, A. & Kassen, R. 2015. The fitness costs of antibiotic resistance mutations. *Evol. Appl.* **8**: 273–283.
- Moyed, H.S. & Bertrand, K.P. 1983. hipA, a newly recognized gene of *Escherichia coli* K-12 that affects frequency of persistence after inhibition of murein synthesis. *J. Bacteriol.* **155**: 768–775.
- Mulcahy, L., Burns, J., Lory, S. & Lewis, K. 2010. Emergence of pseudomonas aeruginosa strains producing high levels of persister cells in patients with cystic fibrosis. *J. Bacteriol.* **192**: 6191–6199.
- Özen, A. & Ussery, D. 2012. Defining the *Pseudomonas* genus: where do we draw the line with azotobacter? *Microb. Ecol.* **63**: 239–248.
- Pandey, D.P. & Gerdes, K. 2005. Toxin-antitoxin loci are highly abundant in free-living but lost from host-associated prokaryotes. *Nucleic Acids Res.* **33**: 966–976.
- Philippi, T. & Seger, J. 1989. Hedging one's evolutionary bets, revisited. *Trends Ecol. Evol.* **4**: 41–44.
- Ramage, H.R., Connolly, L.E. & Cox, J.S. 2009. Comprehensive functional analysis of *Mycobacterium tuberculosis* toxin-antitoxin systems: implications for pathogenesis, stress responses, and evolution. *PLoS Genet.* **5**: e1000767.
- Read, T. & Massey, R. 2014. Characterizing the genetic basis of bacterial phenotypes using genome-wide association studies: a new direction for bacteriology. *Genome Med.* **6**: 109.
- Schuster, C.F. & Bertram, R. 2013. Toxin-antitoxin systems are ubiquitous and versatile modulators of prokaryotic cell fate. *FEMS Microbiol. Lett.* **340**: 73–85.
- Slatkin, M. 1974. Hedging one's evolutionary bets. *Nature* **250**: 704–705.
- Smith, T., Wolff, K.A. & Nguyen, L. 2013. Molecular biology of drug resistance in *Mycobacterium tuberculosis*. *Curr. Top. Microbiol. Immunol.* **374**: 53–80.
- Stepanyan, K., Wenseleers, T., Duéñez-Guzmán, E.A., Muratori, F., Van den Bergh, B., Verstraeten, N. *et al.* 2015. Fitness trade-offs explain low levels of persister cells in the opportunistic pathogen *Pseudomonas aeruginosa*. *Mol. Ecol.* **24**: 1572–1583.
- Stewart, B. & Rozen, D. 2012. Genetic variation for antibiotic persistence in *Escherichia coli*. *Evolution* **66**: 933–939.
- Thompson, J.R., Pacocha, S., Pharino, C., Klepac-Ceraj, V., Hunt, D.E., Benoit, J. *et al.* 2005. Genotypic diversity within a natural coastal bacterioplankton population. *Science* **307**: 1311–1313.
- Veening, J.-W., Smits, W.K. & Kuipers, O.P. 2008. Bistability, epigenetics, and bet-hedging in bacteria. *Annu. Rev. Microbiol.* **62**: 193–210.
- Vogwill, T. & MacLean, R.C. 2015. The genetic basis of the fitness costs of antimicrobial resistance: a meta-analysis approach. *Evol. Appl.* **8**: 284–295.
- Vogwill, T., Kojadinovic, M., Furió, V. & MacLean, R.C. 2014. Testing the role of genetic background in parallel evolution using the comparative experimental evolution of antibiotic resistance. *Mol. Biol. Evol.* **31**: 3314–3323.
- Wood, T.K., Knabel, S.J. & Kwan, B.W. 2013. Bacterial persister cell formation and dormancy. *Appl. Environ. Microbiol.* **79**: 7116–7121.

Data deposited at Dryad: doi: 10.5061/dryad.s7j42

Received 15 October 2015; revised 24 January 2016; accepted 9 March 2016