

ECOGRAPHY

Software notes

RangeShifter 2.0: an extended and enhanced platform for modelling spatial eco-evolutionary dynamics and species' responses to environmental changes

Greta Bocedi, Stephen C. F. Palmer, Anne-Kathleen Malchow, Damaris Zurell, Kevin Watts and Justin M. J. Travis

G. Bocedi (<https://orcid.org/0000-0002-9131-6670>) ✉ (greta.bocedi@abdn.ac.uk), S. C. F. Palmer and J. M. J. Travis (<https://orcid.org/0000-0002-5785-4272>), School of Biological Sciences, Univ. of Aberdeen, Aberdeen, UK. – A. Malchow (<https://orcid.org/0000-0003-1446-6365>) and D. Zurell (<https://orcid.org/0000-0002-4628-3558>), Univ. of Potsdam, Inst. of Biochemistry and Biology, Potsdam, Germany; and: Geography Dept, Humboldt-Univ. zu Berlin, Berlin, Germany. – K. Watts, Forest Research, Alice Holt Lodge, Farnham, Surrey, UK, and: Biological and Environmental Sciences, Univ. of Stirling, Stirling, UK.

Ecography

44: 1453–1462, 2021
doi: 10.1111/ecog.05687

Subject Editor: Thiago F. Rangel
Editor-in-Chief: Miguel Araújo
Accepted 1 July 2021

Process-based models are becoming increasingly used tools for understanding how species are likely to respond to environmental changes and to potential management options. RangeShifter is one such modelling platform, which has been used to address a range of questions including identifying effective reintroduction strategies, understanding patterns of range expansion and assessing population viability of species across complex landscapes. Here we introduce a new version, RangeShifter 2.0, which incorporates important new functionality. It is now possible to simulate dynamics over user-specified, temporally changing landscapes. Additionally, we integrated a new genetic module, notably introducing an explicit genetic modelling architecture, which allows for simulation of neutral and adaptive genetic processes. Furthermore, emigration, transfer and settlement traits can now all evolve, allowing for sophisticated simulation of the evolution of dispersal. We illustrate the potential application of RangeShifter 2.0's new functionality by two examples. The first illustrates the range expansion of a virtual species across a dynamically changing UK landscape. The second demonstrates how the software can be used to explore the concept of evolving connectivity in response to land-use modification, by examining how movement rules come under selection over landscapes of different structure and composition. RangeShifter 2.0 is built using object-oriented C++ providing computationally efficient simulation of complex individual-based, eco-evolutionary models. The code has been redeveloped to enable use across operating systems, including on high performance computing clusters, and the Windows graphical user interface has been enhanced. RangeShifter 2.0 will facilitate the development of in-silico assessments of how species will respond to environmental changes and to potential management options for conserving or controlling them. By making the code available open source, we hope to inspire further collaborations and extensions by the ecological community.

Keywords: animal movement, connectivity, distribution modelling, dynamic landscapes, individual-based modelling, population viability, process-based modelling.



www.ecography.org

© 2021 The Authors. Ecography published by John Wiley & Sons Ltd on behalf of Nordic Society Oikos
This is an open access article under the terms of the Creative Commons Attribution License, which permits use, distribution and reproduction in any medium, provided the original work is properly cited.

Background

Faced with an accelerating global biodiversity crisis caused by multiple interacting and often anthropogenic environmental changes (Ceballos et al. 2015, Urban 2015, IPBES 2019), biologists are striving to understand and predict how species will respond, in both ecological and evolutionary terms, to these threats and to management interventions (Urban et al. 2016, Urban 2019). Policy makers, conservation biologists and land managers are relying more and more on such predictions to manage biodiversity on multiple fronts, including protecting threatened species, limiting invasive species and targeting habitat restoration efforts to both enhance in-situ conservation and promoting range shifting (IPBES 2019). Process-based models, also called dynamic or mechanistic models, have become increasingly popular following many calls urging the ecological community to move beyond correlative approaches towards models that explicitly incorporate the key processes underpinning eco-evolutionary responses to environmental changes (Franklin 2010, Huntley et al. 2010, Schurr et al. 2012, Evans et al. 2013, Thuiller et al. 2013, Urban et al. 2016, Cabral et al. 2017, Connolly et al. 2017, Briscoe et al. 2019, Peterson et al. 2019). Several models and platforms are actively being developed (Lurgi et al. 2015, Landguth et al. 2017, Okamoto and Amarasekare 2018, Schumaker and Brookes 2018, Cotto et al. 2020, Kearney and Porter 2020, Visintin et al. 2020), benefits and short-comings scrutinised (Dormann et al. 2012, Singer et al. 2016, Zurell et al. 2016, Fordham et al. 2018, Johnston et al. 2019), and a promising variety of applications is emerging (Synes et al. 2016).

RangeShifter is a process-based model that we initially developed (Bocedi et al. 2014b) in response to the many calls for moving towards integrated dynamic modelling approaches. The main objective was to provide an individual-based, spatially explicit modelling platform that integrated population dynamics with sophisticated dispersal behaviour, and that could be used for a variety of applications, from theory development to in-silico testing of management interventions. Indeed, since its release, RangeShifter has been used in studies addressing a range of issues, including testing the effectiveness of alternative management interventions to improve connectivity and population persistence (Aben et al. 2016, Henry et al. 2017, Bleyhl et al. 2021), facilitating range expansion (Synes et al. 2015, 2020), improving reintroduction success (Heikkinen et al. 2015, Ovenden et al. 2019), investigating range dynamics of invasive (Fraser et al. 2015, Dominguez Almela et al. 2020) and recovering species (Sun et al. 2016) and theoretically investigating how different traits and processes affect rate of range expansion (Bocedi et al. 2014a, Henry et al. 2014, Barros et al. 2016, Santini et al. 2016). RangeShifter has also been coupled with CRAFTY (Murray-Rust et al. 2014), an agent-based model designed to explore the impact of land managers' behaviours on land-use change, showing that, in the example context of predicting interactions between crops and their pollinators in a changing agricultural landscape, models that integrate

ecological processes with land managers' behaviours, together with their interactions and feed-backs, can reveal important dynamics in land use change, which might otherwise be missed (Synes et al. 2019, Willemen et al. 2019).

Here, we present the new RangeShifter 2.0, which, among various additions and improvements, includes two major novelties compared to the original version (RangeShifter 1.0): the option for implementing temporally dynamic landscapes and a module for the explicit modelling of neutral and adaptive genetics (controlling dispersal traits). RangeShifter is written in C++; it has been completely recoded from its original release following object-oriented programming principles and is now open source, thus facilitating wider usage and enhancements by the ecological community. The source code (<<https://github.com/rangeshifter>>) now presents a modular class structure (Supporting information) which facilitates development and integration of new modules. RangeShifter 2.0 can either be used through the original and now improved Windows graphical user interface (GUI) or be compiled to run in batch-mode on Windows or Linux systems (as described here: <<https://github.com/RangeShifter/RangeShifter-batch-code>>). Whether the model is run through the GUI or the batch-mode, each simulation is completely reproducible as an output file is produced which specifies all the parameters and settings. Additionally, we provide a dedicated website (<<https://rangeshifter.github.io/>>) and updated tutorials for learning to use RangeShifter, and a forum page for communication among users. Below we summarise the main RangeShifter features and briefly describe, and illustrate with examples, the two major additions of dynamic landscapes and explicit genetics, while we refer to the RangeShifter 2.0 User Manual (<<https://github.com/RangeShifter/RangeShifter-software-and-documentation>>) for an overview of the full functionality, including the description of smaller changes and new features in ver. 2.0.

Methods and features

RangeShifter 2.0 is an individual-based, spatially explicit and stochastic modelling platform which models single species' spatial population dynamics on gridded landscapes over discrete yearly or seasonal time steps. It represents three main interacting processes: demography, dispersal and evolution. Demographic models can have either non-overlapping generations, or be stage-structured (in which case density dependence can be flexibly applied to fecundity, development and/or survival of each stage); and they can either be asexual (or female only, assuming that females are the only limiting sex for population dynamics) or sexual. Dispersal is modelled in its three main phases (Clobert et al. 2009): emigration (individual leaves the natal habitat), transfer (individual moves through the landscape) and settlement (individual establishes in a new breeding habitat patch). All the three phases can be sex- and/or stage-specific. Emigration can be density-independent or -dependent. The transfer phase is modelled either with a phenomenological dispersal kernel

or through one of two mechanistic movement models (correlated random walk or the stochastic movement simulator, SMS; Palmer et al. 2011). SMS models the dispersal trajectory on a stepwise basis whilst accounting for perceived movement costs (based on similar cost surfaces to the least cost path (Adriaensen et al. 2003) and the individual's perceptual range), and a tendency to follow a correlated path, as determined by the directional persistence and the dispersal bias parameters. The dispersal bias determines the tendency of moving in a straight line away from the natal patch, and is subject to a decay in strength as a function of the accumulated number of steps taken (Supporting information). Finally, the settlement decision can be a plastic response to density or availability of mates or a combination of these. The evolutionary processes are modelled using explicit genetics which can be both neutral and adaptive for dispersal traits.

We summarise and define the main processes, options and parameters in Supporting information. For more information, the RangeShifter 2.0 User Manual (<<https://github.com/RangeShifter/RangeShifter-software-and-documentation>>) provides extensive and detailed documentation on the concepts and methods implemented in the platform, on how to use each of its components, and several tutorials which guide the user through the practical steps needed to use the main features.

Dynamic landscapes

Considering dynamically changing landscapes is crucial for scenario-based simulations (e.g. climate change or land-used change scenarios), for implementing landscape processes through time (e.g. ongoing habitat fragmentation) and for testing dynamic management interventions accounting for time lags from their deployment (e.g. creating a new woodland) to the realization of their full potential (Watts et al. 2020). In RangeShifter 2.0, the landscape may be changed any number of times during a simulation, but always at the start of the year, i.e. prior to reproduction. The changes may comprise any of: alterations to the habitat structure; addition, removal or changes of patches in a patch-based model; and modifications of the cost map when using SMS.

Explicit genetics

A new module is provided to define the genetic architecture of a species in a flexible and explicit way. Individuals may carry one or more chromosomes, to which neutral loci and adaptive loci controlling dispersal traits are mapped. It is possible to model a large number of neutral markers (limited only by the computer's memory), thus allowing tracking of population structure and neutral diversity, as well as simulating spatial genetic patterns emerging from the interaction between demographic and spatial processes, e.g. for in-silico applications of landscape genetics (Manel et al. 2003). The dispersal traits have been extended to cover density-dependent emigration and settlement reaction norms, which may optionally differ between the sexes. Additionally, if SMS is

selected as the movement model in the transfer phase, the parameters controlling directional persistence and the dispersal bias and its decay (Supporting information and the User Manual) can be modelled as evolving traits. Each dispersal or movement trait can be controlled by a separate single chromosome, akin to RangeShifter 1.0 (Bocedi et al. 2014b), or through a highly flexible mapping of traits to chromosomes, which enables the degree of linkage between traits to be controlled and, optionally, pleiotropy to be incorporated, thus allowing for complex genetic architectures underlying evolution of dispersal strategies (Saastamoinen et al. 2018). The whole genome of each individual may be output in a separate file if required, e.g. for the calculation of landscape genetic indices.

Example applications

Effectiveness of woodland creation strategies to facilitate range expansion

We illustrate the application of dynamic landscapes using the example of woodland creation in a real UK landscape introduced by Synes et al. (2015, 2020), who compared the effects of various realistic management scenarios for improving functional connectivity for a range of exemplar virtual woodland species on both species' persistence in existing patches and range expansion ability. They compared persistence and expansion rates under the management scenarios with a baseline rate for the original landscape. However, as the landscape changes were 'instant', i.e. the new habitat was assumed to be immediately fully suitable, the differences they observed could be over-estimated, as newly planted woodland would in reality take many decades to develop into the equivalent of existing woodland in terms of its suitability as breeding habitat for many species (Watts et al. 2020). Rather, newly planted areas might be expected firstly to provide increased structure which might aid movement of woodland species, and then gradually increase in quality as breeding habitat as canopy cover develops.

Here, we assume as in Synes et al. (2015, 2020) that the locations of all new woodlands are allocated immediately and on land previously used as improved grassland or arable, and that planting of saplings occurs instantly in all locations. However, we use the new feature of dynamic landscapes, and assume that rather than instantly becoming mature woodland habitat, planted areas develop gradually over a period of 40 yrs (Table 1, Fig. 1). We compared the dynamic landscape approach with the 'instant' landscape approach on the basis of the two most successful scenarios identified by Synes et al. (2015), namely 'CreateRandom' (new patches created anywhere) and 'CreateSmallAdjacent' (new planting to increase the size of existing patches of under 3 ha), applied to 4% of the landscape. For illustrative purposes we consider one virtual woodland species with simple sexual, stage-structured demography and good dispersal abilities (Bird_D*P*S⁺ in Synes et al. 2015). We modelled dispersal movements

Table 1. Temporal development of newly planted woodland, where $1/b$ is the fecundity density-dependent coefficient (individuals ha^{-1}) (which largely determines the equilibrium density of the population), Cost is the perceived movement cost applied in modelling the transfer phase of dispersal by SMS and Mort is the per-step habitat-specific dispersal mortality probability.

| Years | $1/b$ | Cost | Mort | Description |
|--------|-------|------|-------|--|
| 0–4 | 0 | 100 | 0.05 | <i>Permeable habitat</i> – the planting of new woodland provides enhanced movement potential (with lower movement costs). However, the limited canopy cover has no impact on mortality or breeding potential: <i>treat as similar to semi-improved grassland</i> |
| 5–9 | 0 | 10 | 0.005 | <i>Permeable and safe habitat</i> – as the new woodland develops, it provides increased structural cover for movement and reduced mortality, but it is still too young to provide suitable breeding habitat: <i>treat as dwarf shrub heath</i> |
| 10–19 | 5 | 5 | 0.002 | <i>Low quality breeding habitat</i> – the new woodland starts to provide a degree of reduced quality breeding habitat and settlement starts to occur, but there are still movement costs and a small mortality risk |
| 20–29 | 10 | 2 | 0.001 | <i>Medium quality breeding habitat</i> – movement and mortality risks decrease further as canopy cover develops and breeding quality is enhanced |
| 30–39 | 15 | 1 | 0.0 | <i>High quality breeding habitat</i> – further canopy closure removes movement costs and mortality risk and patch quality moves towards that of established woodland |
| 40–100 | 21 | 1 | 0.0 | <i>Very high quality breeding habitat</i> – optimal high quality woodland habitat is achieved in year 40 as previously Synes et al. (2015) implemented from year 0 |

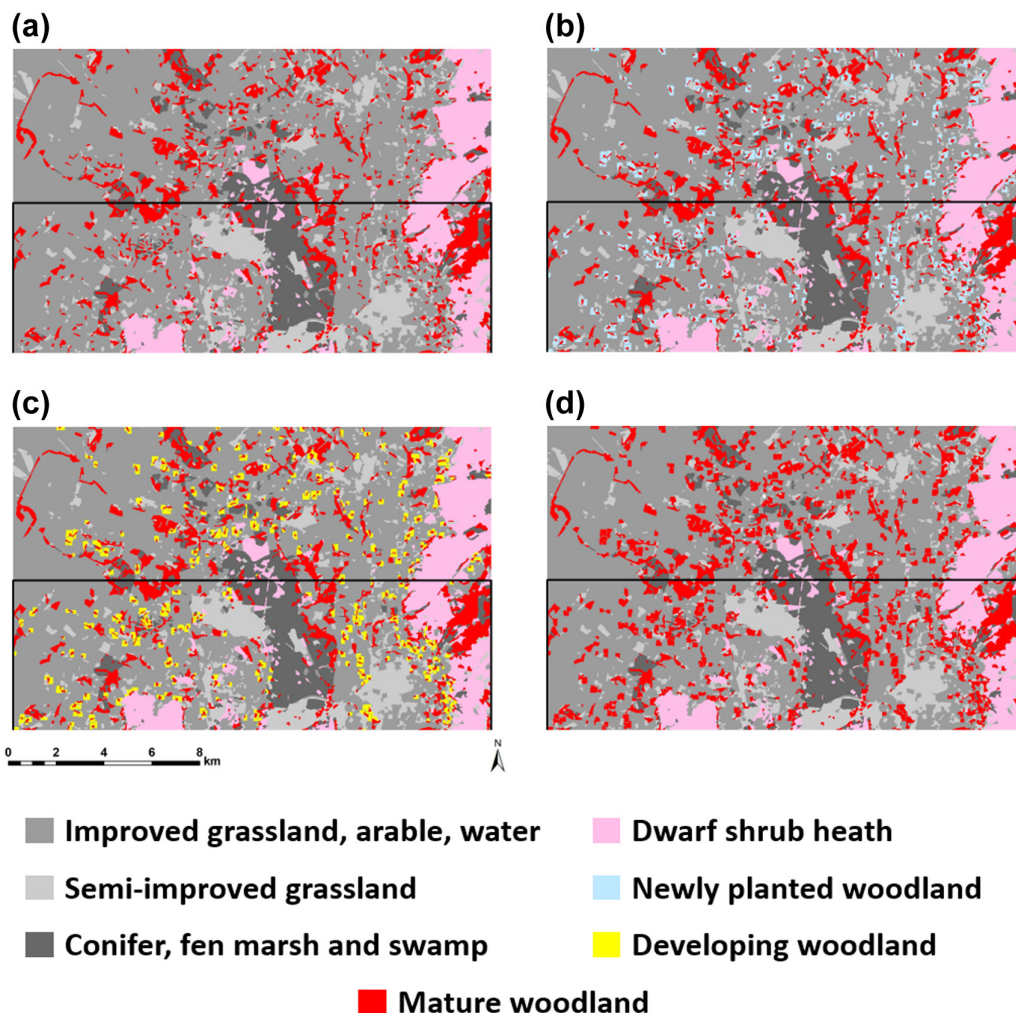


Figure 1. Example of dynamic landscape development: (a) initial landscape, (b) after five years when newly planted woodland adjacent to small patches is treated as dwarf shrub heath for dispersal modelling, (c) after 20 yrs as canopy closure develops, (d) final landscape after 40 yrs when newly planted woodland is fully mature. The black line shows the northern limit of the initial range.

through the landscape with SMS. To ensure that the species was in equilibrium before management commenced, we ran simulations for 50 yrs on the original landscape before applying the first landscape change, and then continued for a further 100 yrs during which range expansion was allowed to occur under the management scenario. Simulations were run on the baseline landscape and on all the 10 replicate landscapes for each scenario generated by Synes et al. (2015), and each simulation was replicated 10 times. All the model parameters and options are reported in the Supporting information. We further provide instructions on how to run this example (Supporting information).

For the instant landscape approach (Synes et al. 2015), the mean rate of range expansion for the CreateRandom scenario was 187 m yr⁻¹ over 100 yrs (standard error SE 2.34 m yr⁻¹), 2.0 times the rate on the baseline landscape. Similarly, for the CreateSmallAdjacent scenario, the mean rate of range expansion was 201 m yr⁻¹ (SE 2.90 m yr⁻¹), 2.1 times faster than the baseline. By applying the dynamic landscape approach to the CreateRandom scenario, the mean rate of range expansion was reduced negligibly to 184 m yr⁻¹ (SE 2.64 m yr⁻¹; relative reduction 1.6%). In contrast, for the CreateSmallAdjacent scenario, the mean rate of range expansion was increased slightly to 216 m yr⁻¹ (SE 2.69 m yr⁻¹; relative increase 7.5%). Despite rather similar total expansion rates over a period of 100 yrs, the temporal trajectories differed considerably between the instant and the dynamic landscape approach, as is illustrated for a single landscape replicate of the CreateSmallAdjacent scenario (Fig. 2). The total population size on the dynamic landscape lagged behind that on the instant landscape by up to 25% during the first 40 yrs after planting (Fig. 2A), and the location of the northern range margin on the dynamic landscape was up to 5 km further south during the succeeding 40 yrs (Fig. 2B).

Evolution of multiple dispersal traits

We illustrate how RangeShifter 2.0 can be used to model evolution of complex dispersal strategies, which involve evolution of multiple traits defining all three phases of dispersal (emigration, transfer through the landscape and settlement in a new habitat patch) on landscapes that differ in their structure and composition. All the model parameters and options are reported in Supporting information. Equations defining reaction norms can be found in the Supporting information. As for the previous example, we provide instructions on how to run this example (Supporting information).

We modelled the evolution of dispersal traits of an annual sexual species on a set of three stylised landscapes of 121 rows × 121 columns differing in the degree to which movement was inhibited by the presence of high-cost cells in the landscape (Fig. 3). Temporally uncorrelated local environmental stochasticity was applied in two forms in order to promote dispersal evolution: as annual variability in carrying capacity (where carrying capacity of each suitable cell varies yearly, and independently from other cells, between 10 and 50 individuals ha⁻¹) and as a small probability of local patch extinction (where populations in each suitable cell have an independent yearly probability of extinction of 0.015). The parameters controlling all three phases of dispersal evolved independently of one another, each trait being determined by a separate autosome having three unlinked loci. Emigration and settlement traits were modelled as sex-dependent, thus having sex-limited phenotypic expression. Emigration probability could evolve density dependence, where the six parameters defining the sex-specific reaction norms to density (three parameters per sex) were modelled as evolving traits (Supporting information). Settlement probability for both sexes could also evolve density dependence, where the

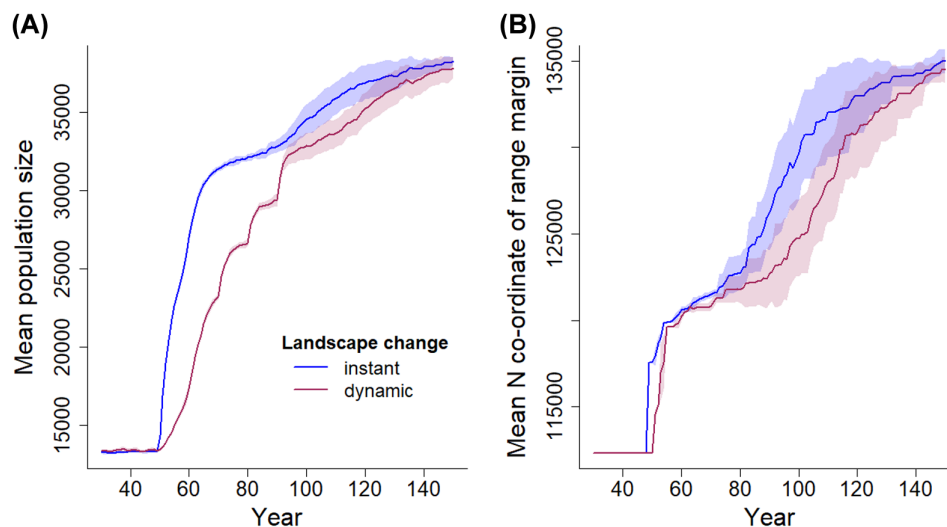


Figure 2. Consideration of dynamic landscape restoration affects predictions on species' range expansion dynamics. (A) Mean total population size and (B) mean location of species' northern range margin for the instant (blue) and dynamic (red) landscape change methods commencing at year 50 for a single landscape replicate of the CreateSmallAdjacent scenario. Shades show 95% confidence intervals from 10 replicates.

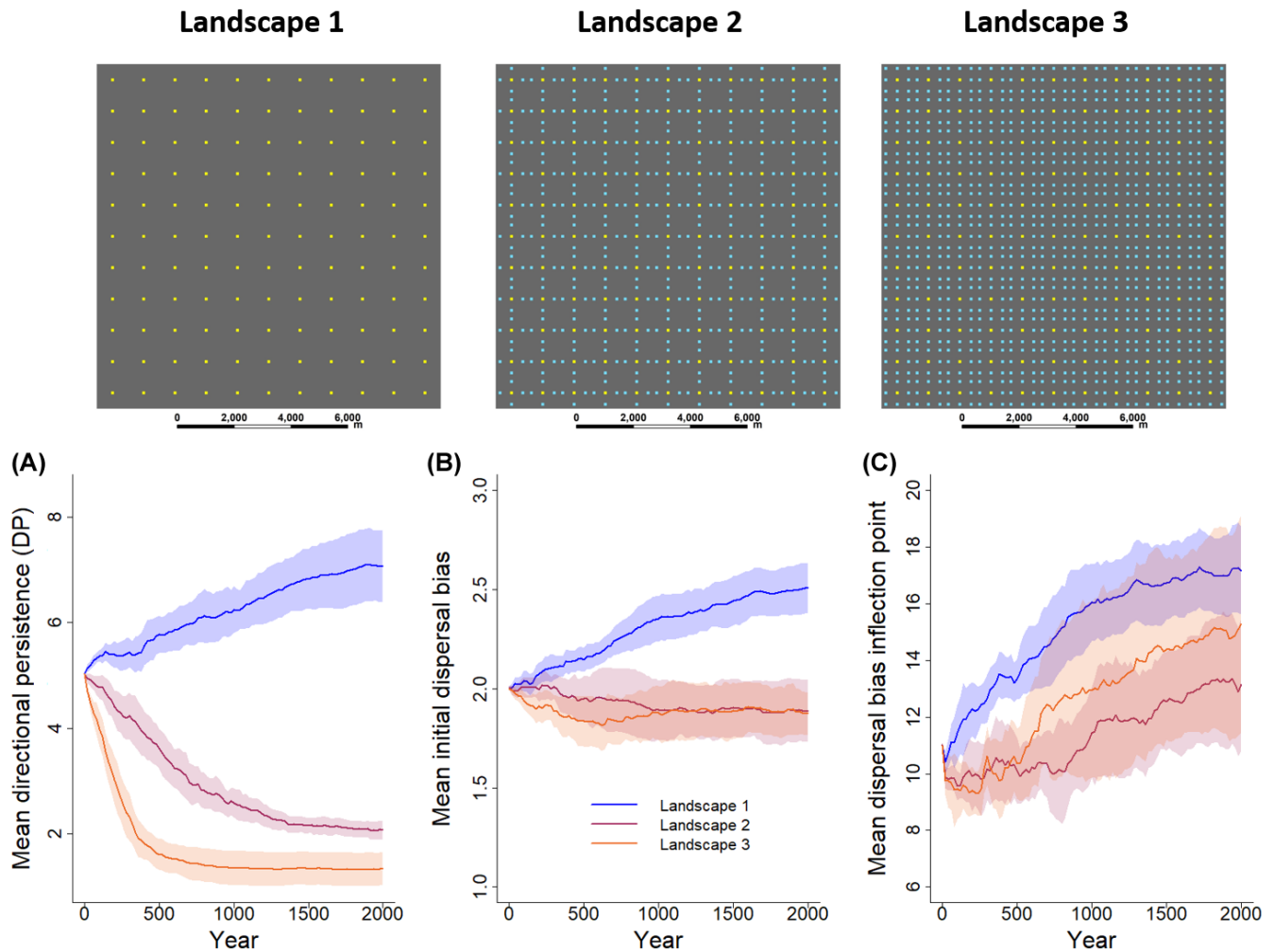


Figure 3. Stylised landscapes used to model evolution of dispersal traits (upper panels). Landscape 1 comprises evenly distributed breeding habitat patches of $100\text{ m} \times 100\text{ m}$ (yellow) set in a homogenous matrix (grey). In Landscape 2 high-cost cells inhibitory to movement (blue) are added orthogonally between the patches. In Landscape 3 additional inhibitory cells are added to the diagonals between patches. (A–C) Evolution of mean transfer traits, directional persistence (A), initial dispersal bias (B) and dispersal bias inflection point (measured in steps taken; C), on the three landscapes. Phenotypic values are averaged over all individuals and 10 replicate simulations.

sex-specific reaction norms were defined by further six evolving traits (Supporting information). Males had the additional fixed settlement condition of requiring the presence of a mate in the patch.

The transfer phase of dispersal was modelled using SMS. The directional persistence (DP) and the parameters defining the decay function of the dispersal bias were modelled as evolving traits, thus allowing for evolution of movement rules (Supporting information). In the baseline Landscape 1 (Fig. 3), there were no inhibitory cells in the matrix (Cost=10; per-step mortality=0.01), and therefore we would expect relatively straight movement to evolve (Zollner and Lima 1999). However, in Landscape 2, it is much less clear what would be the best movement strategy, as the orthogonal paths between patches are inhibited by high-cost cells (Cost=1000; per-step mortality=0.5), whereas the diagonal movements are not. Finally, in Landscape 3, both orthogonal and diagonal paths are impeded, and

dispersal becomes riskier. The species may therefore evolve to disperse less and/or dispersers may evolve strategies to reach a new patch whilst avoiding as much as possible the high-risk inhibitory cells. We ran ten replicate simulations of 2000 yrs on each landscape.

As expected from the spatial configurations, the dispersal strategies that evolved on the three landscapes differed mainly in the parameters related to the transfer phase, hence defining the individuals' movement trajectories (Fig. 3A–C), whereas they evolved similar reaction norms for the emigration and settlement phases (Supporting information). In the absence of inhibitory features in Landscape 1, very straight movement trajectories evolved (Supporting information): both mean DP and mean initial dispersal bias (the tendency to move in a direction away from the natal patch) reached high values of ~ 7.0 and 2.5 respectively after 2000 yrs (Fig. 3A–B), and indeed there was some indication that they were still increasing slightly. In contrast, when orthogonal movement became

inhibited in Landscape 2, much less direct movement evolved (Supporting information), as determined by low mean DP (Fig. 3A). Mean initial dispersal bias initially remained relatively high at around 2.0 (Fig. 3B), but its mean inflection point (the number of steps at which dispersal bias decreases most rapidly) decreased from around 16 steps on Landscape 1 to around 12 steps (Fig. 3C). Thus, dispersers evolved in Landscape 2 would be following a much less straight path sooner after having left the natal patch compared to dispersers evolved in the more benign Landscape 1 (Supporting information), thereby reducing the probability of moving past a suitable (low cost) cell detected within the perceptual range. The addition of inhibitory features to diagonal movement further developed this trend: dispersal bias was little altered, but DP decreased to a very low level of around 1.3 on average (Fig. 3A). Overall, the evolved movement rules translated into longer mean dispersal distances in the most benign landscape (Landscape 1), and to shorter distances in the riskiest (Landscape 3; Supporting information).

Emigration probability generally evolved to be male-biased. Mean male emigration probability decreased as the occurrence of inhibitory cells in the landscape increased (Landscapes 2 and 3) because the cost of dispersal effectively increased (Supporting information). Male-biased emigration would be expected, given the loosely polygynous mating system (i.e. males can mate with multiple females but each female mates only with one male) and the high environmental and demographic stochasticity (Supporting information), which increase between-patch variance in male reproductive success (Henry et al. 2016, Li and Kokko 2019). Density-dependent settlement evolved similarly in the two sexes, so that individuals were likely to settle at the first suitable patch encountered unless it was substantially above carrying capacity (Supporting information).

Software performance

The time taken to run a model in RangeShifter 2.0 can vary hugely, but in general terms it will increase with increasing 1) number of replicates, 2) number of years simulated, 3) size of the landscape (rows \times columns, but excluding 'no-data' regions), 4) number of suitable patches or cells (and hence number of potential local populations), 5) total number of individuals, 6) proportion of individuals dispersing at any one time, and, most importantly, 7) frequency and level of output data (especially individual-level output). A simulation applying a movement model for the transfer phase of dispersal will also usually take longer than an equivalent simulation applying a dispersal kernel, and eco-evolutionary models will generally take longer than ecological models.

The dynamic landscape example took about 63.5 hours on an Intel Xeon E5-2667 CPU 3.2 GHz processor, whereas the dispersal evolution example took only 1.75 hours on an Intel Core i7-8665U CPU 2.11 GHz processor. Although the dispersal evolution example ran for 2000 yrs as opposed to 150 yrs, it comprised only 30 replicates as against 210, and mean population size was only around 2600, whereas the

expanding populations in the dynamic landscape example increased to as much as 42 000 individuals.

Discussion

RangeShifter 2.0 provides enhancements and substantial extensions to the RangeShifter software (Bocedi et al. 2014b) expanding its potential range of applications. The flexible and spatially-explicit demography and dispersal modules can now be combined with a flexible genetically-explicit representation of neutral markers and/or multiple dispersal traits, allowing for diverse applications focussed on combining population genetic processes with ecological and environmental processes (Manel et al. 2003, Epperson et al. 2010) and accounting for evolution of complex and multi-trait dispersal strategies (Cote et al. 2017, Legrand et al. 2017, Saastamoinen et al. 2018). This is further combined with the ability of incorporating dynamic landscapes, enabling applications that explicitly aim to predict species' genetic, ecological and evolutionary responses to ongoing environmental changes. Such applications include in-silico testing of management interventions which need to account for the occurrence of ecological time-lags when targeting and evaluating conservation actions (Watts et al. 2020).

Importantly, and in contrast with the previous release, RangeShifter 2.0 source code is now open source (<<https://github.com/rangeshifter>>), published under the GNU general public license (GPLv3). It is hence free for the wider community to use, modify and share under the terms of GPLv3. The GitHub repository is open to pull requests from third-party researchers, and the development of new custom processes is facilitated by the new object-oriented and modular code structure (Supporting information for a schematic). Furthermore, RangeShifter 2.0 is also the core of the new package RangeShiftR (Malchow et al. 2020), which allows running RangeShifter from the R environment (<www.r-project.org>) while maintaining the high performance of the C++ code, and includes functions assisting with the set-up of the simulations, the parameterisation and output analyses. RangeShiftR, in addition to improving and broadening RangeShifter accessibility, makes it easily available for multiple platforms, has access to R's infrastructure for parallel and cluster computing and offers many opportunities for interoperation with other R packages.

RangeShifter 2.0 additionally comes with an enhanced Windows GUI as freeware. The pre-built executable file is available from <<https://github.com/RangeShifter/RangeShifter-GUI>>. The GUI acts as a wrapper to capture parameters and visualise the simulations in real time. All the parameters and settings captured by the GUI are written to an output file, thus making each simulation completely reproducible. From current users, and from workshops that we are running worldwide, we are able to appreciate the value of the RangeShifter GUI: it is particularly useful for non-modellers to explore eco-evolutionary dynamics and their conservation implications, to recognise data gaps in empirical systems, to

communicate with stakeholders, and for teaching purposes across grades. It also provides an easily accessible and free software for countries with little funding for conservation and research. Further, to improve accessibility, the User Manual has now been translated into Spanish (<<https://github.com/RangeShifter/RangeShifter-software-and-documentation>>).

RangeShifter is in continuous development, and there are key areas for future progress, which we hope, by making it open source and integrating it with R, will be addressed by a common effort to move towards a fully-integrated dynamic platform that includes all the key and necessary processes for predicting species' eco-evolutionary responses to global changes. For example, RangeShifter 2.0 currently remains a single-species model, while inter-specific interactions are often key in determining species' persistence to global changes (Gilman et al. 2010, Norberg et al. 2012, Urban et al. 2012, 2019, Bocedi et al. 2013, Svenning et al. 2014, Thompson and Fronhofer 2019). Although we made a first important step in including explicit genetics, and we are actively prioritising this area of development, RangeShifter 2.0 does not yet include the level of sophistication that characterises much forward-time population genetic software (Guillaume and Rougemont 2006, Haller and Messer 2019), in terms of genetic processes, structures and outputs, and adaptive traits. For example, the possibility of modelling adaptation to multiple environmental variables will be a crucial addition. However, RangeShifter 2.0 holds an advantage in terms of the ecological, demographic and dispersal complexity it can represent, which, combined with explicit genetics, opens possibilities for sophisticated landscape genetics applications and for fully accounting for evolution of dispersal behaviours (not just emigration rates) which are likely to be critical for species' inhabiting or moving through complex, human-modified landscapes.

To cite RangeShifter 2.0 or acknowledge its use, cite this Software note as follows, substituting the version of the application that you used for 'version 1.0':

Bocedi, G. et al. 2021. RangeShifter 2.0: an extended and enhanced platform for modelling spatial eco-evolutionary dynamics and species' responses to environmental changes. – *Ecography* 44: 1453–1462 (ver. 2.0.1).

Acknowledgements – We thank R. L. Allgayer, A. Ponchon and N. W. Synes for their help and contribution to the RangeShifter development and application. We also thank the many users of RangeShifter and participants to workshops for their invaluable feedback.

Funding – Development of RangeShifter 2.0 was supported by the project PROBIS funded by the BiodivERsA European Joint Call 2012–2013. GB was supported by a Royal Society University Research Fellowship (UF160614). AKM and DZ were supported by Deutsche Forschungsgemeinschaft (DFG) under grant agreement no. ZU 361/1-1.

Conflict of interest – We declare no conflict of interest.

Author contributions

Greta Bocedi: Conceptualization (lead); Investigation (lead); Methodology (lead); Software (lead); Visualization

(lead); Writing – original draft (lead); Writing – review and editing (lead). **Stephen C. F. Palmer:** Conceptualization (equal); Formal analysis (lead); Investigation (equal); Methodology (equal); Software (equal); Validation (lead); Visualization (supporting); Writing – original draft (equal); Writing – review and editing (equal). **Anne-Kathleen Malchow:** Investigation (supporting); Software (supporting); Validation (supporting); Visualization (supporting); Writing – review and editing (equal). **Damaris Zurell:** Investigation (supporting); Software (supporting); Writing – review and editing (equal). **Kevin Watts:** Investigation (supporting); Visualization (supporting); Writing – review and editing (equal). **Justin M. J. Travis:** Conceptualization (equal); Funding acquisition (lead); Investigation (equal); Methodology (supporting); Project administration (lead); Software (supporting); Writing – original draft (equal); Writing – review and editing (equal).

Data availability statement

RangeShifter C++ core code for the batch implementation is open source under the GNU general public license (GPLv3). The code, as well as the compiled Windows package, the User Manual and the data for the tutorials are available from GitHub <<https://github.com/RangeShifter>>.

References

- Aben, J. et al. 2016. The importance of realistic dispersal models in conservation planning: application of a novel modelling platform to evaluate management scenarios in an Afrotropical biodiversity hotspot. – *J. Appl. Ecol.* 53: 1055–1065.
- Adriaensens, F. et al. 2003. The application of 'least-cost' modelling as a functional landscape model. – *Landscape Urban Plan.* 64: 233–247.
- Barros, C. et al. 2016. Spread rates on fragmented landscapes: the interacting roles of demography, dispersal and habitat availability. – *Divers. Distrib.* 22: 1266–1275.
- Bleyhl, B. et al. 2021. Reducing persecution is more effective for restoring large carnivores than restoring their prey. – *Ecol. Appl.* 31: e2338.
- Bocedi, G. et al. 2013. Effects of local adaptation and interspecific competition on species' responses to climate change. – *Ann. N. Y. Acad. Sci.* 1297: 83–97.
- Bocedi, G. et al. 2014a. Mechanistic modelling of animal dispersal offers new insights into range expansion dynamics across fragmented landscapes. – *Ecography* 37: 1240–1253.
- Bocedi, G. et al. 2014b. RangeShifter: a platform for modelling spatial eco-evolutionary dynamics and species' responses to environmental changes. – *Methods Ecol. Evol.* 5: 388–396.
- Briscoe, N. J. et al. 2019. Forecasting species range dynamics with process-explicit models: matching methods to applications. – *Ecol. Lett.* 22: 1940–1956.
- Cabral, J. S. et al. 2017. Mechanistic simulation models in macroecology and biogeography: state-of-art and prospects. – *Ecography* 40: 267–280.
- Ceballos, G. et al. 2015. Accelerated modern human-induced species losses: entering the sixth mass extinction. – *Sci. Adv.* 1: e1400253.

- Clobert, J. et al. 2009. Informed dispersal, heterogeneity in animal dispersal syndromes and the dynamics of spatially structured populations. – *Ecol. Lett.* 12: 197–209.
- Connolly, S. R. et al. 2017. Process, mechanism and modeling in macroecology. – *Trends Ecol. Evol.* 32: 835–844.
- Cote, J. et al. 2017. Evolution of dispersal strategies and dispersal syndromes in fragmented landscapes. – *Ecography* 40: 56–73.
- Cotto, O. et al. 2020. Nemo-age: spatially explicit simulations of eco-evolutionary dynamics in stage-structured populations under changing environments. – *Methods Ecol. Evol.* 11: 1227–1236.
- Dominguez Almela, V. et al. 2020. Integrating an individual-based model with approximate Bayesian computation to predict the invasion of a freshwater fish provides insights into dispersal and range expansion dynamics. – *Biol. Invas.* 22: 1461–1480.
- Dormann, C. F. et al. 2012. Correlation and process in species distribution models: bridging a dichotomy. – *J. Biogeogr.* 39: 2119–2131.
- Epperson, B. K. et al. 2010. Utility of computer simulations in landscape genetics. – *Mol. Ecol.* 19: 3549–64.
- Evans, M. R. et al. 2013. Predictive systems ecology. – *Proc. R. Soc. B* 280: 20131452.
- Fordham, D. A. et al. 2018. How complex should models be? Comparing correlative and mechanistic range dynamics models. – *Global Change Biol.* 24: 1357–1370.
- Franklin, J. 2010. Moving beyond static species distribution models in support of conservation biogeography. – *Divers. Distrib.* 16: 321–330.
- Fraser, E. J. et al. 2015. Range expansion of an invasive species through a heterogeneous landscape – the case of American mink in Scotland. – *Divers. Distrib.* 21: 888–900.
- Gilman, S. E. et al. 2010. A framework for community interactions under climate change. – *Trends Ecol. Evol.* 25: 325–31.
- Guillaume, F. and Rougemont, J. 2006. Nemo: an evolutionary and population genetics programming framework. – *Bioinformatics* 22: 2556–2557.
- Haller, B. C. and Messer, P. W. 2019. SLiM 3: forward genetic simulations beyond the Wright–Fisher model. – *Mol. Biol. Evol.* 36: 632–637.
- Heikkinen, R. K. et al. 2015. Modelling potential success of conservation translocations of a specialist grassland butterfly. – *Biol. Conserv.* 192: 200–206.
- Henry, R. C. et al. 2014. Inter-annual variability influences the eco-evolutionary dynamics of range-shifting. – *PeerJ* 1: e228.
- Henry, R. C. et al. 2016. The evolution of male-biased dispersal under the joint selective forces of inbreeding load and demographic and environmental stochasticity. – *Am. Nat.* 188: 423–433.
- Henry, R. C. et al. 2017. Tree loss impacts on ecological connectivity: developing models for assessment. – *Ecol. Inform.* 42: 90–99.
- Huntley, B. et al. 2010. Beyond bioclimatic envelopes: dynamic species' range and abundance modelling in the context of climatic change. – *Ecography* 33: 621–626.
- IPBES 2019. Global assessment report on biodiversity and ecosystem services of the Intergovernmental Science-Policy Platform on Biodiversity and Ecosystem Services. – IPES secretariat, Bonn, Germany, 1148 pp., <<https://doi.org/10.5281/zenodo.3831673>>.
- Johnston, A. S. A. et al. 2019. Predicting population responses to environmental change from individual-level mechanisms: towards a standardized mechanistic approach. – *Proc. R. Soc. B* 286: 20191916.
- Kearney, M. R. and Porter, W. P. 2020. NicheMapR – an R package for biophysical modelling: the ectotherm and dynamic energy budget models. – *Ecography* 43: 85–96.
- Landguth, E. L. et al. 2017. CDMetaPOP: an individual-based, eco-evolutionary model for spatially explicit simulation of landscape demogenetics. – *Methods Ecol. Evol.* 8: 4–11.
- Legrand, D. et al. 2017. Eco-evolutionary dynamics in fragmented landscapes. – *Ecography* 40: 9–25.
- Li, X. Y. and Kokko, H. 2019. Sex-biased dispersal: a review of the theory. – *Biol. Rev.* 94: 721–736.
- Lurgi, M. et al. 2015. Modelling range dynamics under global change: which framework and why? – *Methods Ecol. Evol.* 6: 247–256.
- Malchow, A.-K. et al. 2021. RangeShiftR: an R package for individual-based simulation of spatial eco-evolutionary dynamics and species' responses to environmental change. – *Ecography*, doi: 10.1111/ecog.05689.
- Manel, S. et al. 2003. Landscape genetics: combining landscape ecology and population genetics. – *Trends Ecol. Evol.* 18: 189–197.
- Murray-Rust, D. et al. 2014. Combining agent functional types, capitals and services to model land use dynamics. – *Environ. Model. Softw.* 59: 187–201.
- Norberg, J. et al. 2012. Eco-evolutionary responses of biodiversity to climate change. – *Nat. Clim. Change* 2: 747–751.
- Okamoto, K. W. and Amarasekare, P. 2018. A framework for high-throughput eco-evolutionary simulations integrating multilocus forward-time population genetics and community ecology. – *Methods Ecol. Evol.* 9: 525–534.
- Ovenden, T. S. et al. 2019. Improving reintroduction success in large carnivores through individual-based modelling: how to reintroduce Eurasian lynx *Lynx lynx* to Scotland. – *Biol. Conserv.* 234: 140–153.
- Palmer, S. C. F. et al. 2011. Introducing a 'stochastic movement simulator' for estimating habitat connectivity. – *Methods Ecol. Evol.* 2: 258–268.
- Peterson, M. L. et al. 2019. Incorporating local adaptation into forecasts of species' distribution and abundance under climate change. – *Global Change Biol.* 25: 775–793.
- Saastamoinen, M. et al. 2018. Genetics of dispersal. – *Biol. Rev.* 93: 574–599.
- Santini, L. et al. 2016. A trait-based approach for predicting species responses to environmental change from sparse data: how well might terrestrial mammals track climate change? – *Global Change Biol.* 22: 2415–2424.
- Schumaker, N. H. and Brookes, A. 2018. HexSim: a modeling environment for ecology and conservation. – *Landscape Ecol.* 33: 197–211.
- Schurr, F. M. et al. 2012. How to understand species' niches and range dynamics: a demographic research agenda for biogeography. – *J. Biogeogr.* 39: 2146–2162.
- Singer, A. et al. 2016. Community dynamics under environmental change: how can next generation mechanistic models improve projections of species distributions? – *Ecol. Model.* 326: 63–74.
- Sun, Y. et al. 2016. Predicting and understanding spatio-temporal dynamics of species recovery: implications for Asian crested ibis *Nipponia nippon* conservation in China. – *Divers. Distrib.* 22: 893–904.
- Svenning, J.-C. et al. 2014. The influence of interspecific interactions on species range expansion rates. – *Ecography* 37: 1198–1209.
- Synes, N. W. et al. 2015. A multi-species modelling approach to examine the impact of alternative climate change adaptation

- strategies on range shifting ability in a fragmented landscape. – *Ecol. Inform.* 30: 222–229.
- Synes, N. W. et al. 2016. Emerging opportunities for landscape ecological modelling. – *Curr. Landscape Ecol. Rep.* 1: 146–167.
- Synes, N. W. et al. 2019. Coupled land use and ecological models reveal emergence and feedbacks in socio-ecological systems. – *Ecography* 42: 814–825.
- Synes, N. W. et al. 2020. Prioritising conservation actions for biodiversity: lessening the impact from habitat fragmentation and climate change. – *Biol. Conserv.* 252: 108819.
- Thompson, P. L. and Fronhofer, E. A. 2019. The conflict between adaptation and dispersal for maintaining biodiversity in changing environments. – *Proc. Natl Acad. Sci. USA* 116: 21061–21067.
- Thuiller, W. et al. 2013. A road map for integrating eco-evolutionary processes into biodiversity models. – *Ecol. Lett.* 16: 94–105.
- Urban, M. C. 2015. Accelerating extinction risk from climate change. – *Science* 348: 571–573.
- Urban, M. C. 2019. Projecting biological impacts from climate change like a climate scientist. – *WIREs Clim. Change* 10: e585.
- Urban, M. C. et al. 2012. A crucial step toward realism: responses to climate change from an evolving metacommunity perspective. – *Evol. Appl.* 5: 154–167.
- Urban, M. C. et al. 2016. Improving the forecast for biodiversity under climate change. – *Science* 353: aad8466.
- Urban, M. C. et al. 2019. Maladapted prey subsidize predators and facilitate range expansion. – *Am. Nat.* 194: 590–612.
- Visintin, C. et al. 2020. steps: software for spatially and temporally explicit population simulations. – *Methods Ecol. Evol.* 11: 596–603.
- Watts, K. et al. 2020. Ecological time lags and the journey towards conservation success. – *Nat. Ecol. Evol.* 4: 304–311.
- Willemsen, L. et al. 2019. Modelling how people and nature are intertwined. – *Ecography* 42: 1874–1876.
- Zollner, P. and Lima, S. 1999. Search strategies for landscape-level interpatch movements. – *Ecology* 80: 1019–1030.
- Zurell, D. et al. 2016. Benchmarking novel approaches for modeling species range dynamics. – *Global Change Biol.* 22: 2651–2664.