

# Geophysical Research Letters<sup>®</sup>



## RESEARCH LETTER

10.1029/2021GL096117

### Key Points:

- Shear wave model of Sabah, northern Borneo generated using the two-plane-wave method
- Crustal thickness and depth to the lithosphere-asthenosphere boundary indicates back-arc spreading behind the Celebes Sea slab
- In the south-east corner, the lithosphere has been removed below a region of recent volcanism, possibly due a Raleigh-Taylor instability

### Supporting Information:

Supporting Information may be found in the online version of this article.

### Correspondence to:

T. Greenfield,  
[tg286@cam.ac.uk](mailto:tg286@cam.ac.uk)

### Citation:

Greenfield, T., Gilligan, A., Pilia, S., Cornwell, D. G., Tongkul, F., Widiyantoro, S., & Rawlinson, N. (2022). Post-subduction tectonics of Sabah, northern Borneo, inferred from surface wave tomography. *Geophysical Research Letters*, 49, e2021GL096117. <https://doi.org/10.1029/2021GL096117>

Received 14 SEP 2021

Accepted 16 JAN 2022

### Author Contributions:

**Conceptualization:** Tim Greenfield, Nicholas Rawlinson  
**Formal analysis:** Tim Greenfield  
**Funding acquisition:** Tim Greenfield, Felix Tongkul, Sri Widiyantoro, Nicholas Rawlinson  
**Investigation:** Tim Greenfield  
**Methodology:** Tim Greenfield  
**Project Administration:** Felix Tongkul, Nicholas Rawlinson  
**Resources:** Amy Gilligan  
**Software:** Tim Greenfield  
**Validation:** Tim Greenfield  
**Visualization:** Tim Greenfield

© 2022. The Authors.

This is an open access article under the terms of the [Creative Commons Attribution License](https://creativecommons.org/licenses/by/4.0/), which permits use, distribution and reproduction in any medium, provided the original work is properly cited.

## Post-Subduction Tectonics of Sabah, Northern Borneo, Inferred From Surface Wave Tomography

Tim Greenfield<sup>1</sup> , Amy Gilligan<sup>2</sup> , Simone Pilia<sup>1</sup> , David G. Cornwell<sup>2</sup> , Felix Tongkul<sup>3</sup>, Sri Widiyantoro<sup>4,5</sup> , and Nicholas Rawlinson<sup>1</sup> 

<sup>1</sup>Bullard Laboratories, University of Cambridge, Cambridge, UK, <sup>2</sup>Department of Geology and Geophysics, School of Geosciences, University of Aberdeen, King's College, Aberdeen, UK, <sup>3</sup>Faculty of Science and Natural Resources, University Malaysia Sabah, Kota Kinabalu, Malaysia, <sup>4</sup>Institute of Technology Bandung, Bandung, Indonesia, <sup>5</sup>Marantha Christian University, Bandung, Indonesia

**Abstract** We use two-plane-wave tomography with a dense network of seismic stations across Sabah, northern Borneo, to image the shear wave velocity structure of the crust and upper mantle. Our model is used to estimate crustal thickness and the depth of the lithosphere-asthenosphere boundary (LAB) beneath the region. Calculated crustal thickness ranges between 25 and 55 km and suggests extension in a NW-SE direction, presumably due to back-arc processes associated with subduction of the Celebes Sea. We estimate the  $\beta$ -factor to be 1.3–2, well below the initiation of seafloor spreading. The LAB is, on average, at a depth of 100 km, which is inconsistent with models that ascribe Neogene uplift to wholesale removal of the mantle lithosphere. Instead, beneath a region of Plio-Pleistocene volcanism in the southeast, we image a region 50–100 km across where the lithosphere has thinned to <50 km, supporting recent suggestions of lower lithospheric removal through a Rayleigh-Taylor instability.

**Plain Language Summary** Understanding the tectonic processes, which have occurred after subduction has ended, is difficult because: (a) few well-preserved, recent examples exist on the Earth, and (b) relatively few geophysical images have been made. This study calculates the shear wave velocity ( $V_{sv}$ ) of the Earth beneath Sabah, in northern Borneo, using teleseismically detected earthquakes. We use these images of the  $V_{sv}$  to infer that extension dominates the geological history. In addition, we image a region where the lithosphere has dropped off. This correlates with a region of recent volcanism; presumably because of the upwelling hot rock induces melting of the mantle.

## 1. Introduction

Sabah, the northernmost part of the island of Borneo (Figure 1) sits near the center of an extensive region of deformation between the Indo-Australian, Pacific, and Eurasian plates. In contrast with other islands across the archipelago, it is not particularly seismically active (ISC, 2021) and deformation rates are low (Mustafar et al., 2017; Simons et al., 2007). However, high mountains, fold-and-thrust belts, ophiolites (Lim, 1985), recent volcanism (Macpherson et al., 2010), and lower lithosphere removal (Pilia et al., 2021) hint at a complex history of subduction, collision, extension, orogen collapse, and uplift through the Neogene (23–2.5 Ma).

Pre-Neogene, Sabah is likely to have been below sea level, as indicated by Paleogene turbidites that are present across much of Sabah (Hall, 2013; Tongkul, 1995). Uplift of these formations occurred in the Early Miocene and were associated with termination of proto-South China Sea subduction and collision of the extended continental crust forming the Dangerous Grounds block (Hall, 2013). This collision is likely to have uplifted the proto-Crocker Range and caused a regional unconformity; but deposition of thick fluvio-marine sediments in central Sabah through the middle and late Miocene (forming the so-called “circular basins,” e.g., Maliau Basin, Figure 1) suggests that widespread uplift of the whole of Sabah did not occur at this time. Indeed, Sabah did not fully emerge until the end of the late Miocene (Morley & Back, 2008; Tongkul & Chang, 2003).

The cause of Sabah's second phase of uplift during the late Miocene/early Pliocene remains a topic of debate. Early models of compression driven by the continued subduction of the Dangerous Grounds block (Simons et al., 2007; Tongkul, 1991) have been largely discounted due to a lack of geophysical evidence. Other models (Cullen, 2010; Morley & Back, 2008; Simons et al., 2007) focus on local or far-field compressive forces to drive deformation and uplift through the Neogene. More recently, two other models for uplift were proposed.

**Writing – original draft:** Tim Greenfield  
**Writing – review & editing:** Tim Greenfield, Amy Gilligan, Simone Pilia, David G. Cornwell, Sri Widiyantoro, Nicholas Rawlinson

Hall (2013) advocated the Celebes Sea (CS) slab breaking-off and/or lithospheric delamination beneath Mt. Kinabalu as causing uplift. An alternative model focused on results from global tomography, inversion of river profiles, and Neogene magmatism over much of Borneo (Roberts et al., 2018). The authors concluded that much of the uplift through the Neogene could be attributed to the emplacement of a hot asthenosphere layer and subsequent melting and intrusion.

A common feature of all these models is that they rely on field observations of surface features, but deeper, geophysical images of the subsurface, especially of the thicknesses of the crust and lithosphere is lacking. In this study, we address this issue by using a dense network of seismic stations deployed across Sabah to construct a shear wave velocity ( $V_{sv}$ ) model using two-plane-wave tomography. We show that lithospheric thinning has occurred, consistent with extension across north and central Sabah, yet the presence of mantle lithosphere is still present beneath much of Sabah, which cannot be reconciled with the idea of wholesale replacement by hot asthenosphere. Instead, we image a localized region where the lithosphere appears to have been removed beneath the youngest volcanic province.

## 2. Data Set

We use seismic waveforms recorded by the nBOSS array in Sabah (network YC, Figure 1; Rawlinson, 2018) as our base data set. This is supplemented by stations from the permanent network of seismometers operated by the Malaysian Meteorological Service (network MY, Figure 1) and two stations in Kalimantan (network 9G, Figure 1; Greenfield et al., 2018). In total, there are 72 instruments, which recorded high-quality waveforms from 2018 to 2020, with an average station spacing of  $\sim 35$  km. All the instruments are broadband seismometers but vary in their corner period from 120 to 30 s.

For subsequent surface wave modeling, we exploit a good azimuth coverage of earthquakes that have an epicentral distance between  $30^\circ$  and  $150^\circ$ , a depth  $< 200$  km and a magnitude  $> 5.7$  (Forsyth & Li, 2005; Harmon & Rychert, 2016; Figures S11 and S12 in Supporting Information S1). The instrument response is removed before using frequency-time analysis with phase-matched filtering (Goforth & Herrin, 1979; Landisman & Dziewonki, 1969) to isolate the Rayleigh Wave fundamental mode on the vertical component. At each period of interest, we measure the phase and amplitude of the Fourier transformed wave. For each measurement, we require a signal-to-noise ratio of at least 10 and observations to be made by at least eight stations (Forsyth & Li, 2005; Harmon & Rychert, 2016).

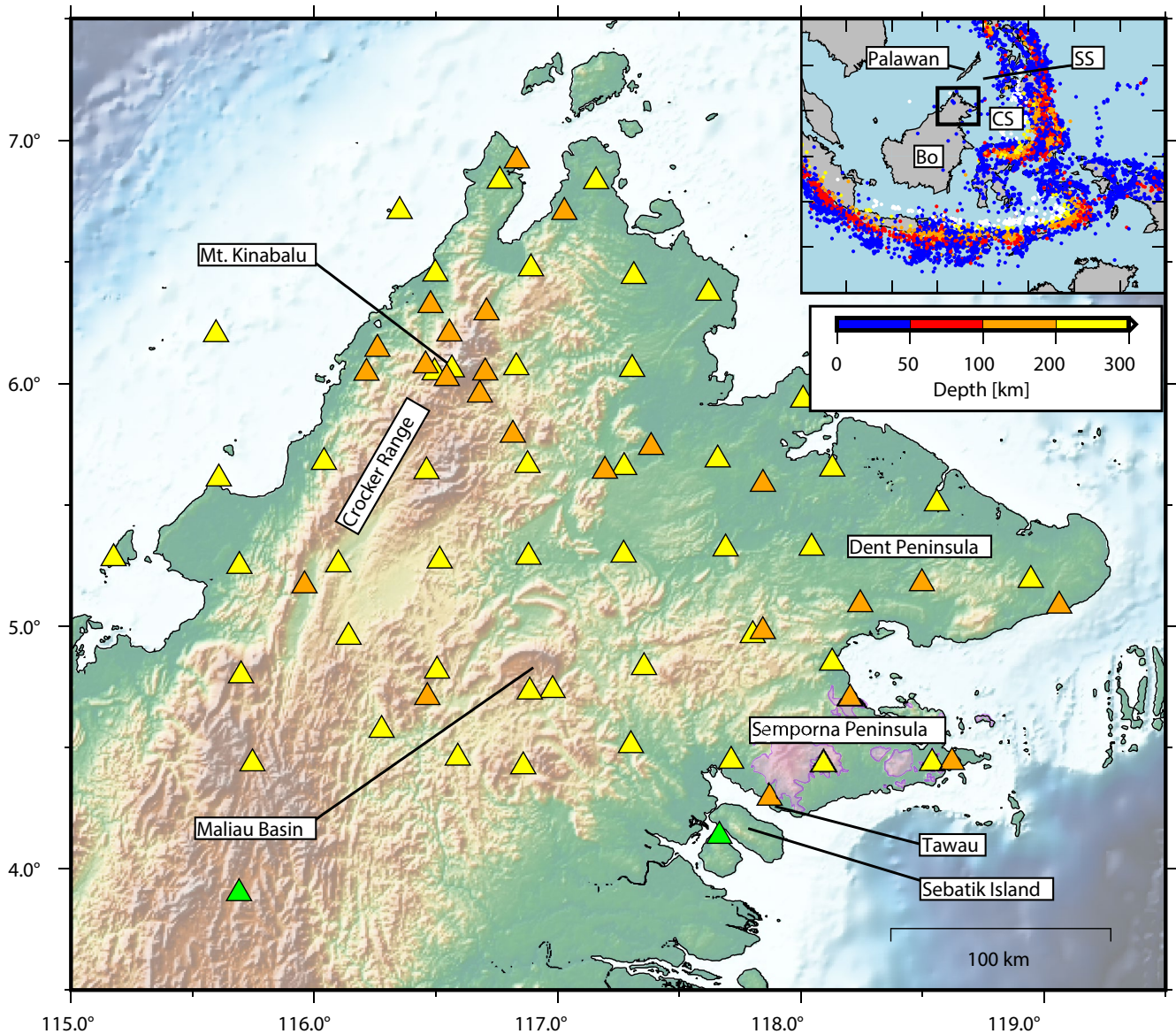
## 3. Phase Velocity

### 3.1. Two Plane Wave Tomography

We use two-plane-wave tomography (Forsyth & Li, 2005; Yang & Forsyth, 2006) to model the phase velocities across Sabah. The two-plane-wave method approximates the incoming wavefield as the superposition of two incoming plane waves with the effect of scattering accommodated using analytical sensitivity kernels (Zhou et al., 2004). We parametrize the velocity structure onto a grid of nodes with a grid-spacing of  $0.5^\circ$  across Sabah (Figure S1 in Supporting Information S1). An outer set of nodes assigned a larger a priori uncertainty and with a spacing of  $1^\circ$  is included to allow for unmodeled structure outside of Sabah. We describe the continuous velocity model using a Gaussian weighting function with a characteristic length scale of 65 km. This length scale parameter imposes implicit regularization in the inversion and sets the minimum recoverable size of velocity anomaly in the final phase velocity models.

### 3.2. Inversion

We first proceed by inverting for a single 1D phase velocity curve for Sabah (Figure 2a) using a standard, iterative, and linearized technique (Tarantola & Valette, 1982) alternating with a simulated annealing adjustment of the two-plane-wave parameters (Forsyth & Li, 2005; Yang & Forsyth, 2006). This step allows us to remove observations that are clearly degrading the result. As a starting model, we use a dispersion curve from the Global Dispersion Model (Ekström, 2011) for a point in the center of Sabah (black line, Figure 2a). After each inversion we remove observations with high amplitude ( $> 0.3$ ) or phase ( $> 4$  s) residuals and update the starting model.



**Figure 1.** Location of the study area with topography and bathymetry from GEBCO (GEBCO, 2020). The locations of seismic stations are indicated by colored triangles (Green: KalNet-9G; orange: Malaysian national network-MY; yellow: nBOSS-YC). The purple shading indicates the location of Plio-Pleistocene volcanism. Inset shows the location of Sabah in relation to SE Asia. CS, Celebes Sea; SS, Sulu Sea; Bo, Borneo.

Following the 1D inversion, we invert for the 2D phase velocity structure using the same inversion technique, the groomed data set and the 1D average phase velocity as the starting model (Figure 2a). The resulting phase velocity maps (Figure 2) show significant deviations from the 1D average (up to 0.5 km/s) and fit the data ~50% better than the 1D model indicating such deviations are required by the data. We estimate the posterior covariance of our model and isolate regions with a standard deviation of 60 m/s or less as being well constrained by the data (Harmon & Rychert, 2016). Recovery is good between 25 and 80 s period; at longer periods, the well constrained region diminishes in size until no part of the 130, 150, and 200 s models have standard deviations less than 60 m/s.

### 3.3. Synthetic Tests

We perform a suite of synthetic recovery tests to investigate the ability of our data set to recover velocity heterogeneities (Figures S2–S7 in Supporting Information S1). These tests include checkerboard tests, which, despite their

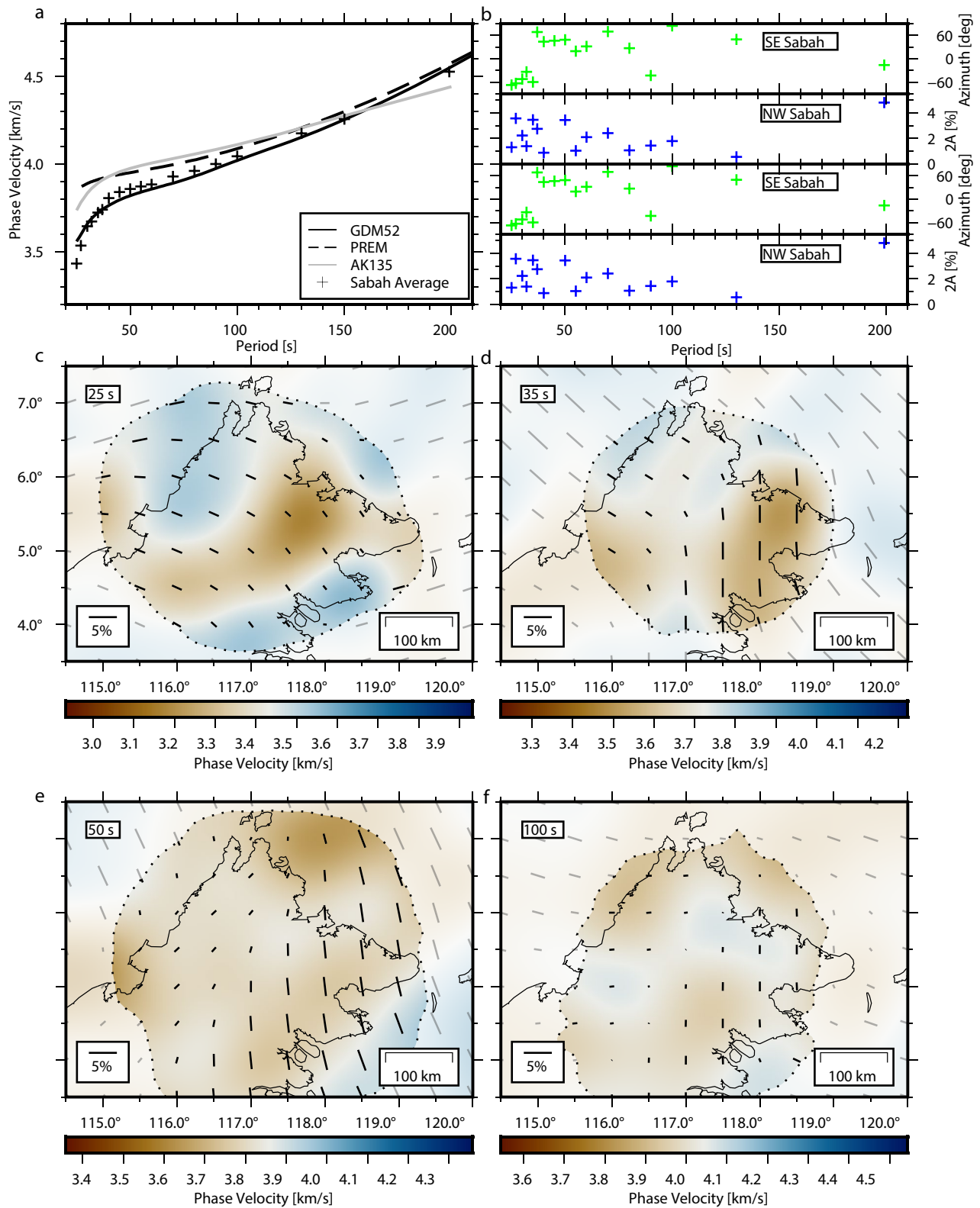


Figure 2.

well understood limitations (Rawlinson & Spakman, 2016) do provide insight into the implications of variable path coverage. Results show that we can recover features as small as 100–150 km across to periods of at least 70 s with limited smearing between adjacent regions.

The recovery of features observed in our final phase velocity model (Figure 2) is investigated using synthetic recovery tests. Low-velocity regions, such as those seen at short periods are well recovered, with only a slight decrease in amplitude and low-amplitude artefacts over the model area. A low-velocity anomaly to the southeast of Sabah, beneath the Semporna Peninsula (Figures 1 and 2) is recovered to periods of 55 s, but loses its definition at longer periods, while still being recognizable. Since, the observed feature is also present up to this period, we cannot say whether such a feature extends to longer periods, due to a lack of sensitivity.

### 3.4. Anisotropy

Azimuthal anisotropy is modeled by allowing the phase velocity to vary with back azimuth using the standard assumption of  $\pi$ -periodic (or  $2\theta$ ) anisotropy (Forsyth & Li, 2005). We divide our modeled region into three regions: outside of Sabah, SE Sabah, and NW Sabah based on a NW-SE change in the surface geology and to avoid the structure beneath Sabah being affected by artefacts produced by the anisotropic structure in the surrounding ocean basins.

At short periods (<37 s), the orientation of the fast axis of anisotropy (fast direction) is NW-SE (Figures 2c and 2d). In the mantle (Figures 2e and 2f), our model shows a difference in the fast direction between SE and NW Sabah. Under the Crocker Range, in NW Sabah, the fast directions are NE-SW, parallel to the dominant structural trend at the surface. In SE Sabah the fast direction varies slightly but is predominantly in a N-S orientation.

## 4. Shear Wave Inversion

To calculate the shear wave velocity structure, we first extract pseudo-dispersion curves from the phase velocity maps every  $0.2^\circ$ . Each pseudo-dispersion curve is inverted using a transdimensional, reversible-jump, Markov-chain Monte-Carlo algorithm implemented by the Bayhunter package (Dreiling & Tilmann, 2019; Green et al., 2020). We run 80 different chains, to explore the parameter space, each with a total of 500,000 model realizations. The first 250,000 models are discarded as “burn-in” models. We discard chains that have a median misfit greater than 5% of the average misfit and take a random sample of 100,000 models to assemble the final ensemble. The final model is calculated as the mean of the ensemble at 10 km intervals (Figure 3f).

Our shear wave model shares a similar horizontal resolution and sensitivity to that of the phase velocities. Due to the variation in the size and shape of the area of good recovery at each period, calculating a region which is well-recovered at all depths is not trivial. We conservatively show a region which is covered by at least 10 phase velocity observations. This seems to avoid complicated structure near the boundary of the model caused by insufficient data to constrain the  $V_{sv}$  structure. In depth, the calculated error suggests that we can successfully constrain structure between 20 and 300 km (Figure S10 in Supporting Information S1). However, because of the shape of the sensitivity kernels, the resolution of our model decreases with depth such that at depths of 150 km we cannot image anomalies <50 km thick.

At shallow depths (20 km, Figure 3a), the  $V_{sv}$  structure is dominated by a large low-velocity region extending through the center of Sabah in a NE-SW orientation. It is flanked on either side by high velocities beneath the Crocker Range and the Semporna Peninsula. At approximately the depth of the Moho (40 km, Figure 3c), the  $V_{sv}$  structure features an anomaly pattern that is opposite in polarity to that observed at 20 km depth, with high velocities across the middle of Sabah and low velocities beneath the Crocker Range and across a NE-SW oriented band in eastern Sabah. Between 60 and 80 km depth, low velocities are found in the SE corner of Sabah. At

---

**Figure 2.** Phase velocity results. The average dispersion is shown in panel (a) with the Preliminary Reference Earth Model (PREM) (Dziewonski & Anderson, 1981), ak135 (Kennett et al., 1995), and the Global Dispersion Model (Ekström, 2011) plotted for comparison. (b) The strength (lower panel) and orientation (upper panel) of the fast axis of anisotropy is plotted on panel. Results from the NW and SE Sabah are indicated by the blue and green crosses, respectively. Panels (c)–(f) show the phase velocity structure at periods of 25, 35, 50, and 100 s, respectively. Velocity is indicated by the color bar at the base of each panel centered at the average dispersion at this period. The orientation and strength of the fast axis of anisotropy is indicated by the direction and length of the black bar respectively. The 60 m/s error contour is delineated by the dotted line.

---

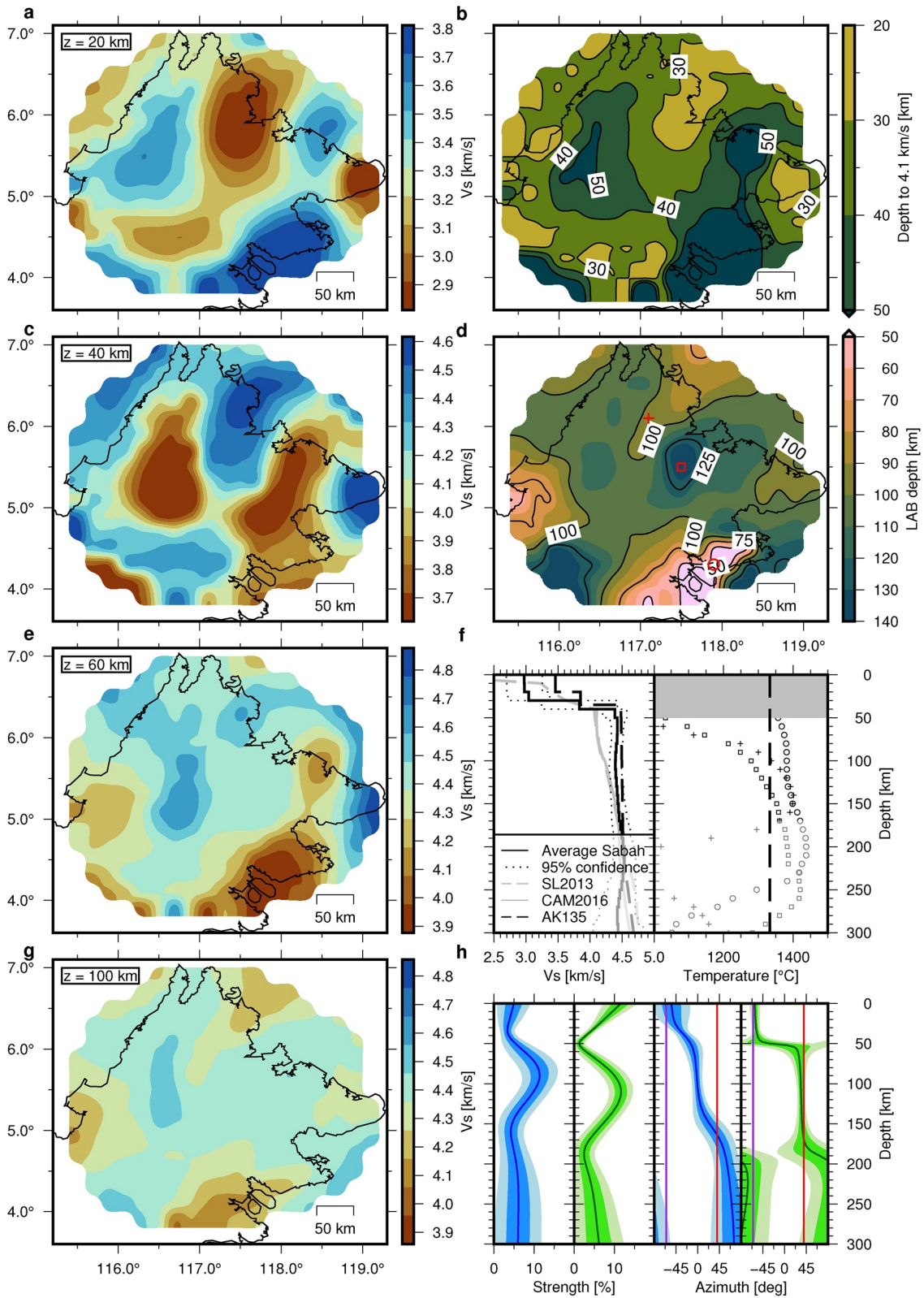


Figure 3.

greater depths, the velocity structure is more uniform to  $\sim 150$  km and due to the reduction in vertical resolution we elect not to interpret the 2D structure below these depths.

#### 4.1. Anisotropy

The observed anisotropy of Rayleigh Waves in NW and SE Sabah at periods from 25 to 130 s are inverted for depth-dependent anisotropy parameters  $G_{c,s}$ ,  $B_{c,s}$ , and  $H_{c,s}$  in each region to a depth of 300 km using the method outlined by Montagner and Nataf (1986). Using this framework, the Rayleigh-2 $\theta$  cosine and sine components can be written as follows:

$$A_{c,s}(\omega) = \frac{c}{U} \int \left( LK_L \frac{G_{c,s}}{L}(z) + AK_A \frac{B_{c,s}}{A}(z) + FK_F \frac{H_{c,s}}{F}(z) \right) dz \quad (1)$$

where,  $c$  is the phase velocity,  $U$  the group velocity and  $K_L$ ,  $K_A$ , and  $K_F$  are the eigenfrequency Fréchet derivatives of the corresponding Love parameters, which depend on frequency,  $\omega$ , and depth,  $z$ .

Rayleigh waves are only weakly sensitive to  $B_{c,s}$  and  $H_{c,s}$ , thus, we stabilize the inversion using literature values of peridotites by enforcing the scaling relations  $B_{c,s}/A = 1.25G_{c,s}/L$  and  $H_{c,s}/F = -0.11G_{c,s}/L$  (Ismail & Mainprice, 1998; Russell et al., 2019). The inversion is then performed using a damped-weighted least-square approach with first and second degree smoothing.

Results (Figure 3h) for both regions show a reduction in the strength of anisotropy through the crust, reaching a minimum at Moho depths (40–50 km). Another peak in anisotropy is observed at  $\sim 100$  km depth. If we assume the depth to the lithosphere-asthenosphere boundary (LAB) is  $\sim 100$  km (Section 4.3), the mean strength of anisotropy in the lithosphere is 5%–8%, at the upper end of estimates from teleseismic shear-wave-splitting observations (Pilia et al., 2021). In both regions the direction of anisotropy is  $-050^\circ$  at shallow depths. However, at greater depths ( $>50$  km), the two models diverge. The fast direction is modeled as  $000^\circ$  in SE Sabah, while in NW Sabah, the fast direction is oriented at  $045^\circ$ , subparallel to the Crocker Range.

The range-parallel fast directions we observe at upper mantle depths are similar to that observed beneath young orogens (e.g., Hirn et al., 1995; Meissner et al., 2002; Petrescu et al., 2020). However, the slow present-day deformation rate suggests this would be a frozen fabric from the collision between Sabah and Dangerous Grounds approximately 21 Ma.

In the crust, the range of possible mineral assemblages is much greater than in the mantle. Thus, relating anisotropic structure to deformation is more difficult (Lloyd et al., 2009). Given the prominent, along-strike metamorphic fabric (Tongkul, 1991) and a lack of any candidate collision (Hall, 2012), it seems unlikely that the range-perpendicular fast directions (NW-SE) we observe at shallow depths could be the result of a “frozen-in” fabric. Instead, we interpret the shallow anisotropy due to crustal extension, similar to that observed beneath the Aegean (Endrun et al., 2011).

#### 4.2. Crustal Thickness

We interpret the depth of a sharp velocity gradient between 20 and 50 km as the base of the crust (Figure 3f) and use the 4.1 km/s contour as a proxy for Moho depth throughout Sabah (Figure S8 in Supporting Information S1). Crustal thicknesses using this contour vary between 20 and 25 km in the north of Sabah to  $>50$  km beneath the

**Figure 3.** Shear wave velocity ( $V_{sv}$ ) structure. Panels (a), (c), (e), and (g) show horizontal slices through our 3D model at depths of 20, 40, 60, and 100 km respectively.  $V_{sv}$  is indicated by the color bar to the right of each panel centered at the average velocity at that depth. Panel (b) shows the depth to the 4.1 km/s contour (a proxy for crustal thickness). In panel (d) the depth to our calculated lithosphere-asthenosphere boundary ( $1333^\circ\text{C}$ ) is plotted. Panel (f) shows temperature profiles through our model at the three locations indicated by the red cross, circle and square in panel (d). The red cross, square and circle indicate the location of the temperature profiles plotted in panel (f). The temperature of the lithosphere-asthenosphere boundary is indicated by the black dashed line. The average  $V_{sv}$  profile is plotted on the left-side of panel (f) with ak135 (black dashed line) (Kennett et al., 1995) and 1D sections through two global tomography models at the center of Sabah (CAM2016-gray line, Priestley et al., 2018; SL2013-gray dashed line, Schaeffer & Lebedev, 2013). Panel (h) shows the strength (leftmost panels) and fast-direction (rightmost panels) from the inversion of anisotropy with depth for SE Sabah (blue) and NW Sabah (green). The line indicates the mean model from 1000 bootstraps with the lighter and darker filled regions indicating two and one standard deviations, respectively. Purple and red lines indicate the absolute plate motion direction and strike of the Crocker Range, respectively.

Crocker Range and a segment of eastern Sabah (Figure 3b). It is important to note here that because we attribute the low velocities found in the SE of Sabah (Figure 3e) to slow mantle velocities, we cannot estimate the thickness of the crust in this region.

The thickest crust in our model is greater than the maximum crustal thickness of the CRUST1 model in our study region (~35 km; Laske et al., 2013), although the average thickness is similar. To the northwest, our crustal thickness is similar to that obtained from seismic refraction lines in this region (Franke et al., 2008), suggesting that our choice of 4.1 km/s is appropriate. Between the two regions of thick crust, the crust thins to 20–25 km in a region that extends into the Sulu Sea (SS). Assuming the 40–50 km thick crust beneath the Crocker Range and Eastern Sabah represents the pre-stretching crustal thickness, we calculate a  $\beta$ -factor (degree of extension) between 1.3 and 2.

### 4.3. Temperature and Thickness of the Lithospheric

To estimate the lithospheric thickness we convert our  $V_{sv}$  model to temperature using the following equation (Priestley & McKenzie, 2006; Roberts et al., 2018):

$$V_s = (1 + b_v(z - 50))(m(T - 273) + c + A \exp(-E - PV_a)/RT) \quad (2)$$

where,  $z$  is the depth (in km),  $T$  is the temperature (in K) and  $b_v$ ,  $c$ ,  $A$ ,  $E$ ,  $m$ , and  $V_a$  are empirically fitted constants with the values  $3.84 \times 10^{-4} \text{ km}^{-1}$ ,  $4.72 \text{ km s}^{-1}$ ,  $-1.8 \times 10^{16} \text{ m s}^{-1}$ ,  $409 \text{ KJ mol}^{-1}$ ,  $-2.8 \times 10^{-1} \text{ m s}^{-1}$ , and  $10 \times 10^{-6} \text{ m}^3 \text{ mol}^{-1}$ , respectively. The pressure is assumed to be lithostatic and is calculated as  $P = \rho g z$ , where,  $\rho$  is the density ( $3,330 \text{ kg m}^{-3}$ ) and  $g$  is the acceleration due to gravity ( $9.81 \text{ ms}^{-2}$ ). Using Equation 2 we convert our  $V_{sv}$  model into temperature and estimate the depth of the LAB by assuming the ambient temperature of the asthenosphere is  $1333^\circ\text{C}$  (Figure S14 in Supporting Information S1; i.e., a potential temperature of  $1300^\circ\text{C}$ , an adiabatic temperature gradient of  $\sim 0.3^\circ\text{C/km}$  and a depth of  $\sim 100 \text{ km}$ ; Parsons & Sclater, 1977); thus the LAB depth is the depth to the  $1333^\circ\text{C}$  contour (Figure 3f).

The results show that the depth to the LAB is approximately 100 km, much thicker than the  $\sim 50 \text{ km}$  estimated from global tomography models (Priestley et al., 2018; Roberts et al., 2018; Schaeffer & Lebedev, 2013). In addition, there are significant variations in the depth to the LAB across Sabah. In the SE corner of Sabah, beneath the Semporna Peninsular and Sempatik Island, the depth to the LAB is  $\leq 50 \text{ km}$ . In the north, a shallow LAB region extends into Sabah in the NE-SW direction from the SS. To the east and west of this region, there are regions of increased LAB depth.

## 5. Discussion

### 5.1. Extension

The  $V_{sv}$  model presented here allows us to investigate the crustal and upper mantle structure beneath Sabah. The region has been the site of both southeastward subduction of the proto-South China Sea and northwestward subduction of the CS (Hall & Blundell, 1996). Despite this post-subduction setting, in our model we see no evidence for any high-velocity dipping slabs beneath Sabah. However, this is to be expected since: (a) surface waves are relatively insensitive to these dipping structures (although, notably they can image thick subducting plates, e.g., Wang & Tape, 2014); and (b) it is likely that the slabs have broken off and are freely descending through the mantle (Hall, 2013; Pilia et al., 2021). While little is known about the current depth of the slabs, it is likely that they are deeper than the maximum depth imaged in this study (200–300 km).

Our model reveals that the crustal and shallow mantle structure follows that expected from extension acting upon the region, agreeing with estimates derived from receiver function analysis (Pilia et al., 2021). Low velocities at shallow depths (Figure 3a) are likely to be due to Neogene sedimentary rocks in these regions; while our data are insensitive to the thickness of such sediments, estimates from sedimentary logging suggest that in places, it could be up to 7.5 km thick (Balaguru & Nichols, 2004; Tongkul & Chang, 2003). The spatial pattern of the low-velocities suggest that these sediments extend across the central region of Sabah in a broad NE-SW oriented swath. The lowest velocities are found on the northern coast. Further inland, the relative reduction of the velocities decreases, likely due to a change in the depth extent of the low-velocity sediments, with the depth sensitivity of our data modulating the observed velocities.



Further evidence for crustal extension can be found in the crustal thickness estimates, depth slice at 40 km (Figures 3b and 3c) and seismic anisotropy. High-velocity regions indicate the locations of thinned crust relative to the thick crust beneath the Crocker Range and Eastern Sabah. The region of thinnest crust is in the north of Sabah and extends into the SS, suggesting NW-SE orientated extension, matching the observed fast directions in the crust. Extension in the SS dates to the early Miocene and proceeded to seafloor spreading (Lai et al., 2021; Silver & Rangin, 1991), before the construction of a subaerial island arc on top of the oceanic basement (Hall, 2013). The SS reaches its maximum depth closer to the Philippines, but seafloor >3 km depth extends to at least the continental shelf off the north-east coast of Sabah. Our results support a model in which extension continued into Sabah, causing thinning of the crust and the formation of an asymmetric sedimentary basin (Hall, 2013; Lai et al., 2021; Tsikouras et al., 2021). Other back-arc basins show similar features (e.g., Lau Basin, Parson & Wright, 1996).

Our LAB depth estimates also reveal thinning of the lithosphere in a similar location, although the spatial pattern is not the same as at crustal depths. We measure a region of thinned lithosphere (relative to the average, 100 km) extending into the SS approximately 50 km northwest of the thinnest crust. Accompanying the thinned lithosphere is a region of thicker than average lithosphere to the south-east, while to the north-east an extended region of slightly thicker lithosphere underlies the Crocker Range.

## 5.2. Removal of the Lithosphere

Our LAB depth map (Figure 3d) has two regions of extremely thin lithosphere, to the south, beneath the Semporna Peninsula and to the west. To the south, our results show that the lithospheric thickness is less than 50 km, and shear velocities are  $\sim 3.9$  km/s, much lower than expected for ambient mantle (Figure S13 in Supporting Information S1). Removal of the lithosphere and the emplacement of a hot layer beneath Borneo was proposed by Roberts et al. (2018) as an explanation for the Neogene uplift of Borneo. This model was partly guided by the shear wave velocities from global tomography models (Priestley et al., 2018; Schaeffer & Lebedev, 2013), which show low-velocities beneath most of Borneo (Figure 3f). However, global velocity models have limited resolution beneath Borneo, because of a restricted number of seismic stations. Our  $V_{sv}$  model (Figure 3f) indicates that beneath Sabah, these global models are underestimating the velocity, which is instead closer to  $ak135$ /typical continental lithosphere (Kennett et al., 1995). The lack of a continuous low-velocity layer beneath Sabah precludes widespread Neogene uplift being driven by the whole-scale removal of the lithosphere. Instead, our results suggest that any lithospheric removal occurs in localized patches possibly caused by convective instabilities and “lithospheric drips” (Houseman & McKenzie, 1982). We are aware, however, that there is no evidence in our model for a high-velocity region underlying the low-velocity layer beneath Tawau which would conclusively argue for a drip.

Removal of the lithosphere beneath Tawau explains the presence of recent (Lim, 1985) volcanic units distributed over the Semporna Peninsula, as suggested by Pilia et al. (2021). The lavas have affinity with ocean island basalts (OIB) rather than island arcs (Macpherson et al., 2010), and have modeled temperatures and pressures of melt equilibration at  $1362 \pm 39^\circ\text{C}$  and  $1.66 \pm 0.24$  GPa ( $55 \pm 8$  km; Roberts et al., 2018). These results are in line with the temperatures estimated from Equation 2 ( $1350$ – $1370^\circ\text{C}$  at  $50$ – $60$  km depth) and indicate the replacement of the lithosphere with hotter than average asthenosphere and the presence of melt in the upper mantle causing the observed low  $V_{sv}$ . Importantly, our velocity model suggests this has happened in localized patches  $50$ – $100$  km across, rather than across the whole of Borneo. We speculate that this process could have occurred in other areas of Borneo, since other recent volcanic eruptions also share OIB affinity (Cullen et al., 2013).

## 6. Conclusions

Collectively, our  $V_{sv}$  model, interpreted LAB depth and crustal thicknesses argue that uplift across northern Borneo cannot be caused by collision or wholesale replacement of the lithosphere by hot asthenosphere. Instead, thinning of the lithosphere indicates a primary role for NW-SE directed extension driven by back-arc spreading behind the NW subducting CS plate (Hall, 2013; Tsikouras et al., 2021). Where the crust is thin ( $\sim 25$  km), we image a sedimentary basin formed in the early Miocene between the Crocker Range and East Sabah. The  $\beta$ -factor is estimated to be between 1.3 and 2, well-below that expected for crustal breakup and onset of seafloor spreading. Beneath the Crocker Range, crustal thicknesses reach 55 km, consistent with continental collision.

Removal of the lithosphere has occurred in discrete patches across Sabah, such as beneath the Semporna Peninsula. Our calculated temperatures reveal that, in this location, hot asthenosphere has replaced the lithosphere, which may have dripped off because of a convective instability. Across the rest of Sabah, the lithosphere is approximately 100 km thick except where extension has caused thinning of the lithosphere. Our results show the variety of crustal and lithospheric processes that occur when subduction ends and how careful interpretation of the available data is needed to unpick the observed data.

## Data Availability Statement

The supplementary information included in this submission includes the observations made using the data set, station locations and further details on the synthetic recovery tests and model quality. These data, and the final model are assigned the doi: <https://doi.org/10.5281/zenodo.5465032> and are available on Zenodo. Waveform data from the nBOSS array ([https://doi.org/10.7914/SN/YC\\_2018](https://doi.org/10.7914/SN/YC_2018)) is under embargo until February 2023 where it will be available for download from the IRIS. Access to data from the Malaysian national network (<https://www.fdsn.org/networks/detail/MY/>) is restricted. Two stations from a temporary network deployed in Kalimantan ([https://doi.org/10.7914/SN/9G\\_2018](https://doi.org/10.7914/SN/9G_2018)) were also used in the study, requests for this data should be sent to TG or NR.

## Acknowledgments

We thank all those involved in the deployment of the nBOSS seismic array. BMKG and ITB facilitated the deployment of the Kalimantan array; without them, the stations could not have been deployed. nBOSS seismometers were provided by the University of Cambridge, University of Aberdeen, and SEIS-UK (Loan 1038). Many thanks go to Nick Harmon and Yingjie Yang, both of whom provided vital software. Many figures were made using GMT (Wessel et al., 2019). TG is funded by a Leverhulme Early Career Research Fellowship (ECF-049). SP acknowledges support from the Natural Environmental Research Council (NERC) Grant NE/R013500/1 and from the European Union's Horizon 2020 Research and Innovation Program under Marie Skłodowska-Curie Grant Agreement 790203. Earth Sciences Cambridge publication number ESC-6308.

## References

- Balaguru, A., & Nichols, G. (2004). Tertiary stratigraphy and basin evolution, southern Sabah (Malaysian Borneo). *Journal of Asian Earth Sciences*, 23(4), 537–554. <https://doi.org/10.1016/j.jseae.2003.08.001>
- Cullen, A., Macpherson, C., Taib, N. I., Burton-Johnson, A., Geist, D., Spell, T., & Banda, R. M. (2013). Age and petrology of the Usun Apau and Linau Balui volcanics: Windows to central Borneo's interior. *Journal of Asian Earth Sciences*, 76, 372–388. <https://doi.org/10.1016/j.jseae.2013.05.003>
- Cullen, A. B. (2010). Transverse segmentation of the Baram-Balabac Basin, NW Borneo: Refining the model of Borneo's tectonic evolution. *Petroleum Geoscience*, 16(1), 3–29. <https://doi.org/10.1144/1354-079309-828>
- Dreiling, J., & Tilmann, F. (2019). *BayHunter - McMC transdimensional Bayesian inversion of receiver functions and surface wave dispersion* (Version 1.0) (Application/octet-stream,application/octet-stream,application/octet-stream,application/octet-stream,application/octet-stream Files) (p.5). GFZ Data Services. <https://doi.org/10.5880/GFZ.2.4.2019.001>
- Dziewonski, A. M., & Anderson, D. L. (1981). Preliminary reference Earth model. *Physics of the Earth and Planetary Interiors*, 25(4), 297–356. [https://doi.org/10.1016/0031-9201\(81\)90046-7](https://doi.org/10.1016/0031-9201(81)90046-7)
- Ekström, G. (2011). A global model of Love and Rayleigh surface wave dispersion and anisotropy, 25–250 s. *Geophysical Journal International*, 187(3), 1668–1686. <https://doi.org/10.1111/j.1365-246X.2011.05225.x>
- Endrun, B., Lebedev, S., Meier, T., Tirel, C., & Friederich, W. (2011). Complex layered deformation within the Aegean crust and mantle revealed by seismic anisotropy. *Nature Geoscience*, 4(3), 203–207. <https://doi.org/10.1038/ngeo1065>
- Forsyth, D. W., & Li, A. (2005). Array analysis of two-Dimensional variations in surface wave phase velocity and azimuthal anisotropy in the presence of multipathing interference. *Geophysical Monograph Series*, 157, 81–97. <https://doi.org/10.1029/156GM06>
- Franke, D., Barckhausen, U., Heyde, I., Tingay, M., & Ramli, N. (2008). Seismic images of a collision zone offshore NW Sabah/Borneo. *Marine and Petroleum Geology*, 25(7), 606–624. <https://doi.org/10.1016/j.marpetgeo.2007.11.004>
- GEBCO. (2020). The GEBCO\_2020 Grid-A continuous terrain model of the global oceans and land (Version 1) [Network Common Data Form]. *British Oceanographic Data Centre, National Oceanography Centre*. <https://doi.org/10.5285/A29C5465-B138-234D-E053-6C86ABC040B9>
- Goforth, T., & Herrin, E. (1979). Phase-matched filters: Application to the study of love waves. *Bulletin of the Seismological Society of America*, 69(1), 27–44.
- Green, R. G., Sens-Schönfelder, C., Shapiro, N., Koulakov, I., Tilmann, F., Dreiling, J., et al. (2020). Magmatic and sedimentary structure beneath the Klyuchevskoy volcanic group, Kamchatka, from ambient noise tomography. *Journal of Geophysical Research: Solid Earth*, 125(3), e2019JB018900. <https://doi.org/10.1029/2019JB018900>
- Greenfield, T., Widiyantoro, S., & Rawlinson, N. (2018). *Kalimantan temporary network*. International Federation of Digital Seismograph Networks. [https://doi.org/10.7914/SN/9G\\_2018](https://doi.org/10.7914/SN/9G_2018)
- Hall, R. (2012). Late Jurassic–Cenozoic reconstructions of the Indonesian region and the Indian Ocean. *Tectonophysics*, 570–571, 1–41. <https://doi.org/10.1016/j.tecto.2012.04.021>
- Hall, R. (2013). Contraction and extension in northern Borneo driven by subduction rollback. *Journal of Asian Earth Sciences*, 76, 399–411. <https://doi.org/10.1016/j.jseae.2013.04.010>
- Hall, R., & Blundell, D. J. (1996). Tectonic evolution of SE Asia: Introduction. *Geological Society, London, Special Publications*, 106(1), vii–xiii. <https://doi.org/10.1144/GSL.SP.1996.106.01.01>
- Harmon, N., & Rychert, C. A. (2016). Joint inversion of teleseismic and ambient noise Rayleigh waves for phase velocity maps, an application to Iceland: Noise-Teleseismic Phase Velocity Maps. *Journal of Geophysical Research: Solid Earth*, 121(8), 5966–5987. <https://doi.org/10.1002/2016JB012934>
- Hirn, A., Jiang, M., Sapin, M., Diaz, J., Necessian, A., Lu, Q. T., et al. (1995). Seismic anisotropy as an indicator of mantle flow beneath the Himalayas and Tibet. *Nature*, 375(6532), 571–574. <https://doi.org/10.1038/375571a0>
- Houseman, G., & McKenzie, D. P. (1982). Numerical experiments on the onset of convective instability in the Earth's mantle. *Geophysical Journal International*, 68(1), 133–164. <https://doi.org/10.1111/j.1365-246X.1982.tb06966.x>
- ISC. (2021). ISC Bulletin [Data set]. International Seismological Centre. <https://doi.org/10.31905/D808B830>
- Ismail, W. B., & Mainprice, D. (1998). An olivine fabric database: An overview of upper mantle fabrics and seismic anisotropy. *Tectonophysics*, 296(1), 145–157. [https://doi.org/10.1016/S0040-1951\(98\)00141-3](https://doi.org/10.1016/S0040-1951(98)00141-3)
- Kennett, B. L. N., Engdahl, E. R., & Buland, R. (1995). Constraints on seismic velocities in the Earth from traveltimes. *Geophysical Journal International*, 122(1), 108–124. <https://doi.org/10.1111/j.1365-246X.1995.tb03540.x>

- Lai, C. K., Xia, X. P., Hall, R., Meffre, S., Tsikouras, B., Balangue-Tarriela, M. I. R., et al. (2021). Cenozoic Evolution of the Sulu Sea Arc-Basin system: An overview. *Tectonics*, *40*(2), e2020TC006630. <https://doi.org/10.1029/2020TC006630>
- Landisman, M., & Dziewonski, A. (1969). Recent improvements in the analysis of surface wave observations. *Geophysical Journal of the Royal Astronomical Society*, *17*, 369–403.
- Laske, G., Masters, G., Ma, Z., & Pasyanos, M. (2013). *Update on CRUST1.0 - A 1-degree Global Model of Earth's Crust*. 15, EGU2013–2658. Presented at the EGU General Assembly Conference Abstracts.
- Lim, P. S. (1985). *Geological map of Sabah 1:500,000*. Geological Survey of Malaysia.
- Lloyd, G. E., Butler, R. W. H., Casey, M., & Mainprice, D. (2009). Mica, deformation fabrics and the seismic properties of the continental crust. *Earth and Planetary Science Letters*, *288*(1), 320–328. <https://doi.org/10.1016/j.epsl.2009.09.035>
- Macpherson, C. G., Chiang, K. K., Hall, R., Nowell, G. M., Castillo, P. R., & Thirlwall, M. F. (2010). Plio-Pleistocene intra-plate magmatism from the southern Sulu Arc, Semporna peninsula, Sabah, Borneo: Implications for high-Nb basalt in subduction zones. *Journal of Volcanology and Geothermal Research*, *190*(1–2), 25–38. <https://doi.org/10.1016/j.jvolgeores.2009.11.004>
- Meissner, R., Mooney, W. D., & Artemieva, I. (2002). Seismic anisotropy and mantle creep in young orogens. *Geophysical Journal International*, *149*(1), 1–14. <https://doi.org/10.1046/j.1365-246X.2002.01628.x>
- Montagner, J. P., & Nataf, H. C. (1986). A simple method for inverting the azimuthal anisotropy of surface waves. *Journal of Geophysical Research*, *91*(B1), 511–520. <https://doi.org/10.1029/JB091iB01p00511>
- Morley, C. K., & Back, S. (2008). Estimating hinterland exhumation from late orogenic basin volume, NW Borneo. *Journal of the Geological Society*, *165*(1), 353–366. <https://doi.org/10.1144/0016-76492007-067>
- Mustafar, M. A., Simons, W. J. F., Tongkul, F., Satirapod, C., Omar, K. M., & Visser, P. N. A. M. (2017). Quantifying deformation in north Borneo with GPS. *Journal of Geodesy*, *91*(10), 1241–1259. <https://doi.org/10.1007/s00190-017-1024-z>
- Parson, L. M., & Wright, I. C. (1996). The Lau-Havre-Taupo back-arc basin: A southward-propagating, multi-stage evolution from rifting to spreading. *Tectonophysics*, *263*(1), 1–22. [https://doi.org/10.1016/S0040-1951\(96\)00029-7](https://doi.org/10.1016/S0040-1951(96)00029-7)
- Parsons, B., & Sclater, J. G. (1977). An Analysis of the variation of Ocean floor bathymetry with depth. *Journal of Geophysics Research*, *82*(5), 805–830.
- Petrescu, L., Pondrelli, S., Salimbeni, S., Faccenda, M., & the AlpArray Working Group. (2020). Mantle flow below the central and greater Alpine region: Insights from SKS anisotropy analysis at AlpArray and permanent stations. *Solid Earth*, *11*(4), 1275–1290. <https://doi.org/10.5194/se-11-1275-2020>
- Pilia, S., Davies, D. R., Hall, R., Bacon, C., Gilligan, A., Greenfield, T., et al. (2021). Effects of post-subduction processes on continental lithosphere. <https://doi.org/10.21203/rs.3.rs-861968/v1>
- Priestley, K., & McKenzie, D. (2006). The thermal structure of the lithosphere from shear wave velocities. *Earth and Planetary Science Letters*, *244*(1), 285–301. <https://doi.org/10.1016/j.epsl.2006.01.008>
- Priestley, K., McKenzie, D., & Ho, T. (2018). A lithosphere–Asthenosphere boundary—A global model derived from multimode surface-wave tomography and petrology. In *Lithospheric discontinuities* (pp. 111–123). American Geophysical Union (AGU). <https://doi.org/10.1002/9781119249740.ch6>
- Rawlinson, N. (2018). *North Borneo orogeny seismic survey*. International Federation of Digital Seismograph Networks. [https://doi.org/10.7914/SN/YC\\_2018](https://doi.org/10.7914/SN/YC_2018)
- Rawlinson, N., & Spakman, W. (2016). On the use of sensitivity tests in seismic tomography. *Geophysical Journal International*, *205*(2), 1221–1243. <https://doi.org/10.1093/gji/ggw084>
- Roberts, G. G., White, N., Hoggard, M. J., Ball, P. W., & Meenan, C. (2018). A Neogene history of mantle convective support beneath Borneo. *Earth and Planetary Science Letters*, *496*, 142–158. <https://doi.org/10.1016/j.epsl.2018.05.043>
- Russell, J. B., Gaherty, J. B., Lin, P. Y. P., Lizzaralde, D., Collins, J. A., Hirth, G., & Evans, R. L. (2019). High-resolution Constraints on Pacific upper mantle Petrofabric inferred from surface-wave anisotropy. *Journal of Geophysical Research: Solid Earth*, *124*(1), 631–657. <https://doi.org/10.1029/2018JB016598>
- Schaeffer, A. J., & Lebedev, S. (2013). Global shear speed structure of the upper mantle and transition zone. *Geophysical Journal International*, *194*(1), 417–449. <https://doi.org/10.1093/gji/ggt095>
- Silver, E. A., & Rangin, C. (1991). Leg 124 tectonic synthesis. In E. A. Silver, C. Rangin, von Breyman, M. T., et al. (Eds.), *Proceedings of the Ocean Drilling Program, 124 scientific results* (Vol. 124). Ocean Drilling Program. <https://doi.org/10.2973/odp.proc.sr.124.1991>
- Simons, W. J. F., Socquet, A., Vigny, C., Ambrosius, B. A. C., Abu, S. H., Promthong, C., et al. (2007). A decade of GPS in Southeast Asia: Resolving Sundaland motion and boundaries. *Journal of Geophysical Research*, *112*, B06420. <https://doi.org/10.1029/2005JB003868>
- Tarantola, A., & Valette, B. (1982). Inverse problems = quest for information. *Journal of Geophysics*, *50*, 159–170.
- Tongkul, F. (1991). Tectonic evolution of Sabah, Malaysia. *Journal of Southeast Asian Earth Sciences*, *6*(3), 395–405. [https://doi.org/10.1016/0743-9547\(91\)90084-B](https://doi.org/10.1016/0743-9547(91)90084-B)
- Tongkul, F. (1995). The Paleogene basins of Sabah, East Malaysia. *Bulletin of the Geological Society of Malaysia*, *37*, 301–308. <https://doi.org/10.7186/bgsm37199520>
- Tongkul, F., & Chang, F. K. (2003). Structural geology of the Neogene Maliau Basin, Sabah. *Bulletin of the Geological Society of Malaysia*, *47*, 51–61. <https://doi.org/10.7186/bgsm47200304>
- Tsikouras, B., Lai, C. K., Ifandi, E., Norazme, N. A., Teo, C. H., & Xia, X. P. (2021). New zircon radiometric U/Pb ages and Lu-Hf isotopic data from the ultramafic-mafic sequences of Ranau and Telupid (Sabah, east Malaysia): Time to reconsider the geological evolution of SE Asia? *Geology*, *49*(7), 789–793. <https://doi.org/10.1130/G48126.1>
- Wang, Y., & Tape, C. (2014). Seismic velocity structure and anisotropy of the Alaska subduction zone based on surface wave tomography. *Journal of Geophysical Research: Solid Earth*, *119*(12), 8845–8865. <https://doi.org/10.1002/2014JB011438>
- Wessel, P., Luis, J. F., Uieda, L., Scharroo, R., Wobbe, F., Smith, W. H. F., & Tian, D. (2019). The generic mapping tools Version 6. *Geochemistry, Geophysics, Geosystems*, *20*(11), 5556–5564. <https://doi.org/10.1029/2019GC008515>
- Yang, Y., & Forsyth, D. W. (2006). Regional tomographic inversion of the amplitude and phase of Rayleigh waves with 2-D sensitivity kernels. *Geophysical Journal International*, *166*(3), 1148–1160. <https://doi.org/10.1111/j.1365-246X.2006.02972.x>
- Zhou, Y., Dahlen, F. A., & Nolet, G. (2004). Three-dimensional sensitivity kernels for surface wave observables. *Geophysical Journal International*, *158*(1), 142–168. <https://doi.org/10.1111/j.1365-246X.2004.02324.x>