

# Depositional system and plant ecosystem responses to long-term low tempo volcanism, the Interbasaltic Formation, Antrim Lava Group



Adam Beresford-Browne<sup>1\*</sup>, David Jolley<sup>2</sup>, John Millett<sup>2,3</sup>, Carl Stevenson<sup>1</sup>, Sebastian Watt<sup>1</sup>, Rob Raine<sup>4</sup> and Elliot Carter<sup>5</sup>

<sup>1</sup>University of Birmingham, Birmingham, UK

<sup>2</sup>University of Aberdeen, Aberdeen, UK

<sup>3</sup>VBER, Høyenhold, Blindernveien 5, N-0361 Oslo, Norway

<sup>4</sup>Geological Survey of Northern Ireland, UK

<sup>5</sup>Trinity College Dublin, Ireland

AB-B, 0000-0001-9783-8341

\*Correspondence: [geologist@postmaster.co.uk](mailto:geologist@postmaster.co.uk)

**Abstract:** The Antrim Lava Group of NE Ireland comprises a volcanic sequence dominated by basaltic lava flows. Including subsidiary sedimentary interlayers and some evolved lavas and intrusions, the overall sequence reaches a cumulative thickness of ~800 m. The tempo of eruption of the Antrim Lava Group is poorly constrained but can be evaluated via weathering patterns and environmental reconstructions derived from lava-flow interbeds. In this contribution, we present palynology from a newly identified and well-developed 2.0–2.5 m thick sedimentary sequence (interbed) at Ross's Quarry, Ballycastle, Co. Antrim, that helps elucidate the contemporary development of environments in a setting subject to periodic basaltic volcanism. The interbed is subdivided into geologically distinct subunits of cross-bedded and parallel-bedded sandstones and sandy siltstones, all rich in visible organic remains such as rootlets and fragments of wood and bark. A total of 19 samples was collected from the sequence and subsequently analysed for palynological content. The palynomorph data point toward a diversity of inputs ranging from estuaries, chalky soils, dry soils, swamps, lakes, floodplains, sand bars, wet soils, established bogs and fenlands. In contrast to current understanding, the palynological data and their inferred environments collectively reveal the presence of flora that favour a temperate climate rather than the subtropical climate that has previously been inferred from the lateritic interbeds of the Antrim Lava Group. By combining the Ross's Quarry observations with palynological data from other quarry sites and boreholes in Antrim, we provide new insights into the climate, weathering systems and eruptive history of the Antrim Lava Group.

**Supplementary material:** Supporting palynological information is available at <https://doi.org/10.6084/m9.figshare.c.7109876>

The predominantly basaltic rocks of the Antrim Lava Group, Northern Ireland, were erupted during the formation of the North Atlantic Igneous Province (NAIP) and covered much of NE Ireland during the Paleocene (Fig. 1a). Available chronostratigraphical evidence indicates that the Antrim Lava Group (ALG) mainly erupted during the Danian and Selandian stages of the Paleocene (63.24–60 Ma; Wilkinson *et al.* 2017), part of Phase 1 of North Atlantic rifting (Knox and Morton 1988; Jolley *et al.* 2021). The Antrim Lava Group is divided into three formations; the oldest and youngest of these, respectively termed the Lower Basalt Formation (LBF) and Upper Basalt Formation (UBF; Patterson and Mitchell 1955; Old 1975), comprise olivine-normative basalt. Positioned stratigraphically between these

lavas are the sedimentary and varied extrusive igneous rocks of the Interbasaltic Formation (IBF; Cole *et al.* 1912; Patterson and Mitchell 1955; Old 1975). This formation includes a series of quartz-normative tholeiitic basalts, termed the Causeway Tholeiite Member (CTM), present predominantly (if not exclusively) to the north of the Tow Valley Fault, as well as a number of dacitic intrusions and rhyolitic lavas occurring across the lava plateau, e.g. the Tardree Rhyolite (Fig. 1a). In the long standing but now revised Antrim Lava Group lithostratigraphy (cf. fig. 1 in Simms 2021) the Interbasaltic Formation included the Port na Spaniagh Member (containing weathered LBF Basalts, now placed at the top of the Lower Basalt Formation by Simms 2021) and the Ballylagan Member (containing weathered Causeway

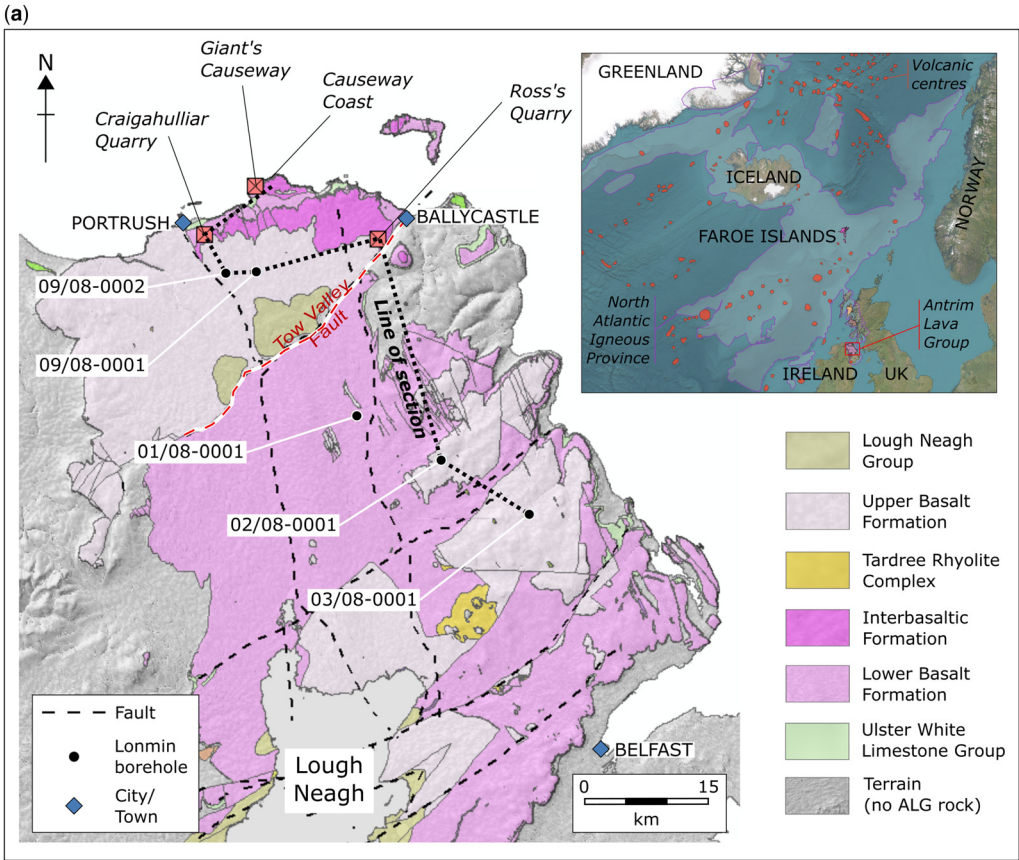
From: Kilhams, B., Holford, S., Gardiner, D., Gozzard, S., Layfield, L., McLean, C., Thackrey, S. and Watson, D. (eds) *The Impacts of Igneous Systems on Sedimentary Basins and their Energy Resources*.

Geological Society, London, Special Publications, 547,

<https://doi.org/10.1144/SP547-2023-75>

© 2024 The Author(s). This is an Open Access article distributed under the terms of the Creative Commons Attribution License (<http://creativecommons.org/licenses/by/4.0/>). Published by The Geological Society of London.

Publishing disclaimer: [www.geolsoc.org.uk/pub\\_ethics](http://www.geolsoc.org.uk/pub_ethics)



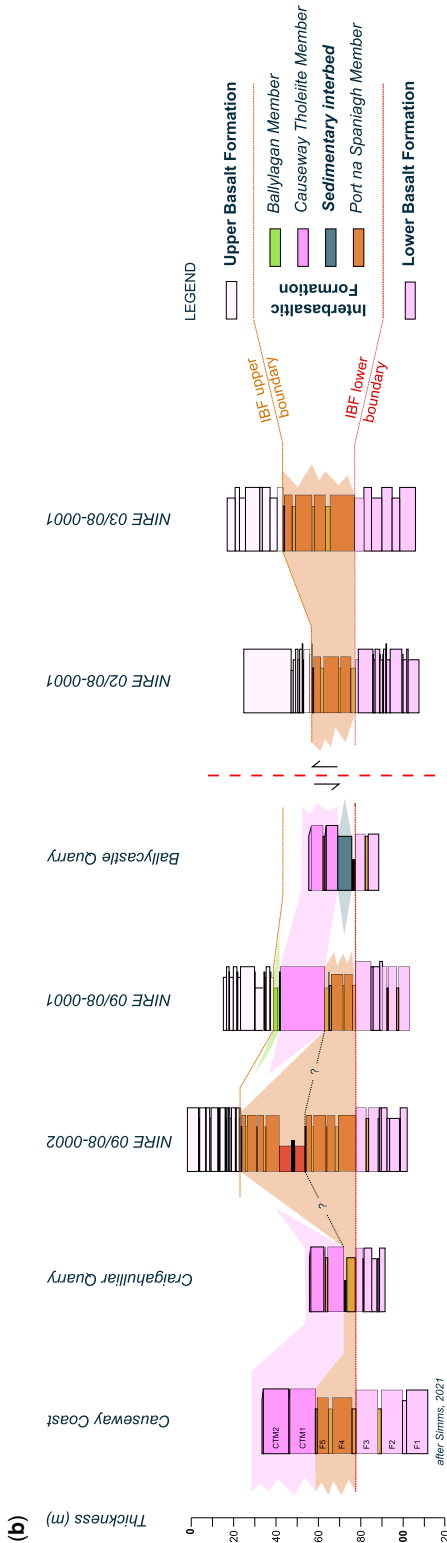
**Fig. 1.** (a) Map of the Antrim Lava Group. The inset map shows the location of the Antrim Lava Group, NAIP sub-provinces, and the NAIP outline (á Horni *et al.* 2017) within the wider setting.

Tholeiite Member basalts), respectively identified by their position below and above the Causeway Tholeiite Member (Patterson and Mitchell 1955) (Fig. 1b). However, the current absence of identified Causeway Tholeiite Member outcrops south of the Tow Valley Fault makes it difficult to correlate these other members beyond their type localities.

The Antrim Lava Group forms one part of the British and Irish Paleogene Igneous Province (BIPIP), along with the similar terranes of Skye, Mull and Arran on the west side of Scotland (collectively the Hebridean Igneous Subprovince). However, unlike the lava successions of Mull and Skye NAIP volcanics (Bailey *et al.* 1924; Anderson and Dunham 1966), the thick, heterolithic volcanic and sedimentary rocks of the Interbasaltic Formation of the Antrim Lava Group suggests a significant hiatus or change in the nature of volcanism during emplacement. These rocks have been the focus of much academic and economic interest for well over a century. Prominent among this early work is that of Cole *et al.*

(1912), who reviewed the economic resources of the aluminium- and iron-rich lateritic horizons that are recorded in the Interbasaltic Formation interval. Workers have variably described the reddened horizons in the Antrim Lava Group as either a ‘laterite’, ‘bole’ or ‘lithomarge’ (Mallet 1881; Cole *et al.* 1912; Eyles 1952; Lyle and Preston 1993; Simms 2021), although not always in a consistent way. Where discussed, the presence of these interbeds was taken as indirect evidence of a subtropical climate, since such a climate is widely associated elsewhere with the production of laterites and lateritic soils (e.g. the red clays of East Africa (Muff 1908); Deccan Traps, India (Ghosh *et al.* 2006)). The presence of extensive and sometimes thick laterites in the Antrim Lava Group, along with the occurrence of commercially viable bauxites (Cole *et al.* 1912), implied formation under extended periods of weathering, which would be required to transform the original basalt lavas and other volcanic products from parent rock to weathered deposits.

## Antrim Lava Group volcanism



**Fig. 1.** Continued. (b) lithological sections of the studied boreholes and field locations.

Here, we have applied the generic term ‘interbed’ throughout the Antrim Lava Group to refer to any lithological unit that was formed or deposited during periods of quiescence between episodes of effusive volcanism, including deep weathering and the onset of soil formation and/or lateritization. Additionally, we have avoided using the terms ‘interbasaltic’ or ‘intra-basaltic’ to describe these strata in the same manner as some previous NAIP studies (e.g. Jolley 1997; Passey and Jolley 2009; Williamson and Bell 2012) as their use here could cause confusion with the Interbasaltic Formation stratigraphic unit of the Antrim Lava Group.

A number of volcanic and sedimentary rock successions are broadly coeval with the well-developed interbed horizons of the late Lower Basalt Formation and Interbasaltic Formation; specifically intermediate lavas and intrusives (Patterson and Mitchell 1955; Walker 1959; Lyle and Thompson 1983) and acidic volcanic centres such as the Tardree Rhyolite Complex (Old 1975; Ganerød *et al.* 2011) and the rhyolitic centre identified by Lonmin borehole NIRE 01/08-0001 (Fig. 1a) which proved 145.3 m vertical thickness of porphyritic and tuffaceous rhyolite under 17 m of overburden. These varied lithologies occur above, between and below the often columnar jointed lava flows of the Causeway Tholeiite Member (Eyles 1950; Lyle 2000) and throughout the Antrim Lava Group. This heterolithic succession suggests formation, either by weathering or sedimentary processes, over an extended time period in varied environments. Examining the record of spatial and temporal environmental change within the uppermost Lower Basalt Formation and the Interbasaltic Formation helps constrain the dominant lava field processes and tempo of eruptive activity. Environmental indicators aid with the identification and interpretation of interbeds, allowing some determination of eruptive hiatuses across the plateau, as well as providing a sense of their duration. Identifying the locality and duration of these hiatuses helps to determine whether these are local and asynchronous features, or consistent with dominant vent positions and their migration. Timescale information from both weathering patterns and environmental or depositional reconstructions also provides a route to evaluating the overall rate of lava emplacement in the Antrim Lava Group.

As mentioned above, the terms laterite, lateritic, lithomarge and bole have been widely used to describe interbeds (Eyles 1952; Patterson and Mitchell 1955; Old 1975; Hill *et al.* 2000, 2001) as well as in the wider NAIP (Bell *et al.* 1996), although not always consistently. These terms allude to the composition and method of deposition or formation of the strata, which may include both sediment input and *in situ* weathering, or a combination thereof. Applied to the Antrim Lava Group, the term

'lithomarge' refers to an advanced stage of weathering in the sequence; basalt → saprolite → lithomarge → laterite → duricrust (Hill *et al.* 2001). Early workers were divided as to the nature of formation of the red interbeds of Antrim; some argued that they were lacustrine in origin (Hull 1874; Mallet 1881; Cole *et al.* 1912), noting the presence of plant remains as additional evidence for this (Tate and Holden 1870). Other workers saw them as advanced palaeosol artefacts, e.g. Muff (1908) compared the red bole interbeds of Antrim with the 'red clay' of East Africa (Kenya), claiming them to be identical at outcrop and very similar in chemistry. However, those 'red clay' soils were forming on sloping land surfaces where they were experiencing 'alternate soaking by rain and [drying by] solar evaporation' (Muff 1908, p. 52), and since lakes cannot form on a sloping topography some other mechanism is suggested. The point at which the laterite, lithomarge and bole horizons of Antrim were accepted as being indicative of a subtropical weathering process is unclear, but the red interbeds of the Antrim Lava Group have mostly been interpreted as deriving from a subtropical climate (e.g. Mallet 1881; Cole *et al.* 1912; Scrivenor 1937; Eyles 1952; Evans *et al.* 1973; Lyle 1988; Lyle and Preston 1993; Hill *et al.* 2000; Simms 2021).

The interbeds found throughout the Antrim Lava Group are key to understanding the palaeoenvironmental conditions, how those environments were established and impacted by volcanism, and the tempo of volcanic activity, because they can provide information about the duration and relative timing of periods of quiescence. Here, we focus particularly on two interbeds of the Interbasaltic Formation revealed at Ross's Quarry and combine these findings with observations from other interbeds across the Antrim Plateau (principally within the Interbasaltic Formation and adjacent strata, e.g. the Port na Spaniagh Member of the Lower Basalt Formation) (Simms 2021; Fig. 1b). Within the NAIP, this wide range of lithotypes formed or deposited during an eruptive hiatus is seemingly a unique feature of the Antrim Lava Group. It also provides an opportunity to elucidate the range of environmental variation, the pace of environmental change and the wider impacts of this eruptive hiatus early in the formation of the NAIP.

## Methods

### Lithology

Interbed exposures and cored sections of the Interbasaltic Formation were selected for this study from sites across the extent of the Antrim Lava Group. For each exposure or borehole, the lithologies present were recorded in graphic logs, which provided the basis for further sampling. For field sampling

of exposures, the surface of the interbeds were cleaned to remove the weathered, uneven outer face. For interbeds of sedimentary origin, a small steel trowel was then used to excavate samples from the main sedimentary subunits. Between samples, all equipment was washed clean using fresh mains tap water to remove soil and sediment and thereby minimize the risk of cross contamination.

Continuous cores from four boreholes penetrating the Interbasaltic Formation were logged for lithology and are included in this study (NIRE 02/08-0001, NIRE 03/08-0001, NIRE 09/08-0001 and NIRE 09/08-0002) (Fig. 1a). These are part of a total of 19 boreholes comprising over 8.5 km of core, drilled by Lonmin (NI) Ltd. and deposited with the Geological Survey of Northern Ireland (GSNI). Along with the cores, datasets of portable X-Ray Fluorescence (pXRF) geochemistry and magnetic susceptibility data were also donated to the GSNI and made available to the authors.

### Basalt weathering depth and interbed thickness/character

Lonmin NIRE borehole log records were investigated for detailed log information on the presence of vesicles and amygdalae, as well as depth of weathering measured from flow tops. By examining and processing these data we were able to identify flow crusts and calculate depth of weathering through the flow tops and into the flow cores.

Petrological and palynological examination of interbeds within the NIRE borehole core samples and field exposures was carried out to determine their lithology, depositional environment and catchment ecology.

### Palynology laboratory processing

Samples from outcrop sections and core were selected based on lithology, sampling at 10 cm intervals at outcrop where possible. The lithologies of interest were identified between lava flows, appearing variously as sediments, lignitic material, volcanoclastic tuffs, palaeosols and other interbeds situated between lava flows. These lithologies were sampled before undertaking detailed identification in order to minimize the risk of sampling bias. Both exposure and borehole core samples were prepared using the standard techniques detailed below.

First, rock material was broken down to sub-4 mm size fragments and then demineralized by digestion in hydrofluoric acid. Residues were boiled in 40% hydrochloric acid to remove calcium fluoride precipitate. Residues were sieved through a nylon 7 µm mesh and subsequently treated with dilute 40% nitric acid to remove pyrite. Where necessary, samples were



subjected to heavy liquid separation using sodium polytungstate ( $3\text{Na}_2\text{WO}_4 \cdot 9\text{WO}_3$ ) at a specific gravity of 2.2. The resultant residues were strewn mounted on glass microscope slides using a permanent epoxy mounting medium and analysed using an Olympus BX53 transmitted light microscope. Counts of >200 palynomorphs per sample were taken where possible, all specimens within the strew mounts being recorded in depauperate samples.

Because of the complexity of some of the palynofloras recovered from the Interbasaltic Formation, specific taxa were targeted for more detailed analysis using a scanning electron microscope (SEM). Strew mounts were made of the selected residues, suspended in glycerine. Selected palynomorphs were picked out from the residue using an eyelash picking tool and concentrated in a small blob of glycerine. Transmitted light photographs of these specimens were then taken as a record of their identity (Fig. 2) and the specimens transferred to SEM stubs following the methods of Halbritter *et al.* (2018). SEM was conducted in the Aberdeen Centre for Electron Microscopy, Analysis and Characterization (ACEMAC) facility at the University of Aberdeen using a Carl Zeiss 'GeminiSEM 300 VP' equipped with Deben 'Centaurus CL' detector, an Oxford Instruments NanoAnalysis Xmax80 Energy Dispersive Spectroscopy (EDS) detector and AZtec software suite. Prior to electron microscopy at ACEMAC, the stubs were coated with gold–palladium (Au–Pd) 80/20 in a sputter coater. Imaging was conducted with low accelerating voltages with the secondary electron detector (SE2) and an InLens secondary electron detector for higher magnification images. The acceleration voltage used was 5 kv with a working distance of ~ 6 mm.

### Statistical data analysis

Because of the complexity of the dataset derived from the principal study sections, an initial statistical analysis was undertaken to determine the overall characteristics of the data. This was followed by a multivariate statistical analysis to identify the main trends in the data and simplify its presentation (Hill and Gauch 1980). Following data normalization and reduction to remove rare or singleton taxa, Detrended Correspondence Analysis (DCA) was undertaken (Hill 1979; Hill and Gauch 1980; Ter Braak 1986). DCA arranges data along two principal axes which represent variables such as environmental factors. The eigenvalues associated with each axis reflect the extent to which each axis influences the data (Ramette 2007).

### pXRF analysis

Existing pXRF analysis of all cores held by GSNI, and new analyses of lithologies of interest, were

obtained using an Olympus Vanta M Series Delta Premium model with a rhodium anode tube. The pXRF data inherited by GSNI with the core samples were taken by Lonmin staff at set intervals, e.g. 1 m, 2 m, rather than by geological unit or feature. Lithologies of research interest were often missed by this method due to being relatively thin, hence the need to re-analyse certain specific horizons of NIRE borehole core samples by pXRF.

All new analyses were obtained by placing samples within an Olympus Vanta workstation for analysis. Individual readings were taken over a 2-minute count time. Beam 1 (<40 kV) ran for 60 s, then beam 2 (<10 kV) ran for another 60 s.

Geochemical data generated using a handheld portable X-Ray Fluorescence tool (pXRF) were examined to identify geochemical trends among and between lava-flow packages, as well as to help identify interbeds and weathered horizons when core samples could not be viewed in person. In case of the latter, pXRF data already held by GSNI were used.

In order to both calibrate and ascertain reliability, pXRF data values were compared with geochemical results generated by Wavelength Dispersive X-Ray Fluorescence (WD-XRF) methods on identical samples. This process revealed that while the absolute values generated by pXRF tended to be unreliable (assuming WD-XRF values are more accurate and precise), the trends of element ratios used for identifying weathered horizons and interbeds (e.g. barium/strontium) were consistently similar to those produced by WD-XRF data.

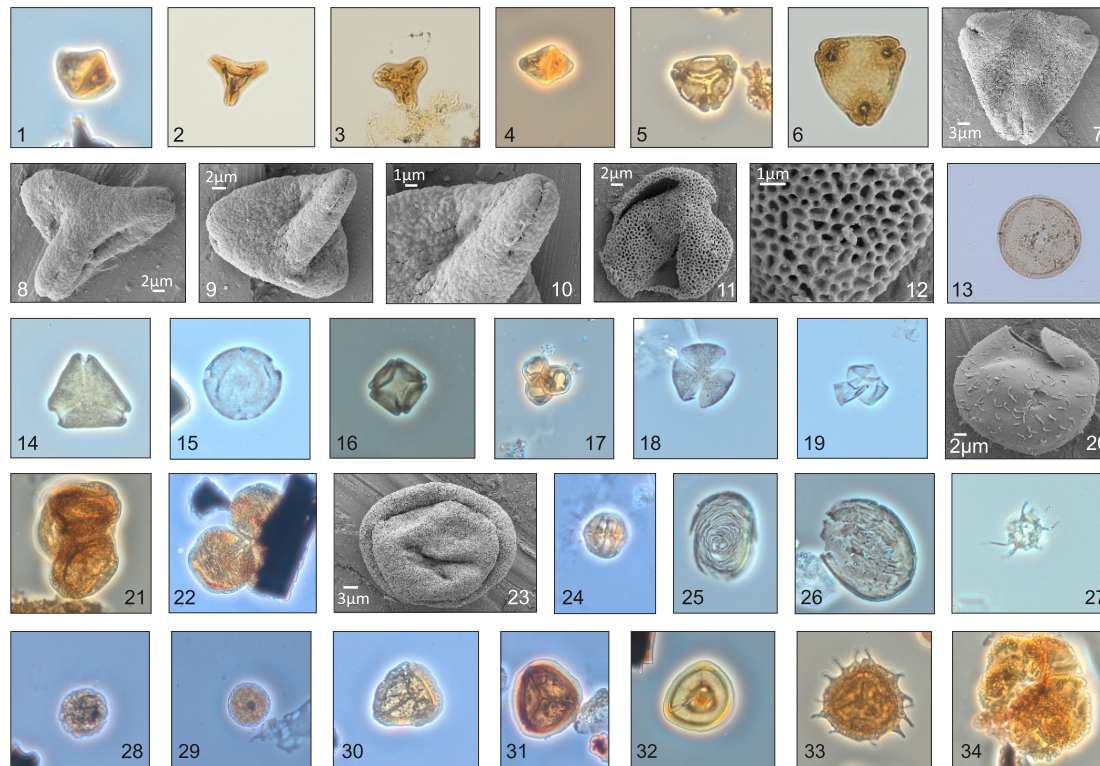
One key drawback of pXRF analysis for this application is that sodium cannot be detected, and that magnesium values above 3000 ppm are unreliable.

Additionally, pXRF data held by GSNI only had analyses for silicon, magnesium and aluminium in 2 of the 13 boreholes.

### pXRF geochemical data usage

The barium (Ba) and strontium (Sr) ratio Ba/Sr is used as a proxy in this study. While soluble, barium has a tendency to adsorb onto clay minerals and so its resulting mobility is reduced in weathering and soil conditions. Strontium has a smaller ionic radius and is highly mobile in the weathering environment. In this regard, the ratio of Ba to Sr represents a proxy for weathering intensity (Price *et al.* 1991; Babechuk *et al.* 2014).

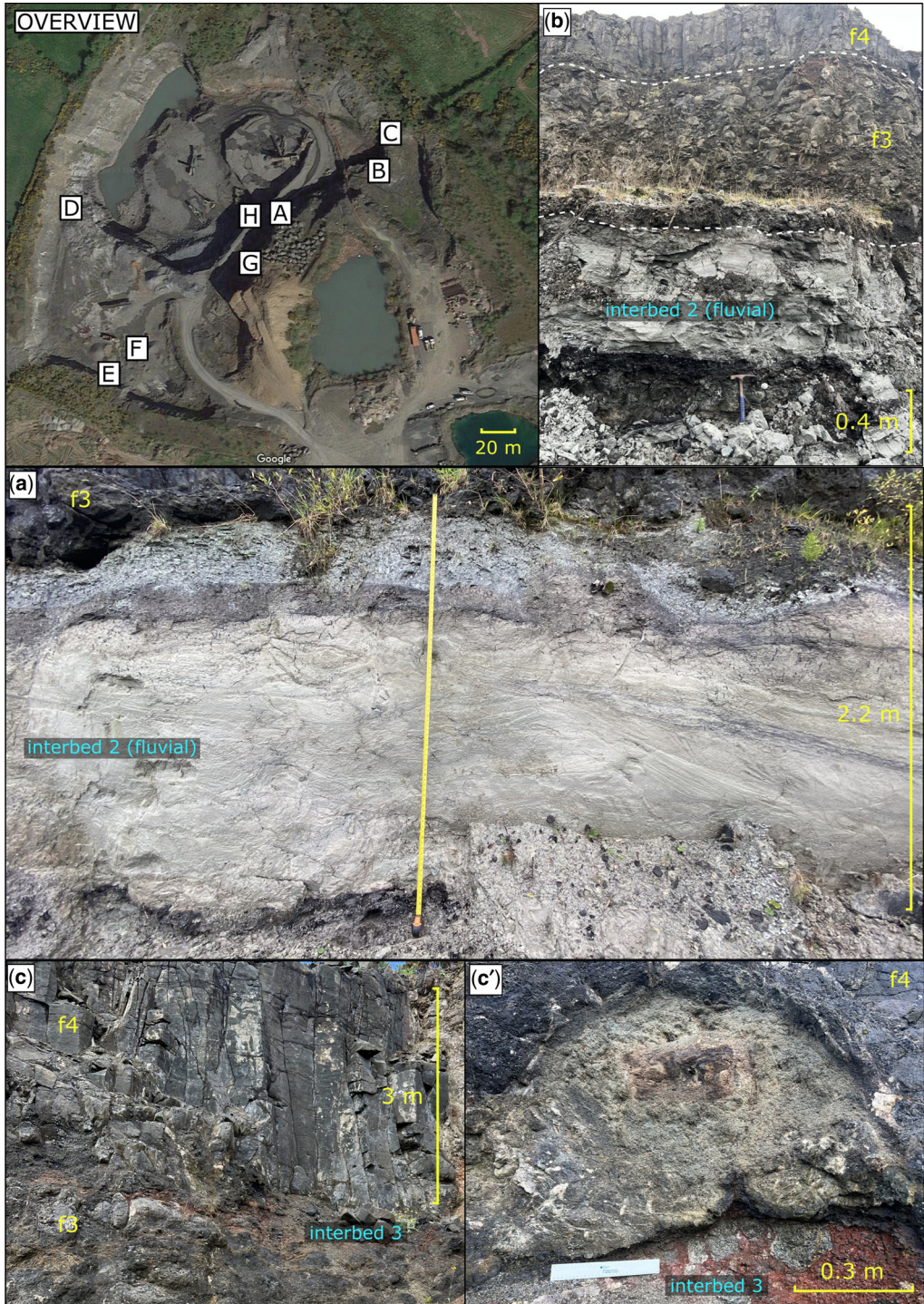
Values for lead and zirconium that were measured on borehole cores were also plotted alongside plant ecology group data as peaks in these datasets may indicate the presence of limited thickness acidic tephra in the core (see Results; Figs 4, 5 & 6).



**Fig. 2.** Palynomorphs from the Antrim Lava Group. *Complexipollis* sp. 1) sample LAT005, Clinty Quarry, K39/1; 2) 09/08-0002 161 m U41/2; 3) 09/08-0002, 167.85 m Q41; 4) Ross's 207, M35; 5) *Nudopollis terminalis* 09/08-02, 132.5 m, T34/2. *Trudopollis hammenii*, 6) 09/08-0002 109 m, C39/4, 7) SEM photograph, Ross's. *Complexipollis* sp. 8-10) Ross's, ten showing high magnification of the colpate aperture in 9. 10, 11) *Tricolpites of hians*, 09/08-0002, 131 m, 11, showing high magnification view of Platanaceae type reticulum. *Arcella* sp. testate amoeba from Ross's 222, X42/2. 12) *Cupaneidites* sp. (Loranthaceae), 09/08-0001, 254.25 m, R48/1. *Caryapollenites circulus*, 09/08-0002 109 m, Q27. 13) *Alnipollenites verus*, Ross's 205, U21. 14) *Ericipites ericius* 09/08-0002, 112 m, Q31/1. 15) *Tricolpites hians*, 09/08-0002 109 m, L33/1. 16) *Cupuliferoidaepollenites liblarensis* 09/08-0002, 109 m, V43/4. 17) *Acanthomorph acritarch*, SEM photograph, 09/08-0002, 133 m. 18) *Classopollis* spp., characteristic cluster, Ross's 206, G31/1, 17) *Classopollis* spp., Ross's 208, J41/3. 18) *Classopollis* spp., SEM photograph showing single sulcus. Note the thick, ornamented wall, Ross's. *Pentacolporites* sp. Ross's 212, L39/3. 25) *Concentricyastes* sp. 09/08-0002, 109 m, N46. 26) *Concentricyastes* sp., 09/08-0002, 110 m, R32/3. 27) *Micrhystridium stellatum*, Ross's 206, W46/4. 28, 29) *Corrusporis* sp. Ross's 209, G43/4. Ballycastle 208, F31/1. 30) *Stereisporites (Dicyclosporites)* sp. Ross's 208, M23/4. 31) *Stereisporites (Dicyclosporites)* sp. Ross's 210, N18. 32) *Stereisporites (Distamulisporis)* sp. Ross's 0.15, N17. 33) *Echinosporis cycloides* Ross's 207, L23. 34) *Botryococcus braunii*, Ross's 206, M47/4.

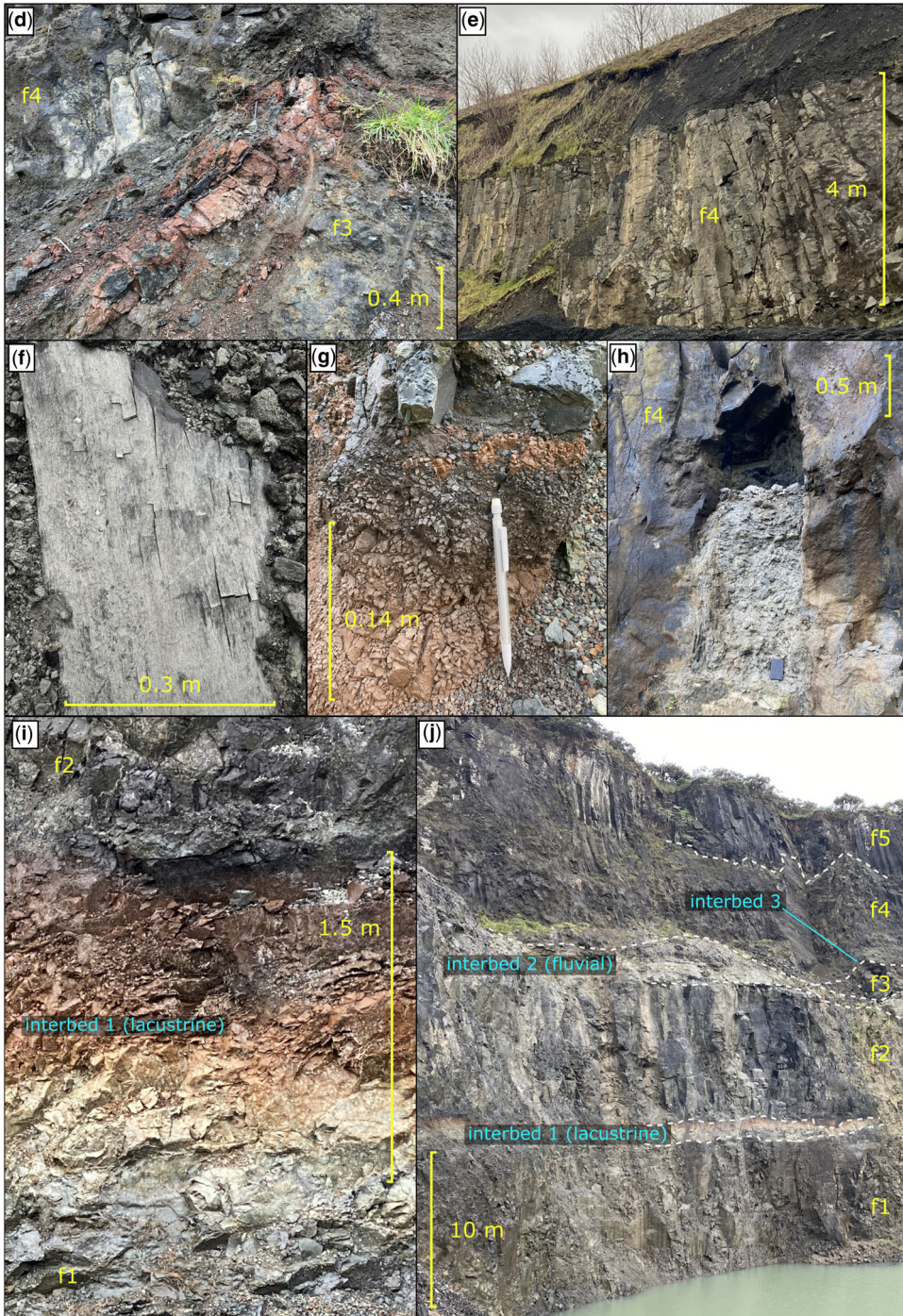


Antrim Lava Group volcanism



**Fig. 3.** Field photos from Ross's Quarry. OVERVIEW. Aerial view of the quarry and locations of images. (a) Interbed 2 detail. (b) Interbed 2 setting below subsequent lava flows. (c) Interbed 3 between lava flows f3 and f4 (showing weak columnar jointing). (c') Fossilized fallen tree trunk on interbed 3 surrounded by f4 lava flow.





**Fig. 3.** *Continued.* (d) Fossilized root structures (within interbed 3) between f3 and f4 lava flows. (e) Well-developed columnar jointing in flow f4. (f) Example of the well-preserved fossilized wood found within interbed 2 (although not found *in situ*). (g) Detail of interbed 1. (h) Detail of hollow structure located within flow f4, possibly evidence of sediment ploughing or cavity infill where once a tree had been. (i) Detail of interbed 1 between flows f1 and f2. (j) Section of the NW wall of the quarry detailing the stratigraphy.



## Magnetic susceptibility data usage

Liu *et al.* (1988) compared Ba/Sr ratios with magnetic susceptibility values of interglacial loess profiles and found remarkable similarities in the plotted trends. In Figures 4 and 5 we have plotted magnetic susceptibility values alongside plant ecology group data and Ba/Sr ratios to provide another proxy for the climate and weathering while the lavas were subaerially exposed. Additionally, peaks in magnetic susceptibility, e.g. visible towards the top of section in Figure 4, may also point toward the presence of thin basaltic ash deposits in the core.

## Materials

Analysis of the depositional history of the Interbasaltic Formation north of the Tow Valley Fault was based around three key sections: an operational quarry (Ross's Quarry) 4 km SW from Ballycastle, and two cored boreholes NIRE 09/08-0001 and NIRE 09/08-0002 (Fig. 1a). Additional samples were incorporated from previously sampled exposures at Craighulliar Quarry and the Giant's Causeway/Causeway Coast (Jolley 1997), as well as from cored boreholes NIRE 02/08-0001 and NIRE 03/08-0001 situated to the south of the fault (Fig. 1a, Table 1).

### Ross's Quarry

Ross's Quarry was visited in October 2020, at which time two interbeds were exposed: interbed 1 and a younger interbed 2, with thicknesses of 1.5 m and 2.5 m, respectively. The lithology of sedimentary interbed 2 is presented in Supplementary data 1.

The geology exposed at Ross's Quarry in the Craignagat townland consists of basalts and interbeds of the Antrim Lava Group (Fig. 3a–j, but identifying the specific formations and members present in the quarry is difficult. The lower two flows (f1, f2) are laterally extensive, massive, thick (9–10 m), aphyric and lacking significant internal structure aside from jointing. The three upper flows (f3, f4 & f5) are of varying thickness at outcrop, contain phenocrysts of olivine, and are physically quite different; the thickness of f3 varies significantly across the site, pinching out in places, and displays disordered structures, not clearly identified but reminiscent of pillow lavas. Lava flows f4 and f5 show reasonably well-developed columnar jointing and compared to f3 have a more consistent thickness. In Figure 2, plate C shows f3 and f4, plate E shows f4.

### Craighulliar Quarry

The Port na Spaniagh Member of the Lower Basalt Formation and the Causeway Tholeiite Member of

the Interbasaltic Formation (Fig. 1a) crop out at this repurposed quarry (now a landfill site). Here, a deep red silty clay palaeosol with a carbonaceous/lignitic claystone horizon has been attributed to the Port na Spaniagh Member (the Lower Interbasaltic Bed of Patterson and Mitchell 1955; Fig. 1b). It is overlain by columnar jointed flows mapped as the Causeway Tholeiite Member, with evidence of the lava ploughing into the underlying palaeosol interbed and filled topographic lows (Wilson 1965). The oldest of these flows has a well-preserved pāhoehoe flow top, itself being overlain by a lignitic sedimentary interbed of uncertain thickness (due to a cover of thick vegetation). This interbed is overlain by a second columnar jointed tholeiitic basalt flow which crops out at the top of the hill within the Craighulliar landfill site.

### Giant's Causeway

The lavas exposed along Causeway Head between Portnaboe and Port Noffler bays have recently been mapped at high resolution by Simms (2021). Starting at sea level, Simms identified five flows of the Lower Basalt Formation, the uppermost of which weathered to form the sediments and lateritic palaeosol of the Port na Spaniagh Member prior to the eruption and emplacement of the Causeway Tholeiite Member flows. Two flows of the Causeway Tholeiite Member are exposed above this. The structural relationship between exposures on the foreshore and those in the cliffs of Causeway Head remain debated.

### Boreholes

Horizons interpreted as being of the Interbasaltic Formation are visible in core retrieved from the NIRE boreholes in this study. NIRE 09/08-0001 was also inspected, however, core from the lower section of this borehole was not available for inspection.

Composite logs were drafted using existing borehole logs provided by GSNI and supplemented by subsequent logging undertaken during fieldwork in October 2020 and October 2021. They are presented in part in Figures 4, 5, 6 and 7. Figure 8 presents selected core examples highlighting the nature of the lava flows as described within this study.

## Results

### Palynology

Twenty eight samples from the interbeds 1 and 2 exposed in the Ross's Quarry succession were collected and analysed for their palynofloras (Fig. 4). This analysis yielded variably diverse palynofloras

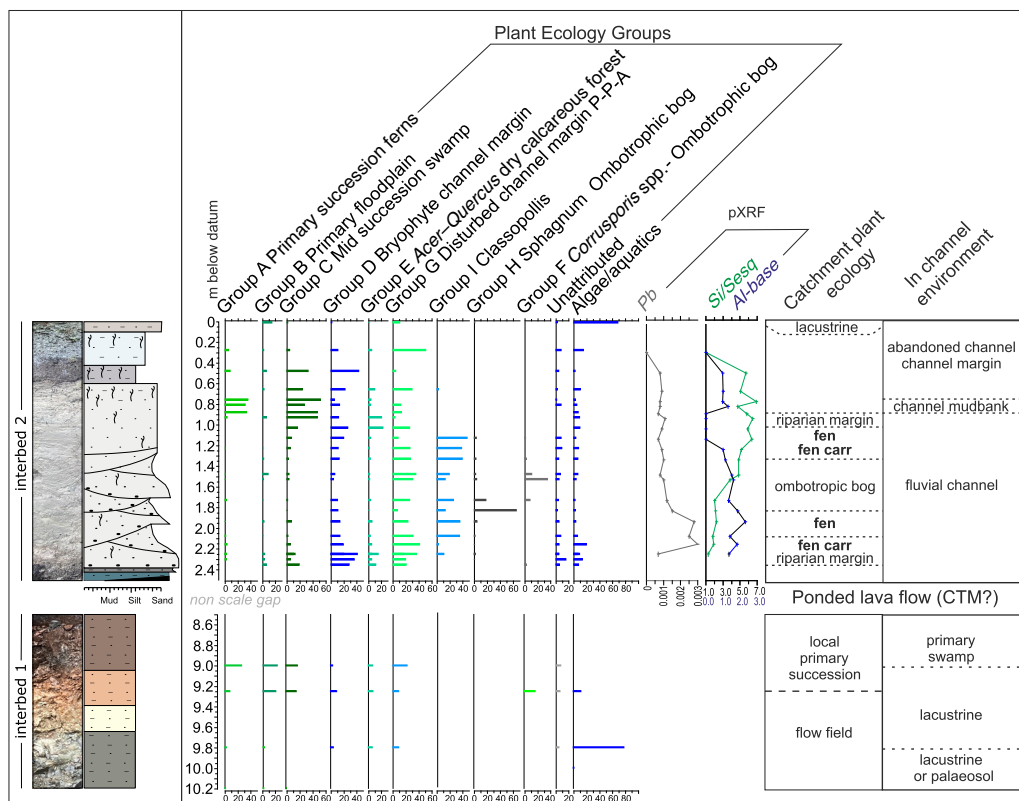
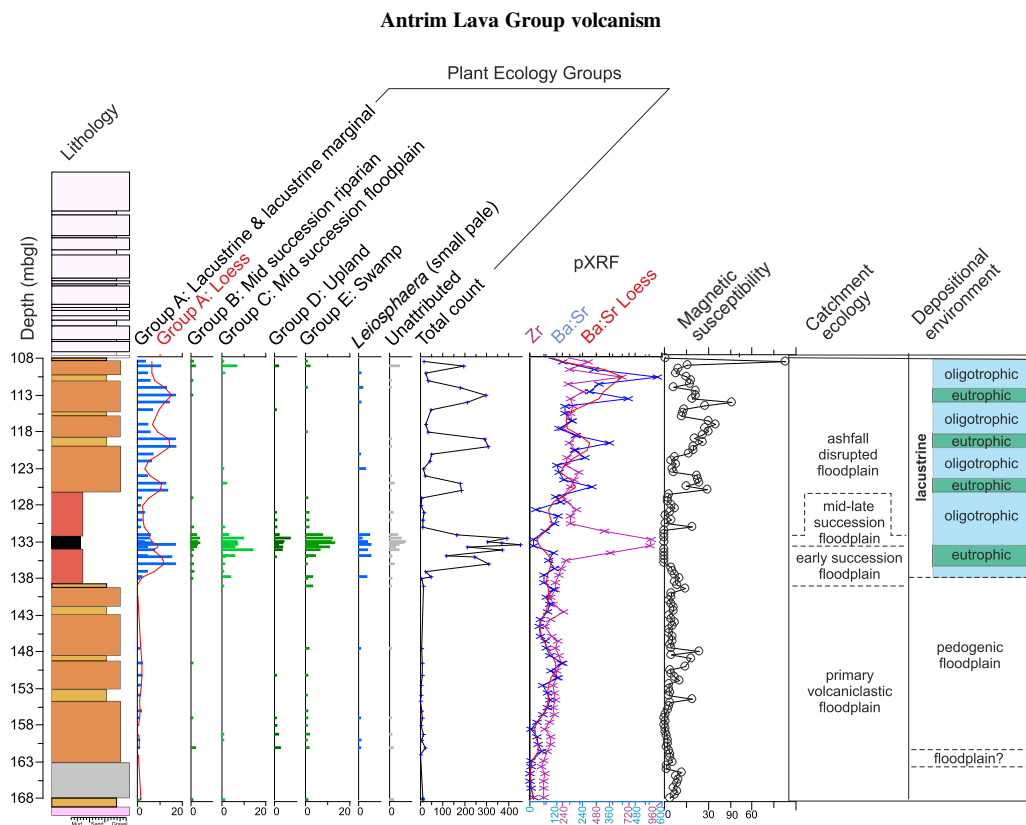


Fig. 4. Ross's Quarry location, lithology and palynofloral communities.

with a total of 115 taxa, mostly comprising pollen and spores. These floras were dominated by taxa derived from the families Sphagnaceae, Polypodiaceae, Cupressaceae, Pinaceae, Betulaceae, Juglandaceae and Hamamelidaceae in assemblages of varying composition (Supplementary data 2). Algal palynomorphs were distributed throughout the Ross's Quarry interbeds succession, occurring in all samples. Recovery of palynomorphs was moderate to high, with two intervals (samples 215–217 and 220–221; Fig. 4) of lower recovery. The lower of these intervals sampled an erosively based coarse sandstone unit, the higher depositional energy probably caused winnowing of palynomorphs (Fig. 4).

Palynofloras recovered from 52 core pieces from borehole NIRE 09/08-0002 were diverse (105 taxa) and revealed stratigraphical variation. The palynofloral assemblages can be divided into three intervals; the oldest occurs within both the youngest interbed within the Lower Basalt Formation and the lowermost Interbasaltic Formation lithologies, separated from each other by a deeply weathered lava flow; the next youngest assemblage occurs in carbonaceous shales and coals of the middle

Interbasaltic Formation; and, finally, the third assemblage occurs within mudstones separated by deeply weathered lavas near the top of the Interbasaltic Formation (Fig. 5). The oldest floras are of low diversity and frequency, containing pine (*Pityosporites* spp.) and swamp cypress (*Taxodiaceae*; *Inaperturopollenites hiatus*) pollen. These taxa are associated with a low frequency, moderately diverse angiosperm pollen flora, bryophyte spores and freshwater algae (Fig. 5, Supplementary data 1). Carbonaceous sediments in the middle part of the Interbasaltic Formation yielded a palynoflora with sub-dominant *Cupuliferoidaepollentites*, *Cupuliferoipollentites* and *Tricolpites* species (Fagaceae). These are associated with common occurrences of other angiosperm pollen including *Nyssapollenites* species (Nyssaceae), *Retitricolpites* species (Platanaceae), Myricaceae type pollen (*Triporopollentites coryloides*), bryophyte spores and variably abundant freshwater algae. The upper part of the Interbasaltic Formation in borehole NIRE 09/08-0002 is characterized by a palynoflora totally dominated by abundant *Botryococcus braunii* (green algae, Chlorophyceae). Only in the uppermost bed of this unit is a moderately



**Fig. 5.** Borehole NIRE 09/08-0002 lithology and palynofloral communities.

diverse higher plant palynoflora recovered, dominated by *Tricolpites* cf. *hians* (Fagaceae), fern spores (*Laevigatosporites haardtii*) and alder type pollen (*Alnipollenites verus*).

Recovery of palynomorphs from borehole NIRE 09/08-0001 is limited, no cores being available below the uppermost few metres of the Interbasaltic Formation (Fig. 6). Samples from this interval yielded palynofloras dominated by fern spores, in particular *Deltoidospora adriennis* and green algae (*Botryococcus braunii*). They also had a low

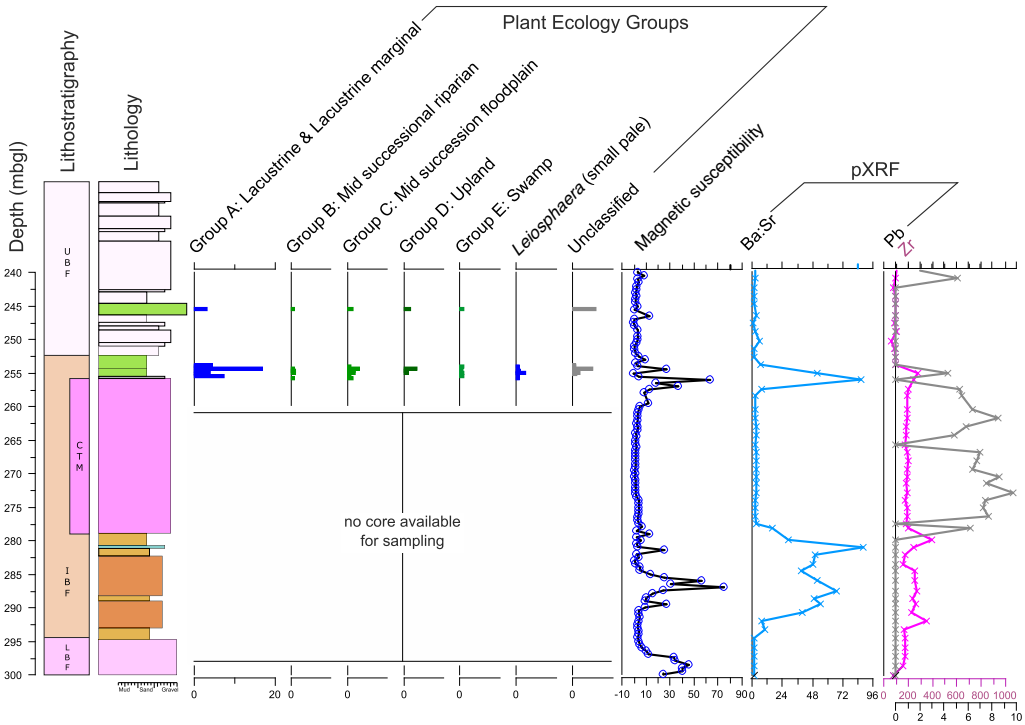
diversity and frequency of angiosperm pollen. A more impoverished palynoflora was also recovered from an interbed within the Upper Basalt Formation, which was dominated by fungal hyphae (Supplementary data 3).

Samples taken from the deeply weathered basalt lavas of the Interbasaltic Formation in boreholes NIRE 02/08-0001 and NIRE 03/08-0001 yielded similar palynofloras, wholly dominated by green algae (Figs 7 & 8). A few scattered occurrences of pollen and spores were noted, an influx of *Retitricolpites retiformis* (Platanaceae) and *Tricolpites* cf. *hians* (Fagaceae) recovered from the lowermost bed of NIRE 02/08-0001.

A more diverse palynoflora was recovered from two thin beds of carbonaceous shales above the oldest lava flow of the Upper Basalt Formation in borehole NIRE 02/08-0001. These palynofloras are dominated by swamp cypress pollen (*Inaperturopollenites hiatus*), sub-dominant bryophyte and pteridophyte spores (*Stereisporites* (*Stereisporites*) *stereoides* and *Deltoidospora adriennis*) and common *Momipites tenuipolus* (Juglandaceae, hickory types). A similar, *M. tenuipolus* rich palynoflora of this type was also recovered from lignites cropping

**Table 1.** List of key localities and Irish Grid references.

Locality	Easting	Northing
Giant's Causeway	292903	444476
Craigahulliar Quarry	287110	438954
Ross's Quarry	308097	438438
NIRE 09/08-0001	294362	434582
NIRE 09/08-0002	290853	434532
NIRE 02/08-0001	316129	412540
NIRE 03/08-0001	326391	406143
NIRE 01/08-0001	306212	417691

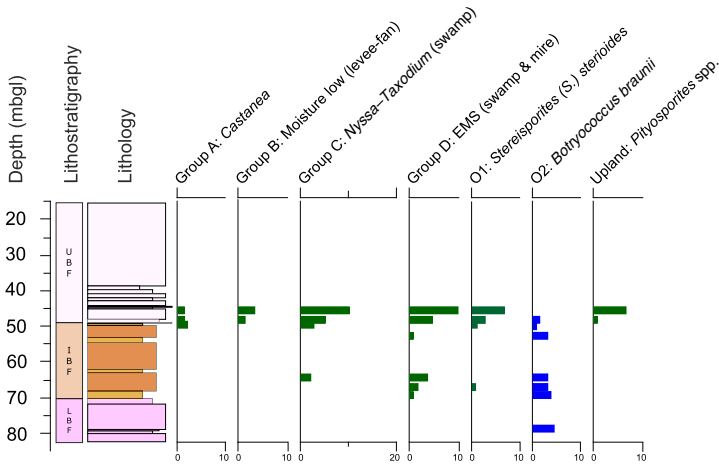


**Fig. 6.** Borehole NIRE 09/08-0001 lithology and palynofloral communities.

out between the two columnar jointed flows mapped as the Causeway Tholeiite Member at Craighulliar Quarry (Fig. 1b; Supplementary data 1).

Additional samples from sedimentary interbeds within the Lower Basalt Formation exposed at Port Noffler to the east of the Giant’s Causeway yielded

palynofloras dominated by swamp cypress pollen (*Inaperturopollentites hiatus*). These were associated with sub-dominant fern spores (*Laevigatosporites haardtii*) and the angiosperm pollen *Retitricolpites retiformis* (Platanaceae) and *Cupuliferoipollentites* species (Fagaceae).



**Fig. 7.** Borehole NIRE 02/08-0001 lithology and palynofloral communities.







**Fig. 9.** Figure highlighting typical features of the Antrim lava pile as seen in NIRE borehole core. (a) Example of a simple pāhoehoe lava flow from within Lower Basalt Formation of the 02 08 0001 borehole showing typical asymmetrical vesicle distribution and oxidation towards the flow top. (b) Example of a compound pāhoehoe lava flow from within the Lower Basalt Formation of the 02 08 0001. (c) Details from the Ballylagan Member of the Interbasaltic Formation highlighting the presence of rubbly flow margins associated with flow margin autobrecciation. (d) Reworked and leached scoriaceous breccia clasts in oxidized matrix. (e) Reworked and deeply altered volcanoclastic breccia with scoriaceous clasts likely reworked from underlying rubbly flow top. (f) Detail of flow top breccia.

from the source material of which it is composed. Red sandstone and claystone units of this character are common in the NAIP (e.g. Passey and Jolley 2009), and while some are formed from pedogenic degradation of basaltic lavas (e.g. Bell *et al.* 1996), many are derived from transported and degraded basaltic volcanoclastic material (e.g. Jolley *et al.* 2022).

### Depositional environments of interbed 2 (Ross's Quarry)

The lowest subunit of interbed 2 is a carbonaceous siltstone passing laterally into lignite deposits including fossilized wood and bark fragments (Fig. 3f). Palynofloras from this interval include common algae, spores derived from a bryophyte-dominated wetland community and riparian associations, indicating deposition in a lacustrine

palaeoenvironment. Cross stratification of the overlying 1.7 m of interbed 2 indicates that it was laid down by a shallow fluvial channel system (Fig. 4). The occurrence of acritarchs, chlorophycean algae, copepod eggs and testate amoebae (*Arcella* spp.) support an interpretation that it was deposited in a fresh to weakly brackish water environment. Occurrences of the acritarchs *Michrystidium* and *Leiofusca* spp. are concordant with deposition in a very low salinity fluvial system with a link to the marine environment. Assemblages of this type have been recorded in tidally influenced fluvial channels in the lava fields of the Faroe Islands Basalt Group (Jolley *et al.* 2022).

Overlying this tidally influenced fluvial channel is a unit of darker silty clays with abundant rhizomatous root structures (Fig. 4). These originate within and at the top of the silty clay bed but penetrate down >30 cm into the underlying cross-bedded

sandstones. Abundant occurrences of the pteridophyte fern spores *Deltoidospora maxoides* and *D. adriennis* in high dominance, low diversity samples (samples 216–219, Fig. 4) from the silty clays indicate that the rhizome structures belong to ferns which likely colonized intra-channel mudbanks.

The 55 cm claystone bed between the top of the silty clays and the overlying basalt lava flow was also penetrated by more infrequent rootlet structures (Fig. 4). The palynoflora from this interval is of lower diversity, but the spore/pollen assemblages are again dominated by *D. adriennis* and *D. maxoides* suggesting that the root structures originated from ferns colonizing the emergent surface of the claystone unit. Occurrences of *Arcella* spp. (testate amoebae), *Botryococcus braunii* (green algae), copepod eggs and *Concentricystes* sp. within this claystone unit indicate that it was deposited in a quiescent freshwater environment. Taken together with only minimal indications of lava–surface water (or wet sediment) interaction at the base of the overlying basalt flow, these data indicate that a low energy channel margin was likely abandoned and colonized by ferns. The fall in base level that this resulted from ensured that the overlying lava flow was able to completely fill and overstep the accommodation space previously occupied by the fluvial system.

### Catchment vegetation ecology

Because interbed 2 was deposited within a fluvial channel system, pollen and spores derived from the catchment area are well preserved. These complex assemblages reflect changes in the plant ecology of the catchment. Because of this complexity, the pollen and spore data were subjected to DCA to express the variability in the dataset on two principal axes. This analysis identified nine groups, of which three were based on single outlying taxa (Supplementary data 2). Multi species groups were named according to the known botanical affinities and environmental tolerances of the taxa included in them (Gruas-Cavaghetto 1977; Jolley *et al.* 2009). The stratigraphical distribution of these DCA groups was plotted against the graphic lithology logs to highlight correspondence between bed units and changes in catchment palaeoecology.

The lowermost sedimentary rocks of interbed 2 (0.2–0.5 m, Fig. 4) were co-dominated by pollen from the true swamp (Group D) and fluvial/fen carr (Group F) communities. Dominated by *Inaperturopollenites hiatus* and *Pityosporites* spp., respectively, this co-dominance of true swamp and fluvial/fen carr groupings is characteristic of fluvial channel facies. Both groups are dominated by pollen from known pollen overproducers (Pinaceae, Cupressaceae), these taxa occurring abundantly in fluvial to shallow marine Paleogene sediments of

the NAIP (Simpson 1961; Jolley 1997; Jolley *et al.* 2021). Evidence of increased influence from a fen carr association along the riparian margin is presented by increased frequencies of the betulaecous pollen *Alnipollenites verus*. Occurring commonly at the base of the cross-bedded sandstone unit (Fig. 4), this fen carr association declines in frequency up-section. This decline is correlated to a change in assemblage character from 0.5 m to 0.65 m, where palynofloras are dominated by *Classopollis* sp. pollen (Group I). The parent plants of these pollen are included in the family Cheirolepidaceae, plants held to become extinct at the Cretaceous–Paleogene boundary. While there is no conclusive evidence that these pollen were reworked from Upper Cretaceous strata in the catchment area, a reworked Ulster White Limestone source within the catchment area appears likely. It is notable that the common occurrences of *Classopollis* pollen do not correspond to lithofacies changes in the exposure (Figs 3 & 4), suggesting a catchment control on their occurrence.

Overlying these transported fen carr and fen assemblages, is an abrupt shift at 1.725 m (Fig. 4), to spores derived from a Sphagnaceae ombrotrophic bog, dominated by *Stereisporites* (*Dicyclosporites*) spp. The total dominance of this taxon is indicative of the development of a raised, ombrotrophic bog. Further development of the bog is marked by the replacement of Sphagnaceae spores by abundant bryophyte spores (*Corrusporis* spp.). These spores wholly dominated the transported in-channel assemblage sampled at 1.05 m, marking the upper limit of a base-level fall trend within the catchment (Fig. 4). Overlying the ombrotrophic bog associations, an abrupt assemblage change was recorded at 1.425 m (Fig. 4), reverting to dominance by fluvial/fen carr community (groups F, G). There is no apparent major corresponding change in the sedimentary structures of interbed 2 at this level, but this assemblage change signifies a shift in the catchment from ombrotrophic bog to riparian fen carr. This is associated with an influx of copepod eggs, occurring with *Micrhystridium fragile*, *M. stellatum* and a dinocyst fragment indicating a weak brackish water penetration into the fluvially dominated channel system.

At 1.025 m (Fig. 4) the fen community is abruptly terminated, reflecting the incision of a separate cross-bedded channel (Fig. 3). Palynofloras derived from these coarser channel sandstones are of lower diversity and abundance. The palynoflora was initially dominated by an in-channel taphonomic grouping of transported taxa (groups D and E), which is rapidly replaced by mid-successional community taxa (Group C). This largely pteridophyte spore dominated group includes *Deltoidospora adriennis*, a taxon associated with crevasse splay and inter-channel sand bank colonization.

Occurrences of abundant *D. adriennis* continued to dominate the mid-successional community (Group C) recovered from the overlying rhizomatous silty clays (1.77–1.83 m). Within this unit, assemblage diversity fell and abundant *Deltoidospora maxoides* was recorded. The dual dominance of polypodiaceous and schizaceous ferns in this silty clay unit indicates deposition as an inter-channel emergent sandbank. This emergent sandbank deposit is overlain by claystones with poor palynofloras which are essentially similar to those recovered from the silty clays below. Taken together with the fine grain size and laminar bedding, this unit can be interpreted as being deposited in a low energy channel marginal area, or abandoned channel.

The uppermost 1 cm unit of interbed 2 is significantly different, being marked by an influx of fresh water palynomorphs at 2.3 m, including testate amoebae and *Concentricystes* sp. (Zygnemataceae; Grenfell 1995). Pollen and spores occur in a low diversity and high dominance assemblage with high frequencies of transported *Pityosporites* spp. (Pinaceae, Group G: Riparian/Channel. Transported Pinaceae pollen and the common occurrence of mixed freshwater–brackish algae indicate deposition of this interval in a fluviially dominated channel. Although rootlets penetrate this bed, there is no evidence for a horizon with rootlets at the top of interbed 2. The non-invasive lower surface of the overlying basalt lava flow indicates that the underlying sediments were probably a dry surface and may have been partly lithified or consolidated. It could be expected that the flooding event at 2.3 m would be overlain by sedimentary rocks deposited during a falling base level, like those seen in the two preceding cycles (Fig. 4). The absence of such deposits at the top of interbed 2 could potentially reflect (a) thermal uplift and landscape rejuvenation associated with eruption of the overlying Upper Basalt Formation lava flows, (b) the lowering of hydrological and hydrogeological water levels due to fracture propagation and expansion associated with thermal uplift, or (c) some other mechanism or a combination of all of these.

### Depositional environment, borehole NIRE 09/08-0002

The majority of the palynofloras recovered from the Interbasaltic Formation of borehole NIRE 09/08-0002 contained algae, indicating that the deposits originated in a succession of freshwater lacustrine environments. The lower unit of the Interbasaltic Formation contained a sparse palynoflora, but with no evidence of degradation of the organic debris. Frequent occurrences of *Pityosporites* spp. from 161 to 157 mbgl are associated with a low frequency flora, including early mid-successional angiosperm pollen

and bryophyte spores. Influxes of *Pityosporites* spp. in lacustrine deposits are normally a reflection of wind transport or fluvial input, the pollen being readily transported from an upland or topographically raised source area. The low frequency of other pollen and the numbers of *Stereisporites* species (bryophyte) indicate that the catchment area was only poorly vegetated or barren. Ba/Sr ratio trends derived from pXRF data indicate that the rocks comprising the lower interval of the Interbasaltic Formation in this borehole were moderately weathered. Ratios for interbeds and lavas from both the Lower Basalt Formation and the overlying Upper Basalt Formation flows are typically <3. From the base of the lower interval of the Interbasaltic Formation, Ba/Sr increases to 146.5 (149.5 m), remaining at comparable levels until within the oldest part of the upper Interbasaltic Formation unit (Fig. 5). This includes the middle section of the Interbasaltic Formation where palynofloras are diverse and abundant.

While the increase in Ba/Sr within the upper part of the Interbasaltic Formation probably reflects increased weathering of the sediment, it does not demonstrate that this weathering happened *in situ*. The presence of freshwater algae in this interval suggests deposition in ephemeral lakes or floodplains with little surrounding vegetation. Other examples from the Faroe Islands Basalt Group (Passey and Jolley 2009; Jolley *et al.* 2022) are interpreted as accumulations of redeposited volcanic ash and erosion products from adjacent flow fields. In addition, two prominent increases in magnetic susceptibility (Fig. 5) could potentially reflect the presence of airfall ash layers (Rosenthal *et al.* 2018). The most probable interpretation is that this interval represents a complex period of slow vegetation recovery after cessation of Lower Basalt Formation eruptions, and a disturbed floodplain environment in which ashfall may have reset the vegetation communities within the area (Ebinghaus *et al.* 2015).

### Depositional environment, borehole 09/08-0001

There are limited data from this borehole, with samples only being available from an interbed above the Causeway Tholeiite Member lavas. In this interbed, abundant *Deltoidospora adriennis*, a taxon associated with crevasse splays and channel margins, dominated an early succession flora. Abundant lacustrine and lacustrine marginal palynomorphs indicate that these spores were deposited in ephemeral lakes (Fig. 6). In contrast to the extensively weathered lavas and late successional swamp communities identified in the nearby borehole NIRE 09/08-0002, the flora recovered in NIRE 09/08-0001 indicates only a short-term eruption hiatus.



## Depositional environment, boreholes NIRE 02/08-0001 and NIRE 03/08-0001

The Interbasaltic Formation penetrated by these two cored boreholes is composed of deeply weathered basalts. Short intervals where green algae are recorded commonly indicate that these weathered flow fields periodically hosted lakes. The low frequency of higher plant pollen is probably partly attributable to extensive oxidation of organic matter during this long period of slow sedimentation and weathering. This does not explain the low frequencies of pollen and spores in samples with common algal preservation. This can be attributed to volcanic disturbance of the catchment vegetation similar to that observed in the Columbia River Large Igneous Province (Ebinghaus *et al.* 2015), or alternatively that the interbed sediments were deposited rapidly in ephemeral lakes.

The flora recovered from interbeds in the lowermost Upper Basalt Formation of borehole NIRE 02/08-0001 were sourced from a well-established, transitional swamp, mid-successional floral community. This is closely comparable to the *Momipites tenuipolus* dominated palynoflora from the interbed within the Causeway Tholeiite Member at Craighulliar Quarry, which was deposited in a similar, transitional swamp environment.

## Discussion

### Exceptional ecosystem

There are numerous palynofloral records from acid swamps within the NAIP, with communities ranging from lacustrine and riparian to transitional and true swamp (e.g. Jolley 1997; Schofield and Jolley 2013). These are characterized by abundant pteridophyte fern spores, often *Laevigatosporites haardtii* or *Deltoidospora* species derived from primary colonizer ferns (e.g. Figs 4 & 6; Jolley *et al.* 2009). In early to mid-seral successional states, swamp palynofloras include juglandaceous angiosperm pollen (e.g. *Caryapollenites* species, *Momipites* species, *Platycaryapollenites* species), alongside *Cupuliferoipollenites* species (derived from Fagaceae) and Normapolles pollen, probably from herbaceous plants (e.g. Figs 6 & 7; Daly and Jolley 2015). Recorded diversities are high with mid-succession communities being well-developed in floodplain swamp community mosaics. Plant macrofossil assemblages of similar composition, dominated by *Glyptostrobus* (pollen taxon *Inaperturopollenites*) and *Cupuliferites* (related to several *Favitricolporites*, *Tricolpites* and *Cupuliferoipollenites* species) have been recorded from Glenarm Quarry E 146326, N 570692 in

nineteenth century fossil collections (Boulter and Kvacek 1989).

Climax or late seral succession vegetation is mostly preserved as Cupressaceae-dominated lowland swamp, often partly as a coastal ecosystem (e.g. Jolley *et al.* 2009). An alternative to lowland swamp cypress (Cupressaceae, *Taxodium* or *Metasequoia*) late succession communities have been recorded more rarely as upland fern–conifer forest within the basalt lava fields of the Skye Main Lava Series (Jolley 1997). Macrofloras of comparable composition have been recorded from Ballypallady (Fig. 1) and Glenarm Quarries (E 146326, N 570692) by Gardner (1883–86), the flora being interpreted as being derived from a mixed mesophytic forest by Boulter and Kvacek (1989) in their review of museum specimens.

In the majority of the records of swamp vegetation communities both within and immediately preceding a period of active volcanism, water draining into the catchment may have been dominantly acidic. Macronutrient availability would have been highly variable in these settings (Jolley *et al.* 2008), and only sites proximal to contemporary volcanism would have experienced significant eutrophication. While this is true of interbasaltic sedimentary depositional systems, the more limited record of plant ecosystems deposited in environments immediately prior to the onset of volcanism also follows this pattern. Examples from sub-basaltic strata in the NAIP (Mull lava field, Jolley *et al.* 2008; Faroe Islands Basalt Group, Passey and Jolley 2009, Faroe–Shetland Basin, Schofield and Jolley 2013; Jolley *et al.* 2021) show limitation of seral succession by the onset of volcanism but are essentially all swamp-dominated ecosystems.

An exception to these acidic swamp ecosystems was identified from the palynofloras of interbed 2, which point to a significant influence on the pH of groundwater chemistry within the catchment area (Wheeler and Proctor 2000). The palynoflora of interbed 2 represents the only known published record of a fen ecosystem in the Paleocene of the NE Atlantic margin. The common occurrence of *Alnipollenites verus* in sample 205 (at 2.155 m below datum, Fig. 4) marks the establishment of an alder fen carr community within the catchment. In addition to confirming a falling base level during deposition of the lower 1 m of interbed 2, the transition from channel to fen carr and succeeding fen communities identifies the necessity for a higher pH groundwater (Godwin *et al.* 1974; Wheeler and Proctor 2000).

Although the current land surface of the Ballycastle region is covered by extensive basaltic lavas, the fen ecosystem indicates that this area drained a landscape which was at least in part formed by the Late Cretaceous Ulster White Limestone Group

(Fig. 1a), of which the remaining extent is now almost entirely covered by the Antrim Lava Group.

The subsequent gradation of the oldest identified fen community into sphagnum bog and subsequently a bryophyte-dominated raised ombrotrophic bog formed the late successional vegetation during this first period of base level fall. A subsequent rise in base level at the start of the second depositional sequence raised the groundwater table and reset the vegetation ecology. This second depositional cycle occurred during a second period of base level fall and resulted in a second influx of transported upland pollen and dominance by the riparian *Alnipollentias* (alder) fen carr.

### Interbeds, laterites and lithomarges

Our palynological investigations have revealed that all but a few of the red interbeds examined in this study have a significant component of lacustrine influence, showing a floral assemblage of a landscape experiencing a temperate climate not dissimilar to our modern climate. Of the few red interbeds without lacustrine signals in the palynological data, most were barren.

The floral assemblage of Paleocene Antrim varied spatially and temporally for several reasons, with explosive volcanic activity represented by the rocks of the Interbasaltic Formation being of particular importance. Deepening our understanding of interbed palynology will be critical in building up a story of the timing of Antrim Lava Group volcanic activity.

The palynofloral evidence recovered in this study is that all of the palynofloras were derived from mesic vegetation communities. Previous studies including evidence from macrofloras and palynology have attributed the macrofossil record of the Antrim Lava Group to a mixed mesophytic forest (Boulter and Kvacek 1989), which was stated to be subtropical. Palynofloral assemblages recovered for this study concur that the vegetation was derived from mesic vegetation, including communities which could be attributed to a mixed mesophytic forest. However, other authors (Wang 1961; Wolfe 1979; Bondarenko *et al.* 2020) describe floras of this character as warm temperate.

### Palaeoclimate context

Because of the long period of time spanned by Antrim Lava Group activity, the Antrim area was undoubtedly subject to climatic variation during the Paleocene. The Lower Basalt Formation post-dates the early Danian Dan-C2 hyperthermal (65.2 Ma, Coccioni *et al.* 2010), being erupted during a period of relatively stable  $\delta^{18}\text{O}$  and  $\delta^{13}\text{C}$  values (Westerhold *et al.* 2020). Although the time interval spanned by the Antrim record includes the Late

Danian Event (62.2 Ma, Westerhold *et al.* 2011; Bornemann *et al.* 2021) and the Early Latest Paleocene Event (Bralower *et al.* 2002), these are short duration potential warming events which would not induce long duration tropical weathering. Our data support extensive weathering of basaltic lava flows, principally during the period of the Interbasaltic Formation. Evidence that this period of low tempo eruptions and volcanic quiescence experienced two or more phases of long-term lava-flow weathering is clear in the lithological and biostratigraphical data (Fig. 10). Alteration and weathering of lava flows continued during the Interbasaltic Formation and appears to have been contemporary with eruptions (e.g. weathering of the upper Interbasaltic Formation in 09/08-0002 potentially co-occurred with eruption of the Causeway Tholeiite Member, e.g. NIRE 03/08-0001).

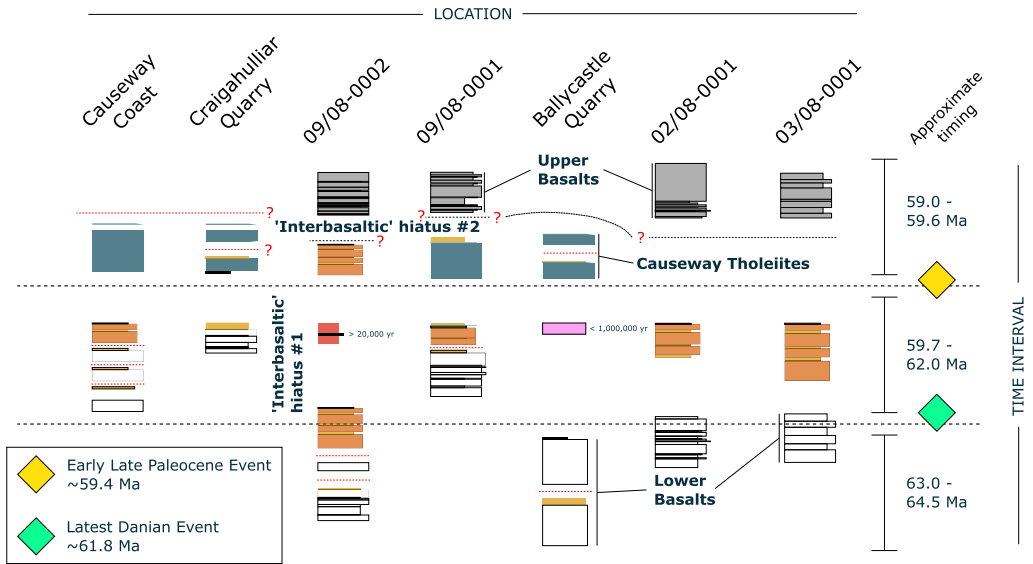
There is currently no convincing evidence that Antrim Lava Group volcanic activity was linked to either the Latest Danian Event (Sprong *et al.* 2013) or the Early Late Paleocene Event (Petruzzo 2005), both of which occurred within the period of Interbasaltic Formation deposition (Fig. 10). Volcanic activity during the Interbasaltic Formation period is broadly coincidental with eruptions in the Inner Hebrides (Fig. 10). Eruption of the Upper Basalt Formation has limited absolute age control (Wilkinson *et al.* 2017) but could be contemporaneous with eruptions of the Skye Main Lava Series. Constrained by isotopic dates for the Isle of Rum western granophyre and the Skye Cuillins Complex pegmatite dyke (Wilkinson *et al.* 2017; Jolley *et al.* 2021), the Skye Main Lava Series erupted during volcanic Phase 1 of the BIPIP. This late-stage Phase 1 effusive volcanism could be linked to the negative carbon excursion of the Early Late Paleocene Event, although a more precise chronostratigraphy is desirable.

### Antrim Lava Group thickness and volume

Examination of 19 borehole records with detailed log notes gave a range of lava-flow counts per borehole from 5 to 104, with one of these being excluded as only tuffaceous rhyolite was encountered (NIRE 01/08-0001). The remaining borehole records from 18 Lonmin boreholes showed flow counts from 5 to 84 individual lava flows, with an average lava-flow thickness of 4.82 m based on 581 discrete flows, the thickest of which was 32.77 m. The distribution of flow thicknesses is presented in Figure 11

Using a combination of open-source satellite data and GSNI geological maps in Quantum Geographic Information System (QGIS), we estimate the areal extent of the Antrim Lava Group to be 4093 km<sup>2</sup>. Using geological data from 55 boreholes across the Antrim Plateau, we found the following average

## Antrim Lava Group volcanism

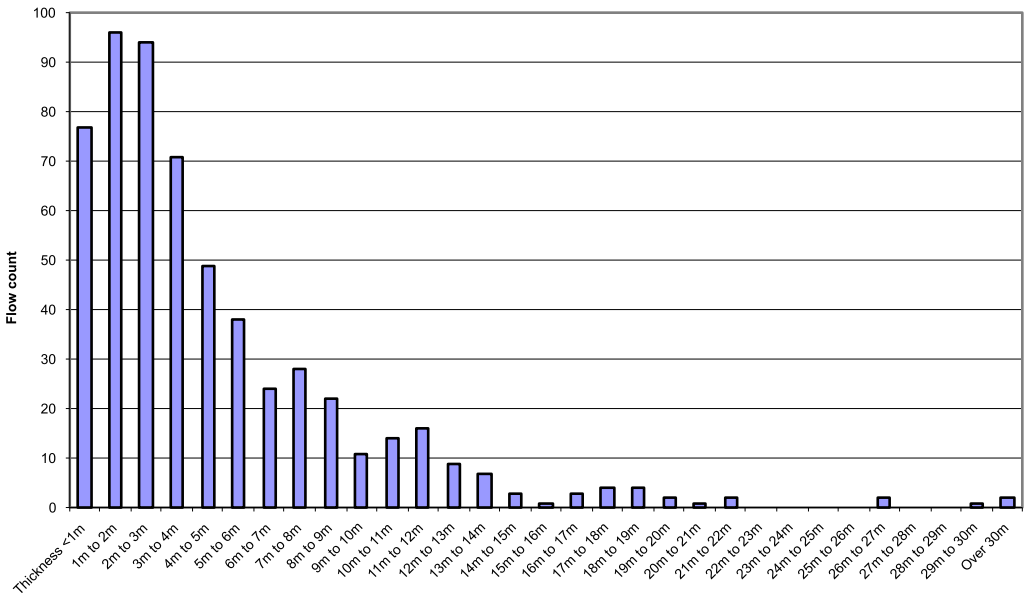


**Fig. 10.** Antrim stratigraphic table showing interpretations from palynological and geochemical findings.

thickness values for the Antrim Lava Group subunits and as a whole:

*Upper Basalt Formation 158.90 m*  
*Interbasaltic Formation 37.01 m*  
*Lower Basalt Formation 132.48 m*  
**Antrim Lava Group 328.40 m**

The thickness of the Antrim Lava Group varies significantly over the plateau but from the 55 borehole records we have calculated an average thickness of 328.40 m, and note the maximum recorded thickness of 771 m in the Ballymacilroy borehole (Thompson 1979). If this maximum thickness were taken as being the originally emplaced thickness



**Fig. 11.** Antrim Lava Group flow thickness histogram summarizing the distribution of lava-flow thicknesses encountered in all NIRE boreholes.

**Table 2.** Rates of effusion for Icelandic flood basalt eruptions at Laki (1783 AD) and Eldgjá (952 AD, Thordarson *et al.* 2001) based on measured volumes and duration from anecdotal evidence. Superscripts a and b refer to the associated ‘Rate of effusion’ and ‘Time taken’ columns in Table 3.

	Volume erupted measured km <sup>3</sup>	Time taken Months	Time taken Years	Rate of effusion calculated km <sup>3</sup> a <sup>-1</sup>
Laki (90% volume) <sup>a</sup>	14.0	5	0.42	33.60
Laki (100% volume) <sup>b</sup>	14.7	8	0.67	22.05
Eldgjá (short duration) <sup>a</sup>	19.6	36	3	6.53
Eldgjá (long duration) <sup>b</sup>	19.6	96	8	2.45

across the entire lava field, we get an estimated emplaced lava volume of 3156 km<sup>3</sup>. If we instead take the average measured thickness, we would arrive at an emplaced lava volume of 1344 km<sup>3</sup>. Clearly significant erosion has taken place during and subsequent to effusive volcanism, while the component of the province that would originally have extended beyond the modern day coastline is unconstrained and would imply estimates based on preserved thickness are likely conservative.

### Rates of lava emplacement

Approximating the rates of effusion, eruption or emplacement for a subprovince of the Paleogene NAIP is not straightforward. However, recently active volcanic systems might give us the closest analogous data for rates of effusion of the Antrim Lava Group flood basalts, as well as the wider NAIP and potentially other basaltic large igneous provinces. In the last 1100 years there have been two large basaltic eruption events in Iceland; Eldgjá in 934 and Laki in 1783. These events have been studied and their rates of effusion have been calculated (Eldgjá; Thordarson *et al.* 2001) or gleaned from anecdotal evidence (Laki; Thordarson and Self 2003). These basaltic effusions on Iceland provide relevant examples for interpreting the Antrim Lava Group due to their geographic location within the

NAIP and possible connection with the tectonic and mantle processes that gave rise to the lavas of Antrim.

Thordarson *et al.* (2001) stated that the Eldgjá basaltic flood lava eruption is the largest on Earth in the last millennium. These fissures produced 19.6 km<sup>3</sup> of basalt in eight distinct phases of activity that spanned 3 to 8 years (in the period AD 933 to 941). Conversely, Thordarson and Self (2003) calculated that the Laki fissure eruption had effused around 90% of the total volume of basaltic lava within only 5 months (14 km<sup>3</sup>), reaching 100% in 8 months (14.7 km<sup>3</sup>). To give context to these events, the 6 month eruption at Holuhraun, Iceland (2014–15) produced just 1.44 km<sup>3</sup>.

If we take their calculated rates of magma effusion for these volcanic events (Table 2) and apply it to the possible total volumes for the Antrim Lava Group estimated above, we find that volcanic events on the scale of Eldgjá and Laki would be capable of emplacing the entire Antrim Lava Group within 40 to 1288 years (Table 3).

We know, from a variety of existing research as well as our own findings, that the emplacement of the Antrim Lava Group spanned several million years, perhaps as long as 4.5 million years. Combining this information with the evidence of abundant weathered tops, palaeosols and other well-developed interbeds between flows of the Antrim Lava Group (Hill *et al.* 2000), even our most conservative estimates of effusion rate imply that >99.9% of the geological

**Table 3.** Emplacement duration for the Antrim Lava Group based on hypothetically continuous eruptions at rates of effusion calculated in Table 2, showing that the extant ALG lavas could have been emplaced in under 1300 years if emplacement had been uninterrupted. Superscripts a and b cross-reference to Table 2.

	Areal extent measured km <sup>2</sup>	Thickness estimated m	Volume estimated km <sup>3</sup>	Rate of effusion <sup>a</sup> Est. km <sup>3</sup> a <sup>-1</sup>	Rate of effusion <sup>b</sup> est. km <sup>3</sup> a <sup>-1</sup>	Time taken <sup>a</sup> Years (est.)	Time taken <sup>b</sup> Years (est.)
Antrim Lava Group cf. Laki	4093.05	328.40	1344	33.60	22.05	40	61
		771.00	3156			94	143
Antrim Lava Group cf. Eldgjá	4093.05	328.40	1344	6.53	2.45	206	549
		771.00	3156			483	1288



## Antrim Lava Group volcanism

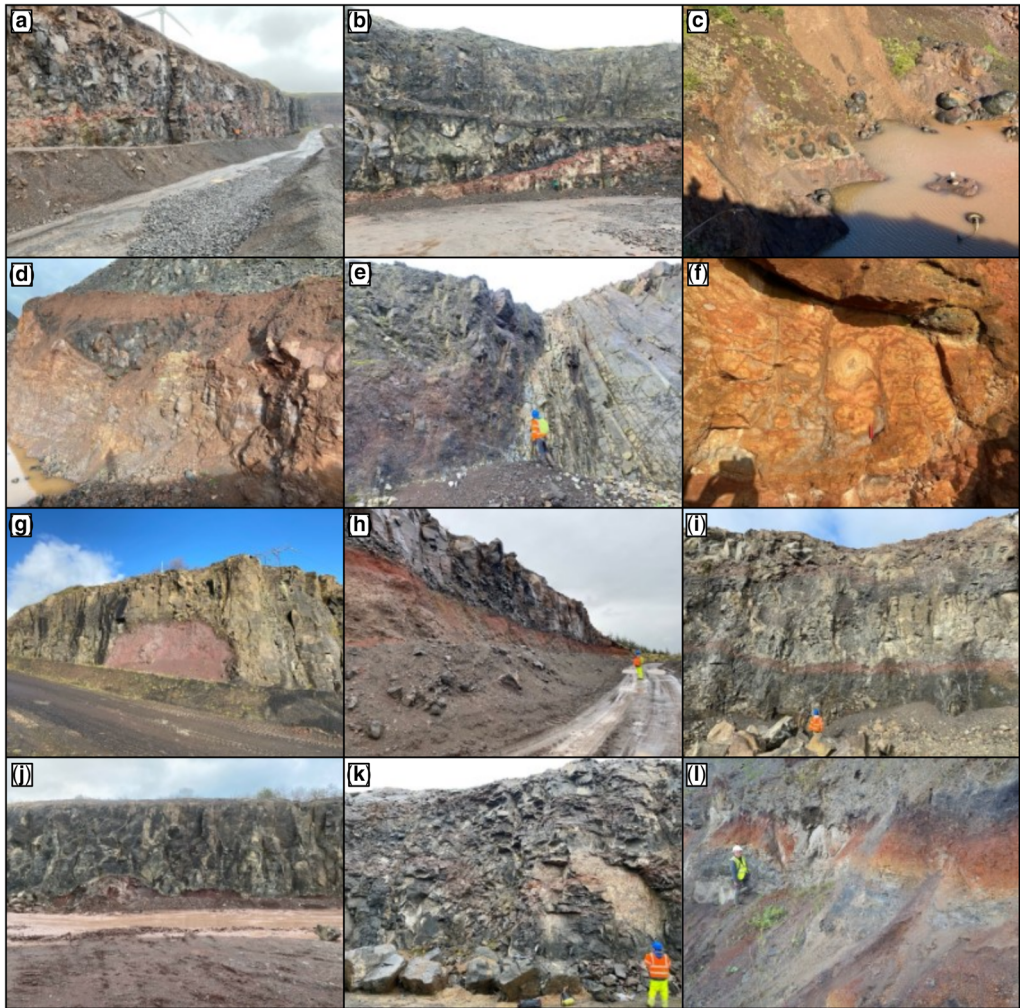
time locked away in the ~800 m thickness of basalt resides within these palaeosols, boles and interbeds.

### Interbeds of the Antrim Lava Group

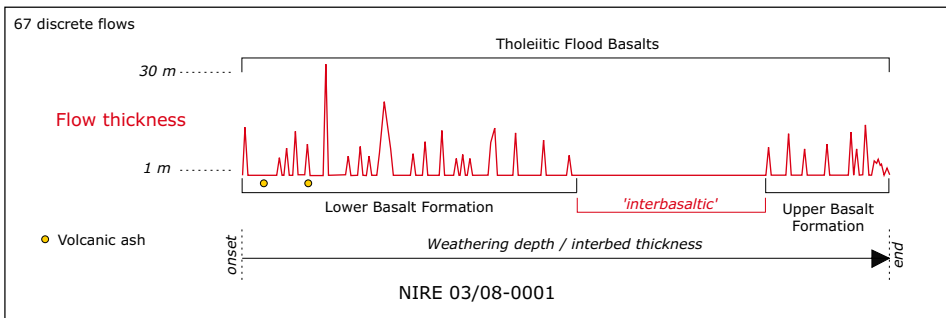
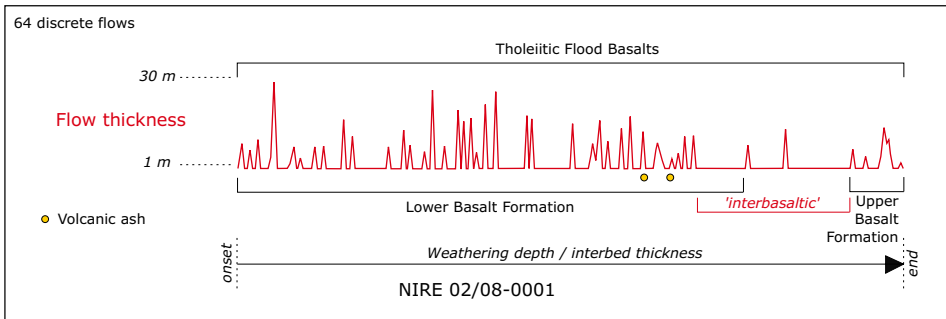
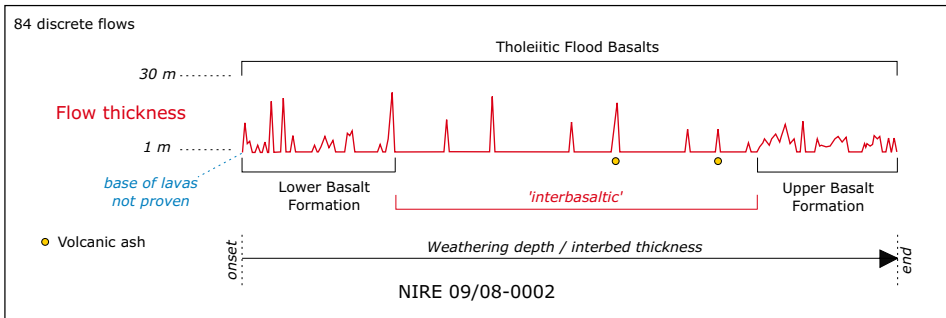
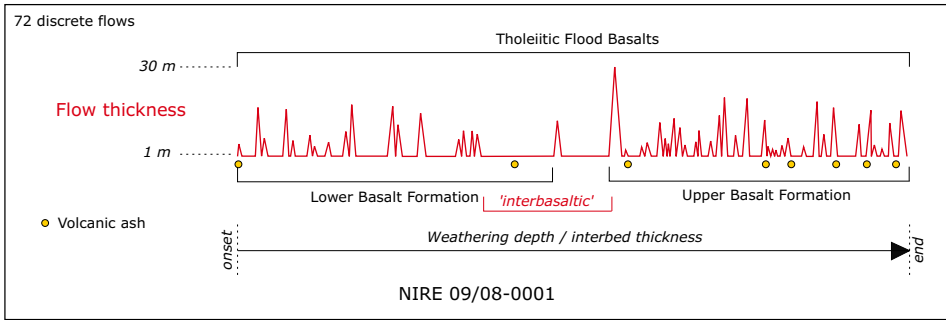
To date, mostly due to the geochemical and petrological similarities between the lavas of the Lower and Upper Basalt formations, differentiating these lava formations has mostly focused upon identifying the presence and relative position of the well-developed 'Interbasaltic Formation' interbeds that signify a break between these two distinct episodes of flood basalt volcanism. Where the interbed is absent or

not seen, field identification of the Lower or Upper Basalt Formation is almost impossible.

We have focused primarily on the boles and interbeds of the Interbasaltic Formation, but numerous interbeds are found at various horizons among the basalt flows of the Lower and Upper Basalt formations (Fig. 12), signifying indeterminate periods of subaerial or subaqueous exposure and weathering throughout the emplacement of the Antrim Lava Group. The regular occurrence of these interbeds among the lava flows of the Antrim Lava Group suggests that relatively long periods of quiescence were common throughout the emplacement of the subprovince.



**Fig. 12.** Antrim Lava Group boles and interbeds. (a) Craig's Quarry. (b) Blackmountain Quarry. (c) Clinty Quarry. (d) Clinty Quarry. (e) Corky Quarry. (f) Roveran Valley Head, Causeway Coast. (g) Croaghan Quarry. (h) Cam Quarry. (i) Craighall Quarry. (j) Craighall Quarry. (k) Knocklaughrim Quarry. (l) Interbed 1 at Ross's Quarry, Ballycastle.



**Fig. 13.** Cartoon of Antrim Lava Group eruptive tempo estimate based on weathering depth and interbed characteristics. Horizontal scale is an approximate time estimate based on weathering depths, interbed and palaeosol development and lava superposition, with flat areas of the plot indicating periods of quiescence between lava flows. The width of lava-flow 'spikes' are equal and for graphical purposes only. Vertical scale represents lava-flow thickness. Interbasaltic is in quotes due to the evident presence of basalt lava flows during this time period.

## Antrim Lava Group volcanism

In this work, we have linked the formation of these interbeds to a wet and fertile landscape of swamps, mesic vegetation, rivers and lakes; all of which require time and the absence of significant local volcanism in order to develop. Our results suggest that a chronology based on hiatus duration and weathering horizons holds strong potential to constrain eruptive tempo. At this stage, we provide an initial qualitative analysis; a full quantitative investigation would require additional methodological development and dating that falls outside the scope of our current research.

Focusing on these interbeds is key to unlocking the emplacement timing of the Antrim Lava Group, and this likely applies to different sub-provinces of the NAIP as well as other basaltic large igneous provinces around the globe. Plotting the depth of basalt weathering against flow group thickness (Fig. 13) provides a glimpse of the eruptive tempo analysis that may be possible, but quantifying rates of basalt weathering, particularly given uncertainties over contemporary climatic and hydrological/hydrogeological conditions, remains highly challenging. The thickness of weathered horizons among a lava pile is not a robust indicator of time between flows since numerous factors are at work, such as flow composition, flow crust thickness and type, run-off and climate. That said, the plots in Figure 13 give some early indication of the non-linear distribution of effusive episodes and intervening time hidden in these thin horizons pointing towards the need for more detailed future investigations.

The emplacement timing, or volcanic tempo, must also take account of the spatial variability of eruptions, i.e. the presence of the Causeway Tholeiite Member appears to be restricted only to the north of the Tow Valley Fault and suggests that not every episode of volcanicity would have contributed to emplacement across the entire Antrim Plateau, an observation that is also well documented in other parts of the province such as on the Faroe Islands and in the Faroe–Shetland Basin (Millett *et al.* 2017, 2021).

Investigation of NIRE borehole cores has identified certain geochemical flow groups that are absent at other locations. Indeed, analysis of the earliest basalt flows in some NIRE boreholes suggests that first flows at those locations were of the Upper Basalt Formation, likely millions of years after the initial onset of Lower Basalt Formation volcanism elsewhere in the Antrim Lava Group. Combined with the knowledge that calciphile ecologies were providing pollen and spores at the time that sands and silts of the sedimentary interbed at Ross's Quarry were being deposited (interbed 2), it is inferred that some limestone uplands must have persisted after the cessation of Lower Basalt Formation lava emplacement. The present day configuration of the

Antrim Lava Group almost entirely covering the limestones of the Ulster White Limestone Formation therefore reflects burial that must have been completed during emplacement of the Interbasaltic and the Upper Basalt Formations.

Increasing our understanding of the basaltic lava fields of the BIIP and the interbeds contained within has implications beyond academic research. Important hydrocarbon reserves are held within siliciclastic interbeds within the Faroe–Shetland Basin north of the UK with fields such as Cambo and Rosebank looking like they will move towards development (Hardman *et al.* 2019; Duncan *et al.* 2020). Recent studies focused on the sub-surface characterization of the volcanic sequences in the Rosebank Field have highlighted the potential for integrating sub-surface borehole data to better understand the volcanic facies, their distribution, correlation, and implications for associated sediment reservoirs (Millett *et al.* 2021). Similar approaches to the sub-surface characterization of the Antrim borehole data for facies analyses may be applied going forward and will help to improve future appraisal of energy resources within the province. In the same way, the potential for carbon capture and storage (CCS) projects both in general (Raza *et al.* 2022) and within the province (e.g. Andrews 2022) will benefit from an improved appreciation of how these lava fields develop over time in terms of emplacement, volcanic facies, volcanic tempo and associated alteration which can significantly impact reservoir properties (e.g. Liu *et al.* 2012; Rosenqvist *et al.* 2023a, 2023b; Millett *et al.* 2023) and the presence of potential inter-lava sediments.

Integration of focused and detailed palynological studies with high resolution petrological and laboratory geochemical analysis of NIRE borehole core samples and field exposures holds further potential to advance the understanding of flood basalt emplacement mechanisms and timing, the ecology of the local environment and climatic impacts of these eruptions.

## Conclusions

Within this study, a detailed appraisal of interbeds among the lavas of the Antrim Lava Group, focusing on the Interbasaltic Formation, was carried out using a combination of geochemical and palynological analyses. From this study, we can draw the following conclusions:

- (1) New palynological evidence suggests:
  - (i) A warm temperate climate, not subtropical;
  - (ii) An established fen carr was in the catchment area of sediments deposited during or following the emplacement period of the Causeway Tholeiite Member;

- (iii) Areas of Ulster White Limestone Group persisted coevally with the emplacement of the Causeway Tholeiite Member.
- (2) Re-evaluation of NIRE borehole core and field outcrop revealed:
  - (i) The presence of a 2.5 m thick sedimentary unit among flows of the Causeway Tholeiite Member at Ross's Quarry, near Ballycastle;
  - (ii) Much of the Interbasaltic Formation is, or was, basaltic lava;
  - (iii) In places the Antrim Lava Group has at least 84 discrete lava flows (NIRE 09/08-0002).
- (3) The presence and distribution of weathering horizons among the Antrim Lava Group is not evenly distributed and suggests that the locations of effusion and eruption moved around over the period of emplacement and that the eruptions were often significantly spaced out over time.
- (4) Improved knowledge of the internal structure and composition of BIPIP lava fields can aid with understanding energy resources and associated reservoirs in the province, e.g. Rosebank, Cambo as well as the assessment of potential reservoir rocks for CCS.
- (5) This study highlights the need for high resolution, focused palynological and geochemical investigation of all Antrim Lava Group boles, laterites and interbeds in order to more fully constrain the volcanic tempo, ecological diversity, local environment and the wider environmental impacts of the basaltic, intermediate and acidic volcanism of the Antrim Lava Group.

**Acknowledgements** The authors wish to thank UKRI/NERC/CENTA and BGS/GSNI for funding and supporting the main research at the University of Birmingham. We would like to thank Dr Timo Korth and Advanced Logic Technologies (ALT) for donating WellCAD software to this research. The authors wish to thank the two anonymous reviewers who provided helpful, insightful and encouraging feedback. Our heartfelt appreciation is due to all of the Northern Irish quarry operators who kindly permitted us access to their exposures, particularly the Ross family who permitted repeated visits to their Ballycastle Quarry. Gordon Best (Regional Director of the Mineral Products Association (Northern Ireland) Ltd) deserves special mention for supporting our request and facilitating communications with the quarry operators. Final thanks to Dr Mike Simms and Dr Dougal Jerram for their encouragement, company, conversation and expertise that immeasurably helped with this research.

**Competing interests** The authors declare that they have no known competing financial interests or personal

relationships that could have appeared to influence the work reported in this paper.

**Author contributions** **AB-B**: conceptualization (lead), data curation (lead), formal analysis (lead), funding acquisition (lead), investigation (lead), methodology (lead), project administration (lead), resources (lead), software (lead), visualization (lead), writing – original draft (lead), writing – review & editing (lead); **DJ**: formal analysis (supporting), methodology (equal), writing – original draft (supporting), writing – review & editing (supporting); **JM**: formal analysis (supporting), methodology (supporting), writing – review & editing (supporting); **CS**: funding acquisition (equal), project administration (supporting), supervision (lead), writing – review & editing (supporting); **SW**: funding acquisition (supporting), supervision (equal), writing – review & editing (supporting); **RR**: funding acquisition (supporting), methodology (supporting), project administration (supporting), supervision (supporting), writing – review & editing (supporting); **EC**: data curation (supporting), formal analysis (supporting), investigation (supporting), writing – review & editing (supporting).

**Funding** Adam Neil William Beresford-Browne was supported by the British Geological Survey and the Natural Environment Research Council.

**Data availability** The data that support the findings of this study are available from the Geological Survey of Northern Ireland and Trinity College Dublin but restrictions apply to the availability of these data, which were used under licence for the current study, and so are not publicly available. Data are however available from the authors upon reasonable request and with permission of Dr Rob Raine (GSNI) and Dr Elliot Carter (TCD).

## References

- Anderson, F.W. and Dunham, K.C. 1966. *The Geology of Northern Skye*. HM Stationery Office, Edinburgh.
- Andrews, G. 2022. Geological Carbon Storage in Northern Irish Basalts: Prospectivity and Potential, <https://doi.org/10.2139/ssrn.4157443>
- Babechuk, M.G., Widdowson, M. and Kamber, B.S. 2014. Quantifying chemical weathering intensity and trace element release from two contrasting basalt profiles, Deccan Traps, India. *Chemical Geology*, **363**, 56–75, <https://doi.org/10.1016/j.chemgeo.2013.10.027>
- Bailey, E.B., Clough, C.T., Wright, W.B., Richey, J.E. and Wilson, G.V. 1924. *Tertiary and Post-Tertiary Geology of Mull, Loch Aline and Oban*. Memoir of the Geological Survey of Great Britain, HMSO, Edinburgh.
- Bell, B.R., Williamson, I.T., Head, F.E. and Jolley, D.W. 1996. On the origin of a reddened interflow bed within the Paleocene lava field of north Skye. *Scottish Journal of Geology*, **32**, 117–126, <https://doi.org/10.1144/sjg32020117>
- Bondarenko, O.V., Blokhina, N.I., Mosbrugger, V. and Utescher, T. 2020. Paleogene climate dynamics in the Primorye Region, far east of Russia, based on a coexistence approach analysis of palaeobotanical data.



## Antrim Lava Group volcanism

- Palaeobiodiversity and Palaeoenvironments*, **100**, 5–31, <https://doi.org/10.1007/s12549-019-00377-4>
- Bornemann, A., Jehle, S., Lagel, F., Deprez, A., Petrizzo, M.R. and Speijer, R.P. 2021. Planktic foraminiferal response to an early Paleocene transient warming event and biostratigraphic implications. *International Journal of Earth Sciences*, **110**, 583–594, <https://doi.org/10.1007/s00531-020-01972-z>
- Boulter, M.C. and Kvacek, Z. 1989. The Paleocene flora of the Isle of Mull. *Special Papers in Palaeontology*, **42**, 1–149.
- Bralower, T., Premoli Silva, I. and Malone, M. 2002. Leg 198. Proceedings of the Ocean Drilling Program: Initial Reports, College Station, TX (Ocean Drilling Program), <https://doi.org/10.2973/odp.proc.ir.198>
- Coccioni, R., Frontalini, F., Bancaa, G., Fornaciari, E., Jovane, L. and Sprovieri, M. 2010. The Dan-C2 hyperthermal event at Gubbio (Italy): global implications, environmental effects, and cause(s). *Earth and Planetary Science Letters*, **297**, 298–305, <https://doi.org/10.1016/j.epsl.2010.06.031>
- Cole, G.A.J., Wilkinson, S.B., M’Henry, A.R., Kilroe, J.R., Seymour, H.J., Moss, C.E. and Haigh, W.D. 1912. The interbasaltic rocks (iron ores and bauxites) of north-east Ireland. *Memoirs of the Geological Survey of Ireland (Economic)*, **129**.
- Daly, R.J. and Jolley, D.W. 2015. What was the nature and role of Normapolles angiosperms? A case study from the earliest Cenozoic of Eastern Europe. *Palaeogeography, Palaeoclimatology, Palaeoecology*, **418**, 141–149, <https://doi.org/10.1016/j.palaeo.2014.10.014>
- Duncan, L.J., Dennehy, C.J., Ablard, P.M. and Wallis, D.W. 2020. The Rosebank Field, Blocks 213/27a, 213/26b, 205/1a and 205/2a, UK Atlantic Margin. *Geological Society, London, Memoirs*, **52**, 980–989, <https://doi.org/10.1144/M52-2018-42>
- Ebinghaus, A., Jolley, D.W. and Hartley, A. 2015. Extrinsic forcing of plant ecosystems in a large igneous province: the Columbia River flood basalt province, Washington State, USA. *Geology*, **43**, 1107–1110, <https://doi.org/10.1130/G37276.1>
- Evans, A.L., Fitch, F.J. and Miller, J.A. 1973. Potassium–argon age determinations on some British tertiary igneous rocks. *Journal of the Geological Society, London*, **129**, 419–438, <https://doi.org/10.1144/gsjgs.129.4.0419>
- Eyles, V.A. 1950. Note on the interbasaltic horizon in Northern Ireland. *Journal of the Geological Society, London*, **106**, 136–137, <https://doi.org/10.1144/GSL.JGS.1950.106.01-04.10>
- Eyles, V.A. 1952. The composition and origin of the Antrim laterites and bauxites. *Memoirs of the Geological Survey, Government of Northern Ireland. Belfast: Her Majesty’s Stationary Office*.
- Ganerød, M., Smethurst, M.A. *et al.* 2010. The North Atlantic Igneous Province reconstructed and its relation to the Plume Generation Zone: the Antrim Lava Group revisited. *Geophysical Journal International*, **182**, 183–202, <https://doi.org/10.1111/j.1365-246X.2010.04620>
- Ganerød, M., Chew, D.M., Smethurst, M.A., Troll, V.R., Corfu, F., Meade, F. and Prestvik, T. 2011. Geochronology of the Tardree rhyolite complex, Northern Ireland; implications for zircon fission-track studies, the North Atlantic igneous province and the age of the Fish Canyon sanidine standard. *Chemical Geology*, **286**, 222–228, <https://doi.org/10.1016/j.chemgeo.2011.05.007>
- Ghosh, P., Sayeed, M.R.G., Islam, R. and Hundekari, S.M. 2006. Inter-basaltic clay (bole bed) horizons from Deccan traps of India: Implications for palaeo-weathering and palaeo-climate during Deccan volcanism. *Palaeogeography, Palaeoclimatology, Palaeoecology*, **242**, 90–109, <https://doi.org/10.1016/j.palaeo.2006.05.018>
- Godwin, H., Clowes, D.R. and Huntley, B. 1974. Studies in the Ecology of Wicken Fen: V. Development of Fen Carr. *Journal of Ecology*, **62**, 197–214, <https://www.jstor.org/stable/2258889> <https://doi.org/10.2307/2258889>
- Grenfell, H.R. 1995. Probable fossil zygnematacean algal spore genera. *Review of Palaeobotany and Palynology*, **84**, 201–220, [https://doi.org/10.1016/0034-6667\(94\)00134-6](https://doi.org/10.1016/0034-6667(94)00134-6)
- Gruas-Cavagnetto, C. 1977. Etude palynologique de L’Eocene du bassin Anglo-Parisien. *Bulletin d’information des géologues du Bassin de Paris*, **14**, 51–58.
- Halbritter, H., Ulrich, S. *et al.* 2018. *Illustrated Pollen Terminology*. Springer, Cham, Switzerland, <https://doi.org/10.1007/978-3-319-71365-6>
- Hardman, J., Schofield, N., Jolley, D., Hartley, A., Holford, S. and Watson, D. 2019. Controls on the distribution of volcanism and intra-basaltic sediments in the Cambo–Rosebank region, West of Shetland. *Petroleum Geoscience*, **25**, 71–89, <https://doi.org/10.1144/petgeo2017-061>
- Hill, I.G., Worden, R.H. and Meighan, I.G. 2000. Geochemical evolution of a palaeolaterite: the Interbasaltic Formation, Northern Ireland. *Chemical Geology*, **166**, 65–84, [https://doi.org/10.1016/S0009-2541\(99\)00179-5](https://doi.org/10.1016/S0009-2541(99)00179-5)
- Hill, I.G., Worden, R.H. and Meighan, I.G. 2001. Formation of interbasaltic laterite horizons in NE Ireland by early Tertiary weathering processes. *Proceedings of the Geologists’ Association*, **112**, 339–348, [https://doi.org/10.1016/S0016-7878\(01\)80013-4](https://doi.org/10.1016/S0016-7878(01)80013-4)
- Hill, M.O. 1979. DECORANA. A Fortran program for detrended correspondence analysis and reciprocal averaging. *Ecological and Systematics Department*.
- Hill, M.O. and Gauch, H.G. 1980. Detrended correspondence analysis: an improved ordination technique. *In: Classification and ordination*. Springer, Dordrecht, 47–58.
- á Horni, J., Hopper, J.R. *et al.* 2017. Regional distribution of volcanism within the North Atlantic Igneous Province. *Geological Society, London, Special Publications*, **447**, 105–125, <https://doi.org/10.1144/SP447.18>
- Hull, E. 1874. IV. – The volcanic history of Ireland: being the anniversary address delivered to the Royal Geological Society of Ireland, February 11th, 1874. *Geological Magazine*, **1**, 205–210, <https://doi.org/10.1017/S0016756800169493>
- Jolley, D.W. 1997. Palaeosurface palynofloras of the Skye lava field and the age of the British Tertiary Volcanic Province. *Geological Society, London, Special Publications*, **120**, 67–94, <https://doi.org/10.1144/GSL.SP.1997.120.01.06>
- Jolley, D.W. 1998. Palynostratigraphy and depositional history of the Paleocene Ormesby/Thanet depositional sequence set in southeastern England and its correlation with continental West Europe and the Lista Formation,



- North Sea. *Review of Palaeobotany and Palynology*, **99**, 265–315, [https://doi.org/10.1016/S0034-6667\(97\)00039-0](https://doi.org/10.1016/S0034-6667(97)00039-0)
- Jolley, D.W. and Morton, A.C. 1992. Palynological and petrological characterisation of a North Sea volcanoclastic sequence. *Proceedings of the Geologists' Association*, **103**, 119–127, [https://doi.org/10.1016/S0016-7878\(08\)80189-7](https://doi.org/10.1016/S0016-7878(08)80189-7)
- Jolley, D.W., Widdowson, M. and Self, S. 2008. Volcanogenic nutrient fluxes and plant ecosystems in large igneous provinces: an example from the Columbia River Basalt Group. *Journal of the Geological Society, London*, **165**, 955–966, <https://doi.org/10.1144/0016-76492006-199>
- Jolley, D.W., Bell, B.R., Williamson, I.T. and Prince, I. 2009. Syn-eruption vegetation dynamics, palaeosurfaces and structural controls on lava field vegetation: an example from the Paleogene Staffa Formation, Mull Lava Field, Scotland. *Review of Palaeobotany and Palynology*, **153**, 19–33, <https://doi.org/10.1016/j.revpalbo.2008.06.003>
- Jolley, D.W., Millett, J.M., Schofield, N., Broadley, L. and Hole, M.J. 2021. Stratigraphy of volcanic rock successions of the North Atlantic rifted margin: the offshore record of the Faroe–Shetland and Rockall basins. *Earth and Environmental Science Transactions of the Royal Society of Edinburgh*, **112**, 61–88, <https://doi.org/10.1017/S1755691021000037>
- Jolley, D.W., Passey, S.R., Vosgerau, H. and Sørensen, E.V. 2022. Volcanic landscape controls on pre-rift to syn-rift volcano sedimentary systems: the Prestfjall Formation eruptive hiatus, Faroe Islands Basalt Group, northeast Atlantic. *Earth and Environmental Science Transactions of the Royal Society of Edinburgh*, **113**, 75–98, <https://doi.org/10.1017/S1755691022000056>
- Knox, R.O.B. and Morton, A.C. 1988. The record of early Tertiary N Atlantic volcanism in sediments of the North Sea Basin. *Geological Society, London, Special Publications*, **39**, 407–419, <https://doi.org/10.1144/GSL.SP.1988.039.01.36>
- Krutzsch, W. 1966. Die sporenstratigraphische Gliederung des alteren Tertiär im nördlichen Mitteleuropa (Paläozän-Mittelliozän) – methodische Grundlagen und gegenwärtiger Stand der Untersuchungen. *Abhandlungen des Zentralen Geologischen Instituts*, **8**, 112–149.
- Liu, J., Wang, P., Zhang, Y., Bian, W., Huang, Y., Tang, H. and Chen, X. 2012. Volcanic rock-hosted natural hydrocarbon resources: a review. In: Nemeth, K. (ed.) *Updates in Volcanology: New Advances in Understanding Volcanic Systems*. IntechOpen.
- Liu, X., Liu, T., Xu, T., Liu, C. and Chen, M. 1988. The Chinese loess in Xifeng, I. The primary study on magnetostratigraphy of a loess profile in Xifeng area, Gansu province. *Geophysical Journal International*, **92**, 345–348, <https://doi.org/10.1111/j.1365-246X.1988.tb01146.x>
- Lyle, P. 1988. The geochemistry, petrology and volcanology of the Tertiary lava succession of the Binevenagh-Benbraddagh area of County Londonderry. *Irish Journal of Earth Sciences*, **9**, 141–151.
- Lyle, P. 2000. The eruption environment of multi-tiered columnar basalt lava flows. *Journal of the Geological Society, London*, **157**, 715–722, <https://doi.org/10.1144/jgs.157.4.715>
- Lyle, P. and Thompson, S.J. 1983. The classification and chemistry of the Tertiary intermediate lavas of North-east Ireland. *Scottish Journal of Geology*, **19**, 17–27, <https://doi.org/10.1144/sjg19010017>
- Lyle, P. and Preston, J. 1993. Geochemistry and volcanology of the Tertiary basalts of the Giant's Causeway area, Northern Ireland. *Journal of the Geological Society, London*, **150**, 109–120, <https://doi.org/10.1144/gsjgs.150.1.0109>
- Mallet, F.R. 1881. On the Ferruginous Beds Associated with the Basaltic Rocks of Northeastern Ulster, in Relation to Indian Laterite. *Records of the Geological Survey of India*, **14**.
- Millett, J.M., Rossetti, L. *et al.* 2023. Lava flow hosted reservoirs: a review. *Geological Society, London, Special Publications*, **547**, <https://doi.org/10.1144/SP547-2023-102>
- Millett, J.M., Hole, M.J., Jolley, D.W. and Passey, S.R. 2017. Geochemical stratigraphy and correlation within large igneous provinces: the final preserved stages of the Faroe Islands Basalt Group. *Lithos*, **286**, 1–15, <https://doi.org/10.1016/j.lithos.2017.05.011>
- Millett, J.M., Jerram, D.A. *et al.* 2021. The Rosebank Field, NE Atlantic: volcanic characterisation of an inter-lava hydrocarbon discovery. *Basin Research*, **33**, 2883–2913, <https://doi.org/10.1111/bre.12585>
- Muff, H.B. 1908. Report relating to the geology of the East Africa Protectorate. Colonial reports, miscellaneous, No. **45**.
- Old, R.A. 1975. The age and field relationships of the Tardree Tertiary Rhyolite Complex County Antrim Northern Ireland. *Institute of Geological Sciences, Bulletin of the Geological Survey of Great Britain*, **51**.
- Passey, S.R. and Jolley, D.W. 2009. A revised lithostratigraphic nomenclature for the Paleogene Faroe Islands Basalt Group, NE Atlantic Ocean. *Earth and Environmental Science Transactions of the Royal Society of Edinburgh*, **99**, 127–158, <https://doi.org/10.1017/S1755691009008044>
- Patterson, E.M. and Mitchell, W.A. 1955. The Tertiary lava succession in the northern part of the Antrim Plateau. *Proceedings of the Royal Irish Academy, Section B: Biological, Geological, and Chemical Science*, 1954–1956, **57**, 79–122.
- Petrizzo, M.R. 2005. An early late Paleocene event on Shatsky Rise, northwest Pacific Ocean (ODP Leg 198): Evidence from planktonic foraminiferal assemblages. *Proceedings of the Ocean Drilling Program. Scientific Results*, **198**. Ocean Drilling Program.
- Price, R.C., Gray, C.M., Wilson, R.E., Frey, F.A. and Taylor, S.R. 1991. The effects of weathering on rare-earth element, Y and Ba abundances in Tertiary basalts from southeastern Australia. *Chemical Geology*, **93**, 245–265, [https://doi.org/10.1016/0009-2541\(91\)90117-A](https://doi.org/10.1016/0009-2541(91)90117-A)
- Ramette, A. 2007. Multivariate analyses in microbial ecology. *FEMS Microbiology Ecology*, **62**, 142–160, <https://doi.org/10.1111/j.1574-6941.2007.00375.x>
- Raza, A., Glatz, G., Gholami, R., Mahmoud, M. and Alafnan, S. 2022. Carbon mineralization and geological storage of CO<sub>2</sub> in basalt: mechanisms and technical challenges. *Earth-Science Reviews*, **229**, 104036, <https://doi.org/10.1016/j.earscirev.2022.104036>

## Antrim Lava Group volcanism

- Rosenqvist, M.P., Meakins, M.W., Planke, S., Millett, J.M., Kjöll, H.J., Voigt, M.J. and Jamtveit, B. 2023a. Reservoir properties and reactivity of the Faroe Islands Basalt Group: investigating the potential for CO<sub>2</sub> storage in the North Atlantic Igneous Province. *International Journal of Greenhouse Gas Control*, **123**, 103838, <https://doi.org/10.1016/j.ijggc.2023.103838>
- Rosenqvist, M.P., Millett, J.M. *et al.* 2023b. The architecture of basalt reservoirs in the North Atlantic Igneous province with implications for basalt carbon sequestration. *Geological Society, London, Special Publications*, **547**, <https://doi.org/10.1144/SP547-2023-96>
- Rosenthal, Y., Holbourn, A.E. *et al.* 2018. Site U1487. In: Rosenthal, Y., Holbourn, A.E. and Kulhanek, D.K. (eds) *Proceedings of the International Ocean Discovery Program*, **363**, College Station, TX (International Ocean Discovery Program), <https://doi.org/10.14379/iodp.proc.363.108.2018>
- Schofield, N. and Jolley, D.W. 2013. Development of intra-basaltic lava-field drainage systems within the Faroe-Shetland Basin. *Petroleum Geoscience*, **19**, 273–288, <https://doi.org/10.1144/petgeo2012-061>
- Scrivenor, J.B. 1937. A Note on ‘Buchanan’s Laterite’ 2. *Geological Magazine*, **74**, 257–262, <https://doi.org/10.1017/S0016756800089834>
- Simms, M.J. 2021. Subsidence, not erosion: revisiting the emplacement environment of the Giant’s Causeway, Northern Ireland. *Proceedings of the Geologists’ Association*, **132**, 537–548, <https://doi.org/10.1016/j.pgeola.2021.07.001>
- Simpson, J.B. 1961. The Tertiary pollen-flora of Mull and Ardnamurchan. *Transactions of the Royal Society of Edinburgh*, **114**, 421–468, <https://doi.org/10.1017/S0080456800100407>
- Sprong, J., Kouwenhoven, T.J., Bornemann, A., Dupuis, C., Speijer, R.P., Stassen, P. and Steurbaut, E. 2013. In search of the Latest Danian event in a paleobathymetric transect off Kasserine Island, north-central Tunisia. *Palaeogeography, Palaeoclimatology, Palaeoecology*, **379**, 1–16, <https://doi.org/10.1016/j.palaeo.2013.01.018>
- Tate, R. and Holden, J.S. 1870. On the iron-ores associated with the basalts of the north-east of Ireland. *Journal of the Geological Society, London*, **xxvi**, 151, <https://doi.org/10.1144/GSL.JGS.1870.026.01-02.17>
- Ter Braak, C.J.F. 1986. Canonical correspondence analysis: a new eigenvector technique for multivariate direct gradient analysis. *Ecology*, **67**, 1167–1179, <https://doi.org/10.2307/1938672>
- Thompson, S.J. 1979. Preliminary report on the Ballymacilroy No 1 borehole, Ahoghill, Co Antrim. Geological Survey of Northern Ireland, Open File Report No 63.
- Thordarson, T. and Self, S. 2003. Atmospheric and environmental effects of the 1783–1784 Laki eruption: a review and reassessment. *Journal of Geophysical Research: Atmospheres*, **108**, AAC-7, <https://doi.org/10.1029/2001JD002042>
- Thordarson, T., Miller, D.J., Larsen, G., Self, S. and Sigurdsson, H. 2001. New estimates of sulfur degassing and atmospheric mass-loading by the 934 AD Eldgjá eruption, Iceland. *Journal of Volcanology and Geothermal Research*, **108**, 33–54, [https://doi.org/10.1016/S0377-0273\(00\)00277-8](https://doi.org/10.1016/S0377-0273(00)00277-8)
- Tschudy, R.H. 1973. *Complexipollis pollen lineage in Mississippi Embayment rocks*. US Geological Survey Professional Paper 743-C.
- Vieira, M., Mahdi, S. and Osterloff, P. 2018. New Early Paleocene (Danian) dinoflagellate cyst species from the Ormen Lange Field, Møre Basin, Norwegian Continental Shelf. *Palynology*, **42**, 180–198, <https://doi.org/10.1080/01916122.2017.1314390>
- Walker, G.P.L. 1959. Some observations on the Antrim Basalts and associated dolerite intrusions. *Proceedings of the Geologists’ Association*, **70**(pt 2).
- Wang, C.W. 1961. The Forests of China. *Maria Moors Cabot Foundation*, **5**.
- Westerhold, T., Röhl, U., Donner, B., McCarren, H.K. and Zachos, J.C. 2011. A complete high-resolution Paleocene benthic stable isotope record for the central Pacific (ODP Site 1209). *Paleoceanography*, **26**, <https://doi.org/10.1029/2010PA002092>
- Westerhold, T., Marwan, N. *et al.* 2020. An astronomically dated record of Earth’s climate and its predictability over the last 66 million years. *Science (New York, NY)*, **369**, 1383–1387, <https://doi.org/10.1126/science.aba6853>
- Wheeler, B. and Proctor, M.C.F. 2000. Ecological Gradients, Subdivisions and Terminology of North-West European Mires. *Journal of Ecology*, **88**, 187–203, <https://doi.org/10.1046/j.1365-2745.2000.00455.x>
- Wilkinson, C.M., Ganerød, M., Hendricks, B.W.H. and Eide, E.A. 2017. Compilation and appraisal of geochronological data from the North Atlantic Igneous Province (NAIP). *Geological Society of London, Special Publication*, **447**, 69–103, <https://doi.org/10.1144/SP447.10>
- Williamson, I.T. and Bell, B.R. 2012. The Staffa Lava Formation: graben-related volcanism, associated sedimentation and landscape character during the early development of the Palaeogene Mull Lava Field, NW Scotland. *Scottish Journal of Geology*, **48**, 1–46, <https://doi.org/10.1144/0036-9276/01-439>
- Wilson, H.E. 1965. Lava ploughing in the Tertiary basalts of County Antrim. *Geological Magazine*, **102**, 538–540, <https://doi.org/10.1017/S0016756800000248>
- Wolfe, J. 1979. Temperature Parameters of Humid to Mesic Forests of Eastern Asia and Relation to Forests of Other Regions of the Northern Hemisphere and Australasia. *Geological Survey Professional Paper*, **1106**.