

Physiological extracellular electrical signals guide and orient the polarity of gut epithelial cells

Jin Pu, Lin Cao & Colin D McCaig

To cite this article: Jin Pu, Lin Cao & Colin D McCaig (2015) Physiological extracellular electrical signals guide and orient the polarity of gut epithelial cells, *Tissue Barriers*, 3:3, e1037417, DOI: [10.1080/21688370.2015.1037417](https://doi.org/10.1080/21688370.2015.1037417)

To link to this article: <http://dx.doi.org/10.1080/21688370.2015.1037417>



© Published with license by Taylor & Francis© 2015 Crown Copyright



Accepted author version posted online: 18 Apr 2015.



Submit your article to this journal [↗](#)



Article views: 229



View related articles [↗](#)



View Crossmark data [↗](#)

Physiological extracellular electrical signals guide and orient the polarity of gut epithelial cells

Jin Pu*, Lin Cao, and Colin D McCaig

School of Medical Sciences; Institute of Medical Sciences; University of Aberdeen; Aberdeen, UK

Apical-basal polarity in epithelial cells is a fundamental process in the morphogenesis of many tissues. But how epithelial cells become oriented with functionally specialized luminal and serosal facing membranes is not understood fully. Cell-cell and cell-substrate contacts induce the asymmetric distribution of Na^+/K^+ -ATPase pumps on basal membrane and are essential for apical-basal polarity formation. Inhibition of the Na^+/K^+ -ATPase pump abolished apical formation completely. But it is unclear how this pump regulated the apical polarity. We discovered that the transepithelial potential difference (TEP) which is dependent on the basal Na^+/K^+ -ATPase distribution acts as an essential coordinating signal for apical membrane formation through Ror2/ERK1/2/LKB1 signaling. A similar concept applies to all other ion-transporting epithelial and endothelial tissues and this raises the possibility of regulating the TEP as a therapeutic intervention for disorders in which epithelial function is compromised by faulty electrical signaling.

Keywords: apical-basal polarity, cell polarization, extracellular electrical signal, Na^+/K^+ -ATPase, transepithelial potential difference

© 2015 Crown Copyright

*Correspondence to: Jin Pu; E-mail: jin.pu@abdn.ac.uk

Submitted: 01/16/2015

Revised: 03/24/2015

Accepted: 03/27/2015

<http://dx.doi.org/10.1080/21688370.2015.1037417>

This is an Open Access article distributed under the terms of the Creative Commons Attribution-Non-Commercial License (<http://creativecommons.org/licenses/by-nc/3.0/>), which permits unrestricted non-commercial use, distribution, and reproduction in any medium, provided the original work is properly cited. The moral rights of the named author(s) have been asserted.

Commentary on 'Polarizing intestinal epithelial cells electrically through Ror2' *J Cell Sci.* 2014, 127:3233

engaged in regulation with basolateral polarity factors to set up the epithelial apical-basal axis.¹ In three dimensional cultures of Caco-2 cells, ouabain as an inhibitor of basal Na^+/K^+ -ATPase pump inhibits lumen expansion completely.² In addition, inhibition of Na^+/K^+ -ATPase and its downstream RhoA GTPase prevented the formation of tight junctions and desmosomes and the cells remained nonpolarized.³ However, how the basal Na^+/K^+ -ATPase pump regulates the epithelial polarity is uncertain. Our recent discovery presents a new and additional interpretation, namely that the transepithelial potential difference (TEP) based on Na^+/K^+ -ATPase expression on the basal membrane acts as a bioelectrical signal to regulate apical membrane formation.⁴

The TEP is an extracellular bioelectrical signal which has been shown to provide a directional signal for cell migration, wound healing and neurite growth.⁵ The TEP is an inherent property of transporting epithelia and arises from spatial variations in the function of ion pumps, channels, or leak conductance across individual cells, and therefore collectively across a layer of cells.⁵ An asymmetric distribution of ion pumps and channels, e.g. Na^+/K^+ -ATPase on basal membranes, is one of the important features of apical-basal polarity in most epithelia. Recently, we discovered that mimicking the TEP imposed a polarity on single cells and epithelial sheets which suggests a functional role for the TEP as an extracellular signal that activates ERK1/2 and LKB1 in establishing apical-basal polarity in intestinal epithelium. Here, we will focus on insights into how the TEP as a guidance signal may link and coordinate the

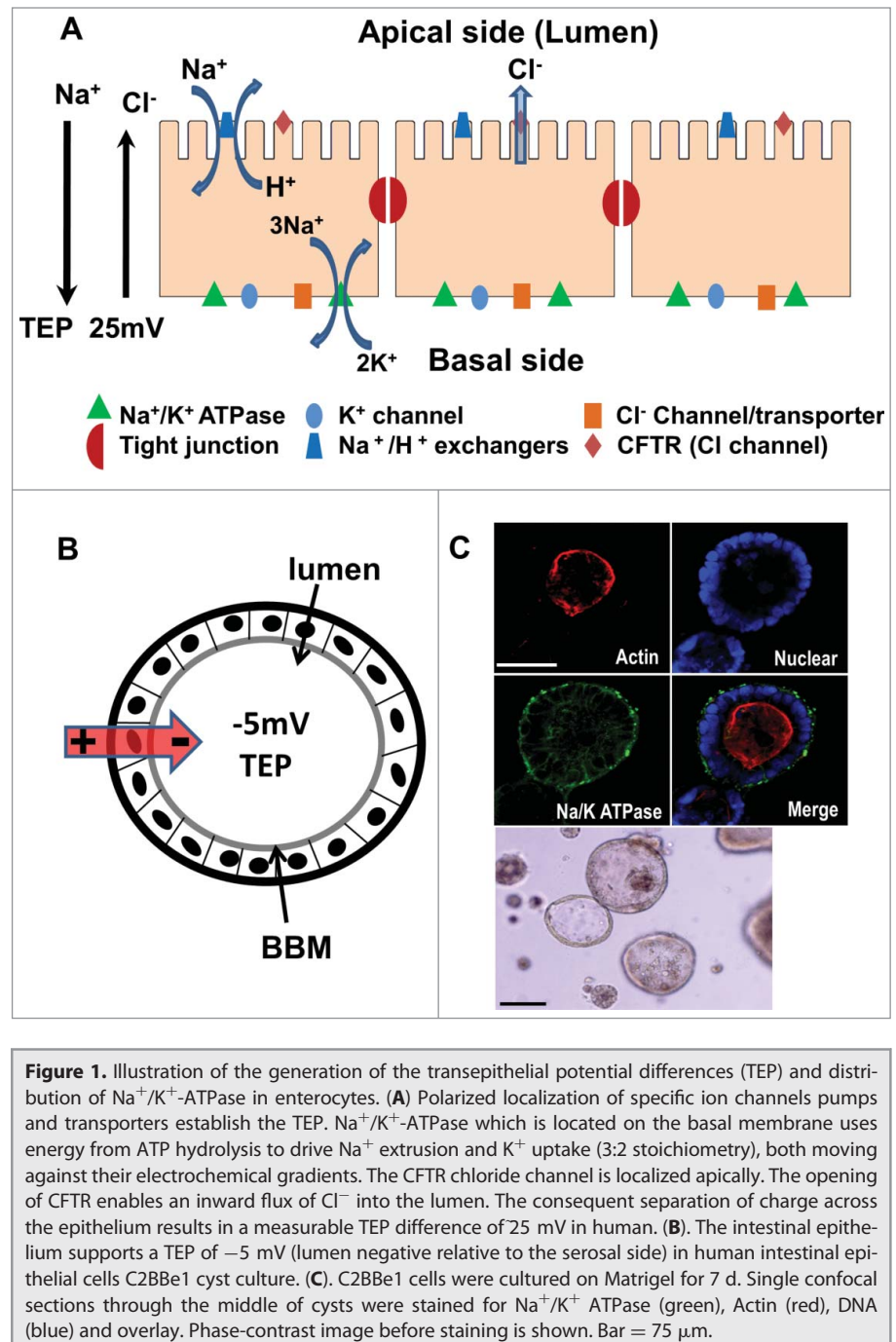
The formation of epithelial layers with apical-basal polarity is a fundamental process in the morphogenesis of many tissues including intestine, lung, skin and kidney. The polarity of epithelial cells involves apical and basolateral regions, with different molecular components and structure. Apical polarity proteins including a transmembrane protein (Crumbs), a lipid phosphatase (PTEN), a small GTPase (Cdc42), FERM (Band 4.1, Ezrin, Radixin and Moesin) domain proteins, and several adaptor or scaffolding proteins (Bazooka/Par3, Par6, Stardust, Patj) form a dynamic cooperative network that is

interactions in directed cell migration, wound healing and polarity of epithelia.

TEP- Guidance Cues in Cell Migration, Wound Healing and Neurite Growth

Epithelial cells generate electrical gradients within conductive extracellular spaces by polarized ions transport which separates ions between the apical and basal domains. The voltage gradient across the intestinal epithelium (TEP) is lumen side negative. This voltage gradient depends on 1) activation of selective ion channels, transporters and pumps restricted to the apical or basolateral membranes that establish ionic gradients across the epithelium and 2) tight junctions between neighboring cells in the intact epithelium which by electrically “sealing” the cells to each other limit paracellular movement of ions^{5,6} (Fig. 1A). For instance, the basal localization of the Na^+/K^+ -ATPase pumps drives sodium ions to the basal side (moving 3 Na^+ out and 2 K^+ into cells), thus generating a voltage drop between the basal and the luminal side.⁷ Na^+ influx through apical Na^+ -channels maintains homeostatic levels of cytosolic Na^+ , while Cl^- efflux from the apical membrane also may help to generate the internally positive TEP.⁸

Across human intestine therefore, there is a TEP of -25 ± 7 mV, lumen negative.⁹ This is the equivalent of a direct current (DC) electric field (EF) across the epithelial layer of around 500 mV/mm, since the epithelium of human intestine is about $50\mu\text{M}$ thick.⁹ The functional roles of the TEP in intestine are not fully understood. In other epithelia, damage to the high-resistance epithelial structure leads to short circuiting of the TEP and the flow of extracellular current out at a lesion site, e.g., in skin and cornea.^{5,10} The center of the epithelial wound is electrically negative with respect to the undamaged regions surrounding the wound edge.¹⁰ An applied EF signaling through PI3K/PTEN predominated over coexisting chemical gradients in controlling wound healing in a monolayer scratch model.^{11,12} Fibroblasts from embryonic quail migrated directly toward the cathode



in an applied EF of 1–10 mV/mm field strength.^{13,14} In brain, we measured an extracellular bioelectrical signal of 3–5 mV/mm between the subventricular zone (SVZ) and the olfactory bulb (OB).¹⁵ Mimicking this with an applied EF induced directed/chain migration of neuroblasts cathodally,¹⁶ while astrocytes and Schwann cells show oriented growth in EFs as low as 3 mV/mm and Schwann cells migrate rapidly anodally.^{17,18} Defects

in neuronal migration may lead to important diseases including lissencephaly, epilepsy and mental retardation.^{19–21} An applied EF also stimulates neuronal cells to differentiate into neurons by sending out neurites.²² It is as though the cells need an external directional signal in order to begin the highly polarized process of neurite formation. The fields of negative polarity attract the growth cone, whereas fields of positive polarity deflect the

growth cone away.²³ These findings suggest that extracellular EFs act as guidance cues in cell migration, wound healing and neuronal development/regeneration.

The TEP is an Orientation Signal that Coordinates Apical Polarity

In epithelia, the formation of adhesive contacts between cells and between cell–ECM are among the earliest steps in forming a functional tissue.²⁴ Shortly thereafter, the expression of basolateral membrane molecules of epithelium (e.g. Na^+/K^+ -ATPase) is triggered and generates the TEP (Fig. 1B, C). The TEP therefore is a tissue level signal generated soon after tight junction formation and basal polarization. Inhibition of Na^+/K^+ -ATPase reduced significantly the TEP²⁵ and abolished apical (lumen) actin polarity in 3D cyst culture of Caco-2 cells.² This suggested that the TEP as a basal signal could be a signal to mediate the apical polarization in gut. We reported recently that the natural extracellular bio-electrical signal across the intestinal epithelium (TEP) encodes epigenetically the information required for cell and tissue level polarization.⁴ We selected the LS174T-W4 cell line (supplied by Professor Clevers's lab, Hubrecht Institute, Netherlands) as a model of epithelial polarity in which the polarity orientation could be induced by an electrical signal. LS174T-W4 cells have some important features such as: (1) Complete polarization: LS174T-W4 cells develop an inducible expression of LKB1 and can form a brush border-like structure in single cell culture;^{26,27} (2). Lack of electrotaxis (no directed movement in an applied electric field): therefore making it impossible that polarized accumulation and reorientation

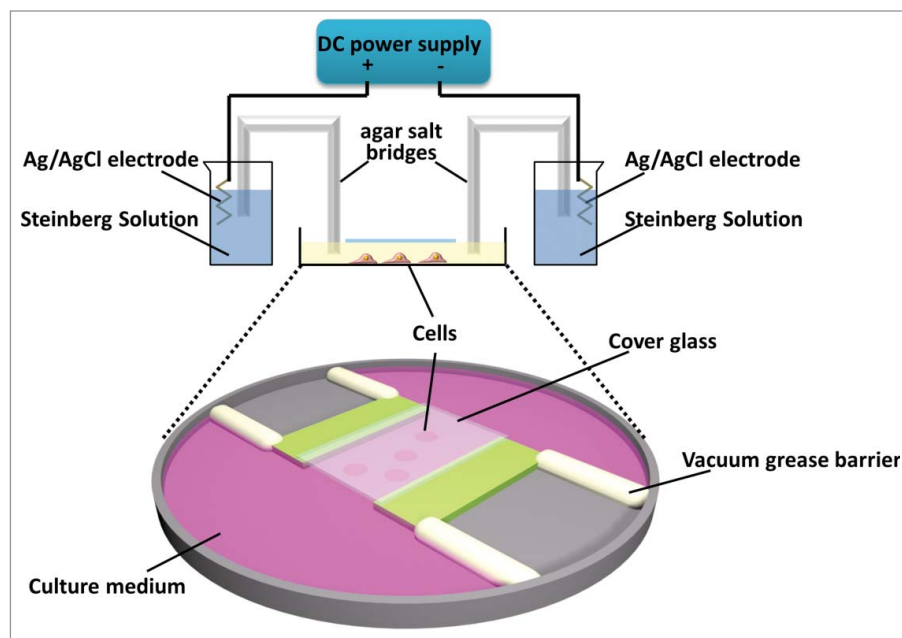


Figure 2. The device for applying electric fields to cells to mimic the TEP. Cells were exposed to a DC electric field applied across the central chamber. The cells were cultured under a cover slide and 2 agar salt bridges were used to connect the culture medium with the power supply, so as to eliminate toxic electrode products. The EF vector was parallel to the long axis of the chamber which was delineated by the two green strips of cover glass. This figure is derived from Cao et al, 2014.⁴

of some polarity markers, e.g., ezrin, actin and CD66 could result from a directed motility response to the applied EF; (3). No cell-cell tight junctions: thus excluding some factors which are associated with cell-cell connection as causal in polarity formation. By using this model, we identified that an applied EF (Fig. 2) which mimics the TEP could play a role to set-up orientation in apical-basal polarity of intestinal epithelial cells (Fig. 3A). Furthermore in transwell cultures, C2BBel cells established an electrical potential difference (TEP) across themselves by transporting ions that generate concentration gradients⁵ (Fig. 3C and D). Inhibition of ion transportation with ouabain and digoxin significantly reduced the TEP and

resulted in formation of the brush border membrane (BBM) being inhibited (Fig. 3D and E). These data support the notion that the TEP may serve as a coordinating signal in intestinal epithelial cell polarity, specifically by imposing apico-basal polarity to ensure the correct apical localization of the BBM in enterocytes.

Molecular Mechanisms Underpinning TEP-Induced Apical Polarity

Some secreted proteins e.g. Wnt proteins act as extracellular mechanisms to determine neuronal polarity along the anterior–posterior body axis.²⁸ Wnts as a

Table 1. Applied EF promote secretion of cytokines and other molecules

Name	EF	Frequency	Model	Reference
VEGF	200 mV/mm	DC	HUVEC	Zhao et al, 2004
Insulin and glucagon	50 V	5–20Hz	Normal and diabetic rats	Adeghate et al, 2001
Neurotrophic factor (BDNF)	15 V	50–100Hz	Hippocampal neurons	Gärtner and Staiger 2001
ATP	200 V/mm	DC	Chromaffin cells	Rojas et al, 1985
ATP	750 mV/mm	DC	Multicellular tumor spheroids	Heinrich et al, 2002
VEGF and IL-8	200 mV/mm	DC	Human endothelial cells	Bai et al, 2011

group of secreted, lipid-modified glycoproteins trigger intracellular responses through canonical or noncanonical pathways.²⁹ The Wnt5a protein is expressed in normal colon epithelium and the highest level of expression is at the base of the intestinal crypts.³⁰ Wnt5a interacts with the orphan tyrosine kinase receptor Ror2 to control planar cell polarity in epithelia. An applied EF can increase the secretion of proteins and other compounds e.g., VEGF, ATP and etc (Table 1).^{31,32} We recently showed that an applied EF effectively activated ERK1/2 and LKB1 in LS174T-W4 cells (Fig. 3B). Interruption of Ror2 and ERK1/2 significantly inhibited the activation of LKB1 which has been identified as a key molecule in inducing complete polarity in intestinal epithelial cells.^{4,26,33} This raises the possibility that the TEP could regulate the secretion of Wnt5a into the luminal side of intestine and there activate ERK1/2 and LKB1 through the Ror2 receptor.⁴

The Golgi complex in polarized epithelial cells is typically oriented toward the apical plasma membrane domain. The membrane proteins which are localized on the apical and basolateral aspects of epithelial cells are synthesized in the endoplasmic reticulum, transferred to the Golgi apparatus and segregated into different post-Golgi transport intermediates (PGTIs) for export to the cell surface.^{34–36} We have shown that the polarization of the Golgi apparatus in CHO cells is determined by an applied physiological EF.^{37,38} We found that the applied physiological EF induced the Golgi to redistribute to the cathode side/leading edge during directed migration of CHO cells and regulated the direction of this migration (Fig. 4). This suggests that the TEP in the lumen of gut may redistribute and organize the Golgi apparatus toward the lumen/apical side.³⁷ We shall investigate further whether the TEP is necessary in the establishment of gut epithelial polarity through Wnt5a/Ror2 signaling and Golgi polarity *in vivo*.

In addition, the Par3/Par6/aPKC complex is a master regulator of polarity.³⁹ PTEN also is associated with the apical membrane in the 3D structure of mammalian cells.⁴⁰ The physiological EFs can regulate the activation or

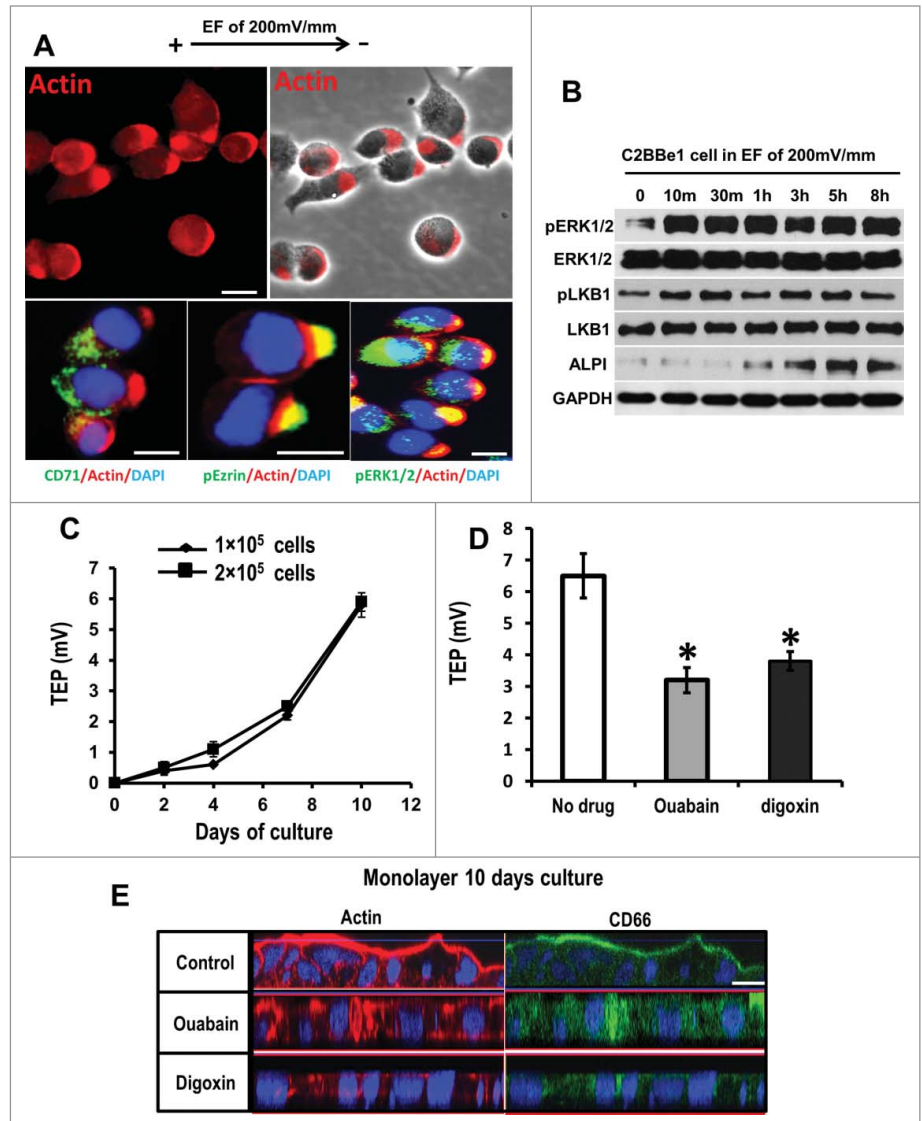


Figure 3. The role of the electric field in the apical-basal polarity of intestinal epithelial cells. (A) LS174T-W4 cells were treated with the applied electric field in a specific chamber which has been described in Figure 2 and Dox for 24 hours. Cells were fixed and stained with phalloidin (F-actin label indicative of apical membrane), DAPI and the basal membrane marker CD71, phosphorylated Ezrin and ERK1/2, respectively. Upper images: EF stimulation causes a polarization of F-actin on the cathodal side of the cells (at right). Lower images: polarized actin labeling faced the cathode and CD71 was localized selectively at the anode side. Actin and phosphorylated Ezrin or ERK1/2 colocalized and polarized toward the cathodal side of cells. Bar = 10 μ m. (B) The time course of EF-induced activation of pERK and pLKB1 and enhanced ALP1 expression in C2BBE1 cells. The expression of total ERK1/2 and LKB1 were not affected by EF. (C) C2BBE1 cells form tight junction complexes which allow the generation of a steady time-dependent increase of transepithelial potential difference (TEP) in insert monolayer cultures. The TEP keeps increasing over 10 d. (D) The TEP across the cyst wall was reduced significantly by Na⁺/K⁺-ATPase inhibitors (or TEP inhibitors), ouabain or digoxin. (E) Monolayer of C2BBE1 cells were cultured on a glass slides for 10 d. Confocal images (z-axis scanning) showed that the pronounced apical membrane architecture of C2BBE1 monolayers (upper, apical staining with phalloidin-TRITC and CD66) was disrupted by suppression of the TEP using the inhibitors ouabain and digoxin (lower). Bar = 20 μ m. GAPDH was loading control for western blot. Modified from figures in Cao et al, 2014.⁴

expression of cell polarity-related proteins including PKC, GSK-3 β and PTEN.^{11,37,41} Cdc42 is needed for

fusion of transport vesicles to the apical surface and creation of the lumen by controlling spindle orientation during

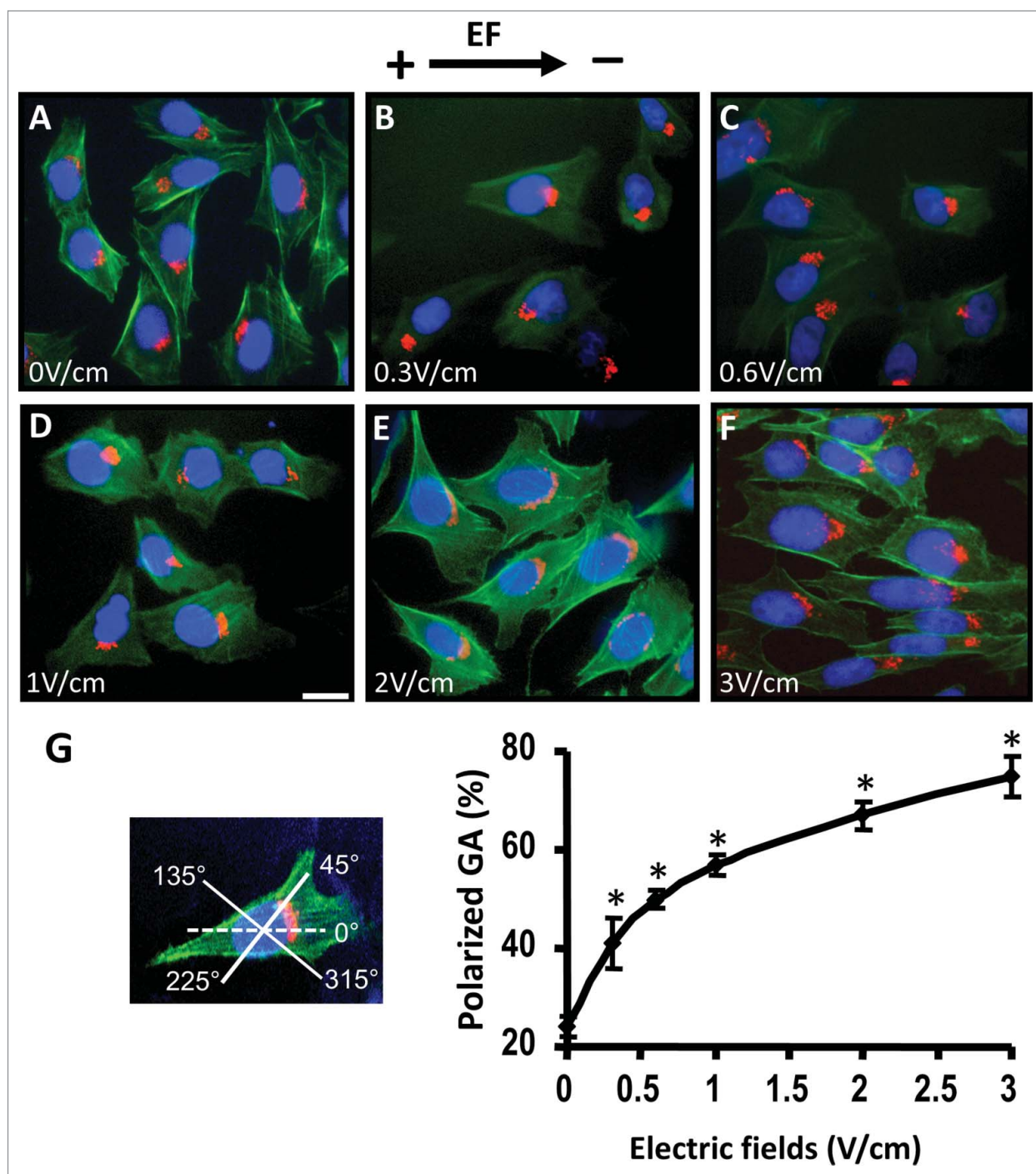


Figure 4. EFs of physiological strength directed Golgi apparatus (GA) polarization in CHO cells. (A–F) EFs were applied to CHO cells for 3 hours and then were fixed and triple-labeled with GM130 antibody (GA marker, red), FITC-phalloidin (F-actin, green) and DAPI (blue). Fluorescent images showed that the EF strongly polarized the Golgi toward the cathode/leading edge in voltage dependent manner. (G). GA polarization was quantified as the percentage of GA polarized into the quadrant between 45 and 315 degrees in the field direction as shown. * $P < 0.01$ compared to no EFs control. Bar = 20 μ m. The figure is derived from Cao et al, 2014.³⁷

cell division.^{2,40,42} An applied EF affected cell polarity and determined the directional growth in yeast cells through small GTPase *cdc42p*.⁴³ The applied EF also directed growth cone

cathodal steering through *Cdc42*.⁴⁴ These data all suggest that extracellular bioelectrical signals may contribute to the intracellular molecular mechanisms in the apical polarity formation.

In summary, correct polarization of enterocytes is critical for apical BBM formation and the directional absorptive and secretory functions of the gut. The physiological electrical signal in the extracellular

space acts as a robust, global signal to induce enterocyte polarization and apical BBM formation. New insights in apical-basal polarity may provide new avenues of research in epithelial disorders with a known involvement of barrier disruption, e.g. severe malnutrition and persistent osmotic diarrhea. The absence of apical-basal polarity in epithelia may lead also to cancer and polycystic kidney disease (Fischer et al., 2006; Royer and Lu, 2011). Regeneration of the BBM of intestine using an applied EF or as yet unidentified regulators of bioelectrical signal could prove to be an interesting field and raises the possibility of regulating the TEP as a therapeutic intervention to treat pathologies in a number of other epithelia.

Disclosure of Potential Conflicts of Interest

No potential conflicts of interest were disclosed.

Funding

This work was supported by University of Aberdeen, Friends of ANCHOR and Action Medical Research GN2199.

References

1. Tepass U. The apical polarity protein network in *Drosophila* epithelial cells: regulation of polarity, junctions, morphogenesis, cell growth, and survival. *Ann Rev Cell Dev Biol* 2012; 28:655-85; PMID:22881460; <http://dx.doi.org/10.1146/annurev-cellbio-092910-154033>
2. Jaffe AB, Kaji N, Durgan J, Hall A. Cdc42 controls spindle orientation to position the apical surface during epithelial morphogenesis. *J Cell Biol* 2008; 183:625-33; PMID:19001128; <http://dx.doi.org/10.1083/jcb.200807121>
3. Rajasekaran SA, Palmer LG, Moon SY, Peralta Soler A, Apodaca GL, Harper JF, Zheng Y, Rajasekaran AK. Na,K-ATPase activity is required for formation of tight junctions, desmosomes, and induction of polarity in epithelial cells. *Mol Biol Cell* 2001; 12:3717-32; PMID:11739775; <http://dx.doi.org/10.1091/mbc.12.12.3717>
4. Cao L, McCaig CD, Scott RH, Zhao S, Milne G, Clevers H, Zhao M, Pu J. Polarizing intestinal epithelial cells electrically through Ror2. *J Cell Sci* 2014; 127:3233-9; PMID:24928904; <http://dx.doi.org/10.1242/jcs.146357>
5. McCaig CD, Song B, Rajnicek AM. Electrical dimensions in cell science. *J Cell Sci* 2009; 122:4267-76; PMID:19923270; <http://dx.doi.org/10.1242/jcs.023564>
6. Achler C, Filmer D, Merte C, Drenckhahn D. Role of microtubules in polarized delivery of apical membrane proteins to the brush border of the intestinal epithelium. *J Cell Biol* 1989; 109:179-89; PMID:2568363; <http://dx.doi.org/10.1083/jcb.109.1.179>
7. Cooperstein IL, Brockman SK. The electrical potential difference generated by the large intestine: its relation to electrolyte and water transfer. *J Clin Invest* 1959; 38:435-42; PMID:13631076; <http://dx.doi.org/10.1172/JCI103818>
8. Reid B, Song B, McCaig CD, Zhao M. Wound healing in rat cornea: the role of electric currents. *Faseb J* 2005; 19:379-86; PMID:15746181; <http://dx.doi.org/10.1096/fj.04-2325com>
9. Archampong EQ, Edmonds CJ. Effect of luminal ions on the transepithelial electrical potential difference of human rectum. *Gut* 1972; 13:559-65; PMID:5069733; <http://dx.doi.org/10.1136/gut.13.7.559>
10. Zhao M. Electrical fields in wound healing-An overriding signal that directs cell migration. *Semin Cell Dev Biol* 2009; 20:674-82; PMID:19146969; <http://dx.doi.org/10.1016/j.semdb.2008.12.009>
11. Zhao M, Song B, Pu J, Wada T, Reid B, Tai G, Wang F, Guo A, Walczysko P, Gu Y, et al. Electrical signals control wound healing through phosphatidylinositol-3-OH kinase-gamma and PTEN. *Nature* 2006; 442:457-60; PMID:16871217; <http://dx.doi.org/10.1038/nature04925>
12. Rajnicek AM, Stump RF, Robinson KR. An endogenous sodium current may mediate wound healing in *Xenopus* neurulae. *Dev Biol* 1988; 128:290-9; PMID:2456234; [http://dx.doi.org/10.1016/0012-1606\(88\)90292-8](http://dx.doi.org/10.1016/0012-1606(88)90292-8)
13. Erickson CA, Nuccitelli R. Embryonic fibroblast motility and orientation can be influenced by physiological electric fields. *J Cell Biol* 1984; 98:296-307; PMID:6707093; <http://dx.doi.org/10.1083/jcb.98.1.296>
14. Nuccitelli R, Erickson CA. Embryonic cell motility can be guided by physiological electric fields. *Exp Cell Res* 1983; 147:195-201; PMID:6617761; [http://dx.doi.org/10.1016/0014-4827\(83\)90284-7](http://dx.doi.org/10.1016/0014-4827(83)90284-7)
15. Cao L, Wei D, Reid B, Zhao S, Pu J, Pan T, Yamoah E, Zhao M. Endogenous electric currents might guide rostral migration of neuroblasts. *EMBO Rep* 2013; 14:184-90; PMID:23328740; <http://dx.doi.org/10.1038/embor.2012.215>
16. Cao L, Pu J, Scott RH, Ching J, McCaig CD. Physiological electrical signals promote chain migration of neuroblasts by Up-Regulating P2Y1 purinergic receptors and enhancing cell adhesion. *Stem Cell Rev* 2015; 11:75-86; PMID:25096637; <http://dx.doi.org/10.1007/s12015-014-9524-1>
17. Moriarty LJ, Borgens RB. An oscillating extracellular voltage gradient reduces the density and influences the orientation of astrocytes in injured mammalian spinal cord. *J Neurocytol* 2001; 30:45-57; PMID:11577245; <http://dx.doi.org/10.1023/A:1011917424450>
18. McKasson MJ, Huang L, Robinson KR. Chick embryonic Schwann cells migrate anodally in small electrical fields. *Exp Neurol* 2008; 211:585-7; PMID:18396278; <http://dx.doi.org/10.1016/j.expneurol.2008.02.015>
19. Dobyns WB, Elias ER, Newlin AC, Pagon RA, Ledbetter DH. Causal heterogeneity in isolated lissencephaly. *Neurology* 1992; 42:1375-88; PMID:1620349; <http://dx.doi.org/10.1212/WNL.42.7.1375>
20. Wynshaw-Boris A, Gambello MJ, LIS1 and dynein motor function in neuronal migration and development. *Genes Dev* 2001; 15:639-51; PMID:11274050; <http://dx.doi.org/10.1101/gad.886801>
21. Dobyns WB, Andermann E, Andermann F, Czapanky-Beilman D, Dubeau F, Dulac O, Guerrini R, Hirsch B, Ledbetter DH, Lee NS, et al. X-linked malformations of neuronal migration. *Neurology* 1996; 47:331-9; PMID:8757001; <http://dx.doi.org/10.1212/WNL.47.2.331>
22. Robinson KR. The responses of cells to electrical fields: a review. *J Cell Biol* 1985; 101:2023-7; PMID:3905820; <http://dx.doi.org/10.1083/jcb.101.6.2023>
23. Patel NB, Poo MM. Perturbation of the direction of neurite growth by pulsed and focal electric fields. *J Neurosci* 1984; 4:2939-47; PMID:6502213
24. Shin K, Fogg VC, Margolis B. Tight junctions and cell polarity. *Ann Rev Cell Dev Biol* 2006; 22:207-35; PMID:16771626; <http://dx.doi.org/10.1146/annurev.cellbio.22.010305.104219>
25. Tran V, Zhang X, Cao L, Li H, Lee B, So M, Sun Y, Chen W, Zhao M. Synchronization modulation increases transepithelial potentials in MDCK monolayers through Na/K pumps. *PLoS One* 2013; 8:e61509; PMID:23585907; <http://dx.doi.org/10.1371/journal.pone.0061509>
26. Baas AF, Kuipers J, van der Wel NN, Batlle E, Koerten HK, Peters PJ, Clevers HC. Complete polarization of single intestinal epithelial cells upon activation of LKB1 by STRAD. *Cell* 2004; 116:457-66; PMID:15016379; [http://dx.doi.org/10.1016/S0092-8674\(04\)00114-X](http://dx.doi.org/10.1016/S0092-8674(04)00114-X)
27. ten Klooster JP, Jansen M, Yuan J, Oorschot V, Begthel H, Di Giacomo V, Colland F, de Koning J, Maurice MM, Hornbeck P, et al. Mst4 and Ezrin induce brush borders downstream of the Lkb1/Strad/Mo25 polarization complex. *Dev Cell* 2009; 16:551-62; PMID:19386264; <http://dx.doi.org/10.1016/j.devcel.2009.01.016>
28. Hilliard MA, Bargmann CI. Wnt signals and frizzled activity orient anterior-posterior axon outgrowth in *C. elegans*. *Dev Cell* 2006; 10:379-90; PMID:16516840; <http://dx.doi.org/10.1016/j.devcel.2006.01.013>
29. Logan CY, Nusse R. The Wnt signaling pathway in development and disease. *Ann Rev Cell Dev Biol* 2004; 20:781-810; PMID:15473860; <http://dx.doi.org/10.1146/annurev.cellbio.20.010403.113126>
30. Dejmeck J, Dejmeck A, Sahlholm A, Sjolander A, Andersson T. Wnt-5a protein expression in primary ductal B colon cancers identifies a subgroup of patients with good prognosis. *Cancer Res* 2005; 65:9142-6; PMID:16230369; <http://dx.doi.org/10.1158/0008-5472.CAN-05-1710>
31. Dunning-Davies BM, Fry CH, Mansour D, Ferguson DR. The regulation of ATP release from the urothelium by adenosine and transepithelial potential. *BJU Int* 2013; 111:505-13; PMID:22882496; <http://dx.doi.org/10.1111/j.1464-410X.2012.11421.x>
32. Zhao M, Bai H, Wang E, Forrester JV, McCaig CD. Electrical stimulation directly induces pre-angiogenic responses in vascular endothelial cells by signaling through VEGF receptors. *J Cell Sci* 2004; 117:397-405; PMID:14679307; <http://dx.doi.org/10.1242/jcs.00868>
33. Boudeau J, Sapkota G, Alessi DR. LKB1, a protein kinase regulating cell proliferation and polarity. *FEBS Lett* 2003; 546:159-65; PMID:12829253; [http://dx.doi.org/10.1016/S0014-5793\(03\)00642-2](http://dx.doi.org/10.1016/S0014-5793(03)00642-2)
34. Rodriguez-Boulton E, Nelson WJ. Morphogenesis of the polarized epithelial cell phenotype. *Science* 1989; 245:718-25; PMID:2672330; <http://dx.doi.org/10.1126/science.2672330>
35. Simons K, Wandinger-Ness A. Polarized sorting in epithelia. *Cell* 1990; 62:207-10; PMID:2196994; [http://dx.doi.org/10.1016/0092-8674\(90\)90357-K](http://dx.doi.org/10.1016/0092-8674(90)90357-K)
36. Keller P, Toomre D, Diaz E, White J, Simons K. Multicolour imaging of post-Golgi sorting and trafficking in live cells. *Nat Cell Biol* 2001; 3:140-9; PMID:11175746; <http://dx.doi.org/10.1038/35055042>
37. Cao L, Pu J, Zhao M. GSK-3beta is essential for physiological electric field-directed Golgi polarization and optimal electrotransport. *Cell Mol Life Sci* 2011; 68:3081-93; PMID:21207103; <http://dx.doi.org/10.1007/s00018-010-0608-z>
38. Pu J, Zhao M. Golgi polarization in a strong electric field. *J Cell Sci* 2005; 118:1117-28; PMID:15728257; <http://dx.doi.org/10.1242/jcs.01646>
39. Martin-Belmonte F, Mostov K. Regulation of cell polarity during epithelial morphogenesis. *Curr Opin Cell Biol* 2008; 20:227-34; PMID:18282696; <http://dx.doi.org/10.1016/j.ceb.2008.01.001>
40. Martin-Belmonte F, Gassama A, Datta A, Yu W, Rescher U, Gerke V, Mostov K. PTEN-mediated apical segregation of phosphoinositides controls epithelial morphogenesis through Cdc42. *Cell* 2007; 128:383-

- 97; PMID:17254974; <http://dx.doi.org/10.1016/j.cell.2006.11.051>
41. Pullar CE, Isseroff RR, Nuccitelli R. Cyclic AMP-dependent protein kinase A plays a role in the directed migration of human keratinocytes in a DC electric field. *Cell Motil Cytoskeleton* 2001; 50:207-17; PMID:11807941; <http://dx.doi.org/10.1002/cm.10009>
42. Gassama-Diagne A, Yu W, ter Beest M, Martin-Belmonte F, Kierbel A, Engel J, Mostov K. Phosphatidylinositol-3,4,5-trisphosphate regulates the formation of the basolateral plasma membrane in epithelial cells. *Nat Cell Biol* 2006; 8:963-70; PMID:16921364; <http://dx.doi.org/10.1038/ncb1461>
43. Kalinina IM, Krstic V, Tolic-Norrelykke IM. Cell polarity: which way to grow in an electric field? *Curr Biol* 2010; 20:R355-6; PMID:21749953; <http://dx.doi.org/10.1016/j.cub.2010.03.022>
44. Rajnicek AM, Foubister LE, McCaig CD. Temporally and spatially coordinated roles for Rho, Rac, Cdc42 and their effectors in growth cone guidance by a physiological electric field. *J Cell Sci* 2006; 119:1723-35; PMID:16595546; <http://dx.doi.org/10.1242/jcs.02896>