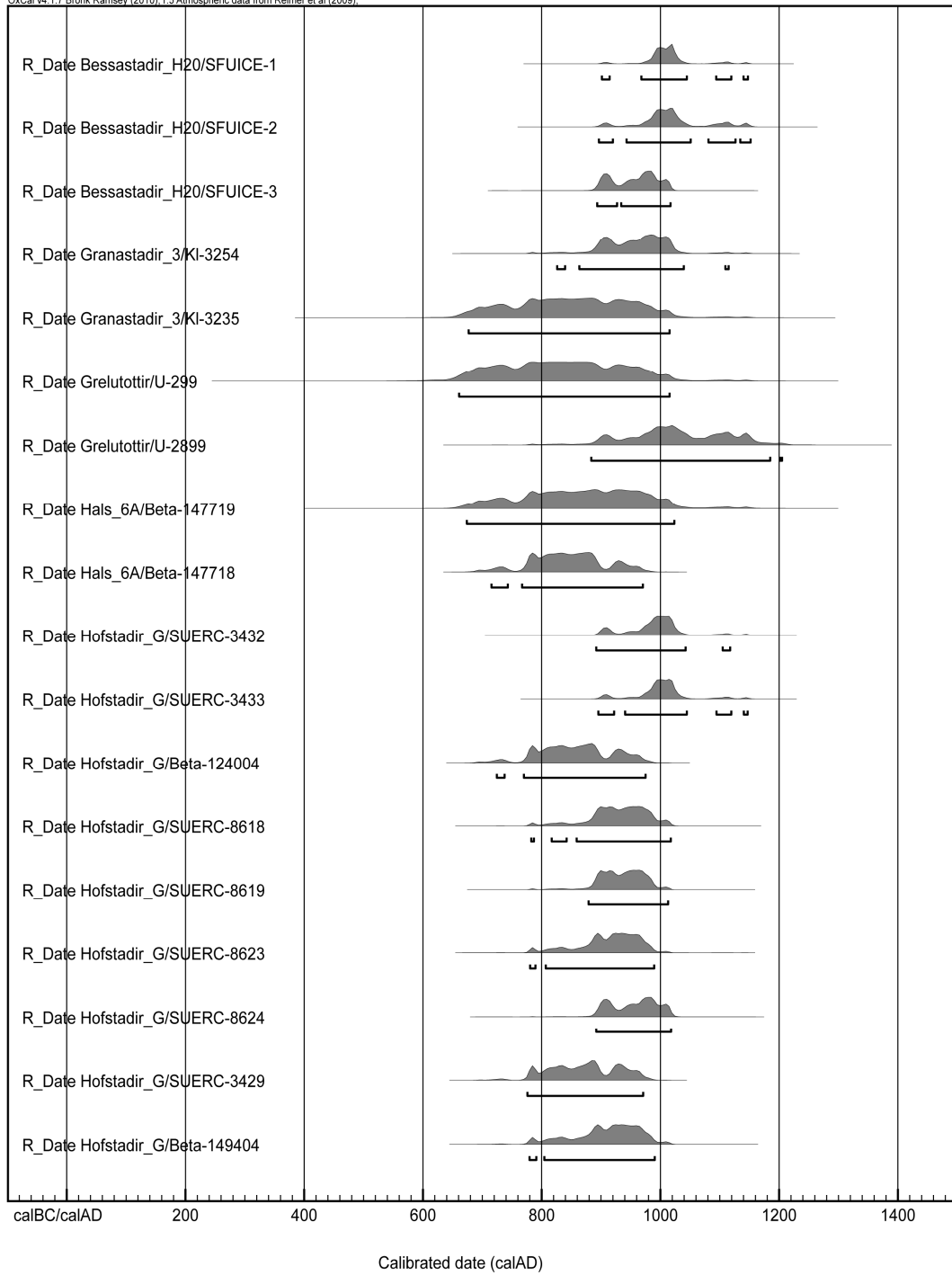


FIG 1

Map of Iceland, showing the locations of all pit houses excavated to date

Bessastaðir (1), Eiríksstaðir (2), Gjáskógar (3), Granastaðir (4), Grelutóttir (5), Háls (6), Hjálmsstaðir (7), Hofstaðir (8), Hólmur (9), Hrísheimar (10), Hvítárholt (11), Ljótólfsstaðir (12), Stóraborg (13), Sveigakot (14) and Vatnsfjörður (15).



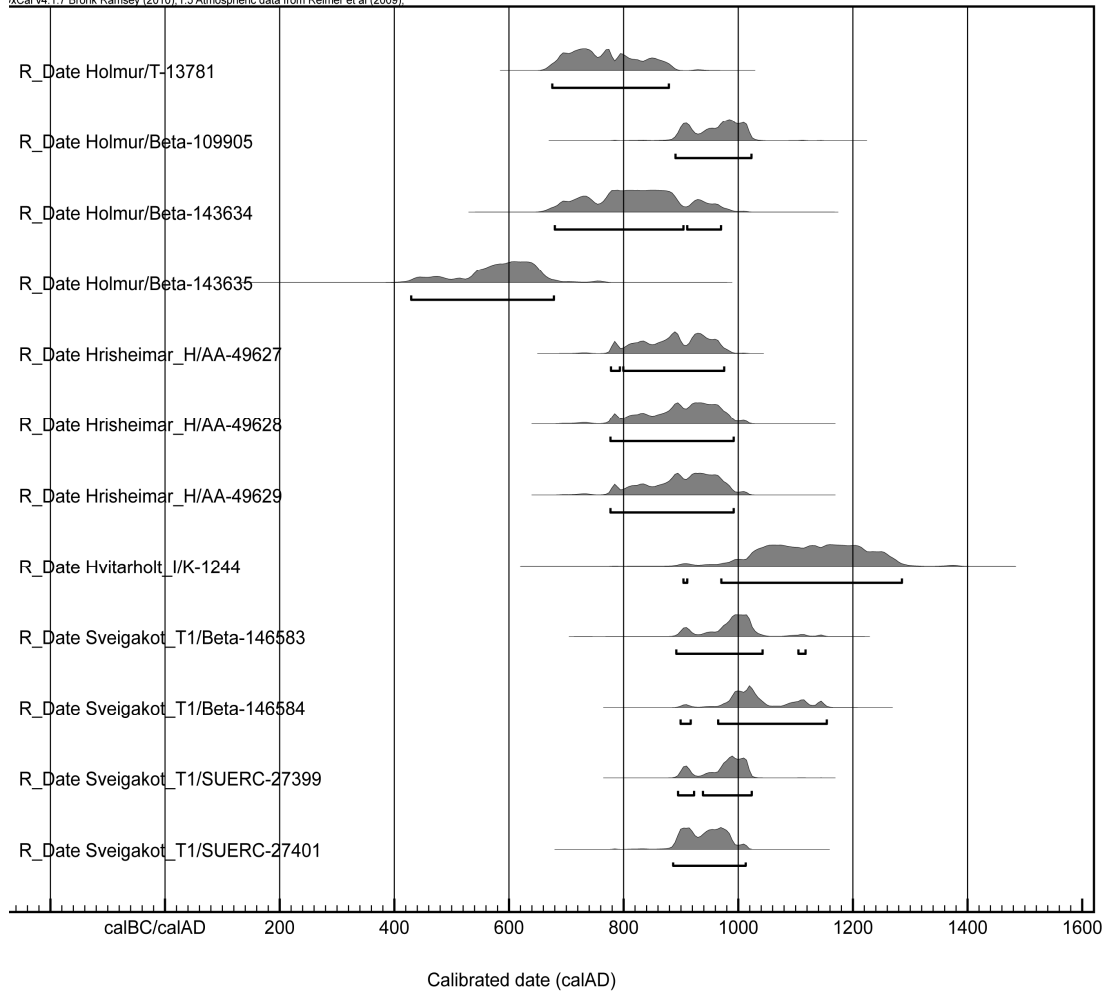


FIG 2
Radiocarbon dates for pit houses in Iceland

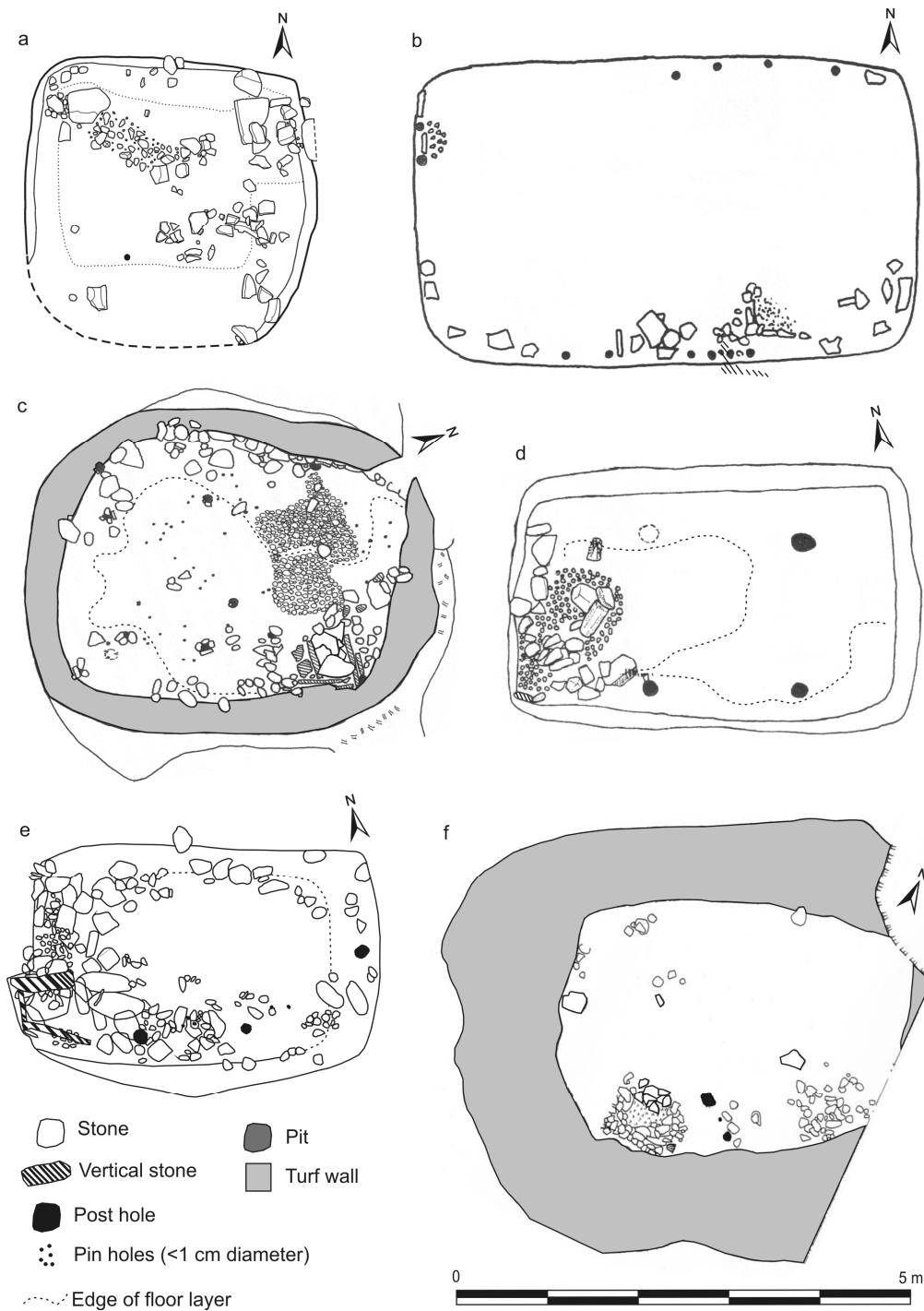


FIG 3
Plans of Viking Age pit houses in Iceland

(a) Eiríksstaðir. Drawing by Guðmundur Ólafsson, © Guðmundur Ólafsson. (b) Gjáskógar. Drawing by Kristján Eldjárn, © Árbók hins íslenska fornleifafélags 1961. (c) Granastaðir 3. Drawing by Bjarni Einarsson, © Bjarni Einarsson 1992. (d-e) Grelutóttir I and II respectively. Drawings by the author after originals by Guðmundur Ólafsson, © Guðmundur Ólafsson and Árbók hins íslenska fornleifafélags 1980. (f) Háls 6A. Drawing by the author after an original by Kevin P Smith, © Kevin P Smith. Used with permission.

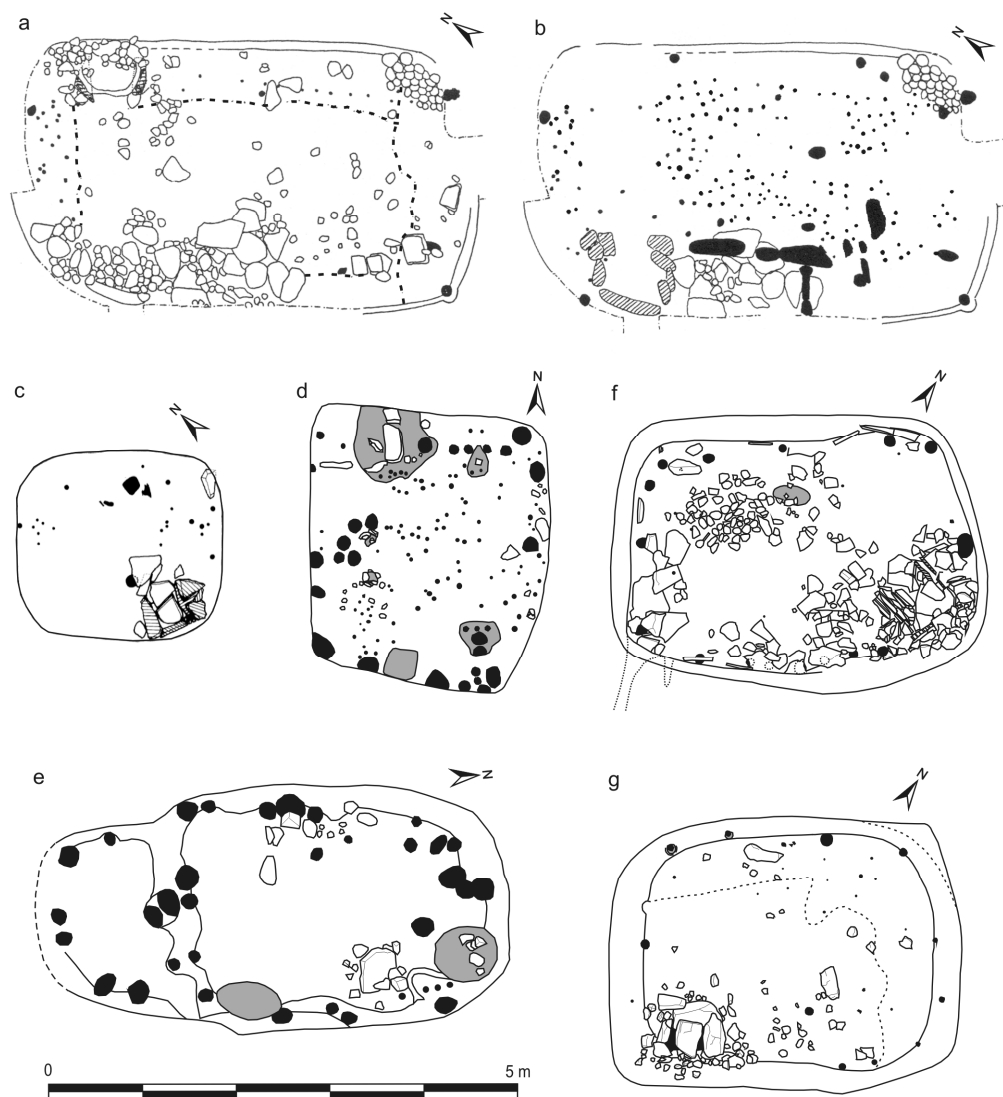


FIG 4
Plans of Viking Age pit houses in Iceland

(a-b) Hjalmsstaðir phases 1 and 2 respectively. *Drawings by the author after originals by Guðmundur Ólafsson, © Guðmundur Ólafsson and Árnésingur 1992.* (c) Hólmur. *Drawing by Bjarni Einarsson, © Bjarni Einarsson 2000.* (d-e) Hrísheimar C and H respectively. *Drawings by the author after originals by Ragnar Edvardsson, © Ragnar Edvardsson and Fornleifastofnun Íslands 2005.* (e-f) Hvítárholt I and IV respectively. *Drawing by the author after originals by Þór Magnússon, © Þór Magnússon and Árbók hins íslenska fornleifafélags 1973. Used with permission.*

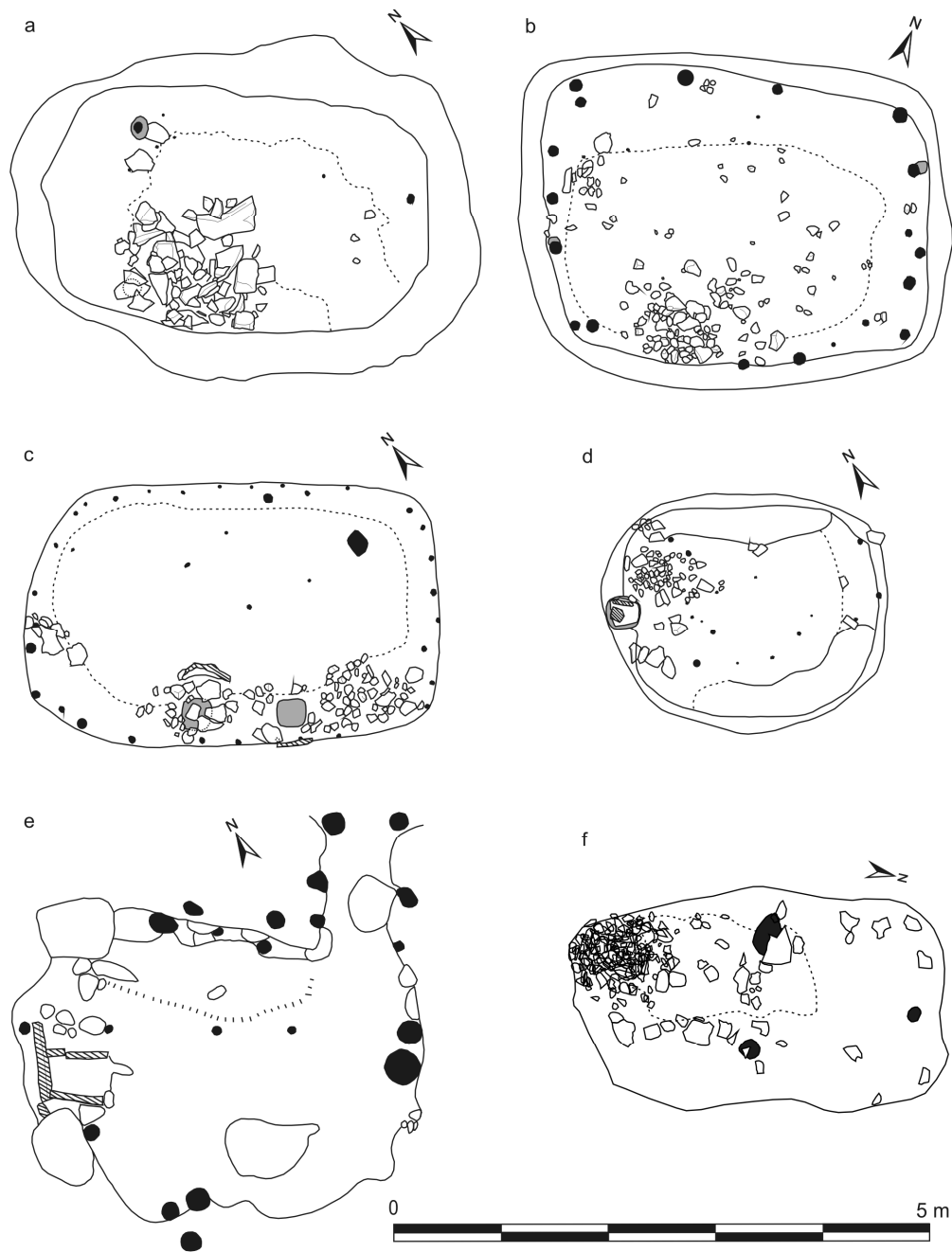


FIG 5
Plans of Viking Age pit houses in Iceland

(a-c) Hvitárholt V, VII and X respectively. *Drawings by the author after originals by Þór Magnússon, © Þór Magnússon and Árbók hins íslenska fornleifafélags 1973.* (d) Stóraborg. *Drawing by Mjöll Snæsdóttir, © Mjöll Snæsdóttir and Árbók hins íslenska fornleifafélags 1992.* (e) Sveigakot T1 phase 3. *Drawing by the author after an original by Przemysław Urbańczyk © Fornleifastofnun Íslands 2002.* (f) Vatnsfjörður 10. *Drawing by the author, © the author and Fornleifastofnun Íslands 2010. Used with permission.*

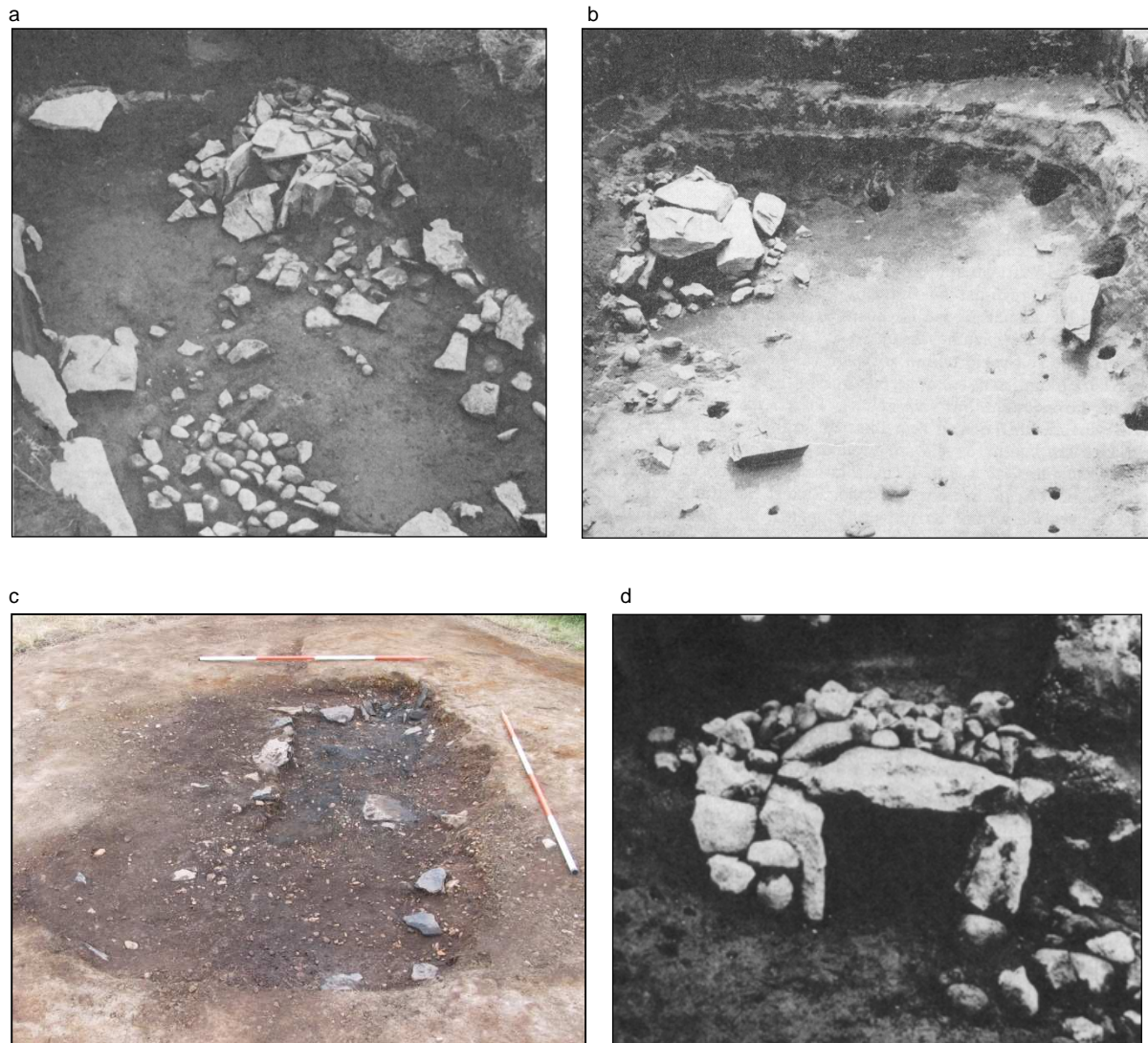


FIG 6

Examples of Icelandic pit houses and their corner ovens

(a-b) Hvítárholt I and IV respectively, with heated stones and pin holes visible. *Photographs by Þór Magnússon, © Þór Magnússon and Árbok hins íslenska fornleifafélags 1973.* (c) Vatnsfjörður 10 phase 2, with a stone-edged platform on the left side, a black charcoal-rich floor layer on the right side and the base of the oven in the far right corner. The oven had collapsed and the flat stones that had lined its sides were removed with other post-abandonment layers. *Photograph by the author, © the author and Fornleifastofnun Íslands 2010.* (d) Oven of Hjálmsstaðir phase 1. *Photograph by Guðmundur Ólafsson, © Guðmundur Ólafsson and Árnesingur 1992. Used with permission.*

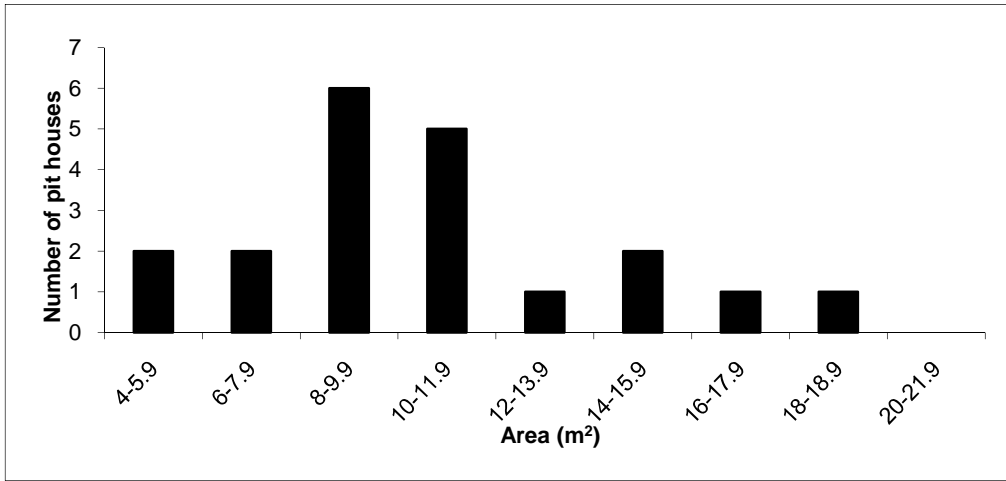


FIG 7
Sizes of pit houses in Iceland

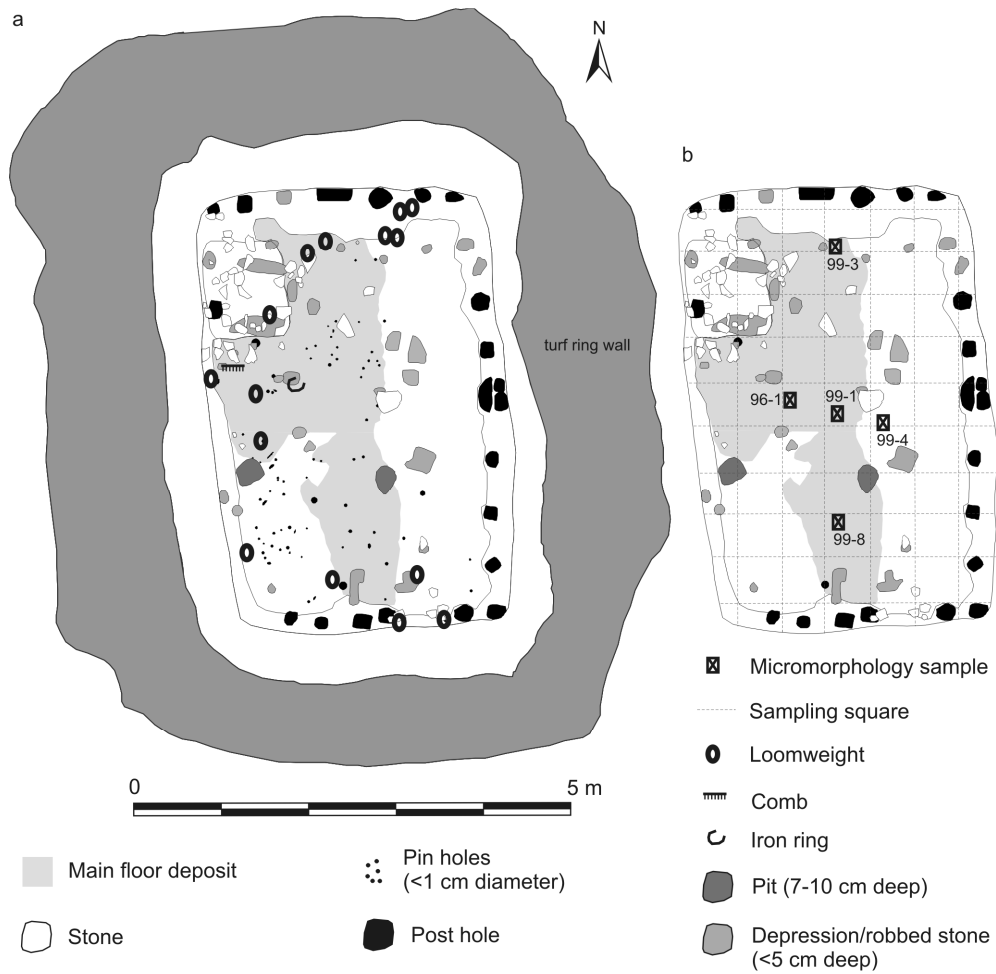


FIG 8
Plans of pit house G at Hofstaðir in Mývatnssveit

(a) Distribution of artefacts on the floor of Hofstaðir G. (b) Locations of micromorphology samples and the bulk sample grid. *Drawings by the author after an original by Gavin Lucas, © the author and Fornleifastofnun Íslands 2009.*

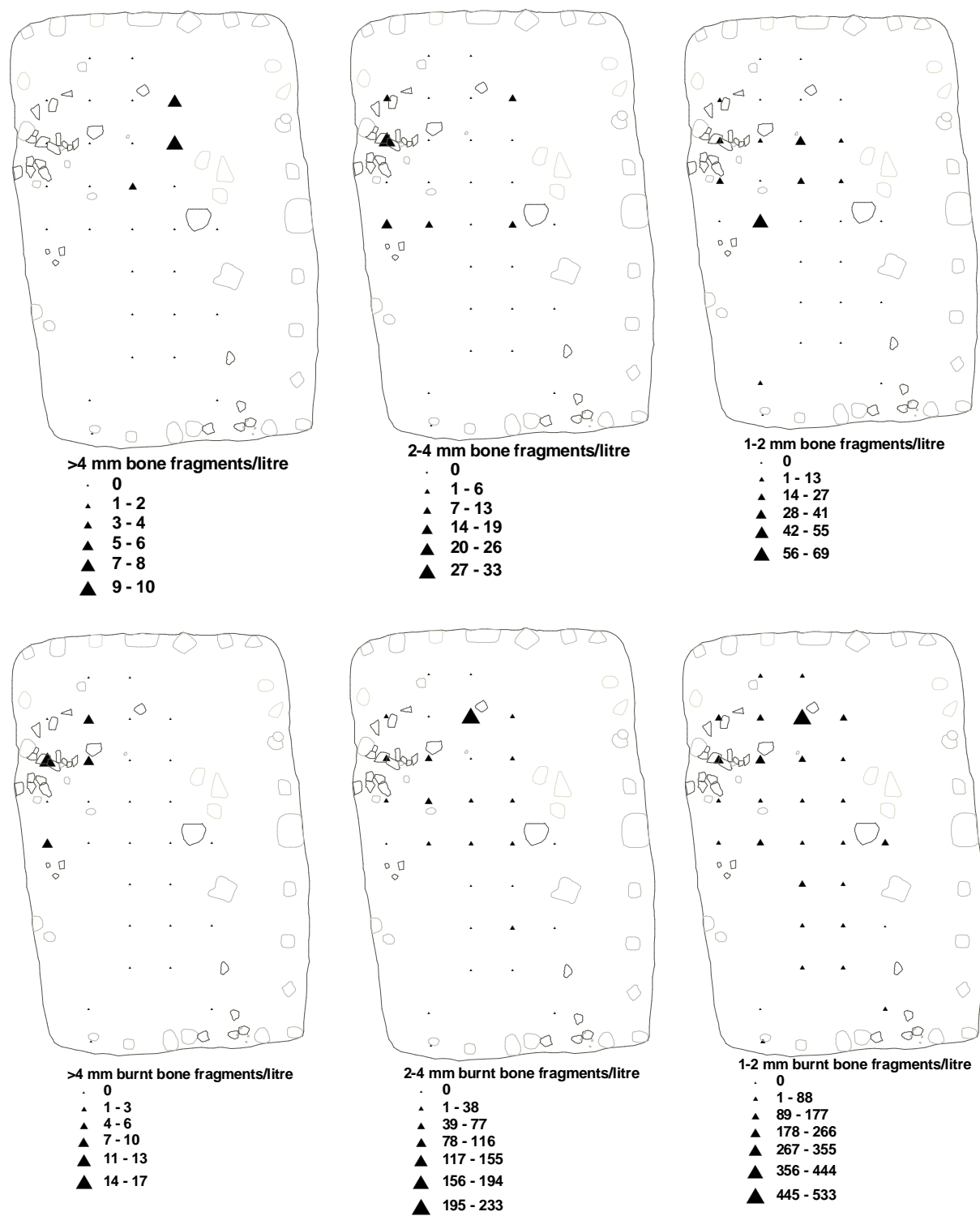


FIG 9

Distribution of bone and burnt bone fragments in Hofstaðir G floor context 9

Note that sampling squares without a dot represent those for which there was too little floor sediment to do microrefuse analysis.

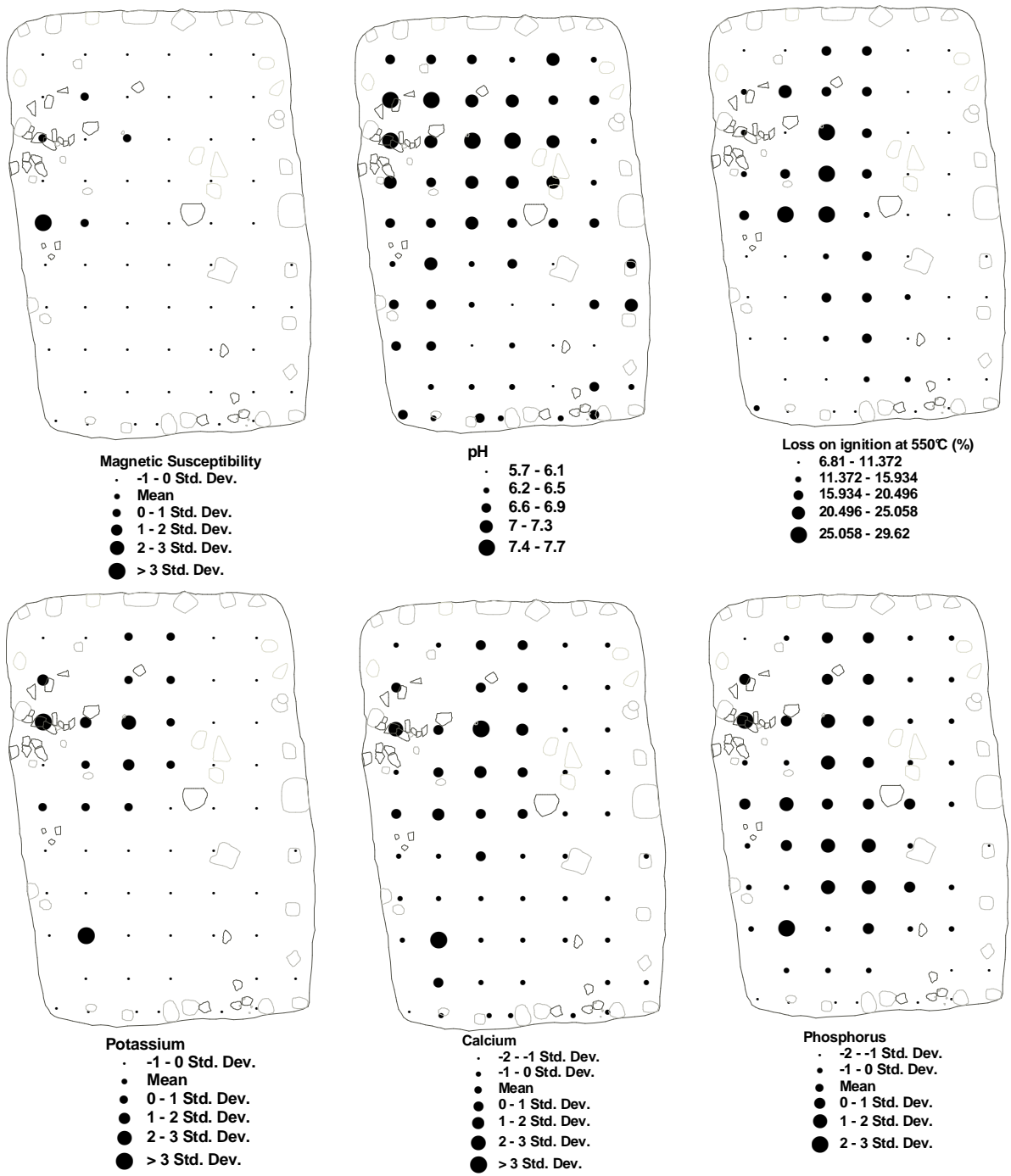


FIG 10
 Distribution of magnetic susceptibility, pH, loss-on-ignition, potassium, calcium, and total phosphorus values on the floor of Hofstaðir G

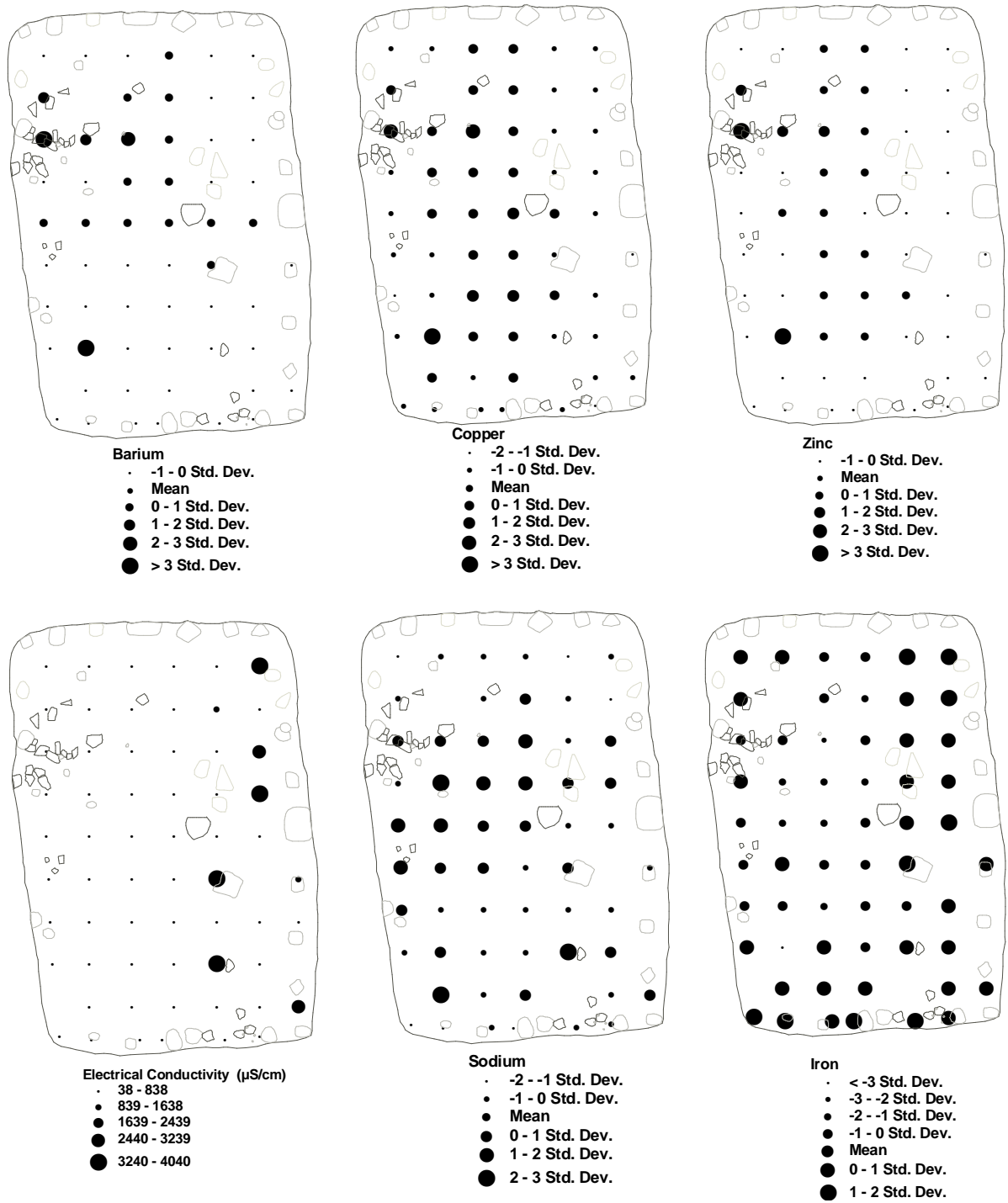


FIG 11
 Distribution of barium, copper, zinc, sodium, iron, and electrical conductivity (a proxy for soluble salts) on the floor of Hofstaðir G

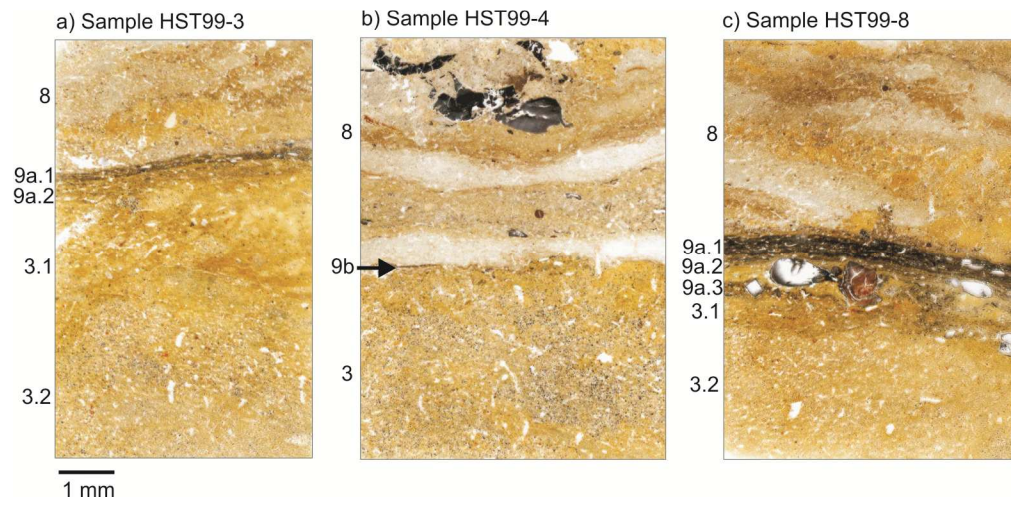
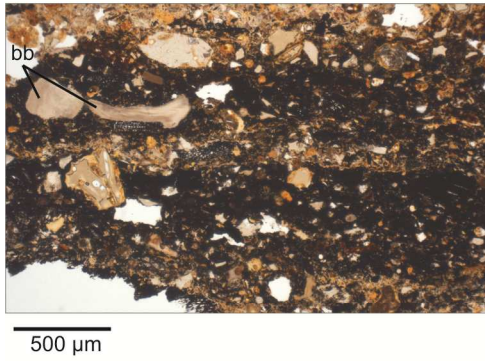


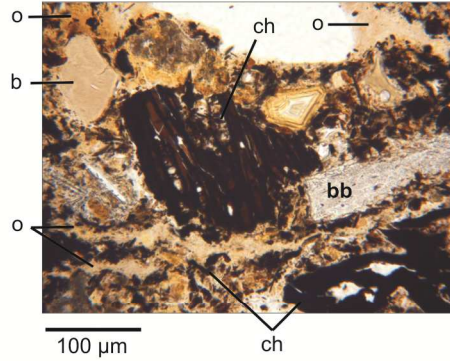
FIG 12
Three thin sections from the basal deposits of Hofstaðir G

Context numbers are divided into microstratigraphic units where necessary. Context 8: turf roof collapse, 9: floor deposit, 3: natural soils underlying the cut of the pit house.

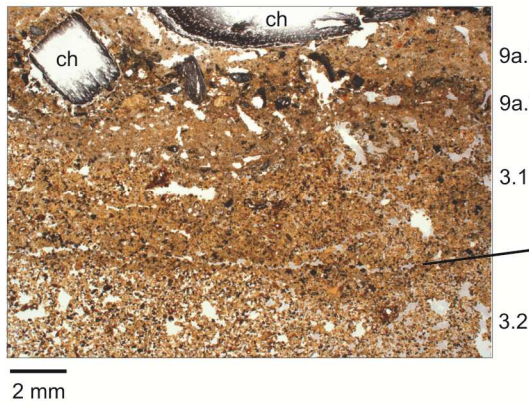
a) Context 9a.1, Sample HST99-8



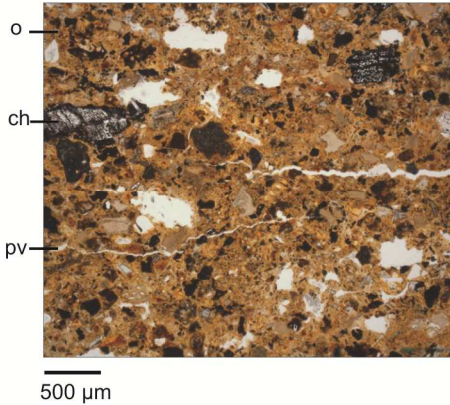
b) Context 9a.1, Sample HST99-3



c) Contexts 9a.2-3.2, Sample HST99-8



d) Context 9a.2, Sample HST99-3



e) Contexts 8-3, Sample HST99-4



f) Context 9b, Sample HST99-4

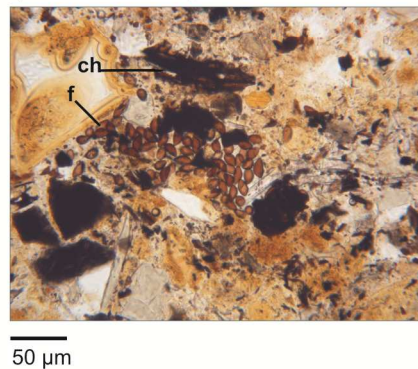


FIG 13
Photographs of thin sections from Hofstaðir G

b: bone, bb: burnt bone, ch: charcoal, f: fungal spores, o: amorphous organic matter, pv: planar voids.

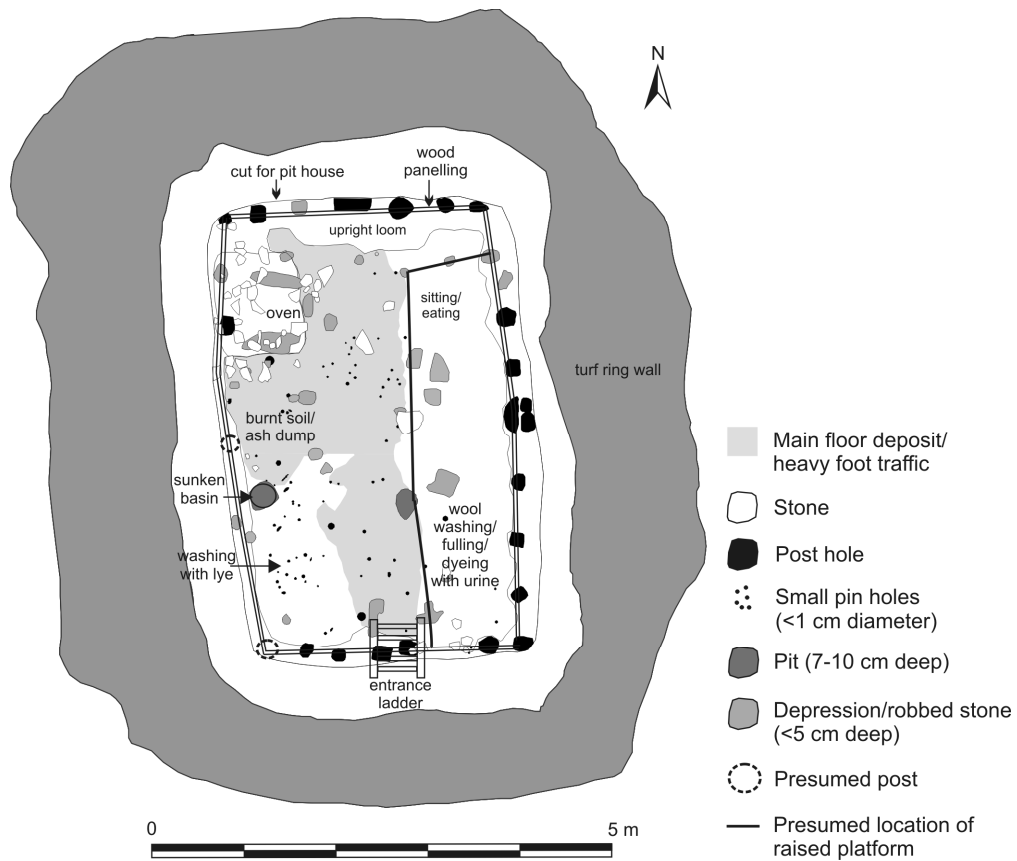


Fig 14
 Interpretive plan of Hofstaðir G. *Drawing by the author after an original by Gavin Lucas, © the author and Fornleifastofnun Íslands 2009.*