

NUTRITIONAL ENDOCRINOLOGY

A single supplement of a standardised bilberry (*Vaccinium myrtillus* L.) extract (36 % wet weight anthocyanins) modifies glycaemic response in individuals with type 2 diabetes controlled by diet and lifestyle

Nigel Hoggard^{1*}, Morven Cruickshank¹, Kim-Marie Moar¹, Charles Bestwick¹, Jens J. Holst², Wendy Russell¹ and Graham Horgan³

¹Rowett Institute of Nutrition and Health, University of Aberdeen, Aberdeen Centre for Energy Regulation and Obesity (ACERO), Bucksburn, Aberdeen AB21 9SB, UK

²The NNF Centre for Basic Metabolic Research, Department of Biomedical Sciences, The Panum Institute, University of Copenhagen, Copenhagen, Denmark

³Biomathematics and Statistics Scotland, Bucksburn, Aberdeen AB21 9SB, UK

(Received 20 February 2013 – Final revision received 25 April 2013 – Accepted 4 May 2013)

Journal of Nutritional Science (2013), vol. 2, e22, page 1 of 9

doi:10.1017/jns.2013.16

Abstract

Dietary strategies for alleviating health complications associated with type 2 diabetes (T2D) are being pursued as alternatives to pharmaceutical interventions. Berries such as bilberries (*Vaccinium myrtillus* L.) that are rich in polyphenols may influence carbohydrate digestion and absorption and thus postprandial glycaemia. In addition, berries have been reported to alter incretins as well as to have antioxidant and anti-inflammatory properties that may also affect postprandial glycaemia. The present study investigated the acute effect of a standardised bilberry extract on glucose metabolism in T2D. Male volunteers with T2D (n 8; BMI 30 (SD 4) kg/m²) controlling their diabetes by diet and lifestyle alone were given a single oral capsule of either 0.47 g standardised bilberry extract (36 % (w/w) anthocyanins) which equates to about 50 g of fresh bilberries or placebo followed by a polysaccharide drink (equivalent to 75 g glucose) in a double-blinded cross-over intervention with a 2-week washout period. The ingestion of the bilberry extract resulted in a significant decrease in the incremental AUC for both glucose ($P = 0.003$) and insulin ($P = 0.03$) compared with the placebo. There was no change in the gut (glucagon-like peptide-1, gastric inhibitory polypeptide), pancreatic (glucagon, amylin) or anti-inflammatory (monocyte chemoattractant protein-1) peptides. In addition there was no change in the antioxidant (Trolox equivalent antioxidant capacity, ferric-reducing ability of plasma) responses measured between the volunteers receiving the bilberry extract and the placebo. In conclusion the present study demonstrates for the first time that the ingestion of a concentrated bilberry extract reduces postprandial glycaemia and insulin in volunteers with T2D. The most likely mechanism for the lower glycaemic response involves reduced rates of carbohydrate digestion and/or absorption.

Key words: Bilberries; Anthocyanins; Type 2 diabetes; Glycaemic response

Dietary strategies for alleviating health complications, such as premature vascular disease, associated with type 2 diabetes (T2D) and obesity are actively being pursued as alternatives to pharmaceutical interventions⁽¹⁾. The genus *Vaccinium* (for example, blueberry, bilberry, cranberry) has been used

traditionally as a source of folk remedies for established diabetic symptoms.

Berries from this genus are rich in anthocyanins, polyphenols recognised for their ability to provide and activate cellular antioxidant protection and inhibit inflammatory gene

Abbreviations: AUC_i, incremental AUC; FRAP, ferric-reducing ability of plasma; GIP, gastric inhibitory polypeptide; GLP-1, glucagon-like peptide-1; MCP-1, monocyte chemoattractant protein-1; OGTT, oral glucose tolerance test; T2D, type 2 diabetes; TEAC, Trolox equivalent antioxidant capacity.

* **Corresponding author:** Dr Nigel Hoggard, fax +44 1224 438629, email N.Hoggard@abdn.ac.uk



expression^(2–4), activities that may contribute to the efficacy of the *Vaccinium* genus as ameliorators for T2D. Consumption of a freeze-dried blueberry beverage for an 8-week period, for example, decreased plasma concentrations of the cardiovascular risk factors oxidised LDL, malondialdehyde and hydroxynonenal. In another trial, bioactives from blueberries improved insulin sensitivity in obese insulin-resistant men and women^(5,6). In both these studies the investigators reported no change in inflammatory markers following supplementation although bilberry juice was shown to modulate plasma markers of inflammation C-reactive protein and IL-6 in subjects with increased risk of CVD⁽⁷⁾. These beneficial responses from human studies are supported by data that demonstrate long-term beneficial effects of anthocyanins from mouse models of obesity and diabetes^(8–12).

There are also a number of studies *in vitro* and *in vivo* that suggest that polyphenols influence carbohydrate digestion and absorption, resulting in improved postprandial glycaemia in the short term. Polyphenols inhibit intestinal α -glucosidase activity^(13–17) and glucose transport^(13,15,18–21) *in vitro*. In association with this, polyphenols administered to rodents suppress the elevation of blood glucose concentration after oral administration of mono- and di-saccharides^(13–17,19,22). In human subjects, several studies have examined the effect of polyphenols on the postprandial glycaemic response⁽²³⁾. In one study, a test meal of mixed berry purée with sucrose showed a lower plasma glucose concentration after 15–30 min compared with a control matched for sugars⁽²⁴⁾.

Overall, evidence suggests that consuming edible berries, particularly from the genus *Vaccinium*, that have high concentrations of anthocyanins could provide a supplementary intervention to improve glycaemia in subjects with T2D or impaired glucose tolerance. The object of the present study was to investigate whether a single supplementation with a standardised (36 % (w/w) anthocyanins) concentrated bilberry extract could alter glucose metabolism in overweight/obese volunteers with impaired glucose intolerance or T2D compared with a control capsule matched for sugars and to explore the possible mechanisms of action.

Methods

Subjects

Male volunteer subjects (n 8; BMI 30 (SD 4) kg/m²; aged 62 (SD 5) years) with T2D controlled by diet and lifestyle alone or with impaired glucose tolerance (Table 1) were recruited from the Aberdeen area of the UK. Subjects were only included if they were not on any special religious or prescribed diet and had a stable weight. Medical exclusion criteria included chronic illnesses, such as thromboembolic or coagulation problems, thyroid disease, renal or hepatic disease, severe gastrointestinal disorders, pulmonary disease (for example, chronic bronchitis, chronic obstructive pulmonary disease), alcohol or any other substance abuse, eating disorders or psychiatric disorders. Volunteers were also excluded if they were taking oral steroids, tricyclic antidepressants, neuroleptics, anticoagulants, digoxin and anti-arrhythmics, or

Table 1. Baseline characteristics of the lean and overweight diabetic study volunteers (n 8)
(Mean values and standard deviations)

	Mean	SD
Age (years)	62.13	4.55
BMI (kg/m ²)	30.32	4.38
Height (cm)	174.35	7.37
Body weight (kg)	92.33	15.05
Body weight:height ratio	0.53	0.08
Waist circumference (cm)	105.9	11.44
Hip circumference (cm)	105.1	5.83
Waist:hip circumference ratio	1.01	0.06
Blood pressure (mmHg)		
Systolic	142.5	15.70
Diastolic	81.1	7.47
Plasma cholesterol (mmol/l)	4.29	0.91
Plasma glucose (mmol/l)	7.16	1.41
Plasma HDL-cholesterol (mmol/l)	1.18	0.39
Plasma LDL-cholesterol (mmol/l)	2.59	0.87
TAG (pmol/l)	1.42	0.51
NEFA (mmol/l)	0.59	0.14
Fasting plasma insulin (pg/ml)	407.70	208.41
HOMA-IR	3.35	2.19
HOMA- β	405	190

HOMA-IR, homeostasis model assessment of insulin resistance; HOMA- β , homeostasis model assessment of β -cell function.

chronically using anti-inflammatories (for example, high doses of aspirin, ibuprofen) or nutrient supplements. These criteria were checked with each participant's primary care physician. All subjects provided informed written consent before inclusion in the study, which was approved by the North of Scotland Research Ethics Committee (NOSREC). The study was registered at clinicaltrials.gov no. NCT01245270 and was conducted according to the guidelines laid down in the Declaration of Helsinki. On both visits, all anthropometric measurements were made following an overnight fast.

Study design

In a cross-over design, volunteers (n 8) were randomised and double-blinded into two groups matched for BMI as well as age and given a single capsule of either 0.47 g of Mirtoselect[®] (a standardised bilberry extract (36 % (w/w) anthocyanins)) which equates to about 50 g of fresh bilberries formulated in gelatin capsules or a control capsule consisting of microcrystalline cellulose in an opaque gelatin capsule, followed by oral glucose tolerance testing (OGTT). The reverse procedure was conducted following a 2-week washout period. The volunteers were asked to consume a low-phytochemical diet 3 d before taking the capsule and for the 24 h after taking the capsule on both occasions. In addition the volunteers were asked to record what they ate over the same period in a food diary to ensure that they adhered to the low-phytochemical diet. Subjects were reimbursed travelling expenses on completion of the study.

Oral glucose tolerance testing

In the evening before the test on each visit the volunteers were asked to consume the same low-phytochemical meal.



Volunteers were fasted (10–12 h) overnight before the OGTT. Venous blood samples were taken through an indwelling cannula inserted into a forearm vein at –15, –10 and –5 (fasted) and at 15, 30, 45, 60, 90, 120, 150 and 300 min after consuming 75 g of Polycal liquid (carbohydrate, 61.9%; polysaccharide, 49.2%; sugars, 12.2%; glucose, 0.6%; maltose, 11.6%; <http://www.nutricia.co.uk>). Polycal was selected as the main carbohydrate as it is in the form of polysaccharides and this is closer to normal dietary consumption than glucose only. It is often used in hospitals as a standard glucose load for OGTT as it is more palatable. The volunteers consumed the appropriate capsule (0 min), glucose load and a further sample of water (70 ml) within 3 min. For those volunteers taking the control capsule, additional sugar (fructose and dextrose/glucose) was added double-blinded to the water to match the free sugar content of the Mirtoselect[®] capsules. Movement during the 300 min OGTT was kept to a minimum. Plasma glucose concentrations were measured in triplicate using an automated clinical analyser (Kone Oyj). Plasma insulin was measured in duplicate using an ELISA assay (Merckodia). The inter- and intra-assay CV were 2.6–3.6 and 2.8–3.4%, respectively. Homeostasis model assessment of insulin resistance (HOMA-IR) was measured using the fasting glucose and insulin values.

Metabolic profile

An automated clinical analyser (Kone Oyj) was used for the analysis of plasma glucose, TAG, LDL, HDL, NEFA and cholesterol using commercial kits (Microgenics GmbH).

Mirtoselect[®]

Mirtoselect[®] is a standardised hydro-alcoholic extract of *Vaccinium myrtillus* L. berries (Mirtoselect[®]; Indena S.p.A.) containing 36% (w/w) of anthocyanins by HPLC. The extract is obtained from frozen ripe fruit of *V. myrtillus* L. harvested when ripe during July to September. Predominant anthocyanin constituents are delphinidin-3-galactoside, delphinidin-3-glucoside, delphinidin-3-arabinoside, cyanidin-3-galactoside and cyanidin-3-glucoside (Indena datasheet). Other anthocyanins include cyanidin-3-arabinoside, petunidin-3-galactoside, petunidin-3-glucoside, petunidin-3-arabinoside, peonidin-3-galactoside, peonidin-3-glucoside, peonidin-3-arabinoside, malvidin-3-galactoside, malvidin-3-glucoside and malvidin-3-arabinoside. Mirtoselect[®] also contains other polyphenols (phenolic acids, flavonols, proanthocyanidins; about 18%), carbohydrates and aliphatic organic alcohols (about 29%), fats (about 0.04%), N compounds (about 1%), ash (about 0.7%), with the remaining 15% undefined. The main sugar composition of the Mirtoselect[®] is fructose, 13%; glucose, 14%; and sucrose, 4% (w/w). No side effects of the Mirtoselect[®] supplementation were noted. Mirtoselect[®] batch no. 29993/M2 was used in the present study.

Plasma ELISA

Plasma was collected in EDTA tubes containing aprotinin with dipeptidyl peptidase-4 (DPP-IV) inhibitor (Millipore

Ltd) added at 10 µl/ml and stored at –70°C until analysis. Plasma glucagon, amylin, monocyte chemoattractant protein-1 (MCP-1), gastric inhibitory polypeptide (GIP) and insulin were detected using the commercial Milliplex multiplex ELISA kit (HMHMAG-34K) according to the manufacturer's instructions (Millipore Ltd). All samples were run in duplicate. The minimum level of detection of glucagon was 6 pg/ml and the intra- and inter-assay CV were 3 and 7%, respectively. The recovery of glucagon added to plasma was approximately 98%. Similar values for all the other analytes can be found on the Millipore website (www.millipore.com/).

Glucagon-like peptide-1 RIA

Glucagon-like peptide-1 (GLP-1) concentrations in plasma were measured by RIA after extraction of plasma with 70% ethanol (v/v, final concentration). Carboxy-terminal GLP-1 immunoreactivity was determined using antiserum 89390 which has an absolute requirement for the intact amidated carboxy-terminus of GLP-1 7–36 amide and cross-reacts less than 0.01% with carboxy-terminally truncated fragments and 89% with GLP-1 9–36 amide, the primary metabolite of DPP-IV-mediated degradation. The sum of the two components (total GLP-1 concentration) reflects the rate of secretion of the L-cell. Sensitivity was below 1 pmol/l, and intra-assay CV below 5%⁽²⁵⁾.

Antioxidant assays

The ferric-reducing activity of plasma (FRAP) assay (Benzie & Strain⁽²⁶⁾) and the Trolox equivalent antioxidant capacity (TEAC) assay (Dragsted *et al.*⁽²⁷⁾) were used to define changes to plasma antioxidant capacity. For the analysis of FRAP in a microplate format, 6 µl of plasma were added with 18 µl of sterile distilled water and 180 µl of freshly prepared FRAP reagent (250 mM-sodium acetate (pH 3.6), 1.6 mM-iron (III) chloride and 0.83 mM-2,4,6-Tris(2-pyridyl)-s-triazine). Samples were incubated at 37°C for 4 min and absorbance ($A_{593\text{nm}}$; Dynex Technologies) recorded after 4 min and after a further 30 min at 37°C. The difference in $A_{593\text{nm}}$ between samples and blanks was calculated and compared with a standard curve of Fe(II) standard solutions (50–1000 µM). For TEAC analysis a proprietary assay (TEAC Assay; Sigma CS0970) was used and conducted according to the manufacturer's recommendations. Briefly, 10 µl of plasma were added to 20 µl of myoglobin solution and 150 µl of ABTS (2,2'-azino-bis(3-ethylbenzothiazoline-6-sulphonic acid)) substrate working solution. Samples were incubated for 5 min at 21°C (as optimised), the reaction stopped and the $A_{405\text{nm}}$ recorded (Dynex Technologies). The antioxidant capacity was reported as Trolox equivalents by referral to the equation obtained from the linear regression of a Trolox standard curve.

Statistical analysis

AUC was calculated using the trapezoid approximation. For the incremental version (AUC_i), only the extent of interpolated values above baseline contributed. Values obtained following



the control and extract capsules were compared by paired *t* tests.

Results

The mean body weight of the volunteers remained stable during the study: 92.3 (SD 15.6) kg on visit 1 compared with 92.3 (SD 15.4) kg on visit 2. The order in which the capsules were taken (control *v.* bilberry extract) did not significantly influence any variable.

Plasma glucose

The ingestion of the bilberry extract lowered the venous plasma glucose AUC_i by 18 % compared with the placebo ($P = 0.003$; Fig. 1). All eight volunteers showed a decrease in plasma glucose AUC_i when taking the bilberry extract compared with the placebo (data not shown). The kinetics of glycaemia was compared for AUC_i for 0–60 min and for 60–300 min but there was no difference between the bilberry extract and the placebo (Fig. 1(b)). However, the incremental plasma

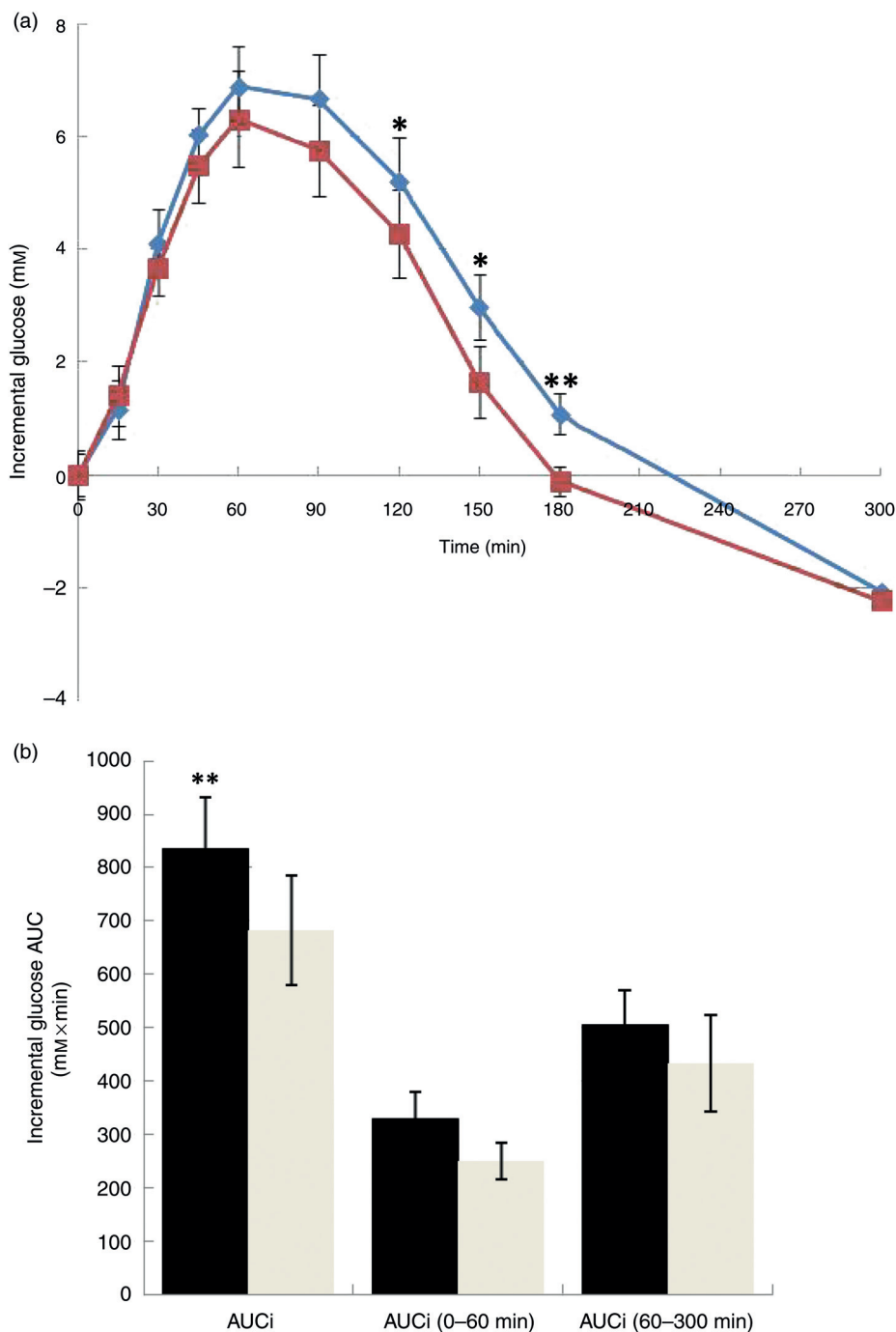


Fig. 1. (a) Plasma incremental glucose concentrations following consumption of a glucose load with either a single placebo control (◆) or bilberry (*Vaccinium myrtillus* L.) extract (■) capsule. (b) Incremental AUC (AUC_i) from 0 to 300 min, 0 to 60 min and 60 to 300 min for plasma glucose concentrations under the control (■) and bilberry extract (◻) conditions. Values are means for eight subjects, with standard errors represented by vertical bars. Mean value was significantly different from that for the bilberry extract: * $P < 0.05$, ** $P < 0.01$.

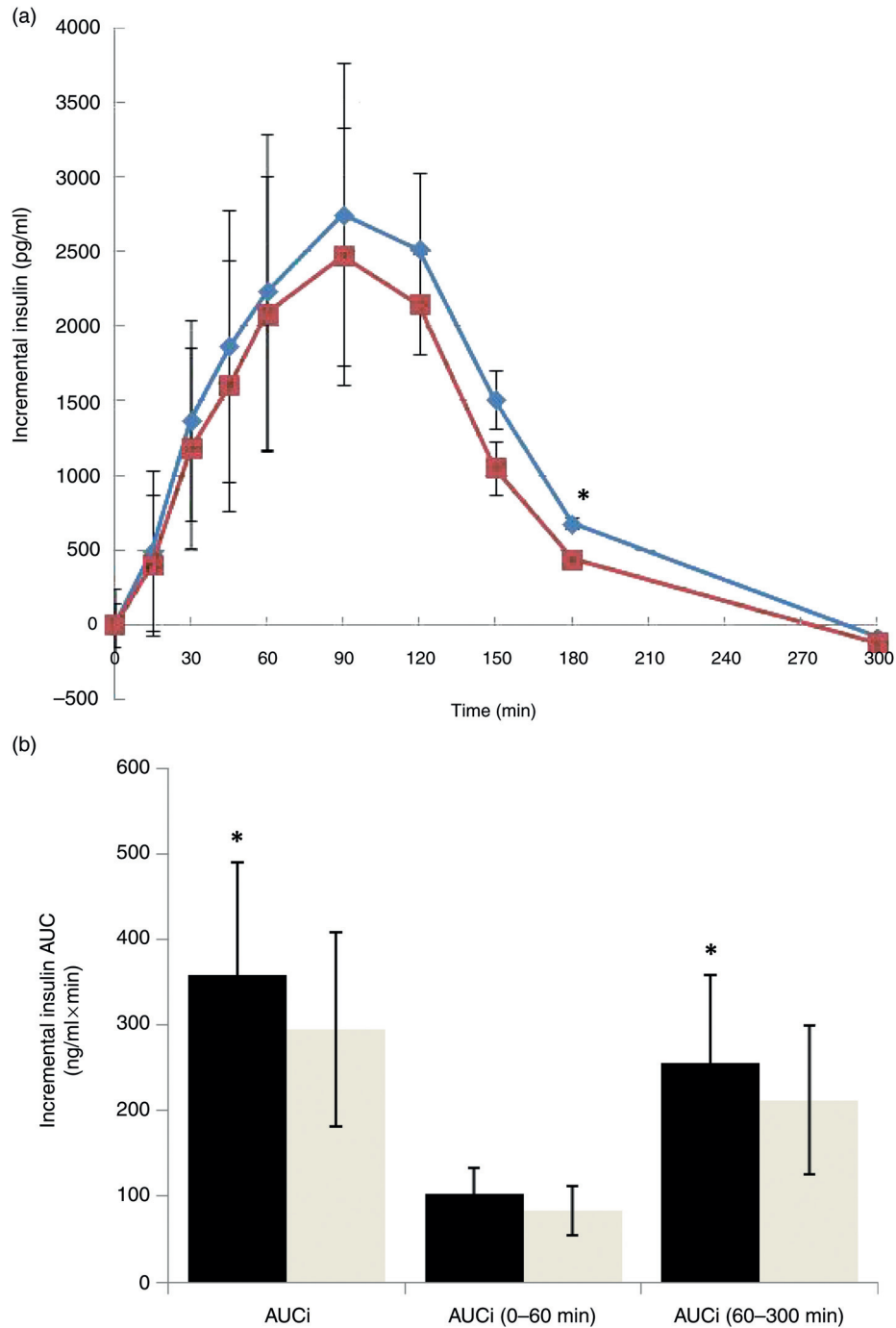


Fig. 2. (a) Plasma incremental insulin concentrations following consumption of a glucose load with either a single placebo control (◆) or bilberry (*Vaccinium myrtillus* L.) extract (■) capsule. (b) Incremental AUC (AUCi) from 0 to 300 min, 0 to 60 min and 60 to 300 min for plasma insulin concentrations under the control (■) and bilberry extract (●) conditions. Values are means for eight subjects, with standard errors represented by vertical bars. * Mean value was significantly different from that for the bilberry extract ($P < 0.05$).

glucose concentrations were significantly lower at 120, 150 and 180 min after taking the bilberry extract compared with the placebo control ($P = 0.04$, 0.02 and 0.004 , respectively; Fig. 1(a)). We also examined the effect of the ingestion of the bilberry extract on the glycaemic profile⁽²⁸⁾, defined as the duration of the incremental postprandial blood glucose response divided by the blood glucose incremental peak, but found no effect when compared with the placebo control (data not shown).

Plasma insulin

The ingestion of the bilberry extract lowered the venous plasma insulin AUCi by 18 % compared with placebo ($P = 0.028$; Fig. 2). All but one volunteer showed a decrease in plasma insulin AUCi when taking the bilberry extract compared with the control (data not shown). There was a 17 % decrease ($P = 0.04$) between the extract and placebo control for the time 60–300 min but not for the early postprandial phase (0–60 min; Fig. 2(b)). The incremental plasma insulin



concentration was also lower at 180 min after taking the bilberry extract compared with placebo ($P=0.04$; Fig. 2).

Incretin response

The impact of the bilberry extract and the placebo ingestion on the gut incretin hormones, plasma GIP and GLP-1, secreted from the intestinal mucosa, as well as glucagon and amylin secreted from the pancreas was compared at all time points. There was no difference in treatment for the AUCi for any of these hormones or for any of the individual time points compared with placebo (Fig. 3).

Inflammatory and oxidative response

The bilberry extract had no effect on the plasma concentrations of the inflammatory adipokine MCP-1 (Fig. 4(a)) compared with the placebo control at any of the time points studied. Similarly there was no effect of the bilberry extract on the oxidative state measured by plasma FRAP (Fig. 4(b)) and TEAC (Fig. 4(c)), compared with placebo.

Discussion

The present study shows that the ingestion of a capsule containing concentrated bilberry extract gives a reduced

postprandial glycaemic response in volunteers with T2D controlled by diet and lifestyle alone compared with an inert placebo capsule. Given that the glucose concentrations between the volunteers taking the bilberry and control extract are different during the later time points (120, 150 and 180 min) it might be suggested that the active ingredient takes some time before it has an effect, perhaps due to digestion or where it is having its effect, for example, time to reach the gastrointestinal tract. This differs from previous studies in normal/healthy volunteers where the decrease in the plasma glucose between the volunteers taking the berries and control extract occurs at the earlier time points^(23,29,30). This may be due to differences in glucose metabolism in volunteers with T2D or differences between the studies, for example, the ingestion of a capsule may take longer to reach the gastrointestinal tract compared with a berry purée. The bilberry extract also decreased plasma insulin compared with the control in a profile that mirrors the postprandial glycaemic response. One explanation is that the decreased plasma insulin is a result of the lower plasma glucose or the volunteers become more insulin sensitive.

One study in normal/healthy volunteers that reported a mean decrease in plasma glucose after 15 and 30 min following the consumption of a commercial apple juice also observed parallel changes in the plasma concentrations of the incretins, GLP-1 and GIP⁽²⁹⁾. Both these incretins are produced in the

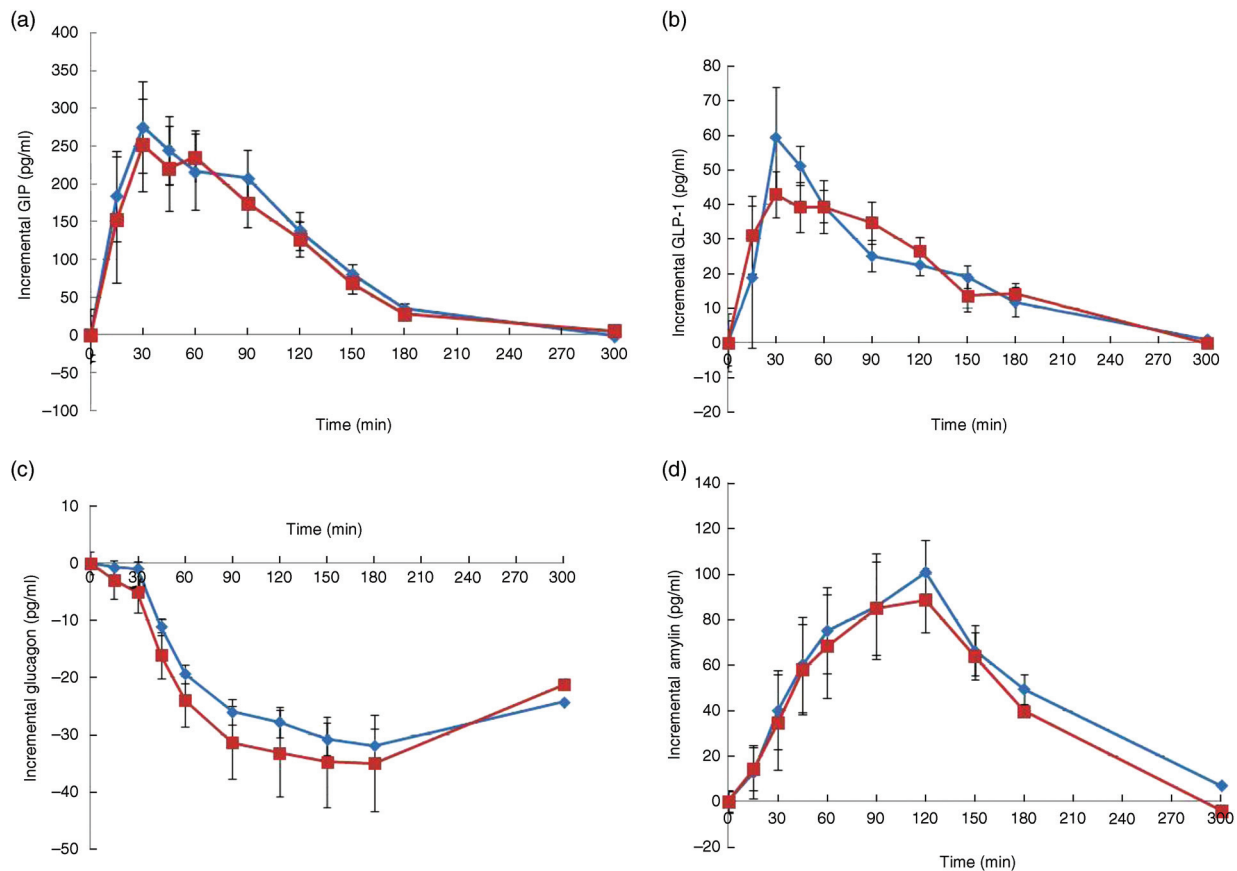


Fig. 3. Plasma incremental concentrations of (a) gastric inhibitory polypeptide (GIP), (b) glucagon-like peptide-1 (GLP-1), (c) glucagon and (d) amylin from 0 to 300 min following consumption of a glucose load with either a single placebo control (◆) or bilberry (*Vaccinium myrtillus* L.) extract (■) capsule. Values are means for eight subjects, with standard errors represented by vertical bars.

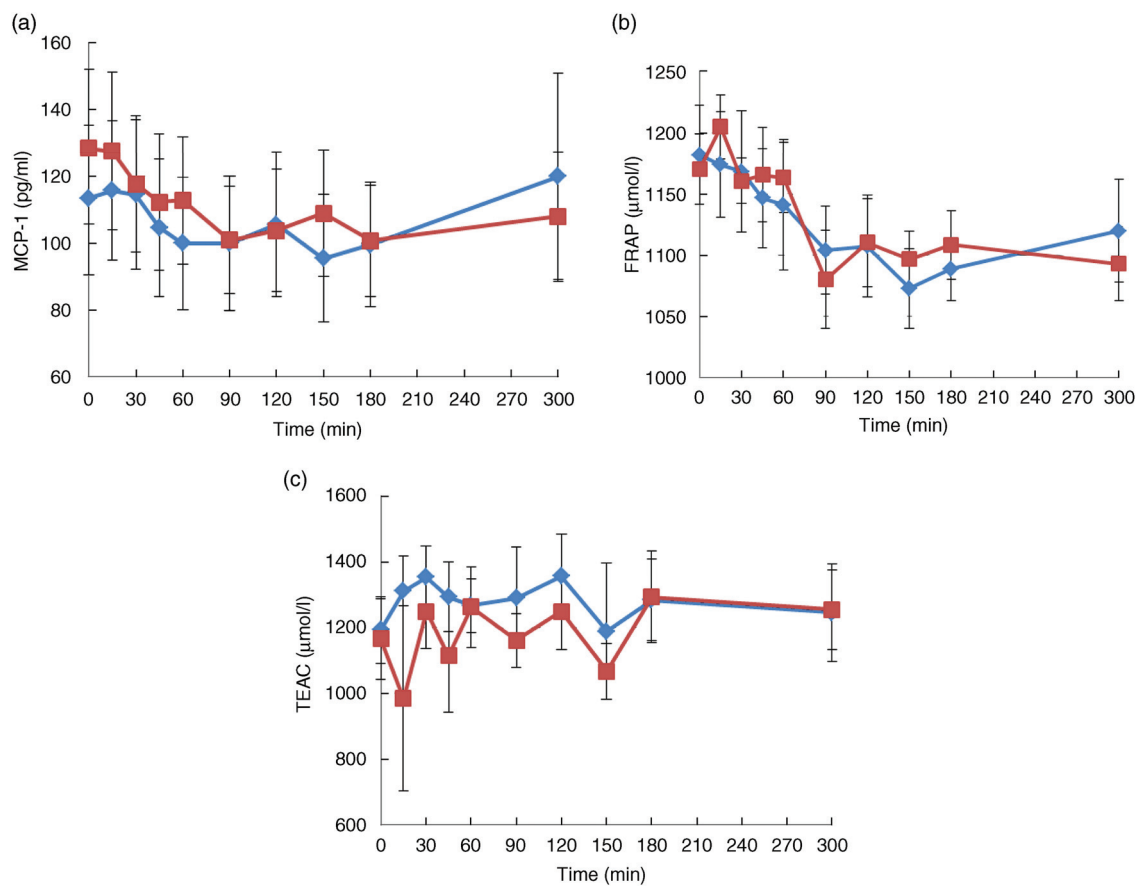


Fig. 4. Plasma concentrations for (a) monocyte chemoattractant protein-1 (MCP-1), (b) ferric-reducing ability of plasma (FRAP) and (c) Trolox equivalent antioxidant capacity (TEAC) from 0 to 300 min following consumption of a glucose load with either a single placebo control (◆) or bilberry (*Vaccinium myrtillus* L.) extract (■) capsule. Values are means for eight subjects, with standard errors represented by vertical bars.

intestinal mucosa and are normally secreted when food is eaten in order to reduce glycaemic excursion by causing an increase in insulin secretion. However, GLP-1 also has other effects such as inhibiting glucagon secretion from the pancreas and by decreasing the time it takes for food to empty from the stomach. In the present study we did not find an effect of the bilberry extract on GIP, GLP-1 or glucagon. Further, we also looked at the effect of the bilberry extract on the pancreatic hormone amylin which also affects plasma glucose concentration independent of insulin secretion. Again, we did not observe any effects of the bilberry extract on plasma amylin compared with the placebo.

Bilberries are rich in anthocyanins, recognised for their ability to provide and activate cellular antioxidant protection, inhibit inflammatory gene expression, and consequently protect against oxidant-induced and inflammatory cell damage and cytotoxicity^(2–4). In light of this we investigated the effects of a bilberry extract on the inflammatory marker MCP-1 that plays a role in the recruitment of monocytes due to the low-grade inflammation associated with obesity⁽³¹⁾. However, in the present study we did not see any changes in plasma levels of MCP-1 due to the ingestion of the bilberry extract compared with the control. Similarly, we could not detect any alterations in plasma TEAC or FRAP, both markers of oxidation. It may well be that any effects of the bilberry extract on markers of inflammation and oxidation take longer than

5 h to occur. In addition, our sample size of eight volunteers was modest, and meant that we had 80 % power to detect treatment effects about 1.5 times the natural within-individual variability (SD) in outcome measurements. Therefore any negative results reported need to be viewed in this context.

It has been suggested that berry polyphenols inhibit α -glucosidase, the enzyme responsible for the digestion of sucrose to glucose in the intestinal epithelium. Two anthocyanins (cyanidin-3-rutinoside⁽³²⁾ and cyanidin-3-galactoside^(33,34)) have been shown *in vitro* to be inhibitors of α -glucosidase. Cyanidin-3-galactoside is present in bilberries⁽³⁵⁾ and cranberries⁽²⁴⁾, and has shown a synergistic effect with acarbose⁽³⁴⁾. Acarbose is used as an inhibitor of α -glucosidase in the treatment of diabetes. Also proanthocyanidins have shown potent α -glucosidase inhibitory activity^(36,37). The anthocyanins in the bilberry extract are well documented^(38,39) and include both cyanidin-3-galactoside and proanthocyanidins. As the glucose load Polycal used here for the OGTT is composed of complex carbohydrates, the reduced postprandial glycaemia in response to the ingestion of the bilberry extract may be due in part to a reduction in the breakdown of carbohydrates.

In addition there is evidence that polyphenols can affect the absorption of glucose across the intestine. This is thought to be mediated by active Na-dependent transport via Na glucose co-transporter 1 (SGLT1) and facilitated Na-independent transport via GLUT2⁽⁴⁰⁾. The Na⁺-dependent SGLT1-mediated



glucose uptake appears to be inhibited by several phenolic acids (for example, chlorogenic, ferulic and caffeic acids)⁽¹³⁾ as well as by glucosides of quercetin⁽²⁰⁾. The glucose transport by GLUT2 was inhibited by the flavonols quercetin and myricetin^(19,21). These phenolic acids and flavonols with inhibitory activity against intestinal glucose uptake are common polyphenolic constituents of berries^(41–43). Thus, both a reduced breakdown of carbohydrates and lowered intestinal absorption may contribute to the improved glycaemic excursion. Further studies are needed to determine which of these mechanisms are more important *in vivo*. For example, comparison of the bilberry extract responses to Polycal *v.* a glucose OGTT would resolve how important to the breakdown of carbohydrates is in the action of the bilberry extract. Although dietary fibre has been shown to affect postprandial glucose⁽⁴⁴⁾, the bilberry extract used only contains 18 mg of dietary fibre (15 mg in soluble form). This small quantity is unlikely to explain the reduced glycaemic response. Future studies would also focus on dose–response effects to support the observed changes in postprandial glucose in volunteers with and without T2D.

In addition to berries, other foods rich in polyphenols have been implicated in modifying glycaemic response. Various studies on the effect of coffee have suggested that the chlorogenic acid in coffee might have an antagonistic effect on the transport of sucrose⁽⁴⁵⁾ and attenuate the glycaemic response to sucrose⁽⁴⁶⁾. However, as far as we know, none of these studies has shown a change in the AUC_i values for glucose or insulin in response to the polyphenols compared with the control.

In conclusion, to our knowledge this is the first report showing that ingestion of a concentrated bilberry extract at amounts that can be easily tolerated produces a reduced AUC_i postprandial glycaemia and insulinaemia in volunteers with T2D. The probable mechanism(s) for the reduced glycaemic response are reduced rates of carbohydrate digestion and/or absorption. The use of berry polyphenols as phytochemicals capable of lowering the glycaemia response to carbohydrates not only in subjects with diabetes but also in those with impaired glucose tolerance control may prove to be useful in helping control blood sugar. Such a strategy could complement the effectiveness of other lifestyle interventions such as avoidance of overweight and the need to take regular exercise.

Acknowledgements

We are grateful to the Scottish Government Rural and Environment Science and Analytical Services (RESAS) for funding. We thank staff in The Human Nutrition Unit at the University of Aberdeen, Rowett Institute of Nutrition and Health for their assistance with the study, and Indena S. p.A. for supplying the Mirtoselect[®] bilberry extract.

N. H. contributed to the study design, data collection and analysis. M. C. and K.-M. M. contributed to the study design and data collection. J. J. H. and C. B. contributed to the data collection. G. H. contributed to the statistical analysis of the data. N. H., C. B., J. J. H., W. R. and G. H. all contributed to the writing of the manuscript.

None of the authors had any conflicts of interest.

References

- Ceriello A & Testa R (2009) Antioxidant anti-inflammatory treatment in type 2 diabetes. *Diabetes Care* **32**, Suppl. 2, S232–S236.
- Zafra-Stone S, Yasmin T, Bagchi M, *et al.* (2007) Berry anthocyanins as novel antioxidants in human health and disease prevention. *Mol Nutr Food Res* **51**, 675–683.
- Tsuda T (2008) Regulation of adipocyte function by anthocyanins; possibility of preventing the metabolic syndrome. *J Agric Food Chem* **56**, 642–646.
- Neto CC (2007) Cranberry and blueberry: evidence for protective effects against cancer and vascular diseases. *Mol Nutr Food Res* **51**, 652–664.
- Basu A, Du M, Leyva MJ, *et al.* (2010) Blueberries decrease cardiovascular risk factors in obese men and women with metabolic syndrome. *J Nutr* **140**, 1582–1587.
- Stull AJ, Cash KC, Johnson WD, *et al.* (2010) Bioactives in blueberries improve insulin sensitivity in obese, insulin-resistant men and women. *J Nutr* **140**, 1764–1768.
- Karlsen A, Paur I, Bøhn SK, *et al.* (2010) Bilberry juice modulates plasma concentration of NF- κ B related inflammatory markers in subjects at increased risk of CVD. *Eur J Nutr* **49**, 345–355.
- Prior RL, Wilkes SE, Rogers TR, *et al.* (2010) Purified blueberry anthocyanins and blueberry juice alter development of obesity in mice fed an obesogenic high-fat diet. *J Agric Food Chem* **58**, 3970–3976.
- DeFuria J, Bennett G, Strissel KJ, *et al.* (2009) Dietary blueberry attenuates whole-body insulin resistance in high fat-fed mice by reducing adipocyte death and its inflammatory sequelae. *J Nutr* **139**, 1510–1516.
- Prior RL, Wu X, Gu L, *et al.* (2008) Whole berries *versus* berry anthocyanins: interactions with dietary fat levels in the C57BL/6J mouse model of obesity. *J Agric Food Chem* **56**, 647–653.
- Guo H, Li D, Ling W, *et al.* (2011) Anthocyanin inhibits high glucose-induced hepatic mtGPAT1 activation and prevents fatty acid synthesis through PKC ζ . *J Lipid Res* **52**, 908–922.
- Jayaprakasam B, Olson LK, Schutzi RE, *et al.* (2006) Amelioration of obesity and glucose intolerance in high-fat-fed C57BL/6 mice by anthocyanins and ursolic acid in Cornelian cherry (*Cornus mas*). *J Agric Food Chem* **54**, 243–248.
- Welsch CA, Lachance PA & Wasserman BP (1989) Dietary phenolic compounds: inhibition of Na⁺-dependent D-glucose uptake in rat intestinal brush border membrane vesicles. *J Nutr* **119**, 1698–1704.
- Matsui T, Tanaka T, Tamura S, *et al.* (2007) α -Glucosidase inhibitory profile of catechins and theaflavins. *J Agric Food Chem* **55**, 99–105.
- Hanamura T (2006) Antihyperglycemic effect of polyphenols from acerola (*Malpighia emarginata* DC.) fruit. *Biosci Biotechnol Biochem* **70**, 1813–1820.
- Hanamura T, Hagiwara T & Kawagishi H (2005) Structural and functional characterization of polyphenols isolated from acerola (*Malpighia emarginata* DC.) fruit. *Biosci Biotechnol Biochem* **69**, 280–286.
- Iwai K, Kim M, Onodera A, *et al.* (2006) α -Glucosidase inhibitory and antihyperglycemic effects of polyphenols in the fruit of *Viburnum dilatatum* Thunb. *J Agric Food Chem* **54**, 4588–4592.
- Kobayashi Y, Suzuki M, Satsu H, *et al.* (2000) Green tea polyphenols inhibit the sodium-dependent glucose transporter of intestinal epithelial cells by a competitive mechanism. *J Agric Food Chem* **48**, 5618–5623.
- Song J, Kwon O, Chen S, *et al.* (2002) Flavonoid inhibition of sodium-dependent vitamin C transporter 1 (SVCT1) and glucose transporter isoform 2 (GLUT2), intestinal transporters for vitamin C and glucose. *J Biol Chem* **277**, 15252–15260.
- Cermak R, Landgraf S & Wolfram S (2004) Quercetin glucosides inhibit glucose uptake into brush-border-membrane vesicles of porcine jejunum. *Br J Nutr* **91**, 849–855.
- Johnston K, Sharp P, Clifford M, *et al.* (2005) Dietary polyphenols decrease glucose uptake by human intestinal Caco-2 cells. *FEBS Lett* **579**, 1653–1657.



22. Matsui T, Ebuchi S, Kobayashi M, *et al.* (2002) Anti-hyperglycemic effect of diacylated anthocyanin derived from *Ipomoea batatas* cultivar Ayamurasaki can be achieved through the α -glucosidase inhibitory action. *J Agric Food Chem* **50**, 7244–7248.
23. Törrönen R, Sarkkinen E, Tapola N, *et al.* (2010) Berries modify the postprandial plasma glucose response to sucrose in healthy subjects. *Br J Nutr* **103**, 1094–1097.
24. Wilson T, Singh AP, Vorsa N, *et al.* (2008) Human glycemic response and phenolic content of unsweetened cranberry juice. *J Med Food* **11**, 46–54.
25. Orskov C, Rabenhoj L, Wettergren A, *et al.* (1994) Tissue and plasma concentrations of amidated and glycine-extended glucagon-like peptide I in humans. *Diabetes* **43**, 535–539.
26. Benzie IF & Strain JJ (1996) The ferric reducing ability of plasma (FRAP) as a measure of “antioxidant power”: the FRAP assay. *Anal Biochem* **239**, 70–76.
27. Dragsted LO, Pedersen A, Hermetter A, *et al.* (2004) The 6-a-day study: effects of fruit and vegetables on markers of oxidative stress and antioxidative defense in healthy nonsmokers. *Am J Clin Nutr* **79**, 1060–1072.
28. Törrönen R, Kolehmainen M, Sarkkinen E, *et al.* (2012) Postprandial glucose, insulin, and free fatty acid responses to sucrose consumed with blackcurrants and lingonberries in healthy women. *Am J Clin Nutr* **96**, 527–533.
29. Johnston KL, Clifford MN & Morgan LM (2002) Possible role for apple juice phenolic compounds in the acute modification of glucose tolerance and gastrointestinal hormone secretion in humans. *J Sci Food Agric* **82**, 1800–1805.
30. Törrönen R, Sarkkinen E, Niskanen T, *et al.* (2012) Postprandial glucose, insulin and glucagon-like peptide 1 responses to sucrose ingested with berries in healthy subjects. *Br J Nutr* **107**, 1445–1451.
31. Panee J (2012) Monocyte chemoattractant protein 1 (MCP-1) in obesity and diabetes. *Cytokine* **60**, 1–12.
32. Adisakwattana S, Ngamrojanavanich N, Kalampakorn K, *et al.* (2004) Inhibitory activity of cyanidin-3-rutinoside on α -glucosidase. *J Enzyme Inhib Med Chem* **19**, 313–316.
33. Akkarachiyasit S, Yibchok-Anun S, Wacharasindhu S, *et al.* (2011) *In vitro* inhibitory effects of cyanidin-3-rutinoside on pancreatic α -amylase and its combined effect with acarbose. *Molecules* **16**, 2075–2083.
34. Adisakwattana S, Charoenlertkul P & Yibchok-Anun S (2009) α -Glucosidase inhibitory activity of cyanidin-3-galactoside and synergistic effect with acarbose. *J Enzyme Inhib Med Chem* **24**, 65–69.
35. Buchert J, Koponen JM, Suutarinen M, *et al.* (2005) Effect of enzyme-aided pressing on anthocyanin yield and profiles in bilberry and blackcurrant juices. *J Sci Food Agric* **85**, 2548–2556.
36. Schäfer A & Högger P (2007) Oligomeric procyanidins of French maritime pine bark extract (Pycnogenol[®]) effectively inhibit α -glucosidase. *Diabetes Res Clin Pract* **77**, 41–46.
37. Kumar S, Narwal S, Kumar V, *et al.* (2011) α -Glucosidase inhibitors from plants: a natural approach to treat diabetes. *Pharmacogn Rev* **5**, 19–29.
38. Cai H, Thomasset SC, Berry DP, *et al.* (2011) Determination of anthocyanins in the urine of patients with colorectal liver metastases after administration of bilberry extract. *Biomed Chromatogr* **25**, 660–663.
39. Cooke DN, Thomasset S, Boocock DJ, *et al.* (2006) Development of analyses by high-performance liquid chromatography and liquid chromatography/tandem mass spectrometry of bilberry (*Vaccinium myrtillus*) anthocyanins in human plasma and urine. *J Agric Food Chem* **54**, 7009–7013.
40. Levin RJ (1994) Digestion and absorption of carbohydrates – from molecules and membranes to humans. *Am J Clin Nutr* **59**, Suppl. 3, 690S–698S.
41. Määttä-Riihinen KR, Kamal-Eldin A, Mattila PH, *et al.* (2004) Distribution and contents of phenolic compounds in eighteen Scandinavian berry species. *J Agric Food Chem* **52**, 4477–4486.
42. Määttä-Riihinen KR, Kamal-Eldin A & Törrönen AR (2004) Identification and quantification of phenolic compounds in berries of *Fragaria* and *Rubus* species (family Rosaceae). *J Agric Food Chem* **52**, 6178–6187.
43. Mattila P, Hellström J & Törrönen R (2006) Phenolic acids in berries, fruits, and beverages. *J Agric Food Chem* **54**, 7193–7199.
44. Wood PJ (2007) Cereal β -glucans in diet and health. *J Cereal Sci* **46**, 230–238.
45. Thom E (2007) The effect of chlorogenic acid enriched coffee on glucose absorption in healthy volunteers and its effect on body mass when used long-term in overweight and obese people. *J Int Med Res* **35**, 900–908.
46. Johnston KL, Clifford MN & Morgan LM (2003) Coffee acutely modifies gastrointestinal hormone secretion and glucose tolerance in humans: glycemic effects of chlorogenic acid and caffeine. *Am J Clin Nutr* **78**, 728–733.